

JONESBORO POLICE DEPARTMENT

Monthly Report September 2012

Office of Crime Analysis & Criminal Intelligence
410 W Washington Ave
Jonesboro, AR 72401
Basia Combs, Crime Analyst

IN THIS REPORT

CRIME ANALYSIS	1
Total Crime	2
Crimes against Person	3
Property Crimes	4
Crimes of Proactive Policing	5
Other Crimes.....	6
EMERGENCY 911	9
UPD	10
PROWL	10
CID	11
WARRANTS	12
DRUG TASK FORCE	13
TRAFFIC	14
Maps	15
PARKING ENFORCEMENT	16
ANIMAL CONTROL	17
FLEET MAINTENANCE	17
RECORDS	18
PROFESSIONAL STANDARDS	19

The purpose of the Jonesboro Police Department Monthly Report is to compile data into one integrated report for review, allowing for a seamless flow of information for better decision-making. After each department collates their monthly numbers and sends it to the Office of Crime Analysis, it is organized into sections of departmental data, analyzed and packaged, and finally disseminated to department heads, the Chief of Police, the City Mayor, and the City Council. Major sections include Crime Analysis, Emergency 911, Uniform Police Division, Prowl, Criminal Investigative Division, Warrants, Drug Task Force, Traffic, Parking Enforcement, Animal Control, Fleet Maintenance, Records, and Professional Standards.

CRIME ANALYSIS

The Crime Analysis division consists of one Crime Analyst and one part-time Crime Analyst Assistant. The Crime Analyst position is responsible for the analysis and dissemination of crime activity data and the collection and maintenance of crime intelligence information for the city of Jonesboro. Additionally, the Crime Analyst is charged with providing the department with current and accurate crime maps, presenting crime activity data to audiences of interest, and responding to requests for crime data from civilians and departmental staff. Data exported from this division is used by field agents for more effective, efficient policing, administration for improved staffing decisions, and the Mayor's office for community decision making and enhanced public relations. The following section is broken down into Total Crime, Crimes against Persons, Property Crimes, Crimes of Proactive Policing, Other Crimes, Arrest Demographics, Total Crime Monthly Comparison, and Next Month Predictions.

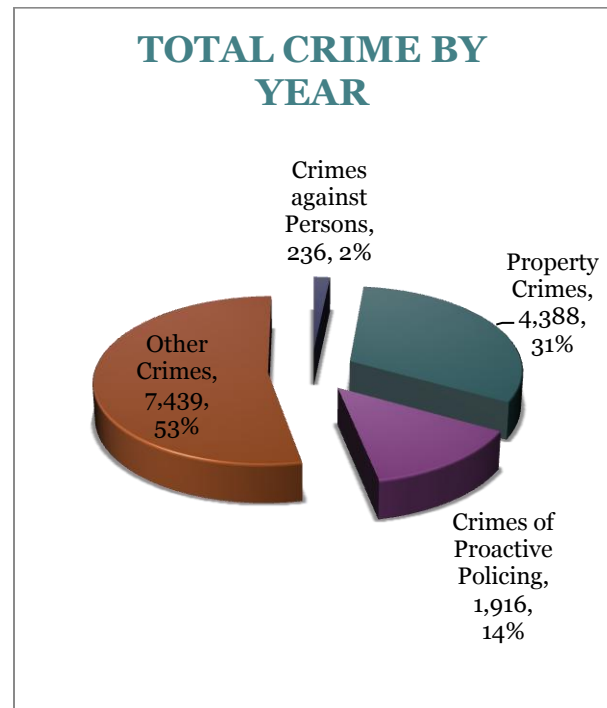
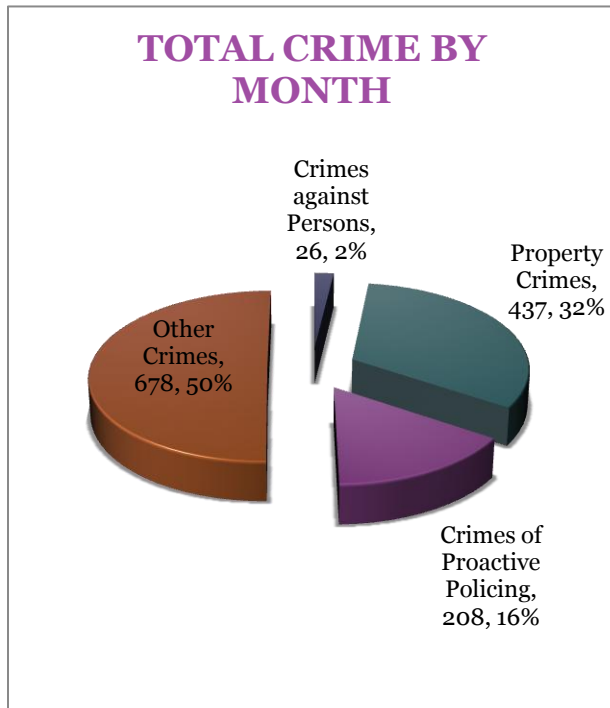
MONTHLY REPORT September 2012

October 5, 2012

TOTAL CRIME

The crime activity for the month of September 2012 was at a total of 1,349 NIBRIS reportable offenses, a 20% decrease, comparing to a total of offenses in September last year. With Jonesboro population equal to 67,351, the crime rate was at 20 crimes per 1,000 population for the month of September this year, comparing to 26 crimes per 1,000 population last year¹, a 20% decrease. As indicated on a pie chart below, Other Crimes absorb the majority, 50%, of this month's crime activity ($n = 678$). Property Crimes absorb the majority, 50%, of this month's crime activity ($n = 678$). Property crimes fall into a second place and comprise of 32% of all the crimes ($n = 437$). Following in third and fourth places are crimes of proactive policing at 16% ($n = 208$) and crimes against persons at 2% ($n = 26$).

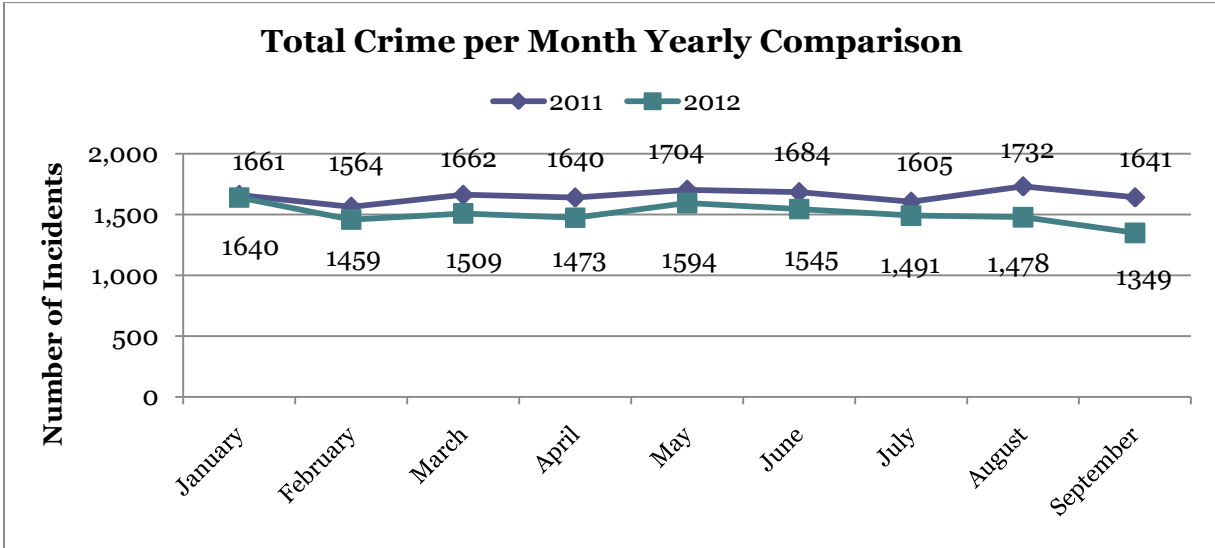
Year to date data includes number of crimes from January through September 2012. A total of 13,979 NIBRIS reportable offenses were reported in 2012, a 9% decrease, comparing to the same period last year. The year to date crime rate amounts to 208 offenses per 1,000 population, compared to 230 offenses per 1,000 population last year (down 10%). A 53% of all the crimes is attributed to Other Crimes category ($n = 7,439$). Property Crimes comprise of 31% of all the crimes to date, where $n = 4,388$. Crimes of Proactive Policing amount to 14% ($n = 1,916$) and crimes against persons comprise of 2% of a total year to date number of crimes ($n = 236$).



¹ Note: 2011 numbers are based on 2011 population estimate, $n = 67,263$.

MONTHLY REPORT September 2012

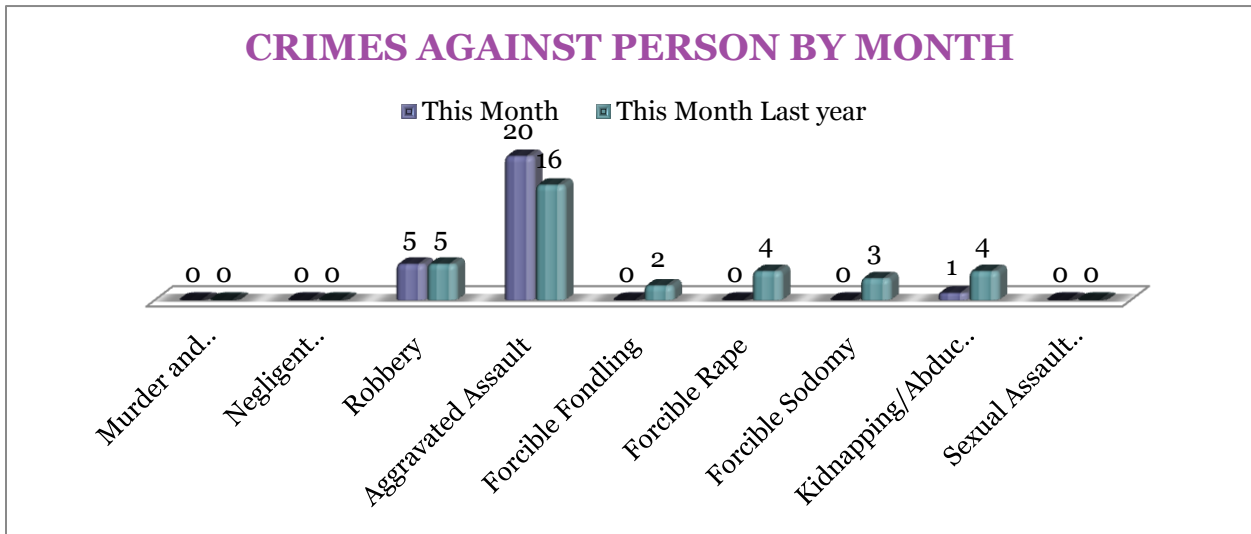
October 5, 2012



CRIMES AGAINST PERSONS

There are 9 crimes that make up this section. There were a total of 37 offenses in this area this month, a 24% decrease, comparing to the last year's total in September. Aggravated Assaults are up

25% this month. Sexual Assaults decreased 100% each. As demonstrated on the bar chart below, there are no significant changes in other crimes for this category.

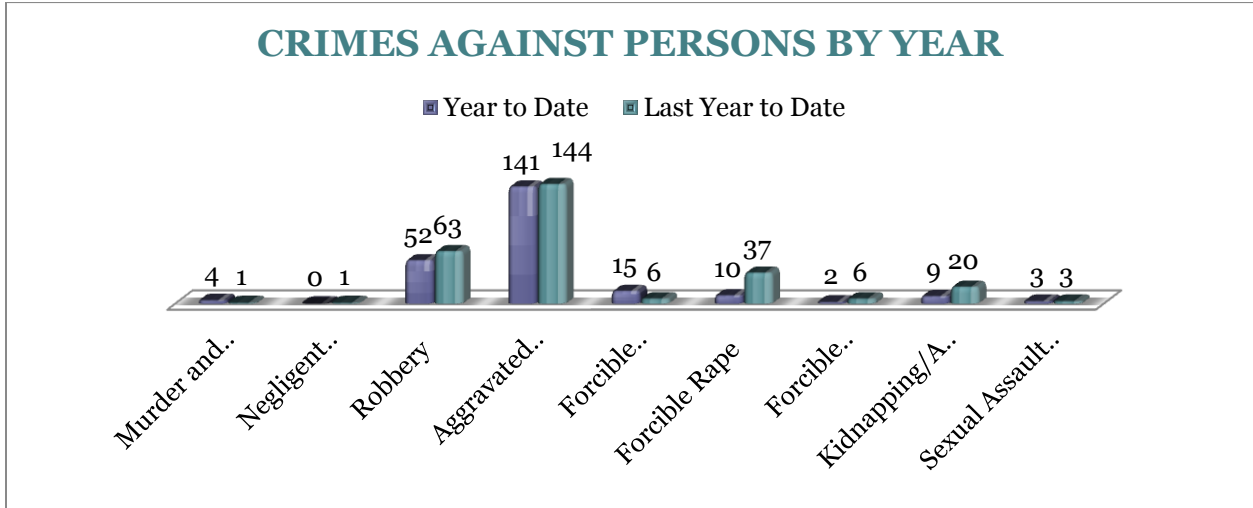


A bar graph on the following page shows the year to date data for Crimes against Persons, which amounts to a total of 236 incidents for this category of crimes, a 16% decrease, comparing to the year to date

data of last year. Forcible Foundlings are up by 9 offences. Robberies are down 17%, and forcible rapes are down 73%. To date we have 3 more murders than last year to date.

MONTHLY REPORT September 2012

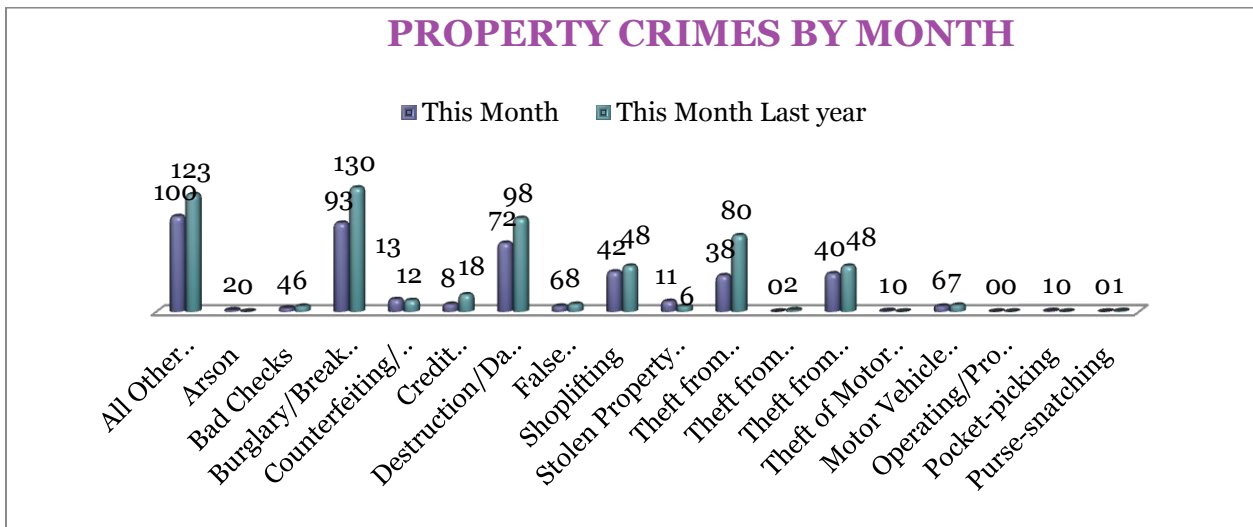
October 5, 2012



PROPERTY CRIMES

This section displays the criminal activity for 18 crimes, all against property. This month, there were a total of 437 Property Crimes, a 26% decrease comparing to September of last year. The data indicates a significant change in All Other Larceny

(down 19%), Burglary/Breaking & Entering (down 28%), Destruction / Damage / Vandalism (down 27%), and Theft from Building (down 53%). Stolen Properties offenses have increased by 5 offences.

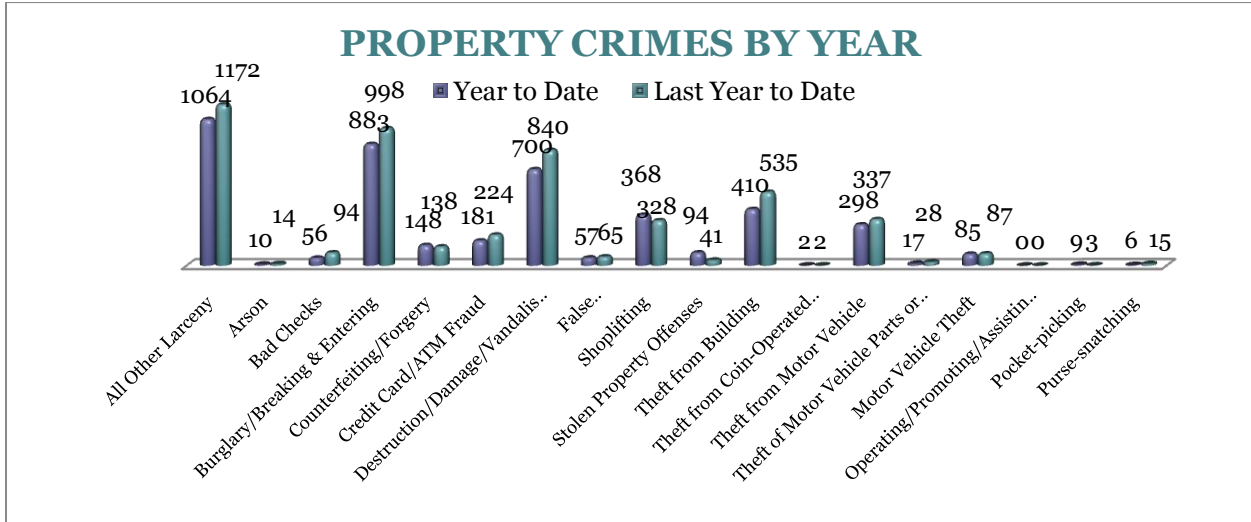


To date this year, 4,388 property offenses have occurred, an 11% decrease, comparing to the last year's data at this same time. The following significant changes are noted this year: All Other Larceny (down 9%), Bad Checks (down

40%), Burglary/Breaking or Entering (down 12%), Destruction/Damage/Vandalism (down 17%), and Theft from Building (down 23%) while Stolen Property Offenses increased by 129% and Shoplifting increased by 12%.

MONTHLY REPORT September 2012

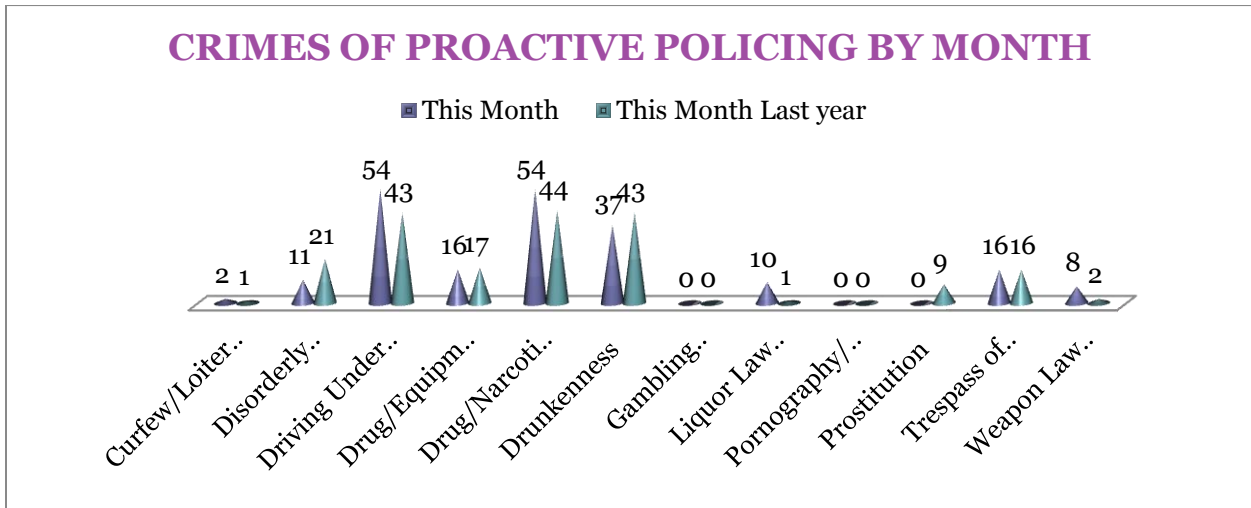
October 5, 2012



CRIMES OF PROACTIVE POLICING

Crimes of Proactive Policing are those crimes that result from police officers actively policing the streets to combat certain types of street crime. As a chart below indicates, twelve crimes fall under this category. A total of 208 offenses have occurred this month, a 6% increase,

comparing to September last year. There is a significant increase in Driving Under the Influence (up 26%), Drug/Narcotic Violations are up 23%, and there were 9 more Liquor Law Violations (comparing to 1 last year), and 6 more Weapon Law Violations (comparing to 2 last year).



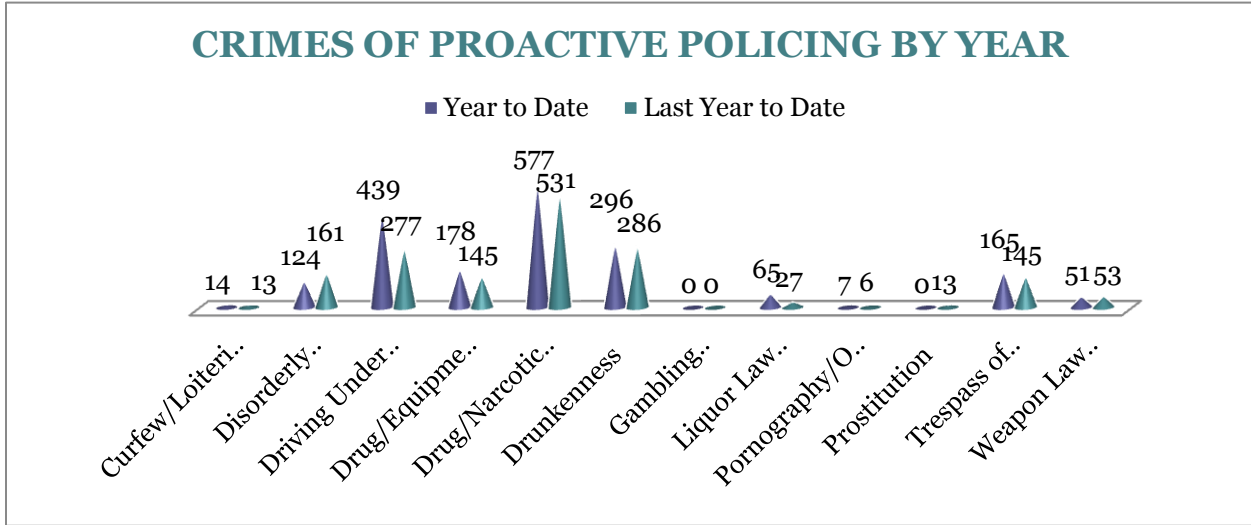
To date for the year 2012, there have been 1,916 crimes of proactive policing reported, a 16% increase, comparing to the last year's to date data. Driving Under the Influence is up 58%, Drug/Narcotic Violations are up 9%, Trespass of Real

Property are up 14%, and Liquor Law Violations increased by 141% this year. Disorderly Conduct is down 23% and Weapon Law Violations decreased by 4% this year. Prostitution is down 100%. There

MONTHLY REPORT September 2012

October 5, 2012

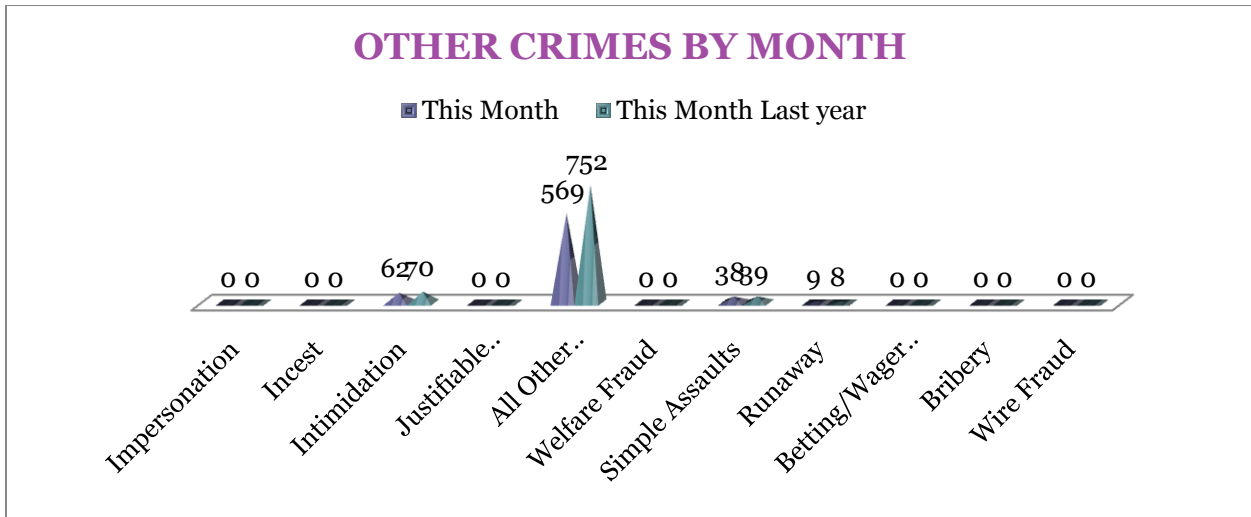
are no statistically significant changes noted for other offenses in this category.



OTHER CRIMES

There are 11 crimes that fall into the Other Crimes category. This month, there have been a total of 678 Other Crimes, a 22% decrease, comparing to last September (n = 869). Intimidation is down 11% and

Simple Assaults are down 3%. Also all other offences are down 24%. No other significant changes are noted in this category of crimes this month.

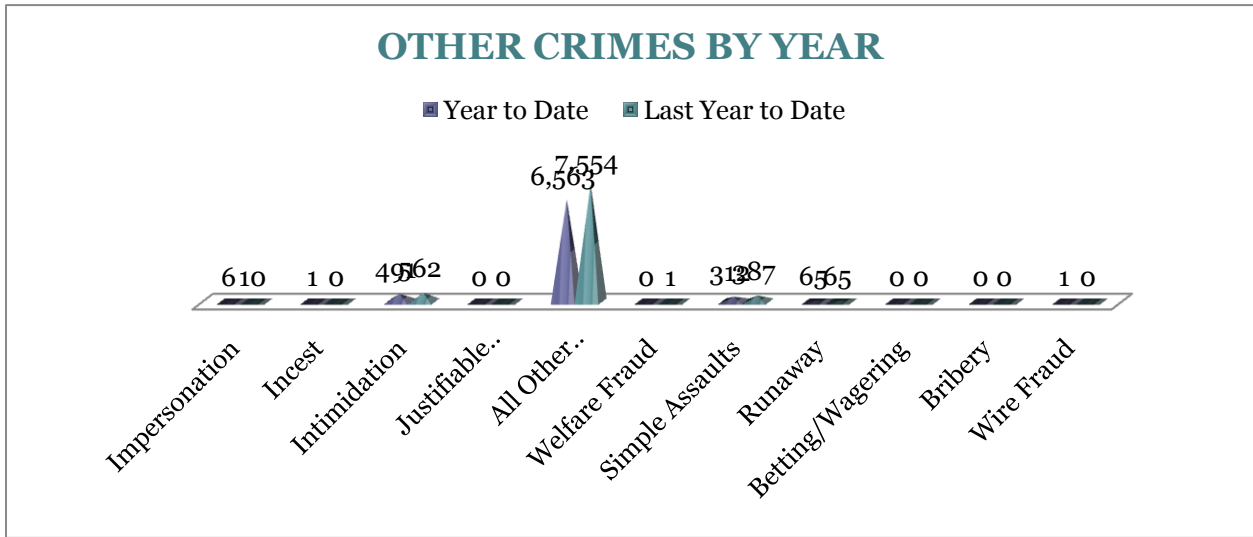


To date this year, there have been 7,439 Other Crimes offenses, a 13% decrease comparing to the last year's to date data. Simple Assaults decreased by 19%. Impersonations are down 4 offences and Welfare Fraud is down 10 Offences. All

Other Offenses decreased by 13%. No statistically significant changes have been observed for other offenses within this category, comparing to the last year's data.

MONTHLY REPORT September 2012

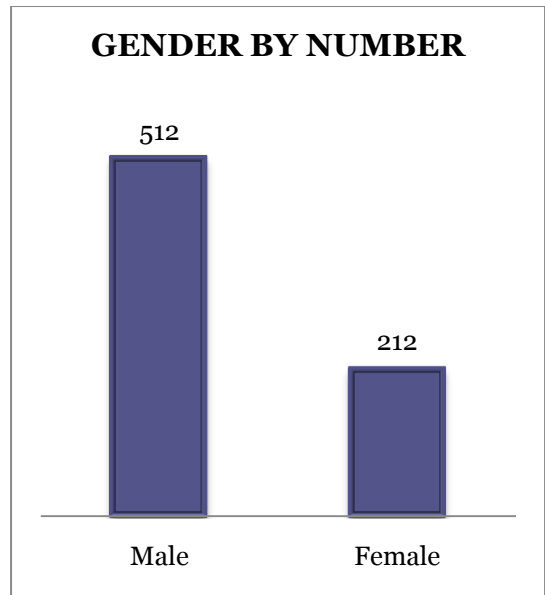
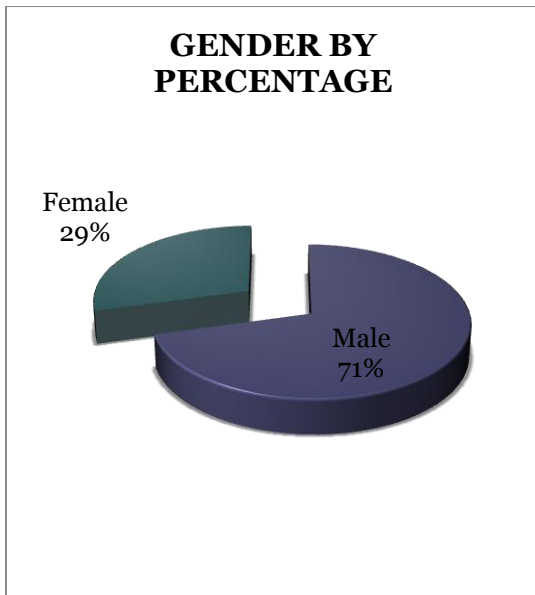
October 5, 2012



ARREST DEMOGRAPHICS

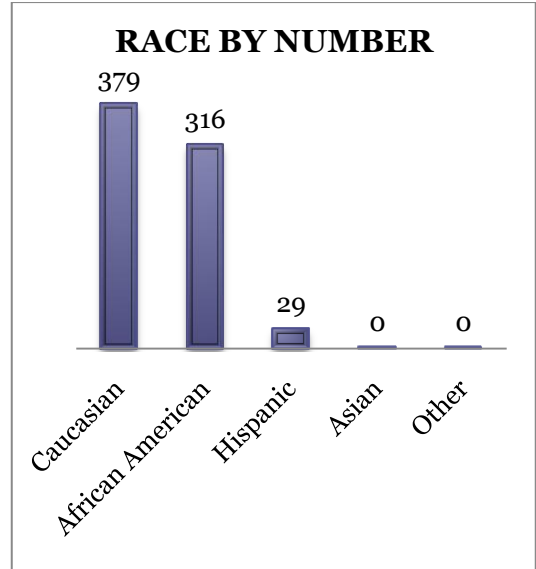
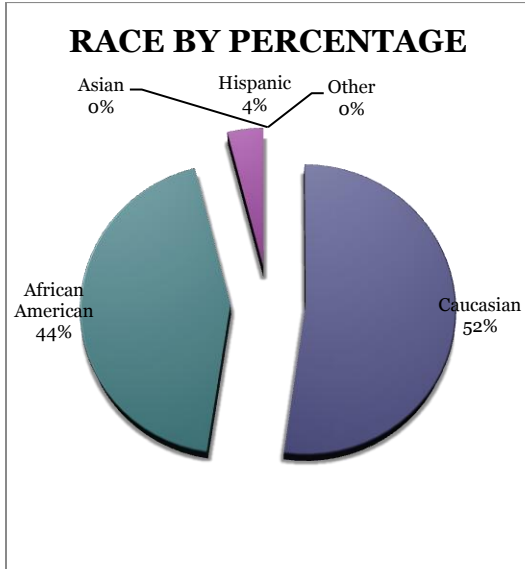
In September, there were a total of 724 arrests. Comparing with the last year's data for the month of September, there was a 16% decrease in arrests; that is 54 arrests per 100 crimes in September of this year, comparing to 51 arrests per 100 crimes last year, a 5.4% increase for arrests per 100 crimes. This section breaks down

this month's arrests by race and gender. The majority of offenders have been male ($n = 512$), as opposed to female ($n = 212$) and Caucasian ($n = 379$) and African American ($n = 316$) as opposed to Hispanic ($n = 29$), Asian ($n = 0$), or other/unknown/bi-racial ($n = 0$).



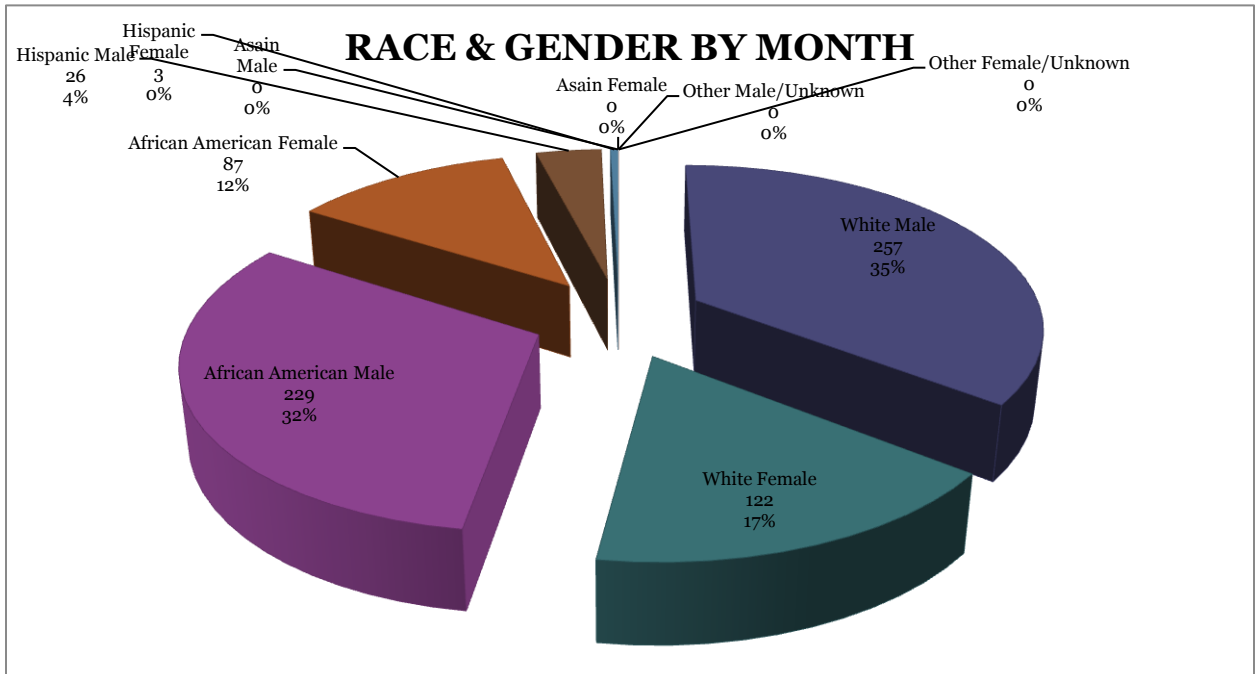
MONTHLY REPORT September 2012

October 5, 2012



Caucasian males make up the majority, 35%, of arrestees this month ($n = 257$). African American males make up 32% of arrestees for the month of September ($n = 229$). Caucasian females make up 17% ($n =$

122) and African American females make up 12% ($n = 87$). Hispanic males make up 4% ($n = 26$), and Hispanic Females make up 0% ($n = 3$) of arrestees.



MONTHLY REPORT September 2012

October 5, 2012

EMERGENCY 911

Also known as Public Safety Answering Point (PSAP), the Emergency 911 Division is responsible for answering all calls from public for emergency assistance, accessing the needed information to best assist, and then assigning the most efficient and effective emergency response. In addition,

this division is responsible for setting priority call dispatching to field units including Police, Fire, and EMS. Emergency 911 also maintains all records for radio logs, calls for service, and other emergency service data collections.

Calls by Type	This Month	This Month Last Year	YTD	Last YTD	Change By Month	Change YTD
Land Line E911	772	855	7,074	7,379	-10%	-4%
Cell Phone E911	4,421	3,815	38,041	34,410	16%	11%
Admin Lines-non emer	15,823	15,316	152,714	143,467	3%	6%
TOTALS	21,016	19,986	197,829	185,256	5%	7%

Calls by Agency	This Month	This Month Last Year	YTD	Last YTD	Change By Month	Change YTD
Jonesboro PD Calls	6,940	7,011	62,727	61,421	-1%	2%
Craighead Cty Sheriff	1,167	1,133	11,475	11,103	3%	3%
Jonesboro Fire Dpt - dispatch	203	186	1,964	1,656	9%	19%
Jonesboro Fire Dpt - Med Asst	121	82	1,074	997	48%	8%
Craighead Cty - Fire	57	48	629	477	19%	32%
Craighead Cty - 1st Responder	115	99	991	803	16%	23%
Emerson Ambulance	286	229	2,725	2,219	25%	23%
Medic One	316	306	2,610	2,689	3%	-3%
Air Evac	0	1	7	8	-100%	-13%
Coroner	0	2	29	22	-100%	32%
ARK State Police	0	16	113	129	-100%	-12%
Jonesboro Animal Control	0	2	18	153	-100%	-88%
Wreckers Called	170	162	1,523	1,389	5%	10%
TOTALS	9,375	9,277	85,885	83,066	1%	3%

Calls by Municipality	This Month	This Month Last Year	YTD	Last YTD	Change By Month	Change YTD
Bay PD	133	116	1074	998	15%	8%
Bono PD	293	208	2452	1749	41%	40%
Brookland PD	168	169	1516	1304	-1%	16%
Caraway PD	106	103	1237	781	3%	58%
Cash PD	31	11	282	840	182%	-66%
Egypt PD	0	11	65	104	-100%	-38%
Lake City PD	95	148	1302	951	-36%	37%
Monette PD	135	189	1318	1324	-29%	0%
TOTALS	961	955	9,246	8,051	1%	15%

MONTHLY REPORT September 2012

October 5, 2012

UNIFORM PATROL DIVISION

The UPD is responsible for responding to calls into the Emergency - 911 Division by civilians and are normally the first responders. Jonesboro is divided into 6 patrol districts. Officers from UPD are assigned to a district and work the same

district every shift. In addition, when a Traffic Officer is not available, a UPD Officer will respond to traffic accidents and assist in directing traffic when necessary

Incidents	This Month	This Month Last Year	YTD	Last YTD	Change By Month	Change YTD
Calls for Service	6,942	7,020	63,359	60,050	-1%	6%
Complaints / Calls	4,112	4,064	36,452	37,159	1%	-2%
Assists	1,499	919	11,035	10,671	63%	3%
Incident Reports	887	916	7,700	8,778	-3%	-12%
Street Accidents	90	66	705	730	36%	-3%
Private Property Accidents	36	50	361	402	-28%	-10%
Traffic Stops	1,904	1,807	18,200	18,383	5%	-1%
Traffic Citations	603	603	5,842	6,201	0%	-6%
Written Warnings	938	764	7800	6,327	23%	23%
DWI	45	34	365	218	32%	67%
Mis. Arrests	430	458	4,136	4,501	-6%	-8%
Felony Arrests	87	80	833	828	9%	1%
Warrants Served	1,194	1,549	11,930	13,386	-23%	-11%
Alarms	378	350	3,113	3,014		
TOTALS	19,145	18,680	171,831	170,648	2%	1%
Hours Worked	9,202	8,815	80,442	88,771	4%	-9%

PROWL

The Prowl unit is a uniformed street crimes unit specializing in criminal patrol, narcotics enforcement, gang investigation, and prostitution activity. The unit conducts directed patrols, investigates citizen

complaints of street-level criminal activity, and directly assists the 2nd Judicial Drug Task Force. PROWL also assists any division within the Jonesboro Police Department at any time when needed.

MONTHLY REPORT September 2012

October 5, 2012

Incidents	This Month	This Month Last Year	YTD	Last YTD	Change By Month	Change YTD
Street Accidents	0	0	0	0	N/C	N/C
Private Property Accidents	0	0	1	0	N/C	N/C
Traffic Citations	33	17	300	275	94%	9%
DWI	0	1	1	1	-100%	0%
Mis. Arrests	125	44	1,712	864	184%	98%
Felony Arrests	38	5	268	234	660%	15%
Drug Arrests	29	1	254	235	2800%	8%
Public Intoxication Arrests	0	2	1	2	-100%	-50%
Calls For Service	93	81	920	777	15%	18%
Alarms	0	0	0	0	N/C	N/C
Parking Citations	0	0	0	0	N/C	N/C
Written Warnings	49	68	518	429	-28%	21%
Assists	0	0	0	0	N/C	N/C
TOTALS	367	219	3,975	2,817	68%	41%
Value of Drugs Seized	\$51,500	\$100	\$192,835	\$52,550	51400%	267%
Value of Asstes Seized	200	0	33,818	51,930	N/C	-35%
Patrol Miles	6,550	5,350	55,750	46,720	22%	19%

CRIMINAL INVESTIGATIVE DIVISION

The CID is responsible for conducting follow-up investigations into criminal acts reported to the Jonesboro Police Department. The primary goal is to collect and present evidence that conclusively

leads to a successful arrest. Additionally, CID is charged with clearing additional crimes, recovering stolen property, preventing additional crimes, and gathering intelligence information.

Investigations	This Month	This Month Last Year	YTD	Last YTD	Change By Month	Change YTD
Criminal Investigations Assigned	48	71	617	811	-32%	-24%
Criminal Investigations Closed	46	43	464	631	7%	-26%
Cleared by Arrests	31	24	328	441	29%	-26%
Unfounded	6	3	48	57	100%	-16%
Exceptionally Cleared	3	5	37	79	-40%	-53%
Filed With Prosecutors Office	3	1	38	28	200%	36%
TOTALS	137	147	1532	2047	-7%	-25%

Crimes Against Persons	This Month	This Month Last Year	YTD	Last YTD	Change By Month	Change YTD
Criminal Investigations Assigned	14	25	159	196	-44%	-19%
Criminal Investigations Closed	17	19	159	173	-11%	-8%
Cleared by Arrests	14	13	123	125	8%	-2%
Unfounded	1	2	11	14	-50%	-21%
Exceptionally Cleared	0	3	9	27	-100%	-67%
Filed With Prosecutors Office	2	1	16	11	100%	45%
TOTALS	48	63	477	546	-24%	-13%

MONTHLY REPORT September 2012

October 5, 2012

Property Crimes	This Month	This Month Last Year	YTD	Last YTD	Change By Month	Change YTD
Criminal Investigations Assigned	31	39	422	563	-21%	-25%
Criminal Investigations Closed	24	14	268	392	71%	-32%
Cleared by Arrests	17	11	204	306	55%	-33%
Unfounded	3	1	30	36	200%	-17%
Exceptionally Cleared	3	2	27	58	50%	-53%
Filed With Prosecutors Office	1	0	14	10	N/C	40%
TOTALS	79	67	965	1365	18%	-29%

Crimes Against Children	This Month	This Month Last Year	YTD	Last YTD	Change By Month	Change YTD
Criminal Investigations Assigned	1	3	15	24	-67%	-38%
Criminal Investigations Closed	1	0	24	31	N/C	-23%
Cleared by Arrests	0	0	10	10	N/C	0%
Unfounded	1	0	7	14	N/C	-50%
Exceptionally Cleared	0	0	1	1	N/C	0%
Filed With Prosecutors Office	0	0	9	7	N/C	29%
TOTALS	3	3	66	87	0%	-24%

Miscellaneous Investigations Assigned	1	3	8	7	N/C	14%
Miscellaneous Investigations Cleared	4	4	19	21	N/C	-10%

WARRANTS

The Warrants Division is responsible for serving warrants, criminal summonses, and subpoenas that are issued by the District Court. On city court days, the Warrants Division provides a bailiff for court and a transport officer. In addition, this Division

is responsible for transporting wanted persons arrested in other jurisdictions back to Jonesboro. The STEP program operates within this division and is a grant-funded operation in which officers can get paid overtime to enforce the safety belt law.

Arrests	This Month	This Month Last Year	YTD	Last YTD	Change By Month	Change YTD
Misdemeanor	1711	1083	10233	10315	58%	-1%
Felony	2	2	4	8	0%	-50%
Total Arrests	1713	1085	10237	10323	58%	-1%

Warrants by Activity	This Month	This Month Last Year	YTD	Last YTD	Change By Month	Change YTD
Subpoenas	1139	522	4299	3381	118%	27%
Commitments	1	1	21	18	0%	17%
Traffic Citations	2	2	19	19	0%	0%
Complaints	4	4	12	6	0%	100%
Assist	0	0	1	0	N/C	N/C
Alarms	0	0	0	0	N/C	N/C

Hours by Activity	This Month	This Month Last Year	YTD	Last YTD	Change By Month	Change YTD
SI Criminal	488	261.5	2169.5	2127	87%	2%
Court	206	115	1172.67	1071.33	79%	9%
Prisoner Transport	35.5	22.5	268.5	148	58%	81%

MONTHLY REPORT September 2012

October 5, 2012

Hours Worked	This Month	This Month Last Year	YTD	Last YTD	Change By Month	Change YTD
Regular Hours Worked	1167	645	7664	5681.5	81%	35%
Overtime Hours Worked	5	2	57	79.5	150%	-28%
TOTAL Hours Worked	1172	647	7721	5761	81%	34%

Mileage	This Month	This Month Last Year	YTD	Last YTD	Change By Month	Change YTD
Total Mileage	4825	2525	21507	21212	91%	1%

STEP	This Month	This Month Last Year	YTD	Last YTD	Change By Month	Change YTD
DWI Arrest	1	0	8	5	N/C	60%
DUI Arrest	0	0	0	0	N/C	N/C
Traffic Citations	62	184	1671	1505	-66%	11%
Felony Arrests	0	0	6	4	N/C	50%
Drug Arrests	0	0	1	1	N/C	0%
STEP TOTALS	63	184	1686	1515	-66%	11%
STEP Hours Worked	44	137	1086.5	819.5	-68%	33%
STEP Miles Driven	268	865	5600.5	6627	-69%	-15%

DRUG TASK FORCE

The DTF is responsible for investigating major drug traffickers in the area, including all types of illegal drugs. They

work closely with local, state, and federal agencies to eradicate drugs from the community.

INVESTIGATIONS	This Month	This Month Last Year	YTD	Last YTD	Change By Month	Change YTD
Opened	20	22	220	219	-9%	0%
Closed	13	21	167	215	-38%	-22%
TOTAL	33	43	387	434	-23%	-11%

With Nexus to Jonesboro	This Month	This Month Last Year	YTD	Last YTD	Change By Month	Change YTD
Opened	20	22	203	225	-9%	-10%
Closed	0	0	0	0	N/C	N/C
TOTAL	20	22	203	225	-9%	-10%

Outside Jonesboro (No Known Nexus)	This Month	This Month Last Year	YTD	Last YTD	Change By Month	Change YTD
Opened	0	0	11	13	N/C	-15%
Closed	0	0	0	0	N/C	N/C
TOTAL	0	0	11	13	N/C	-15%

ASSISTANCE RENDERED	This Month	This Month Last Year	YTD	Last YTD	Change By Month	Change YTD
Assist to Outside Agencies	6	1	64	14	500%	357%
Assist to Jonesboro UPD/CID	7	2	100	101	250%	-1%

MONTHLY REPORT September 2012

October 5, 2012

ARRESTS	This Month	This Month Last Year	YTD	Last YTD	Change By Month	Change YTD
Miscellaneous	4	8	56	68	-50%	-18%
Felony	48	41	255	256	17%	0%
Marijuana	5	10	34	70	-50%	-51%
Cocaine	0	4	13	15	-100%	-13%
Crack Cocaine	2	3	22	20	-33%	10%
Methamphetamine/ICE	5	9	63	86	-44%	-27%
LSD	0	0	0	0	N/C	N/C
Ecstasy (MDMA or Other Designer Drug)	0	0	0	0	N/C	N/C
Prescription	2	2	21	20	0%	5%
Opiates (Heroine, Opium)	0	0	1	1	N/C	0%
Labs	2	0	7	16	N/C	-56%
All Other Drug Offenses	4	0	32	0	N/C	N/C

ASSET FORFEITURE	This Month	This Month Last Year	YTD	Last YTD	Change By Month	Change YTD
Vehicles Seized (No.)	3	0	4	2	N/C	100%
Value of Assets Seized(Includes Value of vehicles)	\$61,138	\$14,744	\$110,316	\$63,229	315%	74%
Asset Value Awarded to Jonesboro PD (State)	\$0	\$0	\$0	\$0	N/C	N/C
Asset Value Awarded to Jonesboro PD (Federal)	\$0	\$0	\$0	\$0	N/C	N/C
Asset Value Awarded to Jonesboro PD (Total)	\$0	\$0	\$0	\$0	N/C	N/C

ARRESTS DEMOGRAPHICS	This Month	This Month Last Year	YTD	Last YTD	Change By Month	Change YTD
White	22	24	106	154	-8%	-31%
African American	3	6	66	80	-50%	-18%
Latino	31	0	47	7	N/C	571%
Asian	0	1	0	1	-100%	-100%
Other/Bi-Racial	0	0	0	0	N/C	N/C
Male	37	21	150	180	76%	-17%
Female	9	10	57	59	-10%	-3%
White Male	16	14	64	100	14%	-36%
White Female	7	10	40	50	-30%	-20%
African American Male	3	6	53	71	-50%	-25%
African American Female	0	0	12	7	N/C	71%
Latino Male	20	0	33	7	N/C	371%
Latino Female	2	0	3	0	N/C	N/C
Asian Male	0	0	0	0	N/C	N/C
Asian Female	0	0	0	0	N/C	N/C
Other/Bi-Racial Male	0	0	0	0	N/C	N/C
Other/Bi-Racial Female	0	0	0	0	N/C	N/C

TRAFFIC

Comprised of three motor units and three Chargers, the Traffic Enforcement Unit responds to traffic accidents and provides increased enforcement in particularly challenging areas. This unit also provides

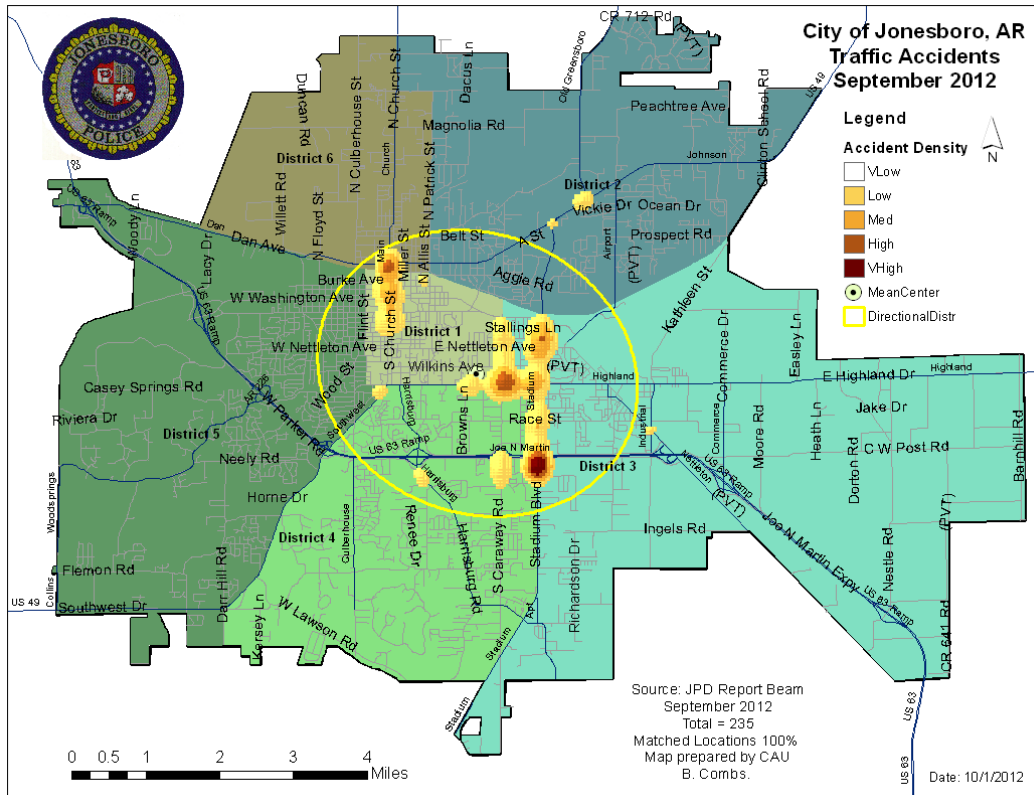
extra coverage for specific congestion problems and special events in the community. Last, they work details targeting specific issues, such as DWI enforcement and traffic safety checkpoints.

MONTHLY REPORT September 2012

October 5, 2012

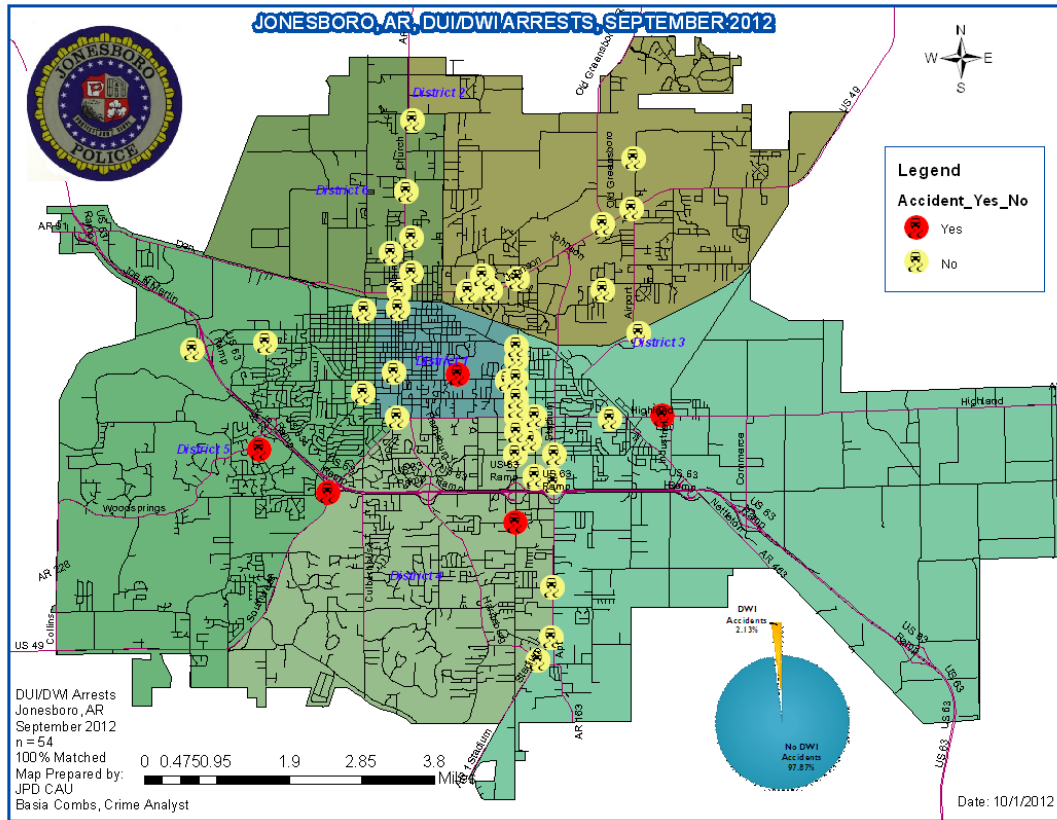
Incidents	This Month	This Month Last Year	YTD	Last YTD	Change By Month	Change YTD
Street Accidents	159	148	1231	1146	7%	7%
Private Property Accidents	39	33	334	359	18%	-7%
Traffic Citations	142	245	1214	1699	-42%	-29%
DWI	1	3	25	33	-67%	-24%
Mis. Arrests	19	8	127	150	138%	-15%
Felony Arrests	0	0	2	14	N/C	-86%
Drug Arrests	0	0	0	0	N/C	N/C
Public Intoxication Arrests	0	1	0	2	-100%	-100%
Calls For Service	293	286	2243	2475	2%	-9%
Alarms	0	0	0	11	N/C	-100%
Parking Citations	0	0	0	0	N/C	N/C
Written Warnings	143	28	1004	718	411%	40%
TOTALS	796	752	6180	6607	6%	-6%

Value of Asstes Seized	\$0	\$0	\$0	\$0	N/C	N/C
Patrol Miles	6,246	4,990	53,452	43,147	25%	24%
Hours Worked	863	828	7587.5	6996	4%	8%



MONTHLY REPORT September 2012

October 5, 2012



PARKING ENFORCEMENT

The Parking Enforcement Division is responsible for enforcing parking laws in the downtown area. This service provides a

safe and convenient parking situation for the public.

CITATIONS ISSUED	This Month	This Month Last Year	YTD	Last YTD	Change By Month	Change YTD
Citations	32	25	256	288	28%	-11%
Verbal Warnings	14	17	127	64	N/C	N/C

MINUTES BY ACTIVITY	This Month	This Month Last Year	YTD	Last YTD	Change By Month	Change YTD
Office	960	465	2,405	5,015	106%	-52%
Admin(Non-Office)	0	465	2,515	6,075	-100%	-59%
Community	0	0	0	0	N/C	N/C
Training	0	0	0	115	N/C	-100%
Patrol	5,160	5,760	40,865	50,070	-10%	-18%

ANIMAL CONTROL

The Animal Control Division is responsible for educating the public on safe and humane issues regarding animal treatment, enforcing all animal laws and ordinances, assisting the public in resolving animal

issues, and protecting the safety and welfare of the citizens and animals in this community.

MONTHLY REPORT September 2012

October 5, 2012

Incidents	This Month 04/12	This Month Last Year	YTD 2012	Last YTD 2011	Change By Month	Change YTD
Barking Complaints	7	7	65	100	0%	-35%
Bite Reports	5	4	69	91	25%	-24%
Door Hangers	38	25	653	273	52%	139%
Welfare Checks	42	91	729	888	-54%	-18%
Advised of Rights	1,069	858	7,902	5,342	25%	48%
Incident Reports	2	9	46	45	-78%	2%
Gone on Arrival	98	30	551	254	227%	117%
Complaints	713	644	6,825	5,126	11%	33%
Desk Complaints	1,643	1,207	13,370	12,770	36%	5%
Captured Dogs	111	112	1,170	1,106	-1%	6%
Captured Cats	18	76	100	264	-76%	-62%
Captured Wildlife	16	54	308	232	-70%	33%
Chemical Captures	4	1	28	23	300%	22%
Traps	22	35	347	119	-37%	192%
Deceased Animals	41	34	694	490	21%	42%
Assist J.P.D.	3	3	55	72	0%	-24%
Assist C.S.O.	0	0	3	10	N/C	-70%
Public Relations	444	911	4,893	6,447	-51%	-24%
CITATIONS ISSUED	29	85	413	905	-66%	-54%
WARNINGS ISSUED	31	34	399	503	-9%	-21%

Incidents	This Month 04/12	This Month Last Year	YTD 2012	Last YTD 2011	Change By Month	Change YTD
Physical Arrests	0	5	10	38	-100%	-74%
City Warrants Served	0	11	39	204	-100%	-81%
County Warrants Served	0	23	14	75	-100%	-81%
Felony Bench Warrants	0	2	2	6	-100%	-67%
Euthanized	73	96	661	627	-24%	5%
Deceased Animals Landfill lbs.	3,480	2,720	30,036	29,140	28%	3%
Wildlife Euthanized	14	54	296	232	-74%	28%
Sent to Rescue Centers	5	1	59	20	400%	195%
Adoptions	36	39	409	333	-8%	23%
Miles Driven	6,298	7,939	64,168	58,348	-21%	10%

FLEET MAINTNANCE

The Fleet Maintenance is responsible for all of the police vehicle maintenance upkeep, cleanliness, and purchasing. In addition,

this Division handles most of the purchasing of equipment, supplies, and uniforms for all of the Police Department.

MONTHLY REPORT September 2012

October 5, 2012

Repair Costs by Model Year	This Month	This Month Last Year	YTD	Last YTD	Change By Month	Change YTD
95-99	\$0.00	\$0.00	\$0.00	\$0.00	N/C	N/C
2000	\$0.00	\$0.00	\$115.09	\$292.92	N/C	-61%
2001	\$0.00	\$0.00	\$300.46	\$213.02	N/C	41%
2002	\$0.00	\$0.00	\$0.00	\$405.65	N/C	-100%
2003	\$0.00	\$0.00	\$0.00	\$0.00	N/C	N/C
2004	\$0.00	\$0.00	\$1,822.92	\$1,531.66	N/C	19%
2005	\$0.00	\$2,071.86	\$1,000.39	\$9,411.25	-100%	-89%
2006	\$6,586.89	\$2,208.14	\$34,780.18	\$28,175.77	198%	23%
2007	\$650.40	\$1,305.90	\$10,285.72	\$13,379.46	-50%	-23%
2008	\$986.10	\$133.85	\$4,545.04	\$1,812.03	637%	151%
2009	\$433.37	\$296.54	\$2,326.26	\$946.57	N/C	N/C
2010	\$479.68	\$0.00	\$992.18	\$433.45	N/C	N/C
2011	\$11.61	\$11.61	\$1,155.41	\$69.66	N/C	N/C
2012	\$0.00	n/a	\$0.00	n/a	N/C	N/C
Totals	\$9,148.05	\$6,027.90	\$57,323.65	\$56,671.44	52%	1%

Routine Preventative Maintenance by Model Year	This Month	This Month Last Year	YTD	Last YTD	Change By Month	Change YTD
95-99	\$0.00	\$0.00	\$72.00	\$78.00	N/C	-8%
2000	\$0.00	\$0.00	\$20.00	\$40.00	N/C	-50%
2001	\$0.00	\$20.00	\$0.00	\$88.00	-100%	-100%
2002	\$0.00	\$0.00	\$100.46	\$50.30	N/C	100%
2003	\$0.00	\$0.00	\$276.50	\$98.00	N/C	182%
2004	\$20.00	\$455.29	\$335.45	\$1,940.80	-96%	-83%
2005	\$0.00	\$181.35	\$1,105.24	\$4,090.61	-100%	-73%
2006	\$577.25	\$1,853.80	\$12,577.56	\$14,065.98	-69%	-11%
2007	\$987.99	\$2,312.68	\$8,285.77	\$9,862.01	-57%	-16%
2008	\$1,536.65	\$280.65	\$4,905.24	\$2,585.23	448%	90%
2009	\$743.83	\$1,325.36	\$7,218.37	\$4,236.08	N/C	N/C
2010	\$41.21	\$666.71	\$1,999.20	\$2,122.69	N/C	N/C
2011	\$302.00	\$60.00	\$1,897.50	\$220.00	N/C	N/C
2012	\$0.00	n/a	\$422.81	n/a	N/C	N/C
Totals	\$4,208.93	\$7,155.84	\$39,216.10	\$39,477.70	-41%	-1%

RECORDS

The Records Division is responsible for providing administrative and clerical support to the department. Major responsibilities include entering the accident and incident reports and tickets into the records database management

system, assisting the general public for report requests, performing criminal backgrounds, serving as a switchboard at times, performing validations, and setting up and managing the payment plans out of court.

MONTHLY REPORT September 2012

October 5, 2012

RECORDS	This Month	This Month Last Year	YTD	Last YTD	Change By Month	Change YTD
Incident/Arrest Reports Processed	1157	1367	11179	12068	-15%	-7%
Accident Reports Processed	236	227	1874	1840	4%	2%
Citations Processed	3390	4369	36769	40072	-22%	-8%
Warnings Processed	804	643	7716	5652	25%	37%
Backgrounds	37	13	181	163	185%	11%
Fingerprints	180	87	1106	867	107%	28%
Photos	0	0	8	17	N/C	-53%
Accident Requests	105	137	1059	915	-23%	16%
Accident Requests Online	130	92	1016	1373	41%	-26%
TOTALS	6,039	6,935	60,908	62,967	-13%	-3%

PROFESSIONAL STANDARDS

The Office of Professional Standards, a unit within Administration, is charged with the compilation and updating of an extensive set of policies and procedures and providing a general operations guideline and code of conduct for officers to follow.

In the event that a member of the public does experience a negative interaction with an officer, mechanisms are in place for them to lodge a complaint. All complaints are reviewed and investigations completed in a timely manner.

Professional Standards	This Month	This Month Last Year	YTD	Last YTD	Change By Month	Change YTD
Opened (TOTAL)	5	2	55	36	150%	53%
Closed	5	2	55	34	150%	62%
Inquiries	5	2	49	28	150%	75%
Formal Investigations	0	0	6	9	N/C	-33%
Sustained	3	1	41	28	200%	46%
Not-Sustained	0	1	1	3	-100%	-67%
Exonerated	1	0	5	0	N/C	N/C
Unfounded	1	0	9	3	N/C	200%

END OF REPORT