
JPD Monthly Report

November 2010

Heather Clements,
Crime Analyst



Executive Summary

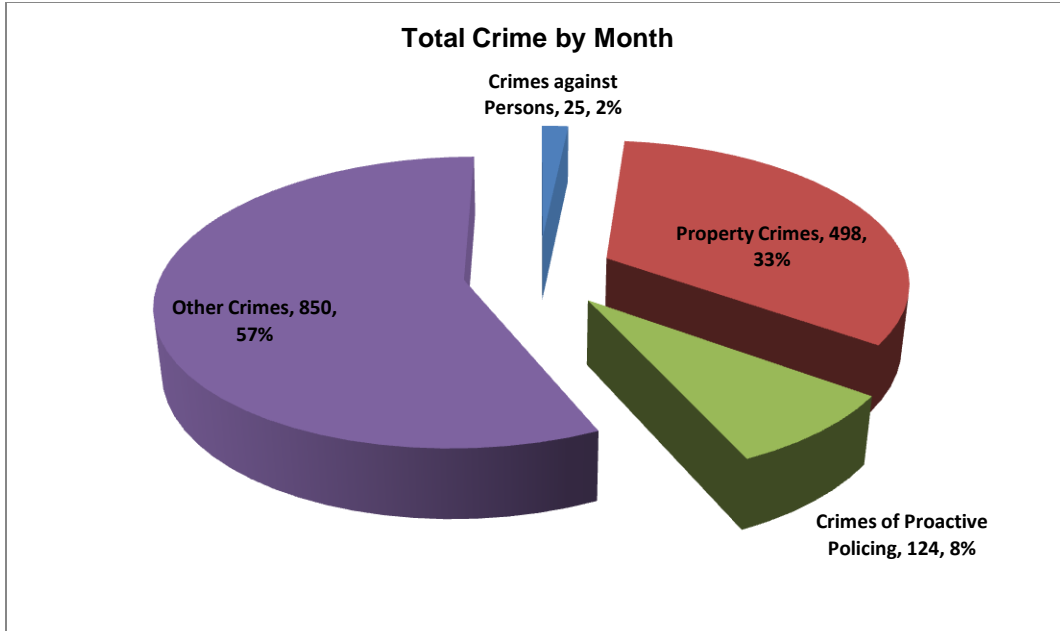
The purpose of the Jonesboro Police Department Monthly Report is to compile data into one integrated report for review, allowing for a seamless flow of information for better decision-making. After each department collates their monthly numbers and sends it to Crime Analysis, it is organized into sections of departmental data, analyzed and packaged, and finally disseminated to department heads, the Chief of Police, the City Mayor, and the City Council. Major sections include Crime Analysis, Emergency 911, Uniform Police Division, Prowl, Criminal Investigative Division, Warrants, Drug Task Force, Traffic, Parking Enforcement, Animal Control, Fleet Maintenance, Records, and Professional Standards.

Crime Analysis

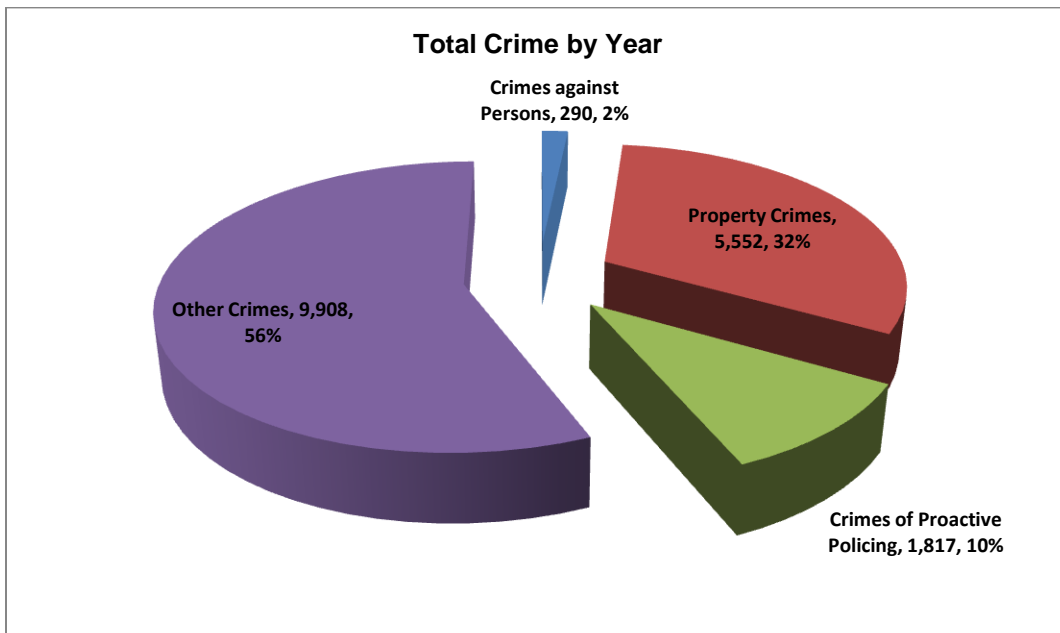
The Crime Analysis division consists of a Crime Analyst and a Crime Analyst Assistant. The Crime Analyst position is responsible for the analysis and dissemination of crime activity data and the collection and maintenance of crime intelligence information for the city of Jonesboro. Additionally, the Crime Analyst is charged with providing the department with current and accurate crime maps, presenting crime activity data to audiences of interest, and responding to requests for crime data from civilians and departmental staff. Data exported from this division is used by field agents for more effective, efficient policing, administration for improved staffing decisions, and the Mayor's office for community decision making and enhanced public relations. This section is broken down into total crime, crimes against persons, property crimes, crimes of proactive policing, other crimes, and arrest demographics.

Total Crime

The crime activity for this month is at a total of 1,497 offenses, up from 1,357 offenses last November, a 20% increase. Other Crimes absorb the majority of this month's crime activity at 57% ($n = 850$). Property crimes fall in second place with 33% ($n = 498$). Following in third and fourth places are crimes of proactive policing at 8% ($n = 124$) and crimes against persons at 2% ($n = 25$).

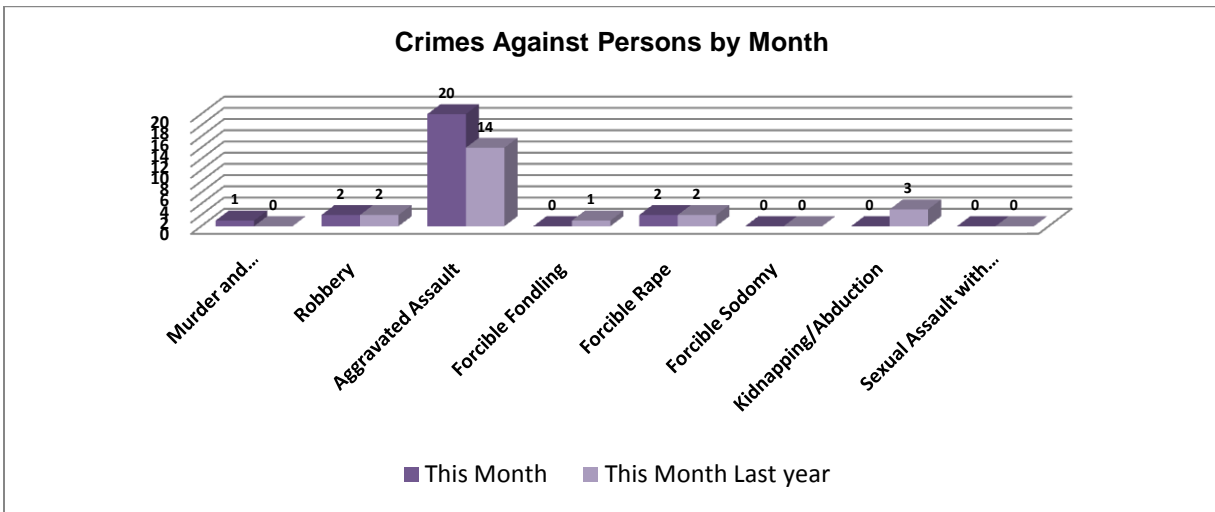


Year to date data includes January through November, of which there is a total of 17,567 offenses, up from 14,652 last November, a 40% increase. Again, other crimes has the highest percentage to total crimes at 56% ($n = 9,908$). Similar to this month's data, property crimes take second place at 32% ($n = 5,552$). Following are the crimes of proactive policing at 10% ($n = 1,817$) and crimes against persons at 2% ($n = 290$).

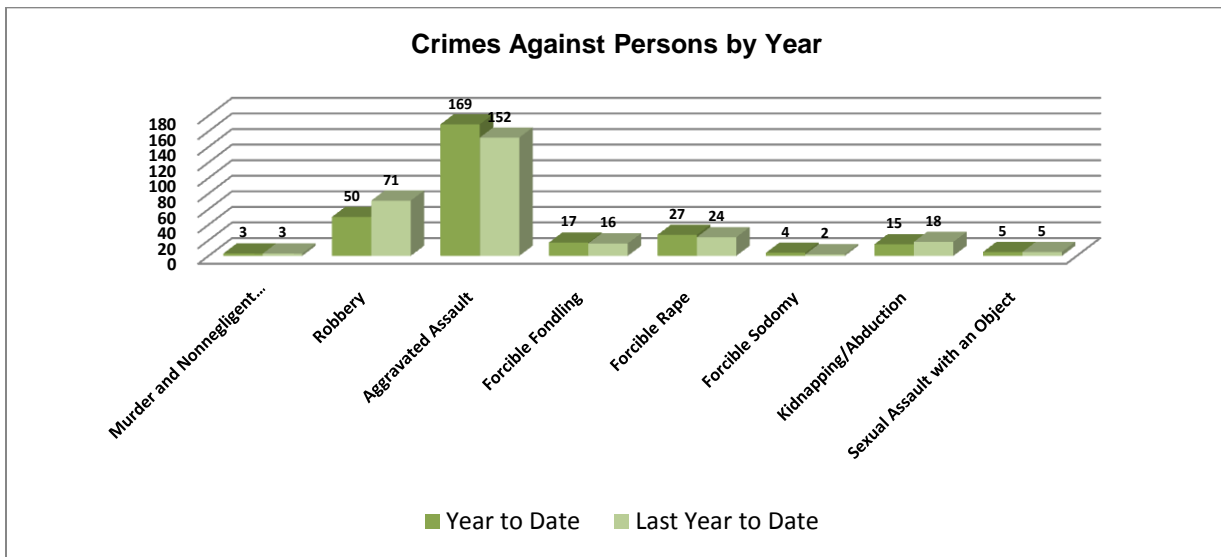


Crimes against Persons

There are 8 crimes that make up this section. There were a total of 25 offenses in this area this month, up from 22 last November, a 14% increase. The following chart demonstrates this month's activity compared to November of last year's activity in all 8 areas. The aggravated assaults are higher, up to 20 from 14, a 43% increase. The kidnapping/abduction was also higher this November, up 16%.



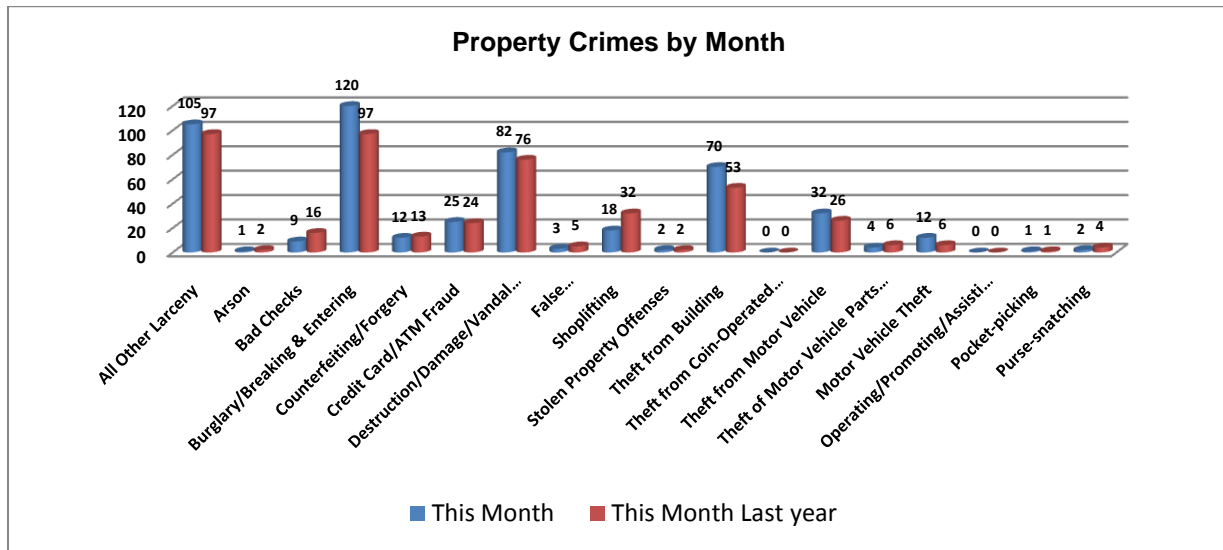
Below is a bar graph indicating the year to date data for crimes against persons. Total number of year to date crimes against persons this year is 290, down only by 1 from last November, an insignificant decrease (0% change). Robberies are down 30% from this time last year. The aggravated assaults are up by 11%.



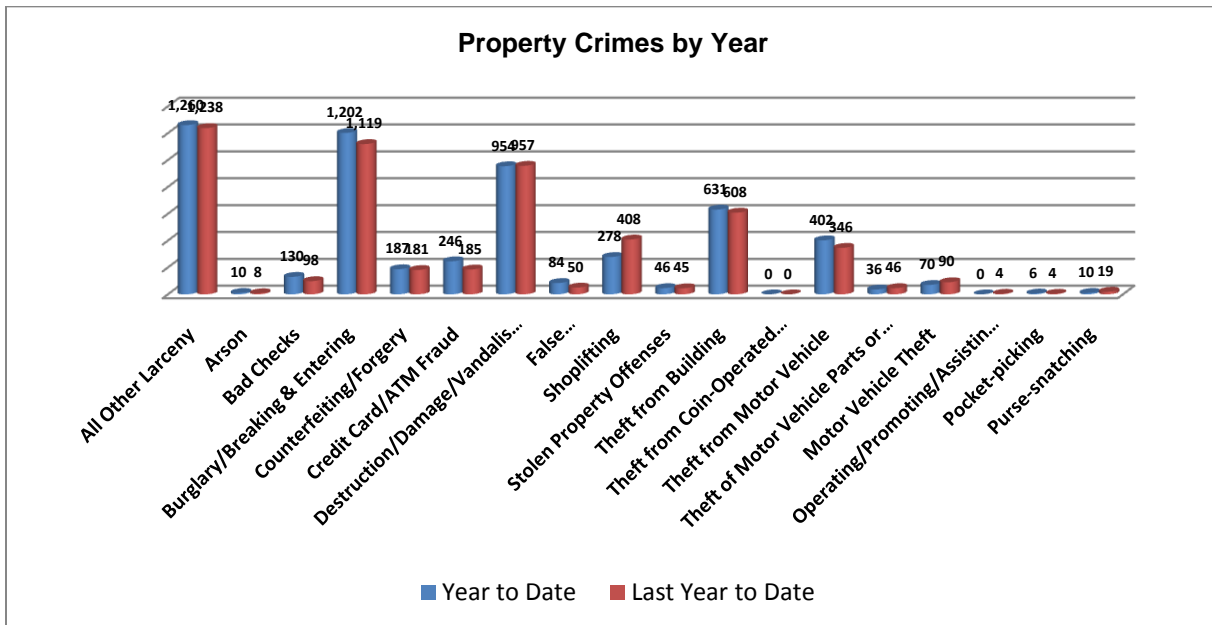
*Arkansas State University had 1 murder on campus in April, but this statistic is reported by ASU and not the City of Jonesboro.

Property Crimes

This section displays the criminal activity for 18 crimes, all against property. This month, there were a total of 498 property crimes, an 8% increase from last November. Shoplifting is significantly down; a 44% decrease from last November. Burglaries and theft from building are higher from last November, a 24% and 32% increase respectively. Motor vehicle theft is up, a 100% increase.

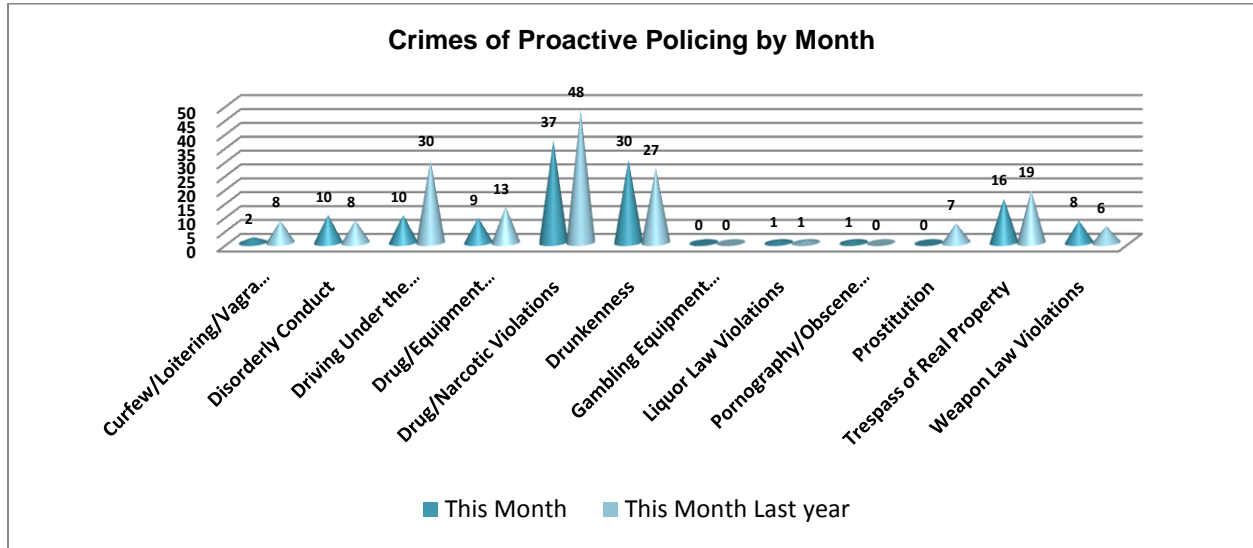


To date this year, 5,552 property offenses have occurred, up from 5,406 last year at this same time, a 3% increase. Whereas shoplifting is down 32%, credit card/ATM fraud and bad checks are up, both 33%. Motor vehicle theft and theft of motor vehicle parts or accessories are also up, both 22%. The theft from motor vehicle decreased 16%.

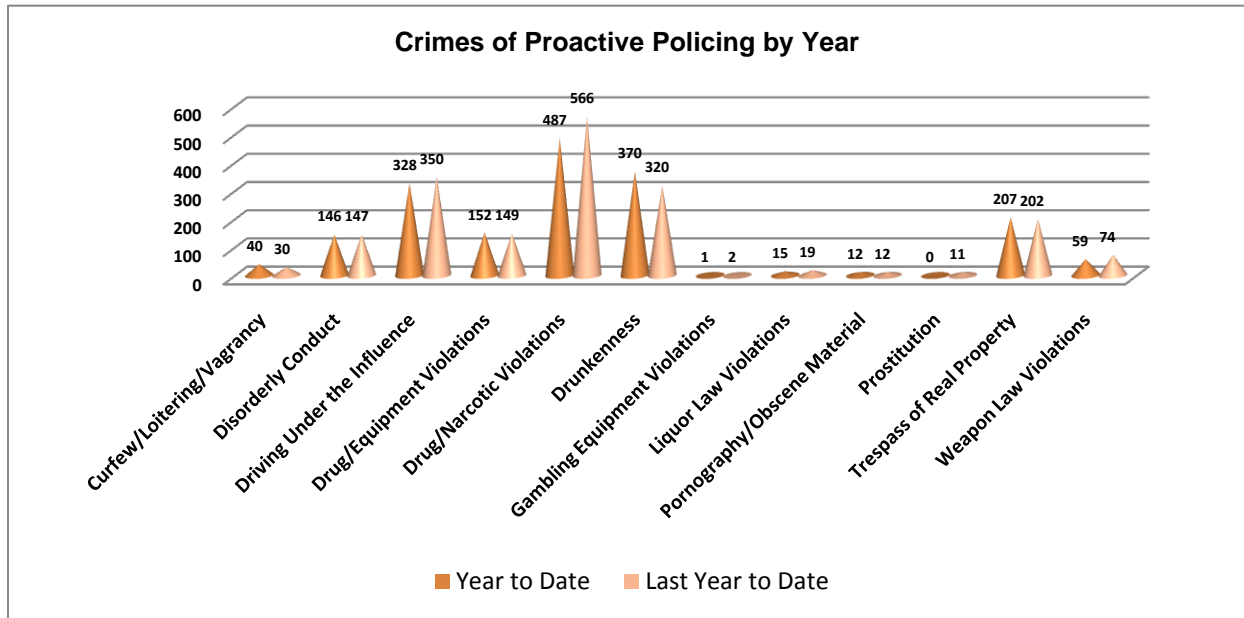


Crimes of Proactive Policing

Crimes of proactive policing are those crimes that result from police officers actively policing the streets to combat certain types of street crime. Twelve crimes fall under this category. A total of 124 offenses have occurred this month, a 26% decrease from last November ($n = 167$). Significant changes this month include a drop in drug/narcotics violations, 23% down, and a drop in driving under the influence, 67% down. Prostitution is down a 100% this month, comparing to November of the last year.

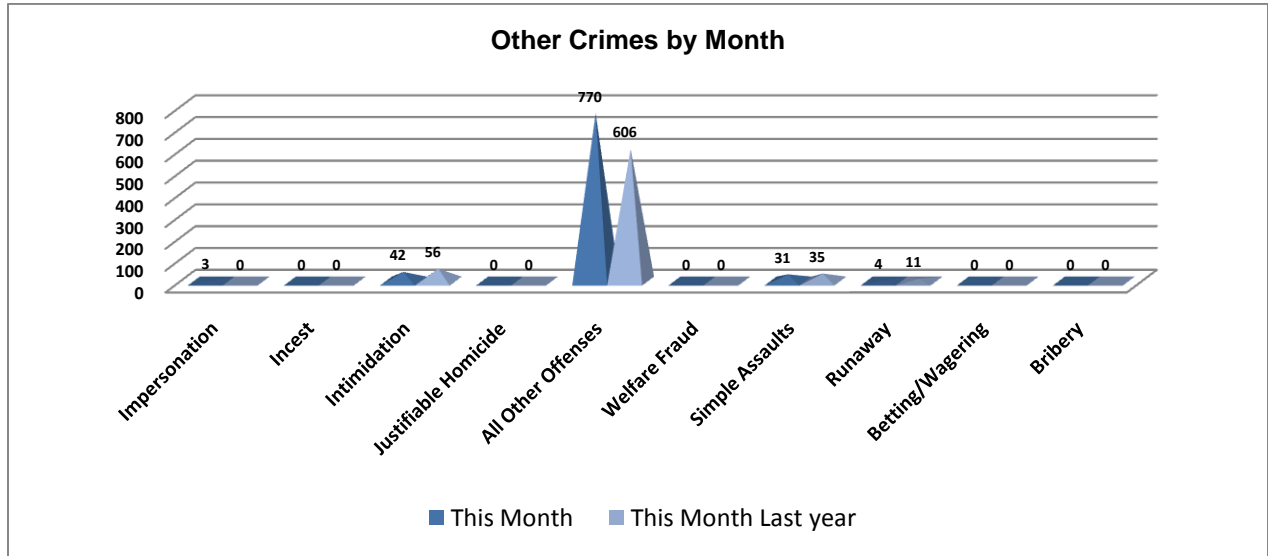


To date for the year, there have been 1,817 crimes of proactive policing, down from 1,882 last year. Prostitution is down 100%. Drug/narcotic violations are down 14%. Drunkenness is up 16%.

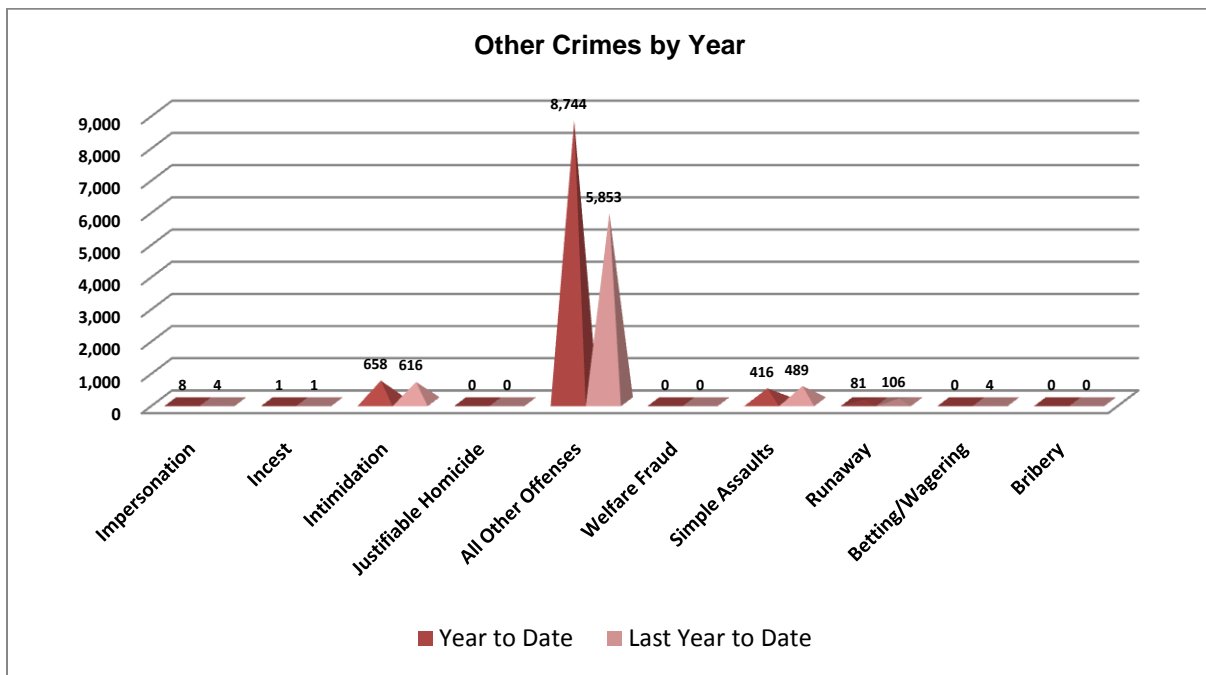


Other Crimes

There are 10 crimes that fall into the other crimes category. This month, there have been a total of 850 other crimes up from 708 last November, a 20% increase. Intimidation is down 25% and so is the simple assault, a 16% decrease. Significantly higher than last November are the all other offenses, up 27%.

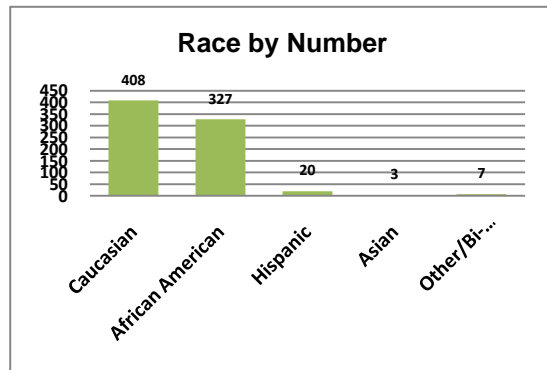
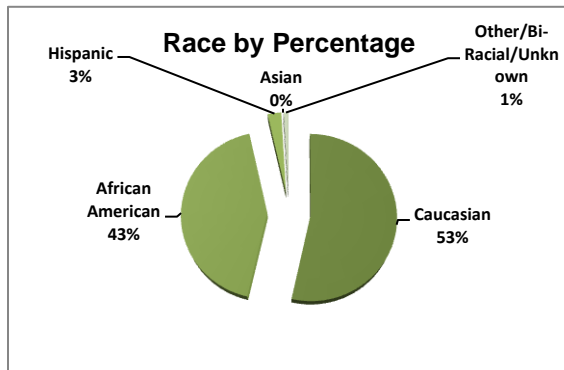
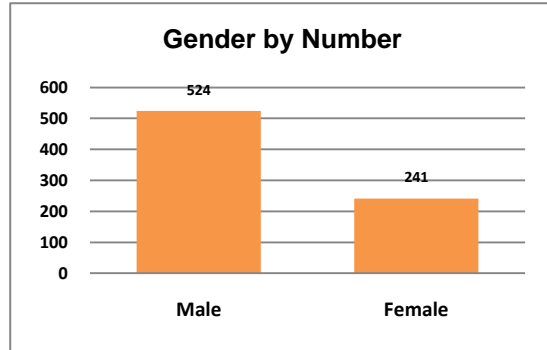
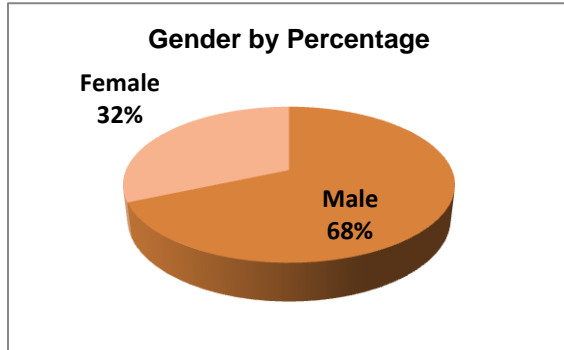


To date this year, there have been 9,908 other crimes, up from 7,073 last November, a 40% increase. Simple assault is down 15% and similar to above, all other offenses are up, a 49% increase.

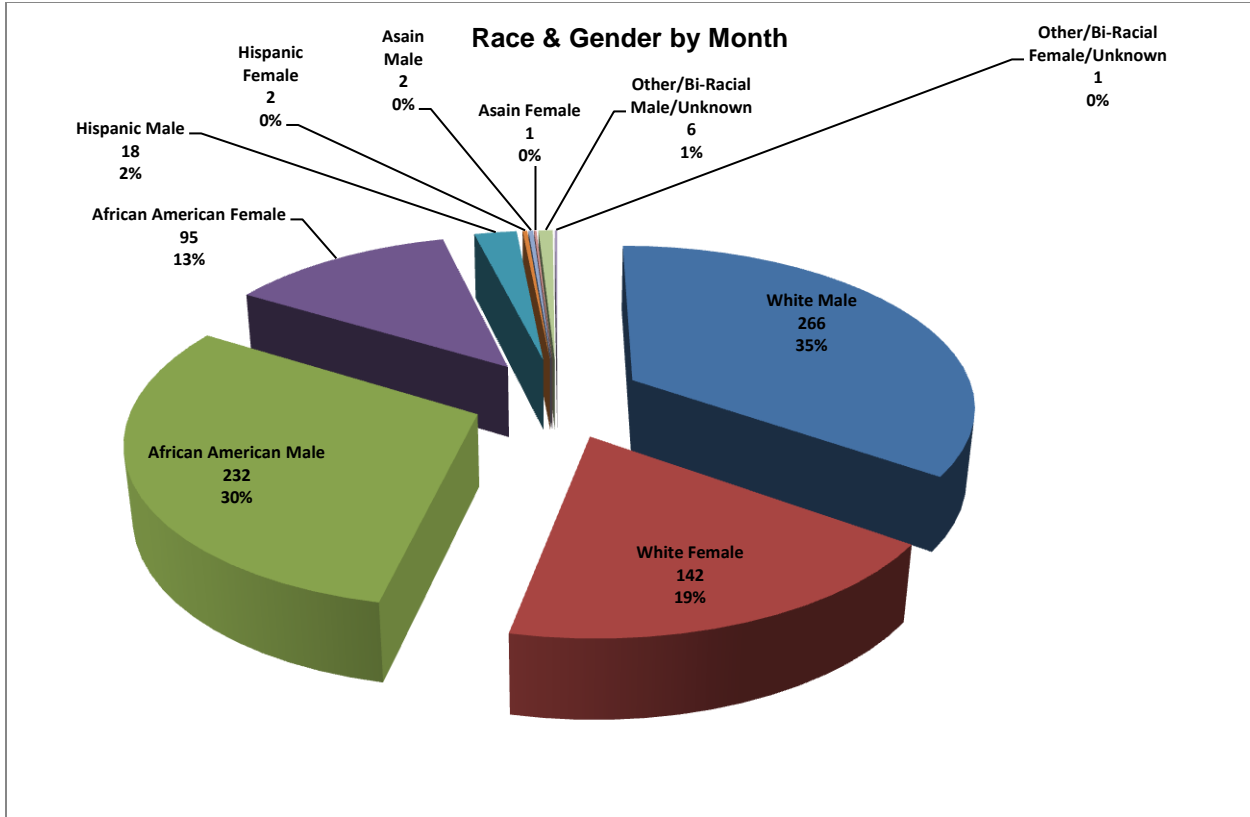


Arrest Demographics

This section will break down race and gender for the 765 arrests this month. The majority of offenders have been male ($n=524$), as opposed to female ($n=241$) and Caucasian ($n=408$) and African American ($n=327$) as opposed to Hispanic ($n=20$), Asian ($n=3$), or other/unknown/bi-racial ($n=7$).



Caucasian males make up the majority of offenders for the month of November, totaling 35% ($n = 266$). African American males account for 30% ($n = 232$) of the offenders this month. Caucasian females make up 19% ($n = 142$) and African American females make up 13% ($n = 95$). Hispanic males make up 2% ($n = 18$). There was a 1% of other/biracial male arrestees ($n=6$). There were 2 Hispanic females, 1 Asian male and 1 Asian female, and 1 other/bi-racial female arestees, insignificant percentage of the total of arestees. This distribution can be reviewed in the pie chart below (see page 9).



*Although the chart indicates a 0% for other/bi-racial female (n=1), hispanic female (n=2), asian male (n=2), and asian female (n=2), the percentage is so small that excel rounds it to 0%.

Emergency 911

Also known as Public Safety Answering Point (PSAP), the Emergency 911 Division is responsible for answering all calls from public for emergency assistance, accessing the needed information to best assist, and then assigning the most efficient and effective emergency response. In addition, this division is responsible for setting priority call dispatching to field units including Police, Fire, and EMS. Emergency 911 also maintains all records for radio logs, calls for service, and other emergency service data collections.

Calls by Type	This Month	This Month Last Year	YTD	Last YTD	Change By Month	Change YTD
Land Line	937	818	9,805	10,625	15%	-8%
Cell Phone	3,098	2,967	36,808	36,900	4%	0%
Admin Lines	14,592	14,208	171,264	170,544	3%	0%
TOTALS	18,627	17,993	217,877	218,069	4%	0%

Calls by Agency	This Month	This Month Last Year	YTD	Last YTD	Change By Month	Change YTD
Jonesboro PD Calls	5,490	5,454	67,184	75,787	1%	-11%
Craighead Cty Sheriff	1,031	1,030	11,696	13,651	0%	-14%
Jonesboro Fire Dpt - dispatch	176	210	1,845	2,017	-16%	-9%
Jonesboro Fire Dpt - Med Asst	101	78	1,266	2,053	29%	-38%
Craighead Cty - Fire	117	54	861	606	117%	42%
Craighead Cty - 1st Responder	97	68	860	881	43%	-2%
Emerson Ambulance	245	206	2,687	2,475	19%	9%
Medic One	290	290	3,218	3,256	0%	-1%
Air Evac	0	1	12	3	-100%	300%
Coroner	2	1	29	23	100%	26%
ARK State Police	14	18	170	132	-22%	29%
Jonesboro Animal Control	58	76	767	407	-24%	88%
Wreckers Called	133	205	1,846	2,181	-35%	-15%
TOTALS	7,754	7,691	92,441	103,472	1%	-11%

Calls by Municipality	This Month	This Month Last Year	YTD	Last YTD	Change By Month	Change YTD
Bay PD	59	135	1080	1704	-56%	-37%
Bono PD	226	148	2207	2375	53%	-7%
Brookland PD	138	163	2148	2577	-15%	-17%
Caraway PD	72	72	1082	885	0%	22%
Cash PD	39	120	559	675	-68%	-17%
Egypt PD	16	11	252	256	45%	-2%
Lake City PD	96	150	1329	1268	-36%	5%
Monette PD	125	122	1545	1726	2%	-10%
TOTALS	771	921	10,202	11,466	-16%	-11%

Uniform Patrol Division

The UPD is responsible for responding to calls into the Emergency – 911 Division by civilians and are normally the first responders. Jonesboro is divided into 6 patrol districts. Officers from UPD are assigned to a district and work the same district every shift. In addition, when a Traffic Officer is not available, a UPD Officer will respond to traffic accidents and assist in directing traffic when necessary.

Incidents	This Month	This Month Last Year	YTD	Last YTD	Change By Month	Change YTD
Street Accidents	91	100	1,137	1,139	-9%	0%
Private Property Accidents	28	28	524	496	0%	6%
Traffic Citations	630	745	7,747	6,439	-15%	20%
DWI	10	25	223	266	-60%	-16%
Mis. Arrests	2,926	1,181	19,988	16,361	148%	22%
Felony Arrests	150	119	1,573	1,460	26%	8%
Public Intoxication Arrests	6	11	95	102	-45%	-7%
Calls For Service	7,293	5,475	79,465	70,973	33%	12%
Alarms	217	186	2,484	2,501	17%	-1%
Parking Citations	5	1	21	36	400%	-42%
Written Warnings	625	537	9,010	5,090	16%	77%
TOTALS	11,981	8,408	122,267	104,863	42%	17%
Patrol Miles	65,281	52,004	685,457	655,242	26%	5%
Hours Worked	10,542	7,923	110,252	115,521	33%	-5%

Prowl

The Prowl unit is a uniformed street crimes unit specializing in criminal patrol, narcotics enforcement, gang investigation, and prostitution activity. The unit conducts directed patrols, investigates citizen complaints of street-level criminal activity, and directly assists the 2nd Judicial Drug Task Force. PROWL also assists any division within the Jonesboro Police Department at any time when needed.

Incidents	This Month	This Month Last Year	YTD	Last YTD	Change By Month	Change YTD
Street Accidents	0	0	0	1	N/C	-100%
Private Property Accidents	0	0	1	0	N/C	N/C
Traffic Citations	33	14	343	227	136%	51%
DWI	0	0	1	1	N/C	0%
Mis. Arrests	94	50	1,009	1,108	88%	-9%
Felony Arrests	21	30	303	417	-30%	-27%
Drug Arrests	26	24	304	372	8%	-18%
Public Intoxication Arrests	0	0	0	0	N/C	N/C
Calls For Service	109	58	1,010	757	88%	33%
Alarms	0	0	0	0	N/C	N/C
Parking Citations	0	0	0	0	N/C	N/C
Written Warnings	35	8	255	207	338%	23%
Assists	0	0	0	0	N/C	N/C
TOTALS	318	184	3,226	3,090	73%	4%
Value of Drugs Seized	\$5,030	\$19,185	\$74,268	\$173,161	-74%	-57%
Value of Assets Seized	8,010	1,475	66,160	97,383	443%	-32%
Patrol Miles	5,900	4,950	56,200	57,835	19%	-3%

Criminal Investigative Division

The CID is responsible for conducting follow-up investigations into criminal acts reported to the Jonesboro Police Department. The primary goal is to collect and present evidence that conclusively leads to a successful arrest. Additionally, CID is charged with clearing additional crimes, recovering stolen property, preventing additional crimes, and gathering intelligence information.

Investigations	This Month	This Month Last Year	YTD	Last YTD	Change By Month	Change YTD
Criminal Investigations Assigned	87	82	985	1029	6%	-4%
Criminal Investigations Closed	81	57	926	855	42%	8%
Cleared by Arrests	56	24	529	440	133%	20%
Unfounded	6	6	95	115	0%	-17%
Exceptionally Cleared	12	13	156	182	-8%	-14%
Filed With Prosecutors Office	1	5	71	43	-80%	65%
TOTALS	243	187	2762	2664	30%	4%

Crimes Against Persons	This Month	This Month Last Year	YTD	Last YTD	Change By Month	Change YTD
Criminal Investigations Assigned	21	16	205	235	31%	-13%
Criminal Investigations Closed	21	14	217	236	50%	-8%
Cleared by Arrests	1	6	127	144	-83%	-12%
Unfounded	2	0	12	28	N/C	-57%
Exceptionally Cleared	0	4	45	53	-100%	-15%
Filed With Prosecutors Office		2	15	9	-100%	67%
TOTALS	45	42	621	705	7%	-12%

Property Crimes	This Month	This Month Last Year	YTD	Last YTD	Change By Month	Change YTD
Criminal Investigations Assigned	61	61	692	682	0%	1%
Criminal Investigations Closed	49	33	564	485	48%	16%
Cleared by Arrests	36	17	353	277	112%	27%
Unfounded	2	6	65	71	-67%	-8%
Exceptionally Cleared	10	8	102	112	25%	-9%
Filed With Prosecutors Office	1	2	44	25	-50%	76%
TOTALS	159	127	1820	1652	25%	10%

Crimes Against Children	This Month	This Month Last Year	YTD	Last YTD	Change By Month	Change YTD
Criminal Investigations Assigned	3	3	59	57	0%	4%
Criminal Investigations Closed	5	3	70	54	67%	30%
Cleared by Arrests	2	1	32	16	100%	100%
Unfounded	3	0	19	17	N/C	12%
Exceptionally Cleared	0	1	7	10	-100%	-30%
Filed With Prosecutors Office	0	1	4	1	-100%	300%
TOTALS	13	9	191	155	44%	23%

Warrants

The Warrants Division is responsible for serving warrants, criminal summonses, and subpoenas that are issued by the District Court. On city court days, the Warrants Division provides a bailiff for court and a transport officer. In addition, this Division is responsible for transporting wanted persons arrested in other jurisdictions back to Jonesboro. The STEP program operates within this division and is a grant-funded operation in which officers can get paid overtime to enforce the safety belt law.

Arrests	This Month	This Month Last Year	YTD	Last YTD	Change By Month	Change YTD
Misdemeanor	1293	698	13196	7824	85%	69%
Felony	0	0	6	8	N/C	-25%
Total Arrests	1293	698	13202	7832	85%	69%

Warrants by Activity	This Month	This Month Last Year	YTD	Last YTD	Change By Month	Change YTD
Subpoenas	264	329	4174	5406	-20%	-23%
Commitments	2	2	39	36	0%	8%
Traffic Citations	1	0	17	4	N/C	325%
Complaints	0	0	0	0	N/C	N/C
Assist	0	0	0	0	N/C	N/C
Alarms	0	0	0	0	N/C	N/C

Hours by Activity	This Month	This Month Last Year	YTD	Last YTD	Change By Month	Change YTD
SI Criminal	316.5	190.42	2577.37	1823.71	66%	41%
Court	126.5	108.67	1383.58	1042.34	16%	33%
Prisoner Transport	26	35.5	317.17	857.17	-27%	-63%

Hours Worked	This Month	This Month Last Year	YTD	Last YTD	Change By Month	Change YTD
Regular Hours Worked	731	529	7165.5	6000.5	38%	19%
Overtime Hours Worked	2.5	6.75	63	37	-63%	70%
TOTAL Hours Worked	733.5	535.75	7228.5	6037.5	37%	20%

Mileage	This Month	This Month Last Year	YTD	Last YTD	Change By Month	Change YTD
Total Mileage	3308	2395	33958	24642	38%	38%

STEP	This Month	This Month Last Year	YTD	Last YTD	Change By Month	Change YTD
DWI Arrest	0	1	11	1	-100%	1000%
DUI Arrest	0	0	0	0	N/C	N/C
Traffic Citations	286	92	2014	1259	211%	60%
Felony Arrests	0	0	2	1	N/C	100%
Drug Arrests	0	0	0	0	N/C	N/C
Hours Worked	252.5	126.5	1542.5	2187.25	100%	-29%
Miles Driven	714	996	8916	8572	-28%	4%

Drug Task Force

The DTF is responsible for investigating major drug traffickers in the area, including all types of illegal drugs. They work closely with local, state, and federal agencies to eradicate drugs from the community.

INVESTIGATIONS	This Month	This Month Last Year	YTD	Last YTD	Change By Month	Change YTD
Opened	24	35	298	325	-31%	-8%
Closed	14	18	256	286	-22%	-10%
TOTAL	26	38	338	364	-32%	-7%

With Nexus to Jonesboro	This Month	This Month Last Year	YTD	Last YTD	Change By Month	Change YTD
Opened	25	36	265	343	-31%	-23%
Closed		0		0	N/C	N/C
TOTAL	25	36	265	343	-31%	-23%

Outside Jonesboro (No Known Nexus)	This Month	This Month Last Year	YTD	Last YTD	Change By Month	Change YTD
Opened	1	0	17	17	N/C	0%
Closed	0	0		0	N/C	N/C
TOTAL	1	0	17	17	N/C	0%

ASSISTANCE RENDERED	This Month	This Month Last Year	YTD	Last YTD	Change By Month	Change YTD
Assist to Outside Agencies	1	0	30	44	N/C	-32%
Assist to Jonesboro UPD/CID	13	17	163	194	-24%	-16%

ARRESTS	This Month	This Month Last Year	YTD	Last YTD	Change By Month	Change YTD
Miscellaneous	5	14	59	116	-64%	-49%
Felony	22	34	377	293	-35%	29%
Marijuana	2	12	75	72	-83%	4%
Cocaine	3	3	20	19	0%	5%
Crack Cocaine	2	4	42	55	-50%	-24%
Methamphetamine/ICE	7	7	91	76	0%	20%
LSD	0	0	0	0	N/C	N/C
Ecstasy (MDMA or Other Designer Drug)	0	1	5	9	-100%	-44%
Prescription	0	8	18	40	-100%	-55%
Opiates (Heroin,Opium)	0	0	0	9	N/C	-100%
Labs	2	3	26	28	-33%	-7%
All Other Drug Offenses	0	0	0	1	N/C	-100%

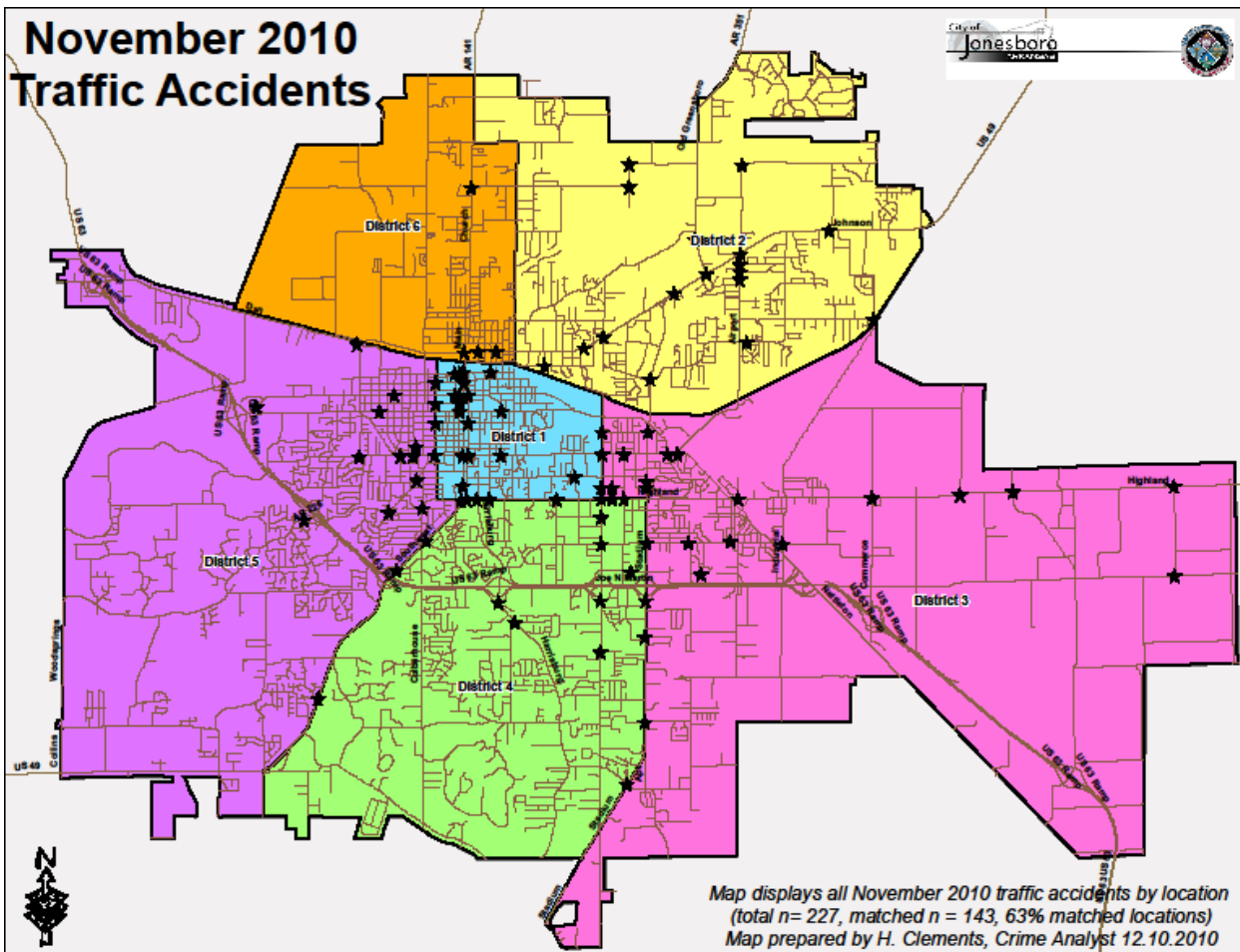
ASSET FORFEITURE	This Month	This Month Last Year	YTD	Last YTD	Change By Month	Change YTD
Vehicles Seized(No.)	0	0	5	5	N/C	0%
Value of Assets Seized(Includes Value of vehicles)	\$12,000	\$100	\$56,157	\$94,902	11900%	-41%
Asset Value Awarded to Jonesboro PD (State)		\$0	\$0	\$0	N/C	N/C
Asset Value Awarded to Jonesboro PD (Federal)		\$0	\$0	\$0	N/C	N/C
Asset Value Awarded to Jonesboro PD (Total)		\$0	\$0	\$0	N/C	N/C

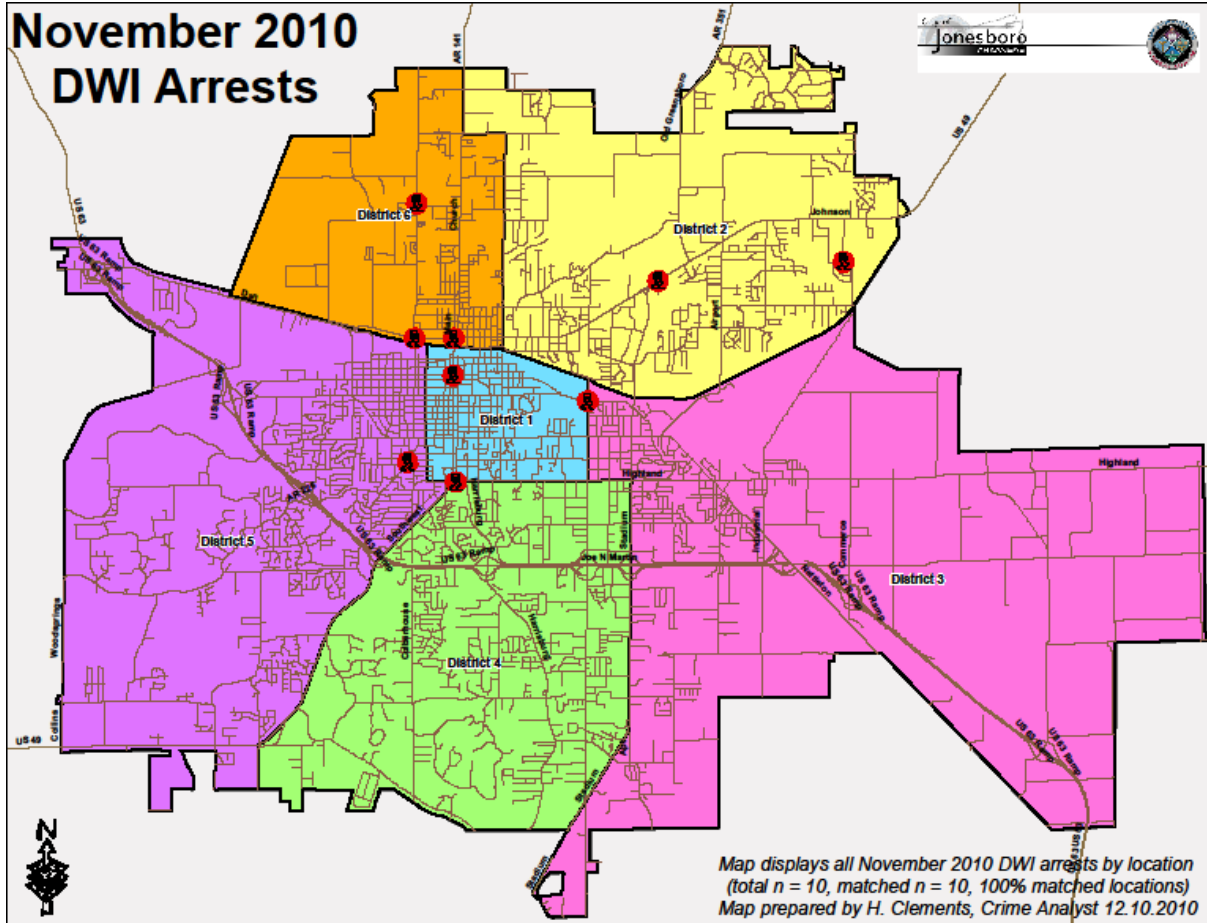
ARRESTS DEMOGRAPHY	This Month	This Month Last Year	YTD	Last YTD	Change By Month	Change YTD
White	10	12	144	184	-17%	-22%
African American	4	10	77	111	-60%	-31%
Latino	1	3	29	22	-67%	32%
Asian	0	0	1	0	N/C	N/C
Other/Bi-Racial	0	0	0	0	N/C	N/C
Male	12	16	190	222	-25%	-14%
Female	4	7	47	69	-43%	-32%
White Male	8	5	108	118	60%	-8%
White Female	2	6	39	54	-67%	-28%
African American Male	2	8	74	90	-75%	-18%
African American Female	2	0	5	18	N/C	-72%
Latino Male	1	3	24	19	-67%	26%
Latino Female	0	0	3	3	N/C	0%
Asian Male	0	0	1	0	N/C	N/C
Asian Female	0	0	0	0	N/C	N/C
Other/Bi-Racial Male	0	0	0	0	N/C	N/C
Other/Bi-Racial Female	0	0	0	0	N/C	N/C

Traffic

Comprised of three motor units and three Chargers, the Traffic Enforcement Unit responds to traffic accidents and provides increased enforcement in particularly challenging areas. This unit also provides extra coverage for specific congestion problems and special events in the community. Last, they work details targeting specific issues, such as DWI enforcement and traffic safety checkpoints.

Incidents	This Month	This Month Last Year	YTD	Last YTD	Change By Month	Change YTD
Street Accidents	135	112	1432	1388	21%	3%
Private Property Accidents	31	40	399	442	-23%	-10%
Traffic Citations	165	218	2569	2974	-24%	-14%
DWI	0	2	30	35	-100%	-14%
Mis. Arrests	11	10	223	259	10%	-14%
Felony Arrests	0	1	38	14	-100%	171%
Drug Arrests	0	0	0	0	N/C	N/C
Public Intoxication Arrests	0	0	2	0	N/C	N/C
Calls For Service	227	202	2929	2571	12%	14%
Alarms	4	0	20	20	N/C	0%
Parking Citations	0	0	0	27	N/C	-100%
Written Warnings	117	29	1202	73	303%	1547%
TOTALS	690	614	8844	7803	12%	13%
Value of Asstes Seized	\$0	\$0	\$0	\$0	N/C	N/C
Patrol Miles	4,906	4,755	57,424	56,801	3%	1%
Hours Worked	707	726	8462.5	8799.5	-3%	-4%





Parking Enforcement

The Parking Enforcement Division is responsible for enforcing parking laws in the downtown area. This service provides a safe and convenient parking situation for the public.

CITATIONS ISSUED	This Month	This Month Last Year	YTD	Last YTD	Change By Month	Change YTD
Citations	43	55	519	764	-22%	-32%
Verbal Warnings	0	0	0	0	N/C	N/C

MINUTES BY ACTIVITY	This Month	This Month Last Year	YTD	Last YTD	Change By Month	Change YTD
Office	335	740	10,355	11,413	-55%	-9%
Admin(Non-Office)	465	485	9,480	9,601	-4%	-1%
Community	0	0	0	0	N/C	N/C
Training	0	0	0	0	N/C	N/C
Patrol	4,240	4,805	41,685	36,770	-12%	13%

Animal Control

The Animal Control Division is responsible for educating the public on safe and humane issues regarding animal treatment, enforcing all animal laws and ordinances, assisting the public in resolving animal issues, and protecting the safety and welfare of the citizens and animals in this community.

Incidents	This Month	This Month Last Year	YTD	Last YTD	Change By Month	Change YTD
Barking Complaints	16	23	97	107	-30%	-9%
Bite Reports	9	15	101	126	-40%	-20%
Door Hangers	37	44	353	291	-16%	21%
Welfare Checks	101	81	833	701	25%	19%
Advised of Rights	285	273	2,865	2,352	4%	22%
Incident Reports	6	1	60	68	500%	-12%
Gone on Arrival	59	90	456	660	-34%	-31%
Complaints	598	628	6,613	6,313	-5%	5%
Desk Complaints	839	889	9,443	8,248	-6%	14%
Captured Dogs	115	123	1,321	1,198	-7%	10%
Captured Cats	10	5	120	136	100%	-12%
Captured Wildlife	10	19	305	254	-47%	20%
Chemical Captures	13	2	70	82	550%	-15%
Traps	8	34	202	225	-76%	-10%
Deceased Animals	62	83	752	916	-25%	-18%
Assist J.P.D.	6	6	72	53	0%	36%
Assist C.S.O.	0	2	2	10	-100%	-80%
Public Relations	403	343	5,530	2,434	17%	127%
CITATIONS ISSUED	105	7	525	236	1400%	122%
WARNINGS ISSUED	71	29	440	283	145%	55%
Physical Arrests	0	0	10	11	N/C	-9%
City Warrants Served	3	1	29	15	200%	93%
County Warrants Served	0	0	1	0	N/C	N/C
Euthanized	68	65	632	728	5%	-13%
Euthanized for Humane Society	0	0	0	72	N/C	-100%
Deceased Animals Landfill lbs.	2,540	4,800	40,592	47,440	-47%	-14%
Wildlife Euthanized	10	19	305	254	-47%	20%
Sent to Rescue Centers	1	8	122	106	-88%	15%
Adoptions	30	23	358	228	30%	57%
Miles Driven	7,381	6,450	82,260	92,797	14%	-11%

Fleet Maintenance

The Fleet Maintenance is responsible for all of the police vehicle maintenance upkeep, cleanliness, and purchasing. In addition, this Division handles most of the purchasing of equipment, supplies, and uniforms for all of the Police Department.

Repair Costs by Model Year	This Month	This Month Last Year	YTD	Last YTD	Change By Month	Change YTD
95-99	\$0.00	\$0.00	\$583.68	\$1,155.90	N/C	-50%
2000	\$0.00	\$0.00	\$550.38	\$2,324.28	N/C	-76%
2001	\$0.00	\$0.00	\$323.26	\$427.80	N/C	-24%
2002	\$0.00	\$0.00	\$2,054.11	\$0.00	N/C	N/C
2003	\$0.00	\$0.00	\$577.11	\$535.11	N/C	8%
2004	\$119.29	\$488.94	\$9,339.13	\$6,510.33	-76%	43%
2005	\$1,817.39	\$2,795.73	\$10,805.60	\$10,099.66	-35%	7%
2006	\$3,953.60	\$2,468.54	\$36,305.27	\$17,204.25	60%	111%
2007	\$1,443.43	\$276.26	\$13,104.88	\$4,492.42	422%	192%
2008	\$0.00	\$81.43	\$1,408.42	\$3,971.56	-100%	-65%
2009	\$11.23	\$0.00	\$1,002.42	\$6,175.71	N/C	N/C
2010	\$0.00	n/a	\$311.95	n/a	N/C	N/C
TOTALS	\$7,344.94	\$6,110.90	\$76,366.21	\$52,897.02	20%	44%

Routine Preventative Maintenance by Model Year	This Month	This Month Last Year	YTD	Last YTD	Change By Month	Change YTD
95-99	\$0.00	\$0.00	\$73.50	\$188.30	N/C	-61%
2000	\$0.00	\$20.00	\$29.00	\$269.30	-100%	-89%
2001	\$50.24	\$0.00	\$110.24	\$1,221.96	N/C	-91%
2002	\$0.00	\$0.00	\$92.50	\$0.00	N/C	N/C
2003	\$0.00	\$0.00	\$985.15	\$973.50	N/C	1%
2004	\$100.50	\$662.43	\$5,577.93	\$4,685.35	-85%	19%
2005	\$2,677.65	\$175.00	\$7,592.34	\$6,807.59	1430%	12%
2006	\$2,672.91	\$2,741.68	\$18,519.93	\$16,696.33	-3%	11%
2007	\$1,442.88	\$763.80	\$13,082.97	\$10,897.21	89%	20%
2008	\$60.00	\$240.00	\$2,656.38	\$2,065.92	-75%	29%
2009	\$560.18	\$40.00	\$3,038.96	\$3,784.27	N/C	N/C
2010	\$0.00	n/a	\$2,022.50	n/a	N/C	N/C
TOTALS	\$7,564.36	\$4,642.91	\$53,781.40	\$47,589.73	63%	13%

Records

The Records Division is responsible for providing administrative and clerical support to the department. Major responsibilities include entering the accident and incident reports and tickets into the records database management system, assisting the general public for report requests, performing criminal backgrounds, serving as a switchboard at times, performing validations, and setting up and managing the payment plans out of court.

RECORDS	This Month	This Month Last Year	YTD	Last YTD	Change By Month	Change YTD
Incident/Arrest Reports Processed	1,129	1,117	13,532	11,901	1%	14%
Accident Reports Processed	227	227	2,547	2,512	0%	1%
Citations Processed	3,935	3,151	45,376	37,558	25%	21%
Warnings Processed	446	313	6,203	3,325	42%	87%
Backgrounds	10	12	181	120	-17%	51%
Fingerprints	58	70	791	962	-17%	-18%
Photos	0	1	15	21	-100%	-29%
Accident Requests	96	116	1,048	1,300	-17%	-19%
Accident Requests Online	175	193	1,795	1,810	-9%	-1%
TOTALS	6,076	5,200	71,488	59,509	17%	20%

Professional Standards

The Office of Professional Standards, a unit within Administration, is charged with the compilation and updating of an extensive set of policies and procedures and providing a general

operations guideline and code of conduct for officers to follow. In the event that a member of the public does experience a negative interaction with an officer, mechanisms are in place for them to lodge a complaint. All complaints are reviewed and investigations completed in a timely manner.

	This Month	This Month Last Year	YTD	Last YTD	Change By Month	Change YTD
Opened (TOTAL)	7	6	63	62	17%	2%
Closed	7	6	63	62	17%	2%
Inquiries	7	6	61	57	17%	7%
Formal Investigations	0	0	2	5	N/C	-60%
Sustained	5	5	48	42	0%	14%
Not-Sustained	2	0	6	5	N/C	20%
Exhonerated	0	0	2	7	N/C	-71%
Unfounded	0	1	7	8	-100%	-13%