

# JONESBORO POLICE DEPARTMENT

## Monthly Report

### December 2013

#### **IN THIS REPORT**

<b>CRIME ANALYSIS .....</b>	<b>1</b>
Total Crime .....	2
Crimes against Person .....	3
Property Crimes .....	4
Crimes of Proactive Policing	5
Other Crimes.....	7
Arrests Demographics .....	8
<b>EMERGENCY 911 .....</b>	<b>9</b>
<b>UPD .....</b>	<b>10</b>
<b>PROWL .....</b>	<b>10</b>
<b>CID .....</b>	<b>11</b>
<b>WARRANTS .....</b>	<b>12</b>
<b>DRUG TASK FORCE ....</b>	<b>13</b>
<b>TRAFFIC .....</b>	<b>14</b>
Maps .....	15
<b>ANIMAL CONTROL .....</b>	<b>16</b>
<b>FLEET MAINTENANCE</b>	<b>16</b>
<b>RECORDS .....</b>	<b>17</b>
<b>PROFESSIONAL</b>	
<b>STANDARDS .....</b>	<b>18</b>

*The purpose of the Jonesboro Police Department Monthly Report is to compile data into one integrated report for review, allowing for a seamless flow of information for better decision-making. After each department collates their monthly numbers and sends it to the Office of Crime Analysis, it is organized into sections of departmental data, analyzed and packaged, and finally disseminated to department heads, the Chief of Police, the City Mayor, and the City Council. Major sections include Crime Analysis, Emergency 911, Uniform Police Division, Prowl, Criminal Investigative Division, Warrants, Drug Task Force, Traffic, Parking Enforcement, Animal Control, Fleet Maintenance, Records, and Professional Standards.*

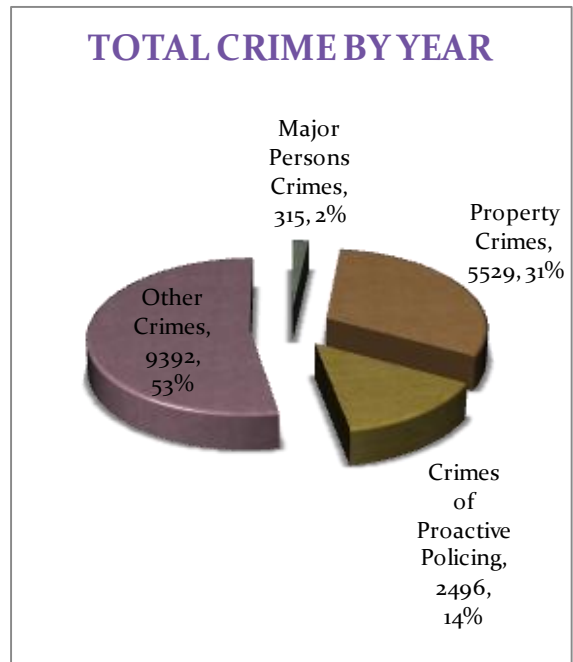
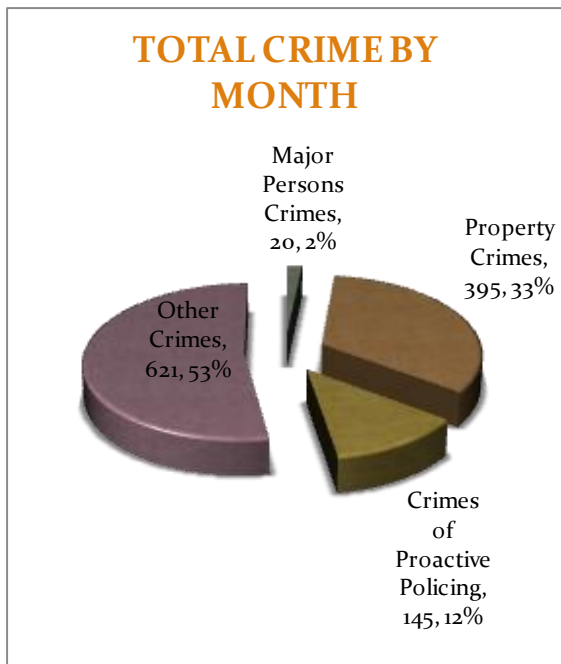
#### **CRIME ANALYSIS**

The Crime Analysis division consists of one Crime Analyst and one part-time Crime Analyst Assistant. The Crime Analyst position is responsible for the analysis and dissemination of crime activity data and the collection and maintenance of crime intelligence information for the city of Jonesboro. Additionally, the Crime Analyst is charged with providing the department with current and accurate crime maps, presenting crime activity data to audiences of interest, and with responding to requests for crime data from civilians and departmental staff. Data exported from this division is used by field agents for more effective, efficient policing, administration for improved staffing decisions, and the Mayor's office for community decision making and enhanced public relations. The following section is broken down into Total Crime, Crimes against Persons, Property Crimes, Crimes of Proactive Policing, Other Crimes, Arrest Demographics, and Total Crime Monthly Comparison.

**TOTAL CRIME**

The crime activity for the month of December 2013 was at a total of 1,181 NIBRIS reportable offenses, a -15% decrease, comparing to the total of offenses reported in December of the last year. With Jonesboro population estimated to be equal to 69,856, the crime rate in December of this year was at 17 crimes per 1,000 population, comparing to 20 crimes per 1,000 population last year<sup>1</sup>, a -16% decrease. As indicated on a pie chart below, Other Crimes absorb the majority, 53%, of this month's crime activity (n = 621). Property Crimes fall into a second place and comprise of 33% of all the crimes (n = 395). Following in third and fourth places are, respectively, Crimes of Proactive Policing, comprising of 12% (n = 145) of all the crimes, and Crimes against Persons, comprising of 2% (n = 20) of all the crimes this month.

Year to date data includes number of crimes from January through December 2013. A total of 17,721 NIBRIS reportable offenses were reported in 2013, a -5% decrease, comparing to the same period last year. The year to date crime rate amounts to 254 offenses per 1,000 population, compared to 272 offenses per 1,000 population last year (down -7%). To date this year, 53% of all the crimes is attributed to Other Crimes category (n = 9,392). Property Crimes amount to 31% of all the crimes (n = 5,529), Crimes of Proactive Policing comprise of 14% of all the crimes to date, where n = 2,496; Crimes against Persons comprise of 2% of a total year to date number of crimes (n = 315).

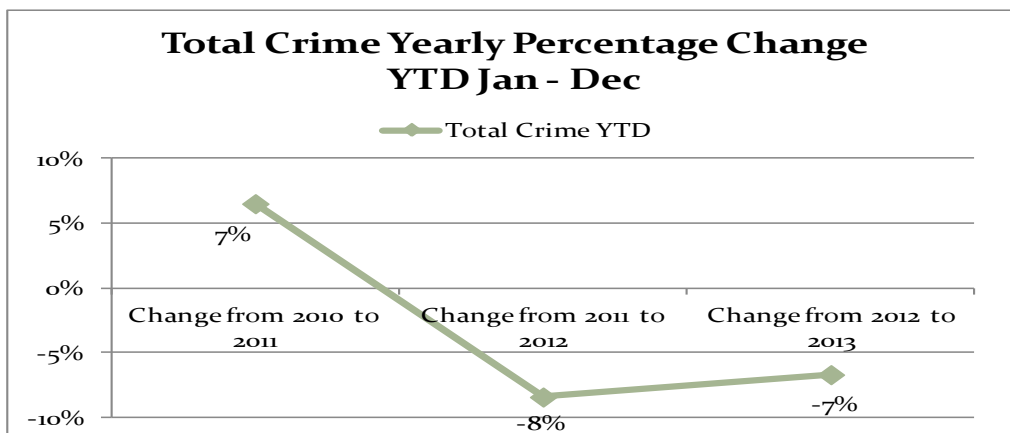
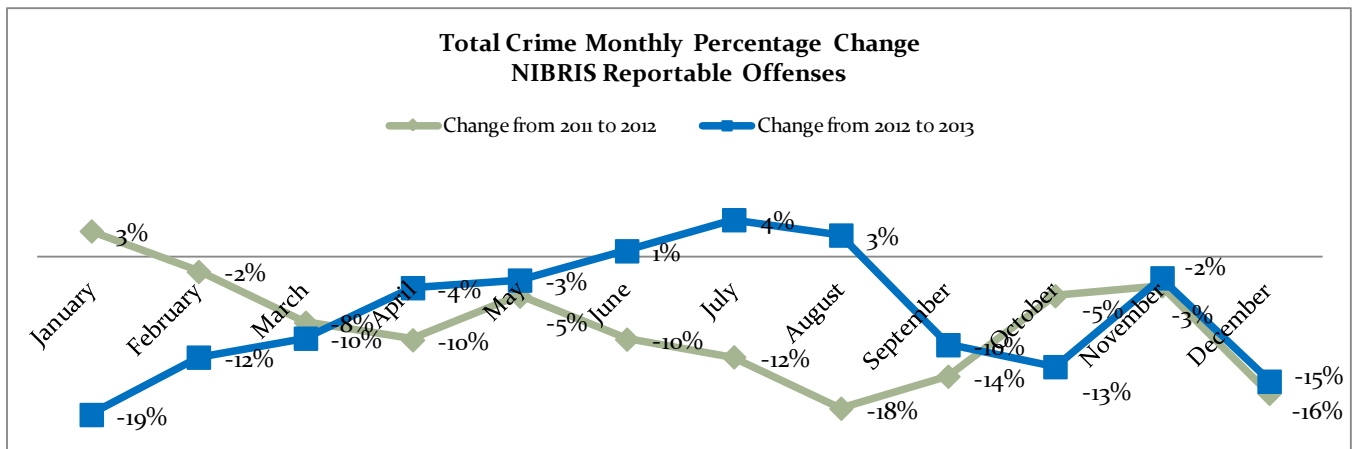
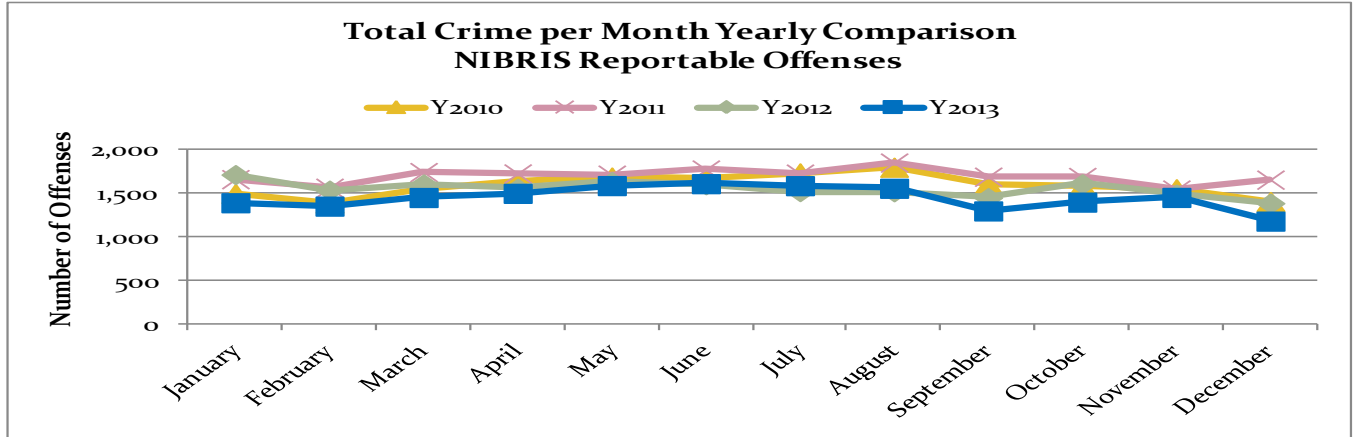


The line charts below depict frequencies of crime and a monthly and yearly percentage change from the last year.

<sup>1</sup> Note: Population numbers are based on 2011 & 2012 population estimate, where 2011 population estimate is 68,547.

# MONTHLY REPORT December 2013

January 3, 2014



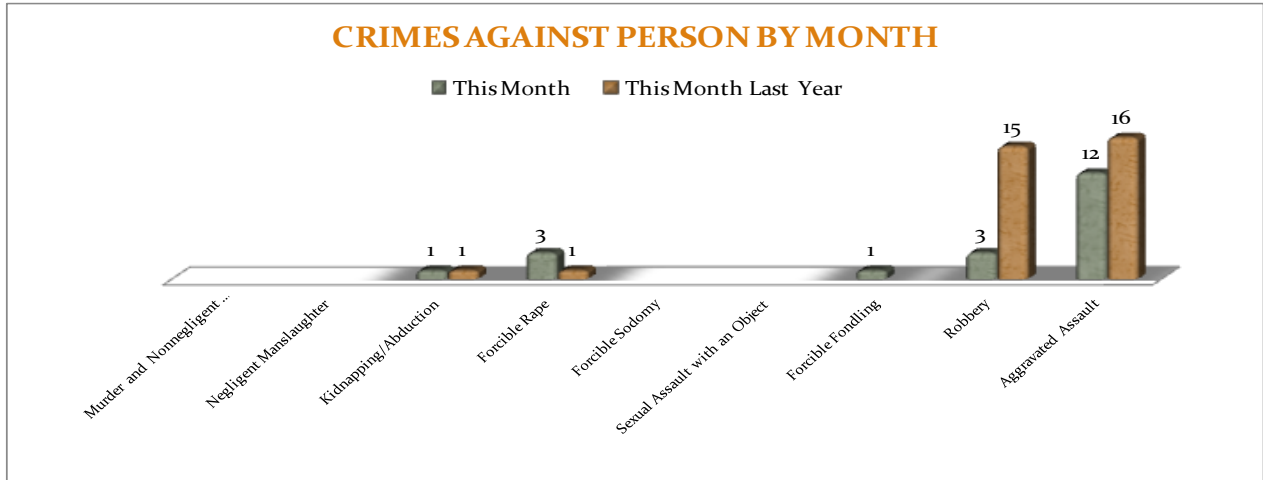
## CRIMES AGAINST PERSONS

There are 9 crimes that make up this section. There were a total of 20 offenses in this area in December this year, -39%, comparing to December of the last year. Robberies are

down -80%. As demonstrated on the bar chart below, there are no other significant changes in frequencies for the crimes in this category.

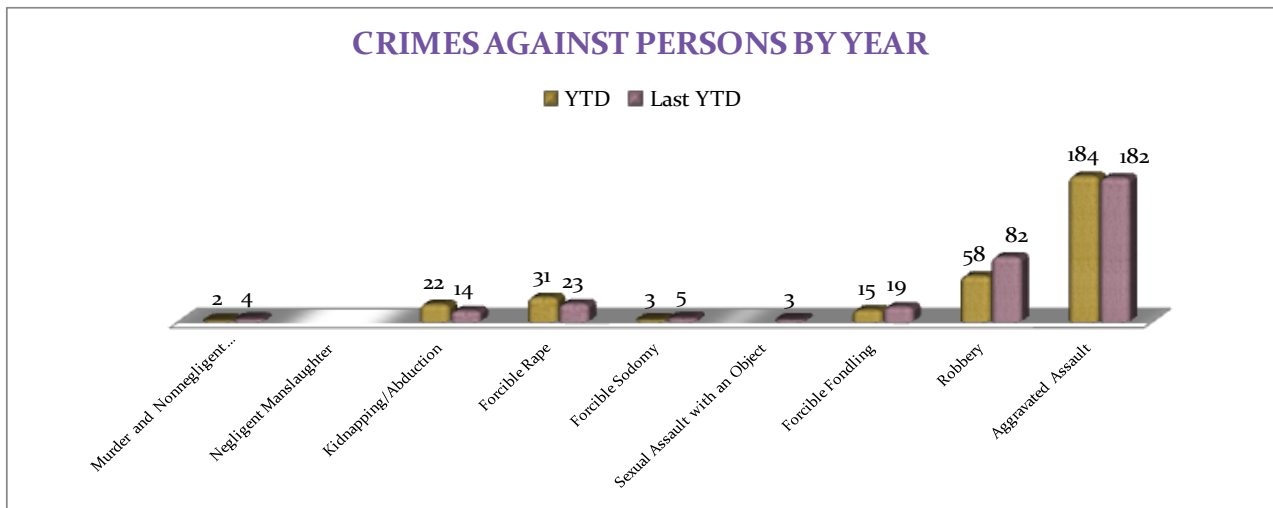
## MONTHLY REPORT December 2013

January 3, 2014



A bar graph below shows the year to date data for Crimes against Persons, which amounts to a total of 315 incidents for this category of crimes, which is down -5%,

comparing to the year to date data of last year. Robberies are down -29%. There are no other significant changes in frequencies for the crimes in this category.



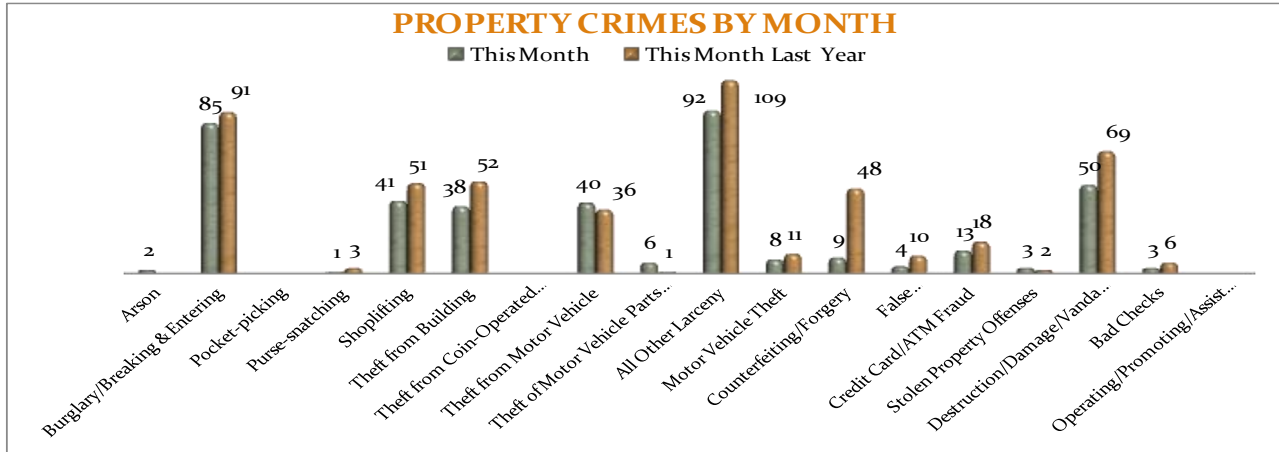
## PROPERTY CRIMES

This section displays the criminal activity for 18 crimes, all against property. This month, there were a total of 395 Property Crimes, a 22% decrease, comparing to December of the last year. The data indicates change in Counterfeiting / Forgery, down -81%,

Burglary/Breaking & Entering is down -7%, Theft from Building is down 27%, Destruction/Damage/Vandalism is down -28%, All Other Larceny is down 16%, and there were 9 less Motor Vehicle Thefts, while compared to December of last year.

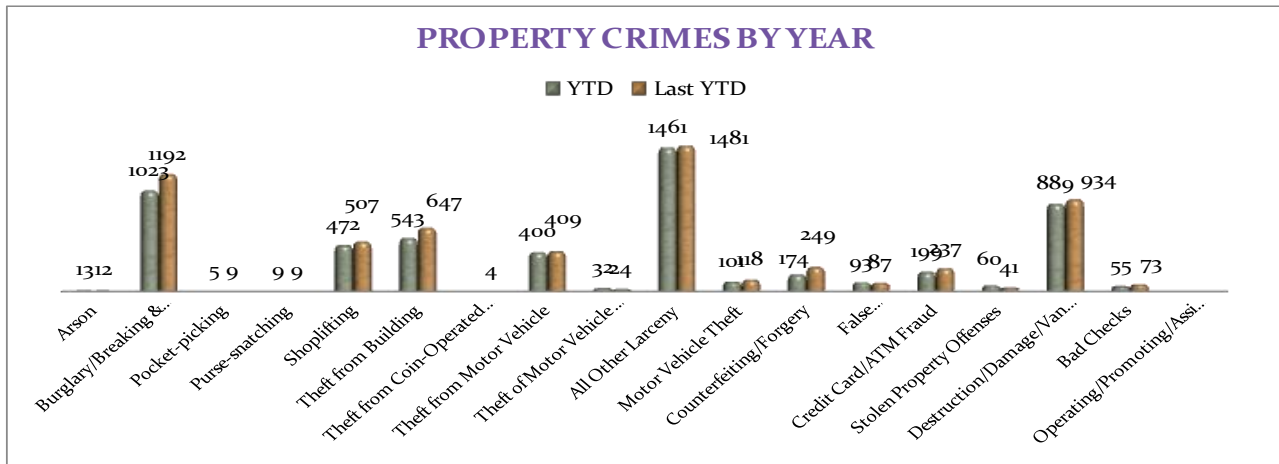
# MONTHLY REPORT December 2013

January 3, 2014



To date this year, 5,529 property offenses have occurred, a -22% decrease, comparing to the last year's data at this same time. The following significant changes are noted this year: Credit Card/ATM Fraud is down -16%; Burglary/Breaking & Entering is down -14%; Theft from Building is down -16%,

Counterfeiting/Forgery is down -30%, Destruction/Damage/Vandalism is down -5%, and Motor Vehicle Theft is down -14%. There are no other statistically significant changes noted for other offenses in this category.



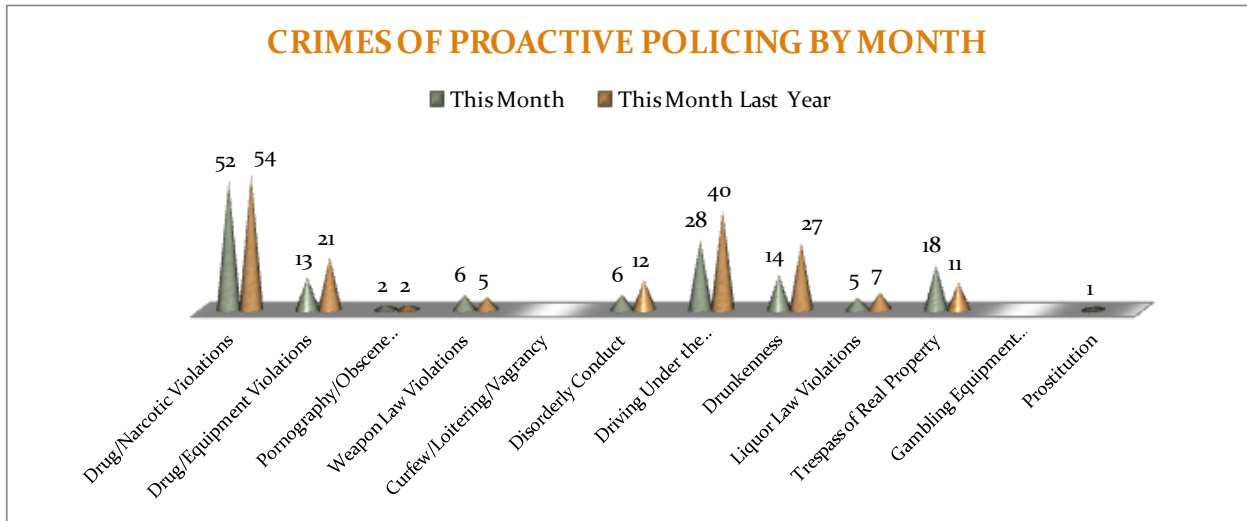
## CRIMES OF PROACTIVE POLICING

Crimes of Proactive Policing are those crimes that result from police officers actively policing the streets to combat certain types of street crime. As chart below indicates, twelve crimes fall under this category. A total of 145 offenses have been reported this

month, down -19%, comparing to December of the last year. Driving Under the Influence is down -30%. There are no other significant changes noted for the offenses in this category.

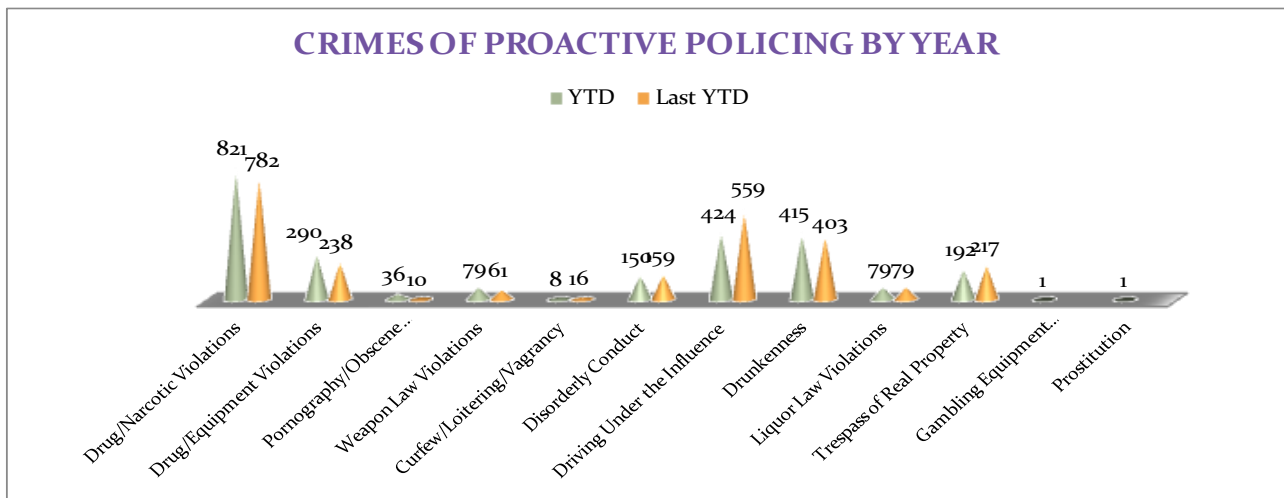
# MONTHLY REPORT December 2013

January 3, 2014



To date for the year 2013, there have been 2,496 crimes of proactive policing reported, down -1%, when comparing to the last year's to date data. As for individual offenses, however, the following changes are noted: Drug/Narcotic Violations are up 5%, Drug/Equipment Violations are up 22%, and

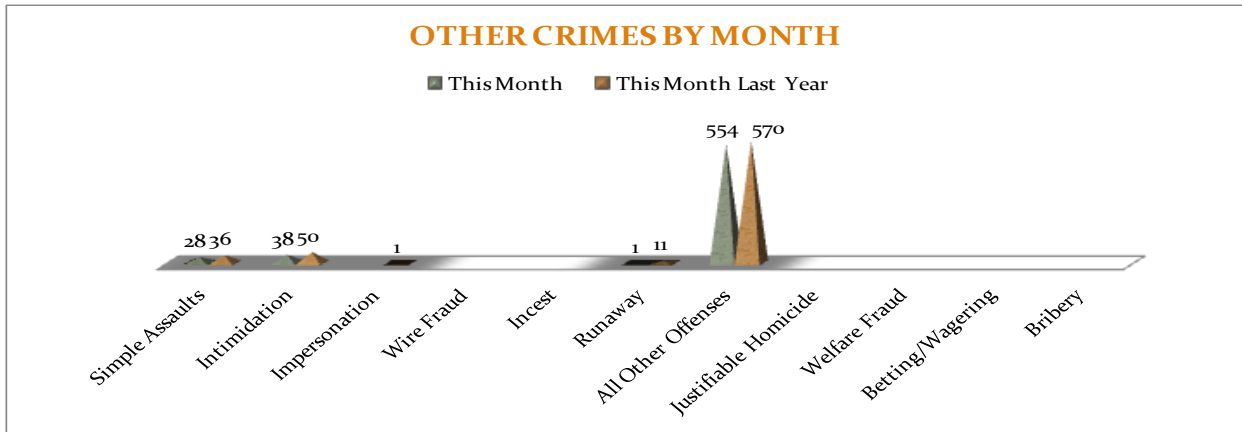
Drunkenness is up 3%, while Driving Under the Influence is down -24%. Pornography /Obscene Material offenses are up 260% (26 more offenses). There are no other significant changes noted for other offenses in this category.



**OTHER CRIMES**

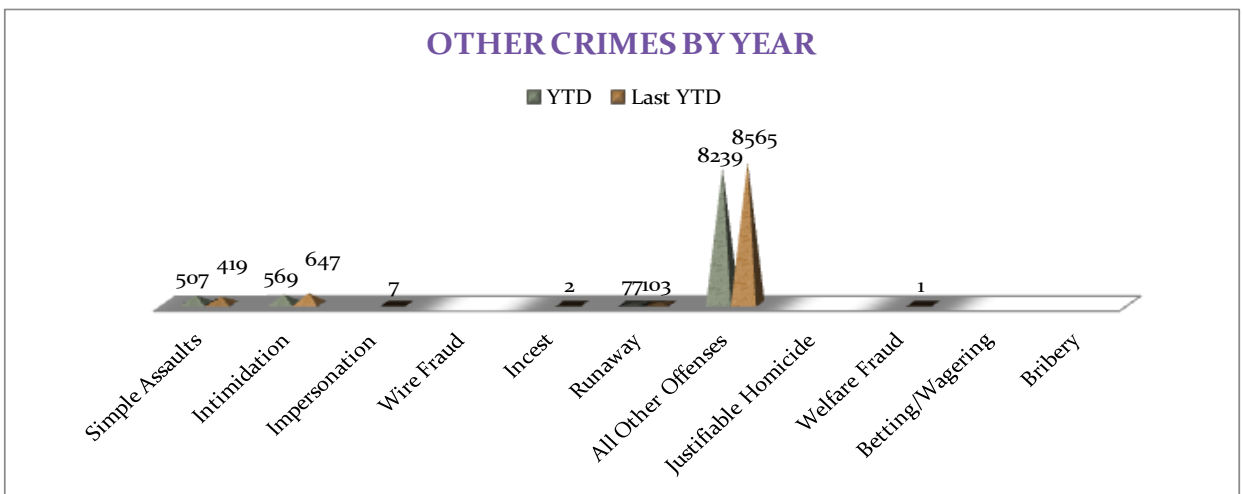
There are 11 crimes that fall into the Other Crimes category. This month, there have been a total of 621 Other Crimes reported, a 7% decrease, comparing to December of the last year. All Other Offenses decreased by -

3%, Runaways dropped by - 91%, and Intimidation is down -24%. No other significant changes are noted in this category of crimes this month.



To date this year, there have been 9,392 Other Crimes offenses reported, a -4% decrease comparing to the last year's to date data. Simple Assaults increased by 21%, but Intimidation is down -12% and there were -

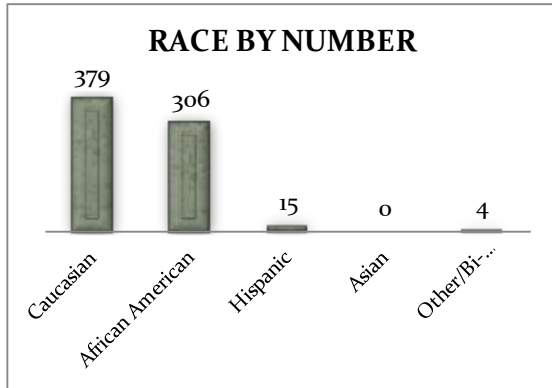
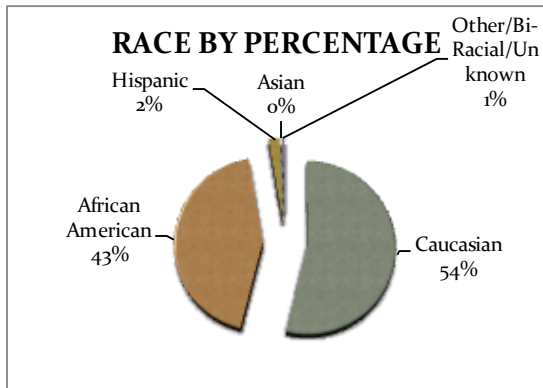
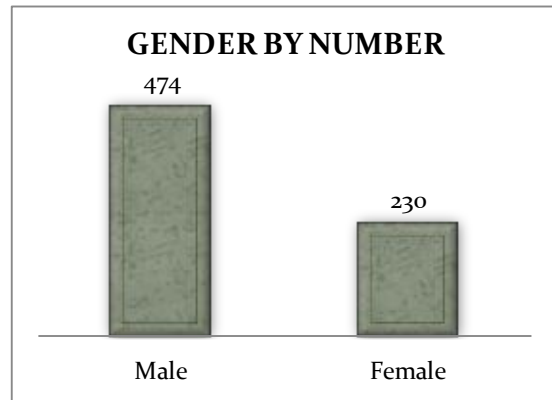
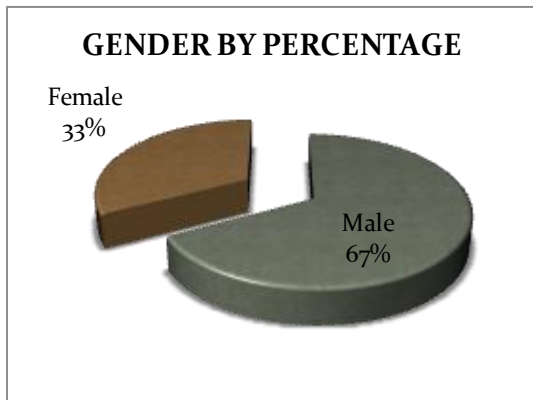
25% Runaways reported. All Other Offenses decreased by -4%. No other significant changes have been observed for other offenses within this category, comparing to the last year's data.



**ARREST DEMOGRAPHICS**

In December 2013, there were a total of 704 arrests carried out by the Jonesboro Police Department, up 1%, comparing with the last year's data for the month of December. The rate of arrests per offense increased 18% this month, comparing to the rate from the previous year. This section breaks down this month's arrests by race and gender. The

majority of arrestees, 67%, have been male ( $n = 474$ ), as opposed to 33% of female arrestees ( $n = 230$ ). As for the racial/ethnic composition, the majority of arrestees have been Caucasian (54%) and African American (43%), as opposed to Hispanic (2%), Asian (0%), or other/unknown/bi-racial (1%).



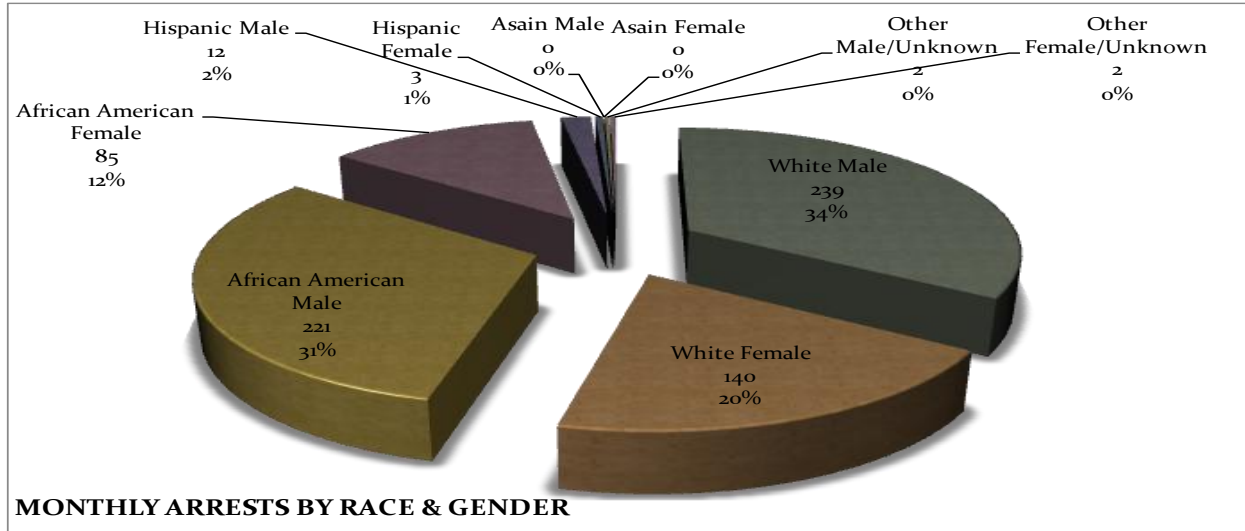
Caucasian males make up the majority, 34%, of arrestees this month ( $n = 239$ ). African American males make up 31% of arrestees for the month of December ( $n = 221$ ). Caucasian females make up 20% ( $n = 140$ ) and African American females make up 12% ( $n = 85$ ) of

arrestees this month. Hispanic males make up 2% ( $n = 12$ ), while Hispanic Females make up 1% of arestees this month ( $n = 3$ ). There were 2 Males and 2 Females of unknown race or ethnicity arested in December.



# MONTHLY REPORT December 2013

January 3, 2014



## EMERGENCY 911

Also known as Public Safety Answering Point (PSAP), the Emergency 911 Division is responsible for answering all calls from public for emergency assistance, accessing the needed information to best assist, and then assigning the most efficient and effective emergency response. In addition,

this division is responsible for setting priority call dispatching to field units including Police, Fire, and EMS. Emergency 911 also maintains all records for radio logs, calls for service, and other emergency service data collections.

Calls by Type	This Month	This Month Last Year	YTD	Last YTD	Change By Month	Change YTD
Land Line E911	890	793	9,573	9,358	12%	2%
Cell Phone E911	4,428	4,207	52,468	49,838	5%	5%
Admin Lines-non emer	14,407	14,780	173,869	196,979	-3%	-12%
<b>TOTALS</b>	<b>19,725</b>	<b>19,780</b>	<b>235,910</b>	<b>256,175</b>	<b>0%</b>	<b>-8%</b>

Calls by Agency	This Month	This Month Last Year	YTD	Last YTD	Change By Month	Change YTD
Jonesboro PD Calls	6,262	6,485	81,900	82,870	-3%	-1%
Craighead Cty Sheriff	1,212	1,202	15,793	14,985	1%	5%
Jonesboro Fire Dpt - dispatch	206	216	2,371	2,631	-5%	-10%
Jonesboro Fire Dpt - Med Asst	172	144	1,714	1,484	19%	15%
Craighead Cty - Fire	34	36	494	746	-6%	-34%
Craighead Cty - 1st Responder	113	124	1,166	1,230	-9%	-5%
Emerson Ambulance	309	309	3,463	3,656	0%	-5%
Medic One	333	320	3,813	3,579	4%	7%
Air Evac	0	0	5	9	N/C	-44%
Coroner	3	8	39	42	-63%	-7%
ARK State Police	13	10	123	155	30%	-21%
Jonesboro Animal Control	4	1	48	23	300%	109%
Wreckers Called	200	189	2,215	2,087	6%	6%
<b>TOTALS</b>	<b>8,861</b>	<b>9,044</b>	<b>113,144</b>	<b>113,497</b>	<b>-2%</b>	<b>0%</b>

## MONTHLY REPORT December 2013

7 January 2014

Calls by Municipality	This Month	This Month Last Year	YTD	Last YTD	Change By Month	Change YTD
Bay PD	67	104	1417	1468	-36%	-3%
Bono PD	258	267	3255	3266	-3%	0%
Brookland PD	122	156	1799	2002	-22%	-10%
Caraway PD	67	51	860	1408	31%	-39%
Cash PD	119	20	1043	235	495%	344%
Egypt PD	8	1	160	76	700%	111%
Lake City PD	91	98	1512	1588	-7%	-5%
Monette PD	140	159	1628	1915	-12%	-15%
<b>TOTALS</b>	<b>872</b>	<b>856</b>	<b>11,674</b>	<b>11,958</b>	<b>2%</b>	<b>-2%</b>

### UNIFORM PATROL DIVISION

The UPD is responsible for responding to calls into the Emergency – 911 Division by civilians and are normally the first responders. Jonesboro is divided into 6 patrol districts. Officers from UPD are

assigned to a district and work the same district every shift. In addition, when a Traffic Officer is not available, a UPD Officer will respond to traffic accidents and assist in directing traffic when necessary.

Incidents	This Month	This Month Last Year	YTD	Last YTD	Change By Month	Change YTD
Patrol Activities	4,497	6,485	89,224	83,502	-31%	7%
Complaints / Calls	4,603	3,889	55,727	48,416	18%	15%
Assists	670	954	13,527	14,132	-30%	-4%
Incident Reports	693	770	12,260	10,188	-10%	20%
Street Accidents	73	99	973	1,003	-26%	-3%
Private Property Accidents	32	50	483	492	-36%	-2%
Traffic Stops	1,570	1,343	27,133	23,443	17%	16%
Traffic Citations	340	435	7,785	7,546	-22%	3%
Written Warnings	638	521	11,226	10,148	22%	11%
DWI	23	32	452	458	-28%	-1%
Mis. Arrests	379	350	5,850	5,356	8%	9%
Felony Arrests	78	77	1,232	1,075	1%	15%
Warrants Served	902	773	15,366	15,144	17%	1%
Alarms	390	420	4,541	4,259	-7%	7%
<b>TOTALS</b>	<b>14,888</b>	<b>16,198</b>	<b>245,779</b>	<b>225,162</b>	<b>-8%</b>	<b>9%</b>
Hours Worked	8,166	6,717	109,676	105,675	22%	4%

### PROWL

The Prowl unit is a uniformed street crimes unit specializing in criminal patrol, narcotics enforcement, gang investigation, and prostitution activity. The unit conducts directed patrols, investigates citizen

complaints of street-level criminal activity, and directly assists the 2<sup>nd</sup> Judicial Drug Task Force. PROWL also assists any division within the Jonesboro Police Department at any time when needed.

# MONTHLY REPORT December 2013

January 3, 2014

Incidents	This Month	This Month Last Year	YTD	Last YTD	Change By Month	Change YTD
Street Accidents	0	0	0	0	N/C	N/C
Private Property Accidents	0	0	2	1	N/C	100%
Traffic Citations	9	17	269	353	-47%	-24%
DWI	0	0	0	1	N/C	-100%
Mis. Arrests	109	104	1,345	2,277	5%	-41%
Felony Arrests	15	11	306	335	36%	-9%
Drug Arrests	20	18	311	320	11%	-3%
Public Intoxication Arrests	0	0	0	1	N/C	-100%
Calls For Service	63	94	853	1,212	-33%	-30%
Alarms	0	0	0	0	N/C	N/C
Parking Citations	0	0	0	0	N/C	N/C
Written Warnings	36	46	758	662	-22%	15%
Assists	0	0	0	0	N/C	N/C
<b>TOTALS</b>	<b>252</b>	<b>290</b>	<b>3,844</b>	<b>5,162</b>	<b>-13%</b>	<b>-26%</b>
Value of Drugs Seized	\$ 24,500.00	\$ 1,150.00	\$ 126,230.00	\$ 201,985.00	2030%	-38%
Value of Asstes Seized	\$ 250.00	\$ -	\$ 41,294.00	\$ 34,218.00	N/C	21%
Patrol Miles	5,400	5,050	86,800	72,400	7%	20%

## CRIMINAL INVESTIGATIVE DIVISION

The CID is responsible for conducting follow-up investigations into criminal acts reported to the Jonesboro Police Department. The primary goal is to collect and present evidence that conclusively leads

to a successful arrest. Additionally, CID is charged with clearing additional crimes, recovering stolen property, preventing additional crimes, and gathering intelligence information.

Investigations	This Month	This Month Last Year	YTD	Last YTD	Change By Month	Change YTD
Criminal Investigations Assigned	113	94	1472	849	20%	73%
Criminal Investigations Closed	80	49	1017	649	63%	57%
Cleared by Arrests	50	36	618	454	39%	36%
Unfounded	10	5	125	75	100%	67%
Exceptionally Cleared	11	4	155	51	175%	204%
Filed With Prosecutors Office	7	1	81	50	600%	62%
Crimes Against Persons	This Month	This Month Last Year	YTD	Last YTD	Change By Month	Change YTD
Criminal Investigations Closed	20	18	316	210	11%	50%
Cleared by Arrests	15	13	205	161	15%	27%
Unfounded	1	4	45	21	-75%	114%
Exceptionally Cleared	3	1	44	12	200%	267%
Filed With Prosecutors Office	1	0	22	16	N/C	38%
Property Crimes	This Month	This Month Last Year	YTD	Last YTD	Change By Month	Change YTD
Criminal Investigations Assigned	75	67	960	588	12%	63%
Criminal Investigations Closed	50	28	578	390	79%	48%
Unfounded	7	1	64	45	600%	42%
Exceptionally Cleared	7	3	100	37	133%	170%
Filed With Prosecutors Office	5	1	37	25	400%	48%
Crimes Against Children	This Month	This Month Last Year	YTD	Last YTD	Change By Month	Change YTD
Criminal Investigations Assigned	7	1	114	23	600%	396%
Criminal Investigations Closed	8	0	85	33	N/C	158%
Cleared by Arrests	4	0	36	12	N/C	200%
Unfounded	2	0	17	9	N/C	89%

# MONTHLY REPORT December 2013

7 January 2014

Filed With Prosecutors Office	1	0	22	10	N/C	120%
Miscellaneous Investigations Assigned	2	2	31	12	0%	158%
Miscellaneous Investigations Cleared	2	3	2	25	-33%	-92%
<b>FINGERPRINTS</b>	<b>This Month</b>	<b>This Month Last Year</b>	<b>YTD</b>	<b>Last YTD</b>	<b>Change By Month</b>	<b>Change YTD</b>
<b>Rolled for the Public</b>	73	84	1931	1283	-13%	51%

## WARRANTS

The Warrants Division is responsible for serving warrants, criminal summonses, and subpoenas that are issued by the District Court. On city court days, the Warrants Division provides a bailiff for court and a transport officer. In addition, this Division is

responsible for transporting wanted persons arrested in other jurisdictions back to Jonesboro. The STEP program operates within this division and is a grant-funded operation in which officers can get paid overtime to enforce the safety belt law.

Arrests	This Month	This Month Last Year	YTD	Last YTD	Change By Month	Change YTD
Misdemeanor	0	532	4845	12508	-100%	-61%
Felony	0	0	6	4	N/C	50%
<b>Total Arrests</b>	<b>0</b>	<b>532</b>	<b>4851</b>	<b>12512</b>	<b>-100%</b>	<b>-61%</b>

Warrants by Activity	This Month	This Month Last Year	YTD	Last YTD	Change By Month	Change YTD
Subpoenas	387	274	6183	5528	41%	12%
Commitments	7	2	66	23	250%	187%
Traffic Citations	4	0	17	21	N/C	-19%
Complaints	0	1	43	13	-100%	231%
Assist	0	0	3	2	N/C	50%
Alarms	0	0	0	1	N/C	-100%

Hours by Activity	This Month	This Month Last Year	YTD	Last YTD	Change By Month	Change YTD
SI Criminal	128.5	104.25	2113.15	2693.75	23%	-22%
Court	112.5	81	1261.67	1467.67	39%	-14%
Prisoner Transport	54.5	14	482.17	321	289%	50%

Hours Worked	This Month	This Month Last Year	YTD	Last YTD	Change By Month	Change YTD
Regular Hours Worked	582	414	6665.5	9188	41%	-27%
Overtime Hours Worked	7	1	84.3	63	600%	34%
<b>TOTAL Hours Worked</b>	<b>589</b>	<b>415</b>	<b>6749.8</b>	<b>9251</b>	<b>42%</b>	<b>-27%</b>

Mileage	This Month	This Month Last Year	YTD	Last YTD	Change By Month	Change YTD
<b>Total Mileage</b>	<b>3356</b>	<b>1710</b>	<b>37895</b>	<b>27525</b>	<b>96%</b>	<b>38%</b>

STEP	This Month	This Month Last Year	YTD	Last YTD	Change By Month	Change YTD
DWI Arrest	2	1	2	9	100%	-78%
DUI Arrest	0	0	0	0	N/C	N/C
Traffic Citations	35	88	160	2048	-60%	-92%
Felony Arrests	0	0	1	7	N/C	-86%
Drug Arrests	0	0	0	2	N/C	-100%
<b>STEP TOTALS</b>	<b>37</b>	<b>89</b>	<b>163</b>	<b>2066</b>	<b>-58%</b>	<b>-92%</b>
<b>STEP Hours Worked</b>	<b>110</b>	<b>49</b>	<b>245</b>	<b>1229.5</b>	<b>124%</b>	<b>-80%</b>
<b>STEP Miles Driven</b>	<b>324</b>	<b>230</b>	<b>1100</b>	<b>6723.5</b>	<b>41%</b>	<b>-84%</b>

**MONTHLY REPORT December 2013**

**7 January 2014**

**DRUG TASK FORCE**

The DTF is responsible for investigating major drug traffickers in the area, including all types of illegal drugs.

The DTF works closely with local, state, and federal agencies to eradicate drugs from the community.

INVESTIGATIONS	This Month	This Month Last Year	YTD	Last YTD	Change By Month	Change YTD
Opened	22	11	249	285	100%	-13%
Closed	18	11	181	221	64%	-18%
<b>TOTAL</b>	<b>40</b>	<b>22</b>	<b>430</b>	<b>506</b>	<b>82%</b>	<b>-15%</b>
With Nexus to Jonesboro	This Month	This Month Last Year	YTD	Last YTD	Change By Month	Change YTD
Opened	22	11	210	254	100%	-17%
Closed	0	0	0	0	N/C	N/C
<b>TOTAL</b>	<b>22</b>	<b>11</b>	<b>210</b>	<b>254</b>	<b>100%</b>	<b>-17%</b>
Outside Jonesboro (No Known Nexus)	This Month	This Month Last Year	YTD	Last YTD	Change By Month	Change YTD
Opened	0	0	6	12	1300%	-50%
Closed	0	0	0	0	0%	N/C
<b>TOTAL</b>	<b>0</b>	<b>0</b>	<b>6</b>	<b>12</b>	<b>N/C</b>	<b>-50%</b>
ASSISTANCE RENDERED	This Month	This Month Last Year	YTD	Last YTD	Change By Month	Change YTD
Assist to Outside Agencies	2	2	3	66	0%	-95%
Assist to Jonesboro UPD/CID	5	2	87	120	150%	-28%
ARRESTS	This Month	This Month Last Year	YTD	Last YTD	Change By Month	Change YTD
Miscellaneous	13	5	88	70	160%	26%
Felony	29	11	317	323	164%	-2%
Marijuana	5	1	65	46	400%	41%
Cocaine	2	1	13	17	100%	-24%
Crack Cocaine	3	0	12	26	N/C	-54%
Methamphetamine/ICE	11	4	118	99	175%	19%
LSD	0	0	0	0	N/C	N/C
Extasy (MDMA or Other Designer Drug)	0	0	3	0	N/C	N/C
Prescription	3	1	40	27	200%	48%
Opiates (Heroin, Opium)	0	0	0	2	N/C	-100%
Labs	1	0	5	8	N/C	-38%
All Other Drug Offenses	7	3	92	49	133%	88%
ASSET FORFEITURE	This Month	This Month Last Year	YTD	Last YTD	Change By Month	Change YTD
Vehicles Seized (No.)	0	0	2	5	N/C	-60%
Value of Assets Seized (Includes Value of vehicles)	\$ -	\$ -	\$ 14,941.00	\$ 123,211.00	N/C	-88%
Asset Value Awarded to Jonesboro PD (State)	\$ -	\$ -	\$ -	\$ -	N/C	N/C
Asset Value Awarded to Jonesboro PD (Federal)	\$ -	\$ -	\$ -	\$ -	N/C	N/C
Asset Value Awarded to Jonesboro PD (Total)	\$ -	\$ -	\$ -	\$ -	N/C	N/C
ARRESTS DEMOGRAPHICS	This Month	This Month Last Year	YTD	Last YTD	Change By Month	Change YTD
White	11	9	156	147	22%	6%
African American	10	3	74	91	233%	-19%
Latino	0	0	5	47	N/C	-89%
Asian	0	0	0	0	N/C	N/C
Other/Bi-Racial	0	0	0	0	N/C	N/C
Male	15	7	158	200	114%	-21%
Female	6	2	68	69	200%	-1%
White Male	6	7	94	93	-14%	1%
White Female	5	2	56	52	150%	8%
African American Male	9	3	63	79	200%	-20%
African American Female	1	0	11	12	N/C	-8%
Latino Male	0	0	4	33	N/C	-88%
Latino Female	0	0	0	3	N/C	-100%
Asian Male	0	0	0	0	N/C	N/C
Asian Female	0	0	0	0	N/C	N/C
Other/Bi-Racial Male	0	0	0	0	N/C	N/C
Other/Bi-Racial Female	0	0	0	0	N/C	N/C

**MONTHLY REPORT December 2013**

**7 January 2014**

**TRAFFIC**

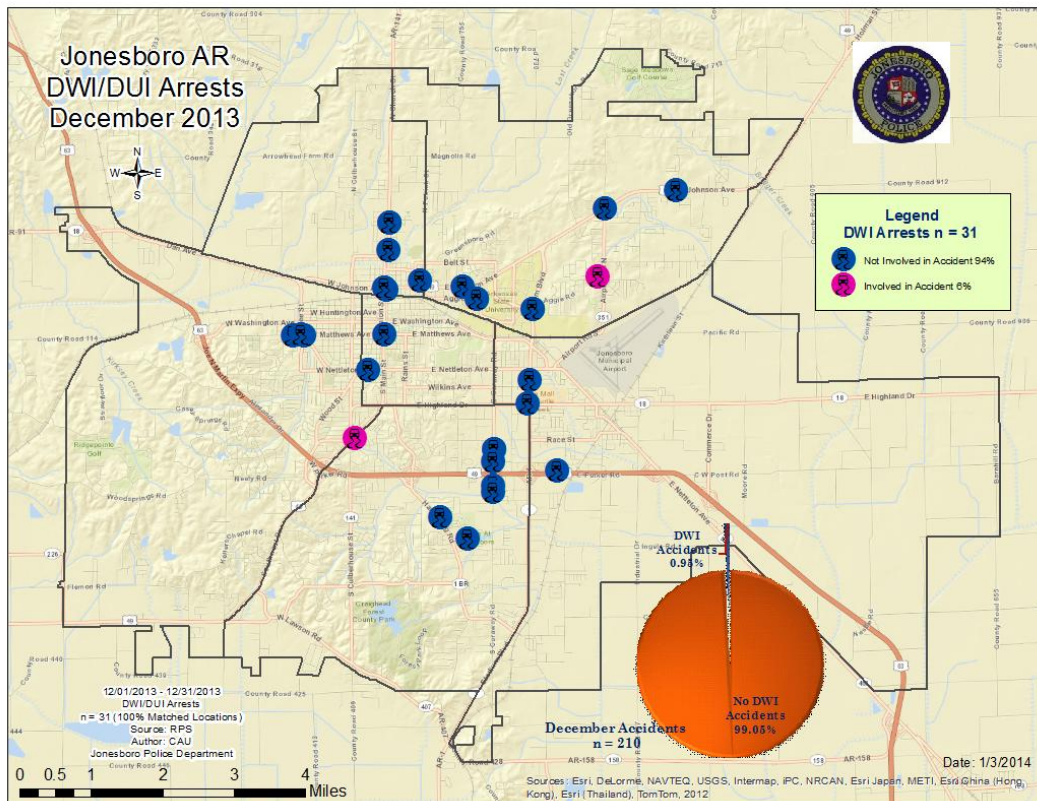
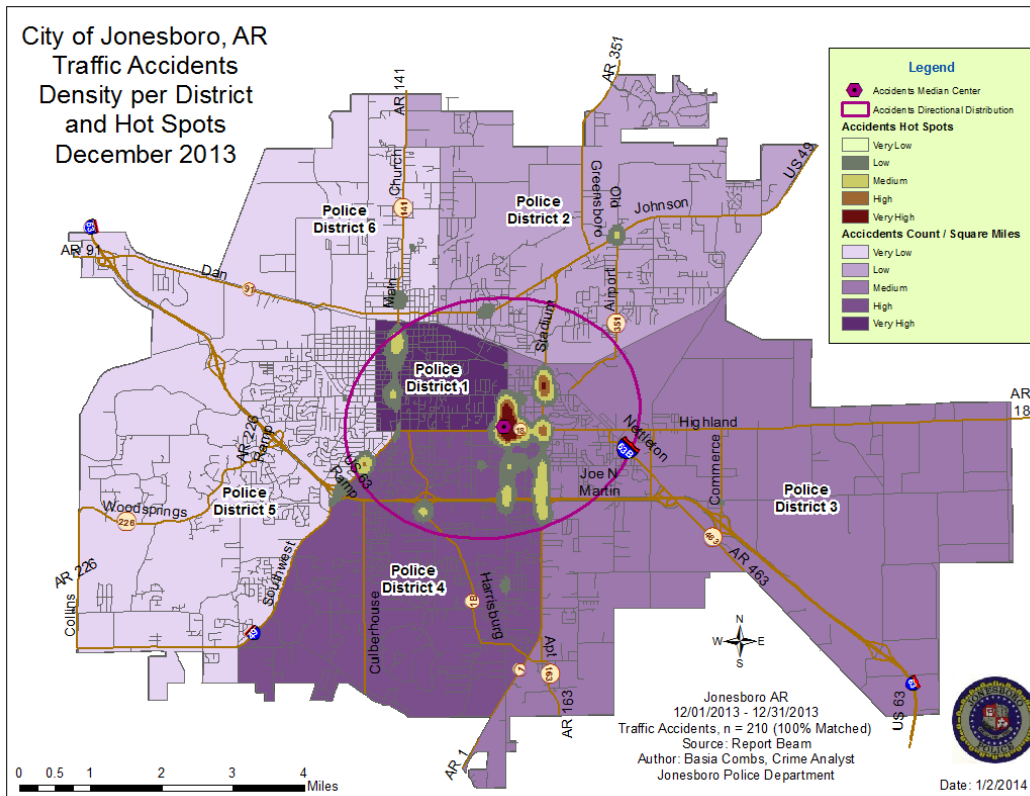
Comprised of three motor units and three Chargers, the Traffic Enforcement Unit responds to traffic accidents and provides increased enforcement in particularly challenging areas. This unit also provides

extra coverage for specific congestion problems and special events in the community. Last, they work details targeting specific issues, such as DWI enforcement and traffic safety checkpoints.

<b>Incidents</b>	<b>This Month</b>	<b>This Month Last Year</b>	<b>YTD</b>	<b>Last YTD</b>	<b>Change By Month</b>	<b>Change YTD</b>
Street Accidents	142	109	1684	1634	30%	3%
Private Property Accidents	51	20	514	483	155%	6%
Traffic Citations	56	51	1181	2068	10%	-43%
DWI	2	1	17	39	100%	-56%
Mis. Arrests	15	15	75	171	0%	-56%
Felony Arrests	1	2	8	18	-50%	-56%
Drug Arrests	0	0	0	0	N/C	N/C
Public Intoxication Arrests	0	0	0	2	N/C	-100%
Calls For Service	201	157	2767	3309	28%	-16%
Alarms	0	0	0	14	N/C	-100%
Parking Citations	0	0	0	0	N/C	N/C
Written Warnings	72	22	1966	791	227%	149%
<b>TOTALS</b>	<b>540</b>	<b>377</b>	<b>8212</b>	<b>8529</b>	<b>43%</b>	<b>-4%</b>
Value of Asstes Seized	\$ -	\$ -	\$ -	\$ -	N/C	N/C
Patrol Miles	4,441	2,999	56,741	58,363	48%	-3%
Hours Worked	741	502	9962	9370.5	48%	6%

# MONTHLY REPORT December 2013

7 January 2014



## MONTHLY REPORT December 2013

7 January 2014

### ANIMAL CONTROL

The Animal Control Division is responsible for educating the public on safe and humane issues regarding animal treatment, enforcing all animal laws and ordinances, assisting the

public in resolving animal issues, and protecting the safety and welfare of the citizens and animals in this community.

Incident/Service	This Month	This Month Last Year	YTD	Last YTD	Change By Month	Change YTD
Barking Complaints	4	8	96	96	-50%	0%
Bite Reports	4	2	55	79	100%	-30%
Door Hangers	36	46	586	800	-22%	-27%
Welfare Checks	34	59	676	880	-42%	-23%
Advised of Rights	907	679	10789	10891	34%	-1%
Incident Reports	2	6	29	53	-67%	-45%
Gone on Arrival	30	46	515	705	-35%	-27%
Complaints	501	641	8184	8781	-22%	-7%
Desk Complaints	1519	1001	18188	16991	52%	7%
Captured Dogs	153	104	1805	1517	47%	10%
Captured Cats	5	4	225	132	25%	70%
Captured Wildlife	7	5	454	386	40%	18%
Chemical Captures	3	0	14	28	N/C	-50%
Traps	15	10	450	417	50%	8%
Deceased Animals	36	64	608	890	-44%	-32%
Assist J.P.D.	8	4	71	62	100%	15%
Assist C.S.O.	5	0	37	7	N/C	429%
Public Relations	290	259	4940	5831	12%	-15%
Incident/Service	This Month	This Month Last Year	YTD	Last YTD	Change By Month	Change YTD
CITATIONS ISSUED	31	24	488	466	29%	5%
WARNINGS ISSUED	117	100	1327	659	17%	101%
Physical Arrests	0	0	47	13	N/C	262%
City Warrants Served	4	0	74	45	N/C	64%
County Warrants Served	0	0	3	22	N/C	-86%
Felony Bench Warrants	0	0	3	2	N/C	50%
Euthanized	84	74	1206	918	14%	31%
Deceased Animals Landfill lbs.	3180	2500	43710	37816	27%	16%
Wildlife Euthanized	7	5	454	346	40%	31%
Sent to Rescue Centers	10	3	76	65	233%	17%
Adoptions	52	49	427	530	6%	-19%
Miles Driven	8,459	7676	109,249	87,110	10%	25%

### FLEET MAINTNANCE

The Fleet Maintenance is responsible for all of the police vehicle maintenance upkeep, cleanliness, and purchasing. In addition, this

Division handles most of the purchasing of equipment, supplies, and uniforms for all of the Police Department.



# MONTHLY REPORT December 2013

January 3, 2014

Repair Costs by Model Year	This Month	This Month Last Year	YTD	Last YTD	Change By Month	Change YTD
95-99	\$ -	\$ -	\$ -	\$ -	N/C	N/C
2000	\$ -	\$ -	\$ -	\$ 115.09	N/C	-100%
2001	\$ -	\$ -	\$ -	\$ 300.46	N/C	-100%
2002	\$ -	\$ -	\$ -	\$ -	N/C	N/C
2003	\$ -	\$ -	\$ 1,791.95	\$ -	N/C	N/C
2004	\$ -	\$ -	\$ 2,113.93	\$ 1,892.84	N/C	12%
2005	\$ 753.54	\$ -	\$ 1,010.55	\$ 1,000.39	N/C	1%
2006	\$ 269.97	\$ 1,480.39	\$ 31,227.47	\$ 44,628.63	-82%	-30%
2007	\$ 1,426.09	\$ 362.86	\$ 29,618.13	\$ 17,667.74	293%	68%
2008	\$ 185.73	\$ -	\$ 7,936.35	\$ 5,032.48	N/C	58%
2009	\$ 36.65	\$ 232.05	\$ 5,270.19	\$ 4,518.83	N/C	N/C
2010	\$ -	\$ -	\$ 442.57	\$ 992.18	N/C	N/C
2011	\$ 290.28	\$ -	\$ 2,661.92	\$ 2,456.92	N/C	N/C
2012	\$ 232.53	\$ -	\$ 418.87	\$ -	N/C	N/C
2013	\$ 11.66	n/a	\$ 591.79	n/a	N/C	N/C
<b>Totals</b>	<b>\$ 3,206.45</b>	<b>\$ 2,075.30</b>	<b>\$ 83,083.72</b>	<b>\$ 88,365.47</b>	<b>N/C</b>	<b>N/C</b>

Routine Preventative Maintenance by Model Year	This Month	This Month Last Year	YTD	Last YTD	Change By Month	Change YTD
95-99	\$ -	\$ -	\$ 174.13	\$ 488.54	N/C	-64%
2000	\$ -	\$ -	\$ 29.00	\$ 20.00	N/C	45%
2001	\$ -	\$ -	\$ 186.59	\$ -	N/C	N/C
2002	\$ -	\$ -	\$ 20.00	\$ 100.46	N/C	-80%
2003	\$ -	\$ -	\$ 367.59	\$ 489.50	N/C	-25%
2004	\$ 497.95	\$ 4.50	\$ 1,255.89	\$ 424.13	10966%	196%
2005	\$ 20.00	\$ -	\$ 1,698.82	\$ 1,197.24	N/C	42%
2006	\$ 1,169.14	\$ 797.99	\$ 13,132.34	\$ 17,659.63	47%	-26%
2007	\$ 423.00	\$ 724.84	\$ 12,853.89	\$ 10,597.63	-42%	21%
2008	\$ 386.63	\$ -	\$ 4,846.22	\$ 6,081.60	N/C	-20%
2009	\$ 76.00	\$ 1,417.07	\$ 7,113.36	\$ 9,715.21	N/C	N/C
2010	\$ -	\$ 20.00	\$ 1,847.49	\$ 4,092.82	N/C	N/C
2011	\$ 1,680.30	\$ 66.50	\$ 11,431.99	\$ 2,727.87	N/C	N/C
2012	\$ -	\$ 65.00	\$ 667.25	\$ 663.40	N/C	N/C
2013	\$ -	n/a	\$ 1,451.40	n/a	N/C	N/C
<b>Totals</b>	<b>\$ 4,253.02</b>	<b>\$ 3,095.90</b>	<b>\$ 57,075.96</b>	<b>\$ 54,258.03</b>	<b>N/C</b>	<b>N/C</b>

## RECORDS

The Records Division is responsible for providing administrative and clerical support to the department. Major responsibilities include entering the accident and incident reports and tickets into the records database management system, assisting the general

public for report requests, performing criminal backgrounds, serving as a switchboard at times, performing validations, and setting up and managing the payment plans out of court.

RECORDS	This Month	This Month Last Year	YTD	Last YTD	Change By Month	Change YTD
Incident/Arrest Reports Processed	1025	1109	14691	14776	-8%	-1%
Accident Reports Processed	210	235	2555	2586	-11%	-1%
Citations Processed	2731	2527	39165	46525	8%	-16%
Warnings Processed	561	703	9922	10048	-20%	-1%
Backgrounds	9	8	186	216	13%	-14%
Fingerprints	0	84	639	1324	-100%	-52%
Photos	0	0	12	8	N/C	50%
Accident Requests	91	101	1270	1412	-10%	-10%
Accident Requests Online	124	122	1,584	1,409	2%	12%

---

## MONTHLY REPORT December 2013

---

7 January 2014

### PROFESSIONAL STANDARDS

The Office of Professional Standards, a unit within Administration, is charged with the compilation and updating of an extensive set of policies and procedures and providing a general operations guideline and code of conduct for officers to follow. In the event

that a member of the public does experience a negative interaction with an officer, mechanisms are in place for them to lodge a complaint. All complaints are reviewed and investigations completed in a timely manner.

Professional Standards	This Month	This Month Last Year	YTD	Last YTD	Change By Month	Change YTD
Opened (TOTAL)	2	3	44	67	-33%	-34%
Closed	2	3	48	65	-33%	-26%
Inquiries	2	2	39	54	0%	-28%
Formal Investigations	0	1	10	8	-100%	25%
Sustained	2	2	27	49	0%	-45%
Not-Sustained	0	0	12	1	N/C	1100%
Exonerated	0	0	5	4	N/C	25%
Unfounded	0	1	6	13	-100%	-54%

---

END OF REPORT



---

#### Contact Information

Basia Combs, MPA, CCIA | Crime Analyst | Office of Crime Analysis & Criminal Intelligence  
Jonesboro Police Department | 410 W Washington Ave | Jonesboro, AR 72401  
Ph: 870-336-7196 | E-mail: [bcombs@jonesboro.org](mailto:bcombs@jonesboro.org) | [www.jonesboropolice.com](http://www.jonesboropolice.com)

---