

# JONESBORO POLICE DEPARTMENT

## Monthly Report

### June 2013

#### **IN THIS REPORT**

<b>CRIME ANALYSIS .....</b>	<b>1</b>
Total Crime .....	2
Crimes against Person .....	3
Property Crimes .....	4
Crimes of Proactive Policing	5
Other Crimes.....	6
Arrests Demographics .....	7
<b>EMERGENCY 911 .....</b>	<b>9</b>
<b>UPD .....</b>	<b>10</b>
<b>_PROWL .....</b>	<b>10</b>
<b>CID .....</b>	<b>11</b>
<b>WARRANTS .....</b>	<b>12</b>
<b>DRUG TASK FORCE ....</b>	<b>13</b>
<b>TRAFFIC .....</b>	<b>14</b>
Maps .....	15
<b>ANIMAL CONTROL .....</b>	<b>16</b>
<b>FLEET MAINTENANCE</b>	<b>16</b>
<b>RECORDS .....</b>	<b>17</b>
<b>PROFESSIONAL</b>	
<b>STANDARDS .....</b>	<b>18</b>

*The purpose of the Jonesboro Police Department Monthly Report is to compile data into one integrated report for review, allowing for a seamless flow of information for better decision-making. After each department collates their monthly numbers and sends it to the Office of Crime Analysis, it is organized into sections of departmental data, analyzed and packaged, and finally disseminated to department heads, the Chief of Police, the City Junear, and the City Council. Major sections include Crime Analysis, Emergency 911, Uniform Police Division, Prowl, Criminal Investigative Division, Warrants, Drug Task Force, Traffic, Parking Enforcement, Animal Control, Fleet Maintenance, Records, and Professional Standards.*

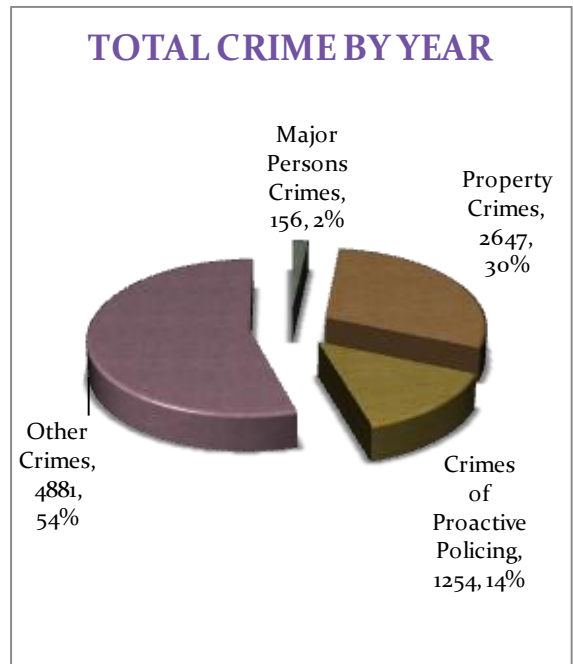
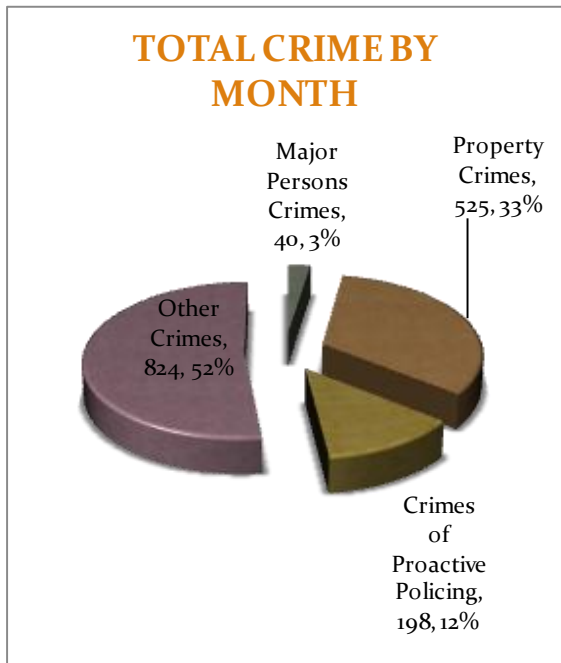
#### **CRIME ANALYSIS**

The Crime Analysis division consists of one Crime Analyst and one part-time Crime Analyst Assistant. The Crime Analyst position is responsible for the analysis and dissemination of crime activity data and the collection and maintenance of crime intelligence information for the city of Jonesboro. Additionally, the Crime Analyst is charged with providing the department with current and accurate crime maps, presenting crime activity data to audiences of interest, and with responding to requests for crime data from civilians and departmental staff. Data exported from this division is used by field agents for more effective, efficient policing, administration for improved staffing decisions, and the Junear's office for community decision making and enhanced public relations. The following section is broken down into Total Crime, Crimes against Persons, Property Crimes, Crimes of Proactive Policing, Other Crimes, Arrest Demographics, and Total Crime Monthly Comparison.

**TOTAL CRIME**

The crime activity for the month of June 2013 was at a total of 1,589 NIBRIS reportable offenses, a 3% decrease, comparing to the total of offenses reported in June of the last year. With Jonesboro population estimated to be equal to 69,856, the crime rate in June of this year was at 23 crimes per 1,000 population, comparing to 24 crimes per 1,000 population last year<sup>1</sup>, a 5% decrease. As indicated on a pie chart below, Other Crimes absorb the majority, 55%, of this month's crime activity (n = 870). Property Crimes fall into a second place and comprise of 29% of all the crimes (n = 471). Following in third and fourth places are, respectively, Crimes of Proactive Policing comprising of 14% (n = 219) of all the crimes, and Crimes against Persons, comprising of 2% (n = 29) of all the crimes this month.

Year to date data includes number of crimes from January through June 2013. A total of 7,311 NIBRIS reportable offenses were reported in 2013, a 9% decrease, comparing to the same period last year. The year to date crime rate amounts to 105 offenses per 1,000 population, compared to 117 offenses per 1,000 population last year (down 11%). To date this year, 55% of all the crimes is attributed to Other Crimes category (n = 4,049). Property Crimes amount to 29% of all the crimes (n = 2,090), Crimes of Proactive Policing comprise of 14% of all the crimes to date, where n = 1,056; Crimes against Persons comprise of 2% of a total year to date number of crimes (n = 116).

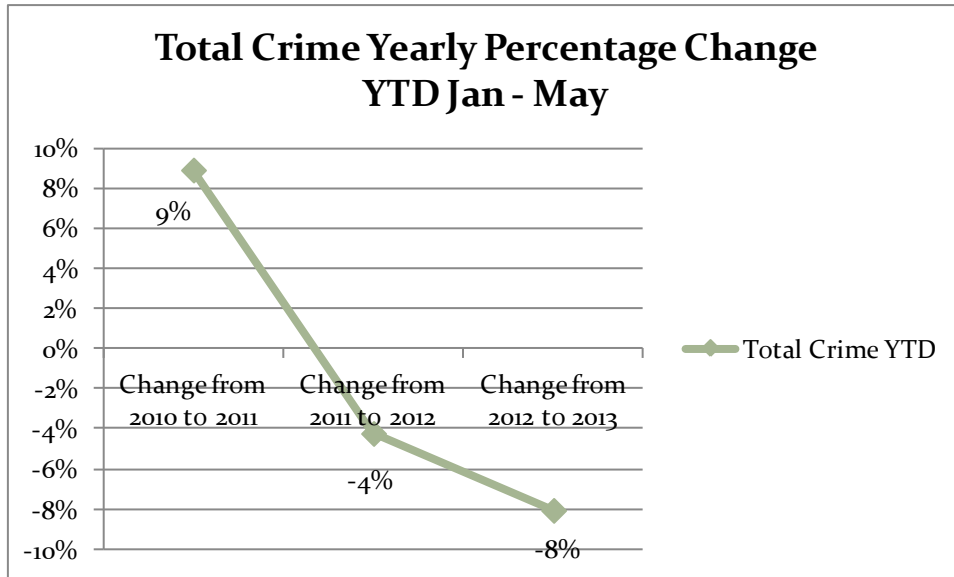
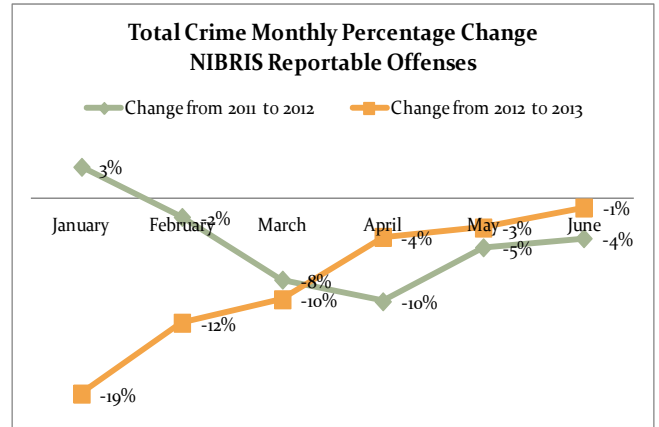
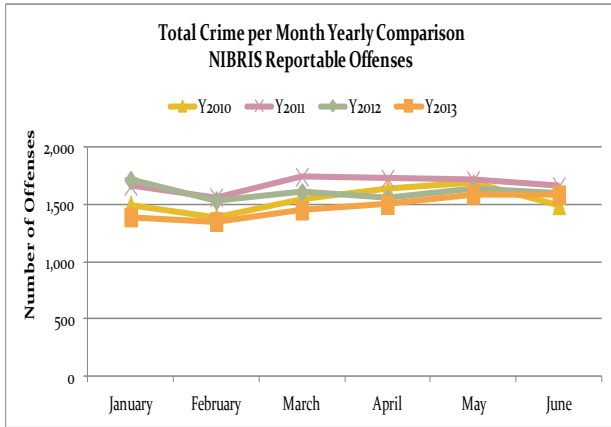


Line charts on the following page depict frequencies of crime and a monthly and yearly percentage change from the last year.

<sup>1</sup> Note: Population numbers are based on 2011 & 2012 population estimate, where 2011 population estimate is 68,547.

# MONTHLY REPORT JUNE 2013

22 July 2013



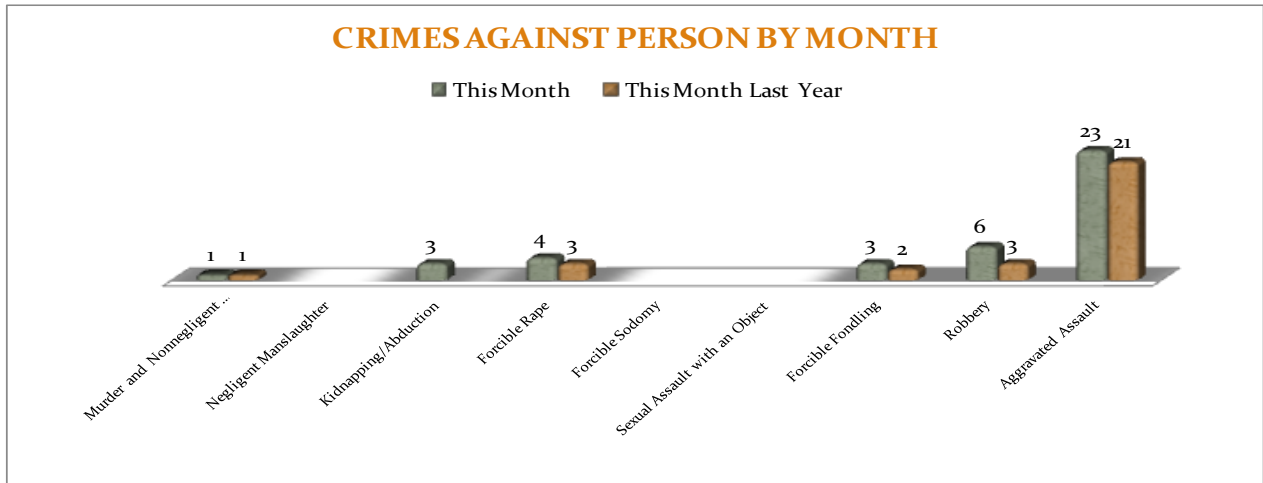
## CRIMES AGAINST PERSONS

There are 9 crimes that make up this section. There were a total of 40 offenses in this area in June this year, a 33% increase comparing to June of the last year. Robbery is up by 3

offenses, but kidnapping/Abduction is down 3 offenses. As demonstrated on the bar chart below, there are no significant changes in frequencies for the crimes in this category.

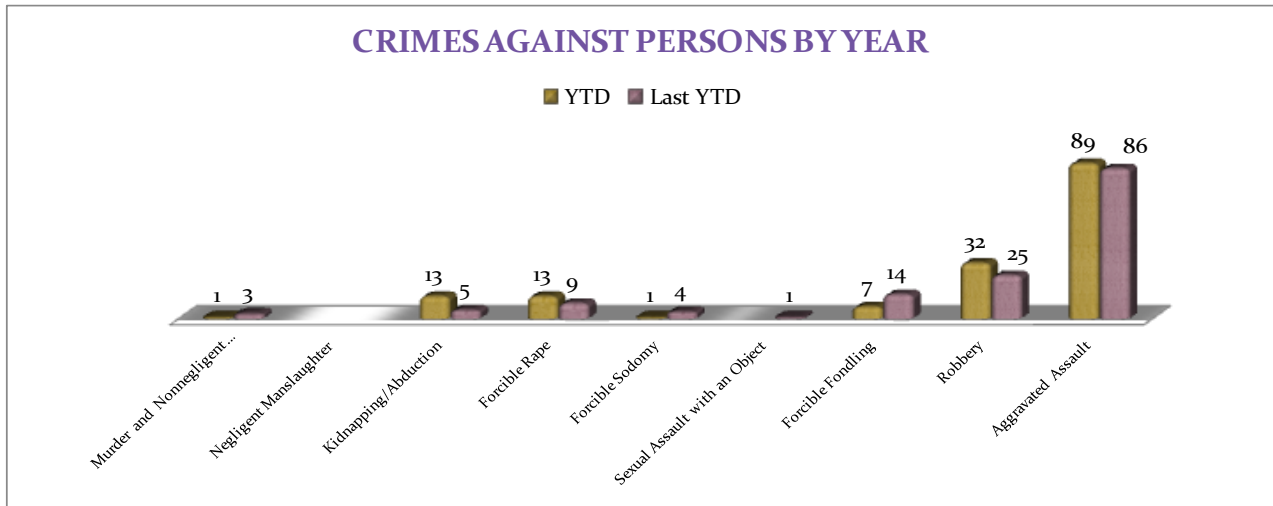
MONTHLY REPORT JUNE 2013

22 July 2013



A bar graph below shows the year to date data for Crimes against Persons, which amounts to a total of 156 incidents for this category of crimes, no change, comparing to the year to date data of last year. There was

a 67% decrease in Murder and Nonnegligent Manslaughter. Kidnapping/Abduction is up 8 offenses. There are no other significant changes in frequencies for the crimes in this category.



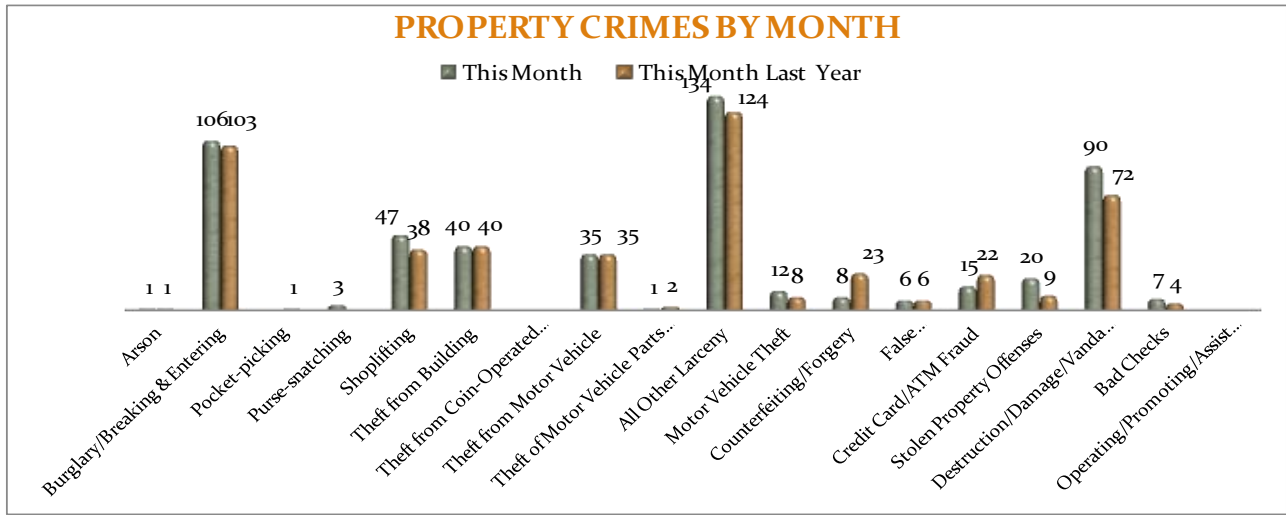
**PROPERTY CRIMES**

This section displays the criminal activity for 18 crimes, all against property. This month, there were a total of 525 Property Crimes, a 8% increase comparing to June of the last year. The data indicates a significant change

in Stolen Property Offenses (up 122%) and Destruction/Damage/Vandalism of Property is up 25%. No other significant changes are noted this month for this crime category.

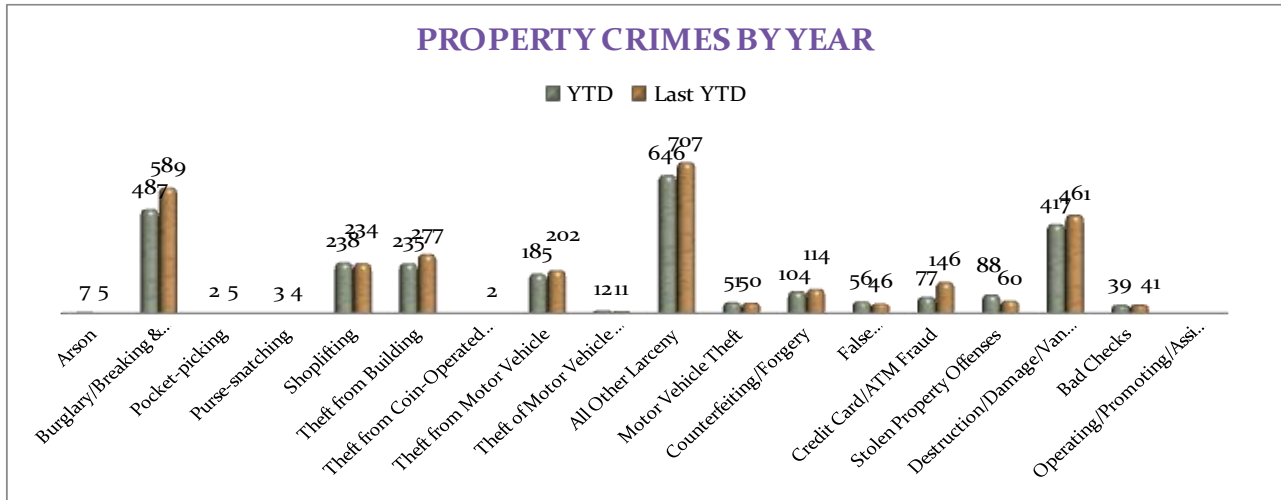
MONTHLY REPORT JUNE 2013

22 July 2013



To date this year, 2647 property offenses have occurred, a 10% decrease, comparing to the last year's data at this same time. The following significant changes are noted this year: Credit Card/ATM Fraud is down, -47%;

Burglary/Breaking & Entering is down, -23%, Theft from Building is down, -17%. Stolen Property Offenses are up, 47%. There are no other statistically significant changes noted for other offenses in this category.



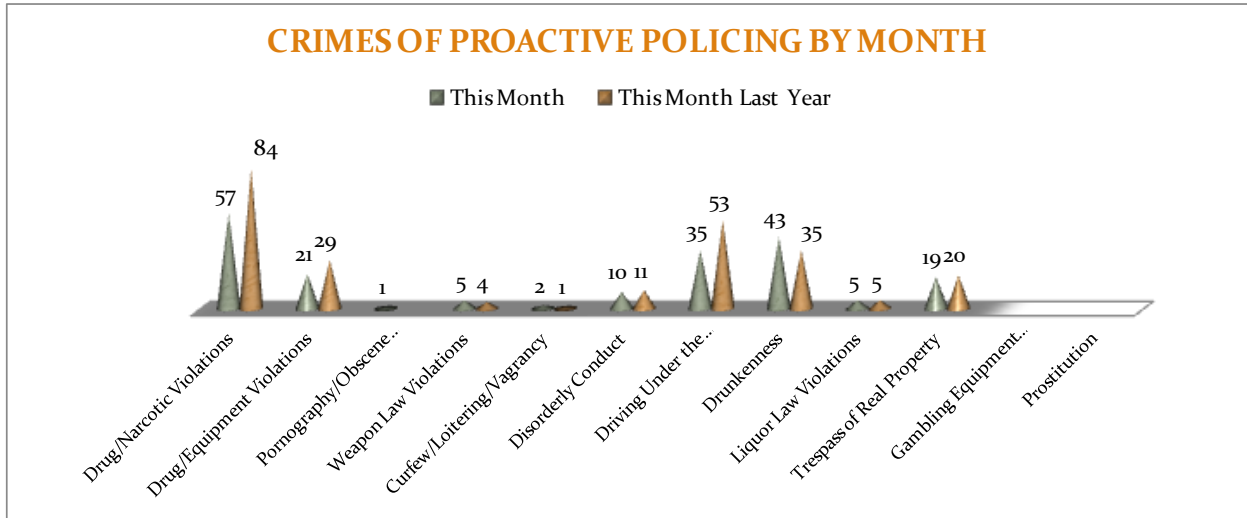
**CRIMES OF PROACTIVE POLICING**

Crimes of Proactive Policing are those crimes that result from police officers actively policing the streets to combat certain types of street crime. As a chart below indicates, twelve crimes fall under this category. A total of 198 offenses have been reported this month, a 18% decrease, comparing to June of

the last year. Drug/Narcotic Violations are down, -32% and Drunkenness is up +23%. Driving under the Influence is down, -34%. There are no other statistically significant changes noted for other offenses in this category.

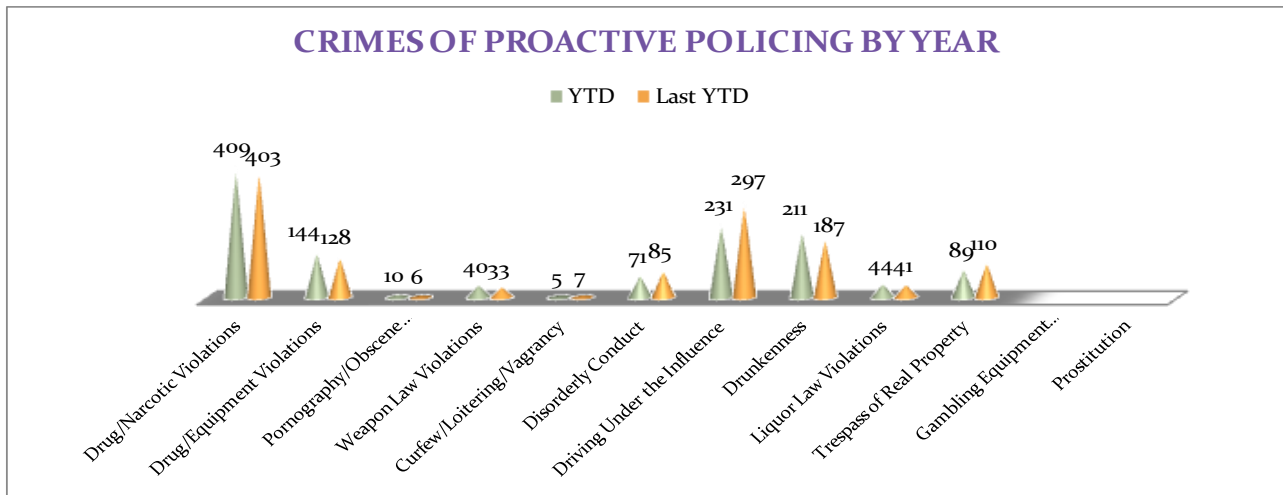
MONTHLY REPORT JUNE 2013

22 July 2013



To date for the year 2013, there have been 1254 crimes of proactive policing reported, a 3% decrease when comparing to the last year's to date data. Drug / Equipment Violations are up 13%, and Drunkenness is

up 11%, while Driving Under the Influence is down 22% and Disorderly Conduct is down 16%. There are no other statistically significant changes noted for other offenses in this category.



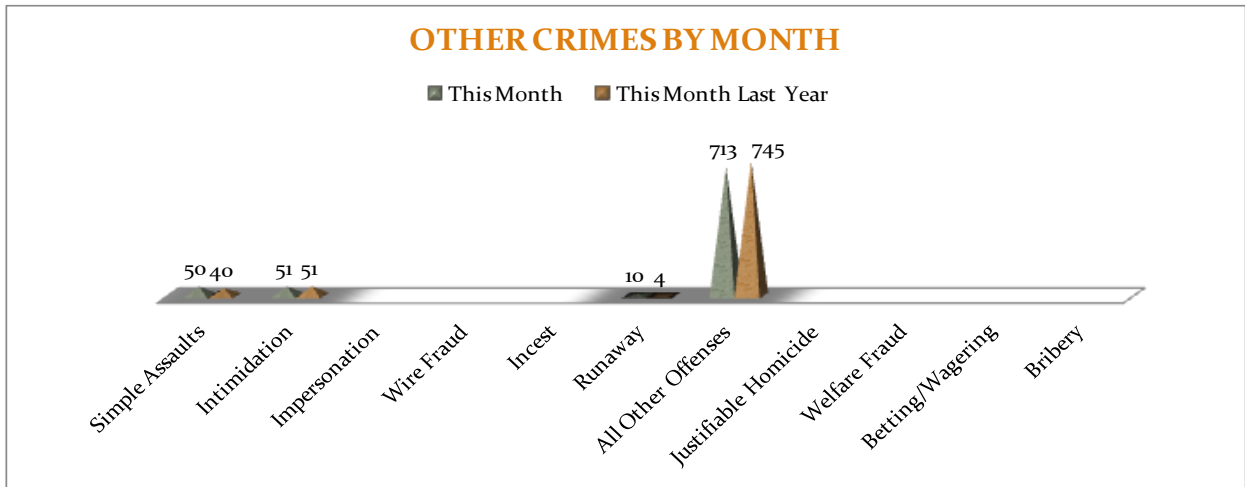
### OTHER CRIMES

There are 11 crimes that fall into the Other Crimes category. This month, there have been a total of 824 Other Crimes reported, a 2% decrease, comparing to June of the last

year. Simple Assaults increased by 25%, while All Other Offences decreased by 4%. No other significant changes are noted in this category of crimes this month.

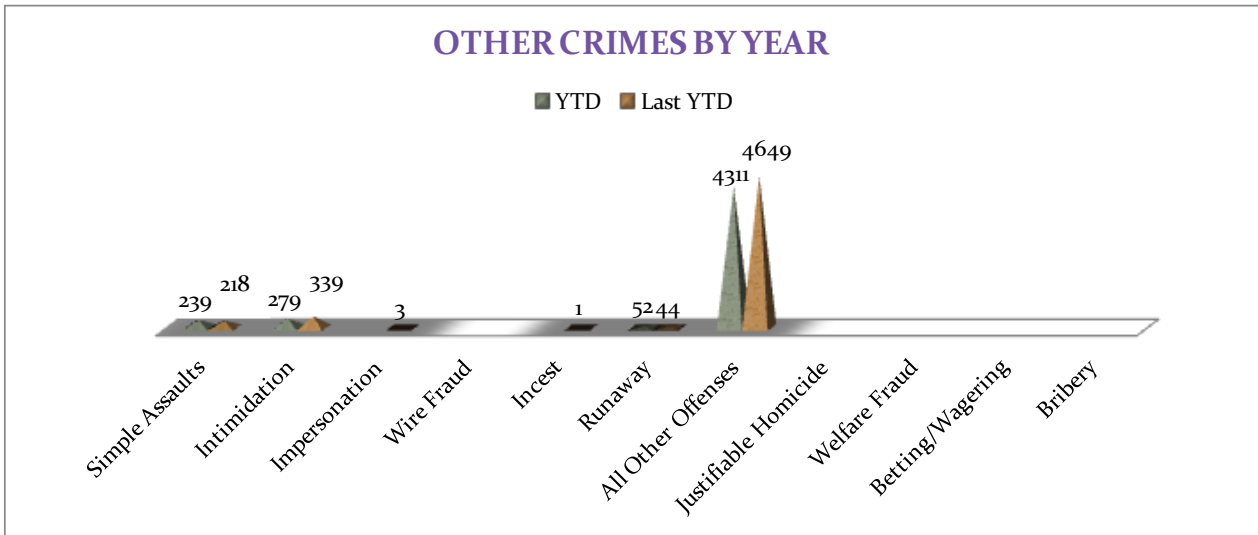
**MONTHLY REPORT JUNE 2013**

**22 July 2013**



To date this year, there have been 4881 Other Crimes offenses reported, a 7% decrease comparing to the last year's to date data. Intimidation offenses are down 18%, Simple Assaults increased by 10%, and All

Other Offenses decreased by 7%. No other significant changes have been observed for other offenses within this category, comparing to the last year's data.



**ARREST DEMOGRAPHICS**

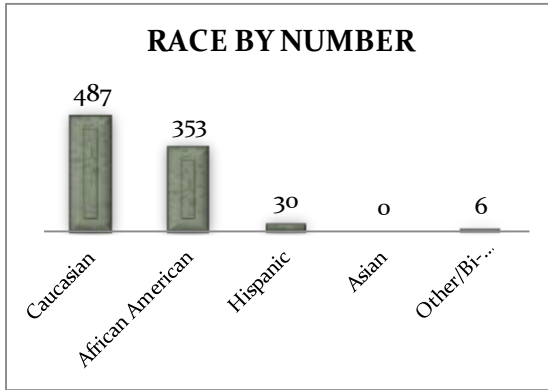
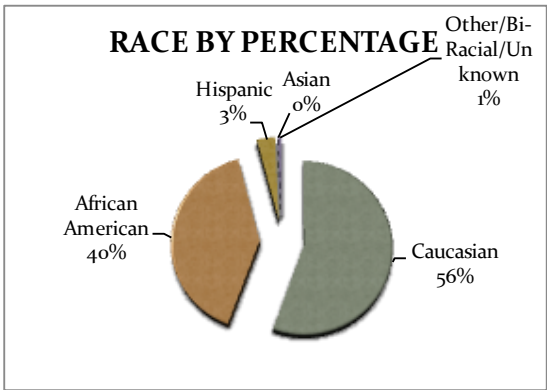
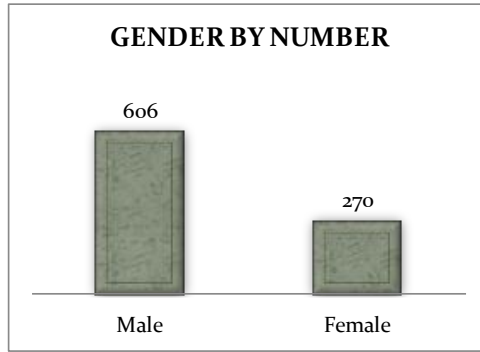
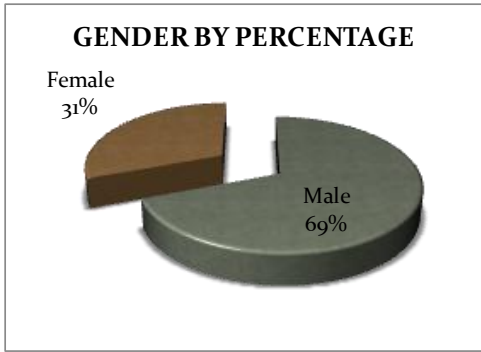
In June 2013, there were a total of 878 arrests carried out by the Jonesboro Police Department. Comparing with the last year's data for the month of June, there was a 2%

increase in arrests this month, which results in 55 arrests per 100 offenses in June of this year, comparing to 54 arrests per 100 offenses last year, a 3.1% increase for arrests per 100

22 July 2013

offenses. This section breaks down this month's arrests by race and gender. The majority of arrestees, 69%, have been male ( $n = 606$ ), as opposed to 31% of female arrestees ( $n = 270$ ). As for the racial/ethnic

composition, the majority of arrestees have been Caucasian (56%) and African American (40%) as opposed to Hispanic (3%), Asian (0%), or other/unknown/bi-racial (1%).



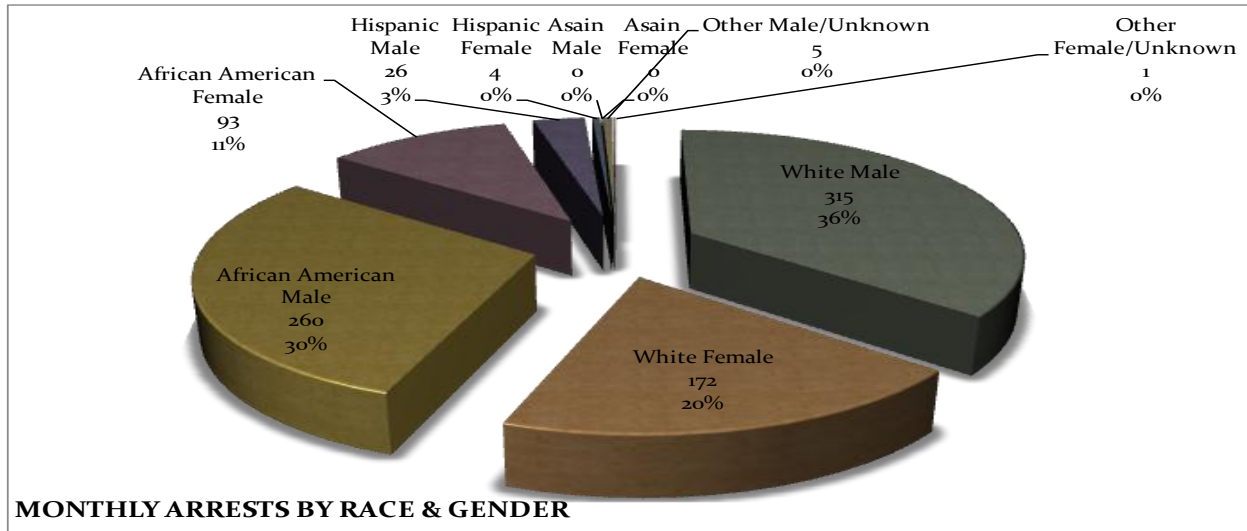
Caucasian males make up the majority, 36%, of arrestees this month ( $n = 315$ ). African American males make up 30% of arrestees for the month of June ( $n = 260$ ). Caucasian females make up 20% ( $n = 172$ ) and African American females make up 11% ( $n = 93$ ) of arrestees this month. Hispanic males make

up 3% ( $n = 26$ ), while Hispanic Females make up 0% of arestees this month ( $n = 4$ ). There were 0 Asain male and 5 Males of unknown race or ethnicity and 1 female of unknown race or ethnicity arested in June.



MONTHLY REPORT JUNE 2013

22 July 2013



**EMERGENCY 911**

Also known as Public Safety Answering Point (PSAP), the Emergency 911 Division is responsible for answering all calls from public for emergency assistance, accessing the needed information to best assist, and then assigning the most efficient and effective emergency response. In addition,

this division is responsible for setting priority call dispatching to field units including Police, Fire, and EMS. Emergency 911 also maintains all records for radio logs, calls for service, and other emergency service data collections.

Calls by Type	This Month	This Month Last Year	YTD	Last YTD	Change By Month	Change YTD
Land Line E911	1,073	824	4,744	4,629	30%	2%
Cell Phone E911	4,773	4,377	25,160	24,204	9%	4%
Admin Lines-non emer	14,376	16,720	86,347	103,418	-14%	-17%
<b>TOTALS</b>	<b>20,222</b>	<b>21,921</b>	<b>116,251</b>	<b>132,251</b>	<b>-8%</b>	<b>-12%</b>
Calls by Agency	This Month	This Month Last Year	YTD	Last YTD	Change By Month	Change YTD
Jonesboro PD Calls	6,485	7,400	39,512	42,171	-12%	-6%
Craighead Cty Sheriff	1,544	1,254	7,618	7,581	23%	0%
Jonesboro Fire Dpt - dispatch	181	238	1,178	1,309	-24%	-10%
Jonesboro Fire Dpt - Med Asst	155	120	827	704	29%	17%
Craighead Cty - Fire	42	81	248	424	-48%	-42%
Craighead Cty - 1st Responder	117	119	650	648	-2%	0%
Emerson Ambulance	267	280	1,662	1,807	-5%	-8%
Medic One	348	324	1,890	1,628	7%	16%
Air Evac	0	2	2	5	-100%	-60%
Coroner	2	5	21	18	-60%	17%
ARK State Police	16	16	68	89	0%	-24%
Jonesboro Animal Control	1	6	11	11	-83%	0%
Wreckers Called	137	187	993	986	-27%	1%
<b>TOTALS</b>	<b>9,295</b>	<b>10,032</b>	<b>54,680</b>	<b>57,381</b>	<b>-7%</b>	<b>-5%</b>

## MONTHLY REPORT JUNE 2013

22 July 2013

Calls by Municipality	This Month	This Month Last Year	YTD	Last YTD	Change By Month	Change YTD
Bay PD	185	82	768	655	126%	17%
Bono PD	346	305	1715	1566	13%	10%
Brookland PD	200	145	786	1059	38%	-26%
Caraway PD	51	142	382	919	-64%	-58%
Cash PD	131	24	210	165	446%	27%
Egypt PD	26	4	60	49	550%	22%
Lake City PD	135	132	788	952	2%	-17%
Monette PD	177	125	718	926	42%	-22%
<b>TOTALS</b>	<b>1,251</b>	<b>959</b>	<b>5,427</b>	<b>6,291</b>	<b>30%</b>	<b>-14%</b>

### UNIFORM PATROL DIVISION

The UPD is responsible for responding to calls into the Emergency - 911 Division by civilians and are normally the first responders. Jonesboro is divided into 6 patrol districts. Officers from UPD are

assigned to a district and work the same district every shift. In addition, when a Traffic Officer is not available, a UPD Officer will respond to traffic accidents and assist in directing traffic when necessary.

Incidents	This Month	This Month Last Year	YTD	Last YTD	Change By Month	Change YTD
Calls for Service	6,485	7,400	39,514	42,801	-12%	-8%
Complaints	4,711	4,098	25,315	23,846	15%	6%
Assists	942	1,192	9,075	7,191	-21%	26%
Incident Reports	975	938	6,162	5,187	4%	19%
Street Accidents	98	84	546	448	17%	22%
Private Property Accidents	40	46	309	269	-13%	15%
Traffic Stops	1,774	2,024	14,199	12,425	-12%	14%
Traffic Citations	553	728	4,770	4,217	-24%	13%
Written Warnings	718	913	6066	5,348	-21%	13%
DWI	24	42	268	244	-43%	10%
Mis. Arrests	510	491	3,353	2,843	4%	18%
Felony Arrests	125	115	690	565	9%	22%
Warrants Served	1,317	1,416	9,563	8,246	-7%	16%
Alarms	414	372	2,385	1,971	11%	21%
<b>TOTALS</b>	<b>18,686</b>	<b>19,859</b>	<b>122,215</b>	<b>115,601</b>	<b>-6%</b>	<b>6%</b>
Hours Worked	7,408	8,965	61,464	54,056	-17%	14%

### PROWL

The Prowl unit is a uniformed street crimes unit specializing in criminal patrol, narcotics enforcement, gang investigation, and prostitution activity. The unit conducts directed patrols, investigates citizen

complaints of street-level criminal activity, and directly assists the 2<sup>nd</sup> Judicial Drug Task Force. PROWL also assists any division within the Jonesboro Police Department at any time when needed.

# MONTHLY REPORT JUNE 2013

22 July 2013

Incidents	This Month	This Month Last Year	YTD	Last YTD	Change By Month	Change YTD
Street Accidents	0	0	0	0	N/C	N/C
Private Property Accidents	0	0	2	1	N/C	100%
Traffic Citations	15	51	94	212	-71%	-56%
DWI	0	0	0	1	N/C	-100%
Mis. Arrests	80	330	653	1,228	-76%	-47%
Felony Arrests	28	39	153	174	-28%	-12%
Drug Arrests	21	37	167	174	-43%	-4%
Public Intoxication Arrests	0	0	0	1	N/C	-100%
Calls For Service	71	127	446	542	-44%	-18%
Alarms	0	0	0	0	N/C	N/C
Parking Citations	0	0	0	0	N/C	N/C
Written Warnings	42	76	350	320	-45%	9%
Assists	0	0	0	0	N/C	N/C
<b>TOTALS</b>	<b>257</b>	<b>660</b>	<b>1,865</b>	<b>2,653</b>	<b>-61%</b>	<b>-30%</b>
Value of Drugs Seized	\$ 4,100	\$ 20,200	\$ 75,840	\$ 64,185	-80%	18%
Value of Asstes Seized	\$ 300	\$ 8,200	\$ 12,603	\$ 32,418	-96%	-61%
Patrol Miles	7,000	6,950	44,750	35,750	1%	25%

## CRIMINAL INVESTIGATIVE DIVISION

The CID is responsible for conducting follow-up investigations into criminal acts reported to the Jonesboro Police Department. The primary goal is to collect and present evidence that conclusively leads

to a successful arrest. Additionally, CID is charged with clearing additional crimes, recovering stolen property, preventing additional crimes, and gathering intelligence information.

Investigations	This Month	This Month Last Year	YTD	Last YTD	Change By Month	Change YTD
Criminal Investigations Assigned	122	82	669	417	49%	60%
Criminal Investigations Closed	64	53	463	290	21%	60%
Cleared by Arrests	33	37	288	200	-11%	44%
Unfounded	10	6	47	35	67%	34%
Exceptionally Cleared	12	7	75	28	71%	168%
Filed With Prosecutors Office	6	4	34	22	50%	55%
<b>Crimes Against Persons</b>	<b>This Month</b>	<b>This Month Last Year</b>	<b>YTD</b>	<b>Last YTD</b>	<b>Change By Month</b>	<b>Change YTD</b>
Criminal Investigations Closed	20	23	150	95	-13%	58%
Cleared by Arrests	13	17	106	69	-24%	54%
Unfounded	3	1	14	8	200%	75%
Exceptionally Cleared	3	2	19	7	50%	171%
Filed With Prosecutors Office	1	3	11	11	-67%	0%
<b>Property Crimes</b>	<b>This Month</b>	<b>This Month Last Year</b>	<b>YTD</b>	<b>Last YTD</b>	<b>Change By Month</b>	<b>Change YTD</b>
Criminal Investigations Assigned	84	56	453	290	50%	56%
Criminal Investigations Closed	38	29	250	175	31%	43%
Unfounded	7	5	25	23	40%	9%
Exceptionally Cleared	9	5	49	20	80%	145%
Filed With Prosecutors Office	4	0	12	7	N/C	71%
<b>Crimes Against Children</b>	<b>This Month</b>	<b>This Month Last Year</b>	<b>YTD</b>	<b>Last YTD</b>	<b>Change By Month</b>	<b>Change YTD</b>
Criminal Investigations Assigned	11	2	42	12	450%	250%
Criminal Investigations Closed	3	2	44	16	50%	175%
Cleared by Arrests	2	1	18	8	100%	125%
Unfounded	0	0	9	5	N/C	80%

**MONTHLY REPORT JUNE 2013**

**22 July 2013**

Filed With Prosecutors Office	1	1	11	5	0%	120%
Miscellaneous Investigations Assigned	2	1	2	1	100%	100%
Miscellaneous Investigations Cleared	3	2	12	10	50%	20%
<b>FINGERPRINTS</b>	This Month	This Month Last Year	YTD	Last YTD	Change By Month	Change YTD
<b>Rolled for the Public</b>	148	91			n/a	n/a

**WARRANTS**

The Warrants Division is responsible for serving warrants, criminal summonses, and subpoenas that are issued by the District Court. On city court days, the Warrants Division provides a bailiff for court and a transport officer. In addition, this Division is responsible for transporting wanted persons arrested in other jurisdictions back to

Jonesboro. The STEP program operates within this division and is a grant-funded operation in which officers can get paid overtime to enforce the safety belt law.

**\*Due to technical difficulties the stats for Warrants Division are unavailable for this month.**

<b>Arrests</b>	This Month	This Month Last Year	YTD	Last YTD	Change By Month	Change YTD
Misdemeanor					N/C	N/C
Felony					N/C	N/C
<b>Total Arrests</b>	0	0	0	0	N/C	N/C
<b>Warrants by Activity</b>	This Month	This Month Last Year	YTD	Last YTD	Change By Month	Change YTD
Subpoenas					N/C	N/C
Commitments					N/C	N/C
Traffic Citations					N/C	N/C
Complaints					N/C	N/C
Assist					N/C	N/C
Alarms					N/C	N/C
<b>Hours by Activity</b>	This Month	This Month Last Year	YTD	Last YTD	Change By Month	Change YTD
SI Criminal					N/C	N/C
Court					N/C	N/C
Prisoner Transport					N/C	N/C
<b>Hours Worked</b>	This Month	This Month Last Year	YTD	Last YTD	Change By Month	Change YTD
Regular Hours Worked					N/C	N/C
Overtime Hours Worked					N/C	N/C
<b>TOTAL Hours Worked</b>	0	0	0	0	N/C	N/C
<b>Mileage</b>	This Month	This Month Last Year	YTD	Last YTD	Change By Month	Change YTD
<b>Total Mileage</b>					N/C	N/C

# MONTHLY REPORT JUNE 2013

22 July 2013

STEP	This Month	This Month Last Year	YTD	Last YTD	Change By Month	Change YTD
DWI Arrest					N/C	N/C
DUI Arrest					N/C	N/C
Traffic Citations					N/C	N/C
Felony Arrests					N/C	N/C
Drug Arrests					N/C	N/C
<b>STEP TOTALS</b>	<b>o</b>	<b>o</b>	<b>o</b>	<b>o</b>	<b>N/C</b>	<b>N/C</b>
<b>STEP Hours Worked</b>					<b>N/C</b>	<b>N/C</b>
<b>STEP Miles Driven</b>					<b>N/C</b>	<b>N/C</b>

## DRUG TASK FORCE

The DTF is responsible for investigating major drug traffickers in the area, including all types of illegal drugs.

The DTF works closely with local, state, and federal agencies to eradicate drugs from the community.

INVESTIGATIONS	This Month	This Month Last Year	YTD	Last YTD	Change By Month	Change YTD
Opened	24	20	119	155	20%	-23%
Closed	11	20	90	122	-45%	-26%
<b>TOTAL</b>	<b>35</b>	<b>40</b>	<b>209</b>	<b>277</b>	<b>-13%</b>	<b>-25%</b>
With Nexus to Jonesboro	This Month	This Month Last Year	YTD	Last YTD	Change By Month	Change YTD
Opened	18	20	114	148	-10%	-23%
Closed				0	N/C	N/C
<b>TOTAL</b>	<b>18</b>	<b>20</b>	<b>114</b>	<b>148</b>	<b>-10%</b>	<b>-23%</b>
Outside Jonesboro (No Known Nexus)	This Month	This Month Last Year	YTD	Last YTD	Change By Month	Change YTD
Opened	2	1	2	7	1300%	-71%
Closed	0	0		0	0%	N/C
<b>TOTAL</b>	<b>2</b>	<b>1</b>	<b>2</b>	<b>7</b>	<b>100%</b>	<b>-71%</b>
ASSISTANCE RENDERED	This Month	This Month Last Year	YTD	Last YTD	Change By Month	Change YTD
Assist to Outside Agencies	0	9	0	40	-100%	-100%
Assist to Jonesboro UPD/CID	0	7	51	79	-100%	-35%
ARRESTS	This Month	This Month Last Year	YTD	Last YTD	Change By Month	Change YTD
Miscellaneous	3	6	33	46	-50%	-28%
Felony	24	23	149	161	4%	-7%
Marijuana	1	3	33	23	-67%	43%
Cocaine	0	0	7	12	N/C	-42%
Crack Cocaine	0	1	4	18	-100%	-78%
Methamphetamine/ICE	7	6	53	48	17%	10%
LSD	0	0	0	0	N/C	N/C
Extasy (MDMA or Other Designer Drug)	0	0	2	0	N/C	N/C
Prescription	2	1	18	9	100%	100%
Opiates (Heroin, Opium)	0	0	0	0	N/C	N/C
Labs	0	2	1	4	-100%	-75%
All Other Drug Offenses	10	3	48	21	233%	129%
ASSET FORFEITURE	This Month	This Month Last Year	YTD	Last YTD	Change By Month	Change YTD
Vehicles Seized (No.)	\$ -	\$ 1.00	\$ 2.00	\$ 1.00	-100%	100%
Value of Assets Seized(Includes Value of vehicles)	\$ -	\$ 5,000.00	\$ 6,700.00	\$ 7,400.00	-100%	-9%
Asset Value Awarded to Jonesboro PD (State)		\$ -	\$ -	\$ -	N/C	N/C
Asset Value Awarded to Jonesboro PD (Federal)		\$ -	\$ -	\$ -	N/C	N/C
Asset Value Awarded to Jonesboro PD (Total)		\$ -	\$ -	\$ -	N/C	N/C

# MONTHLY REPORT JUNE 2013

22 July 2013

ARRESTS DEMOGRAPHICS	This Month	This Month Last Year	YTD	Last YTD	Change By Month	Change YTD
White	14	12	88	66	17%	33%
African American	2	5	28	49	-60%	-43%
Latino	0	2	4	13	-100%	-69%
Asian	0	0	0	0	N/C	N/C
Other/Bi-Racial	0	0	0	0	N/C	N/C
Male	11	12	81	90	-8%	-10%
Female	5	7	30	38	-29%	-21%
White Male	10	6	54	37	67%	46%
White Female	4	5	24	26	-20%	-8%
African American Male	1	4	23	39	-75%	-41%
African American Female	1	1	5	9	0%	-44%
Latino Male	0	2	3	11	-100%	-73%
Latino Female	0	0	0	0	N/C	N/C
Asian Male	0	0	0	0	N/C	N/C
Asian Female	0	0	0	0	N/C	N/C
Other/Bi-Racial Male	0	0	0	0	N/C	N/C
Other/Bi-Racial Female	0	0	0	0	N/C	N/C

## TRAFFIC

Comprised of three motor units and three Chargers, the Traffic Enforcement Unit responds to traffic accidents and provides increased enforcement in particularly challenging areas. This unit also provides

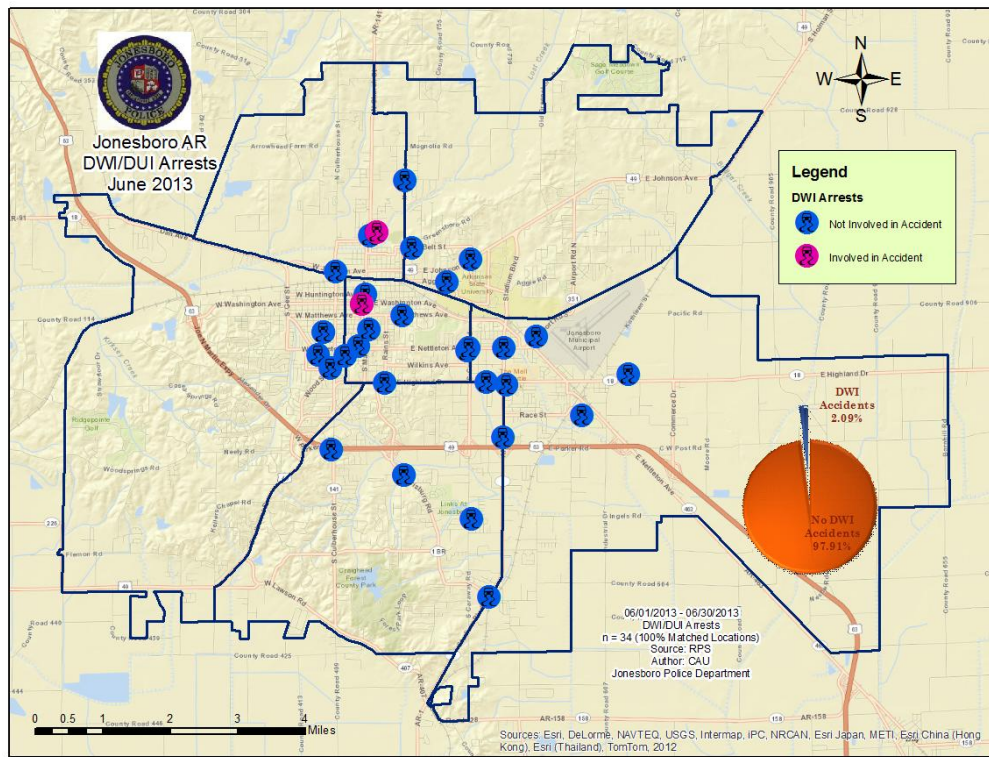
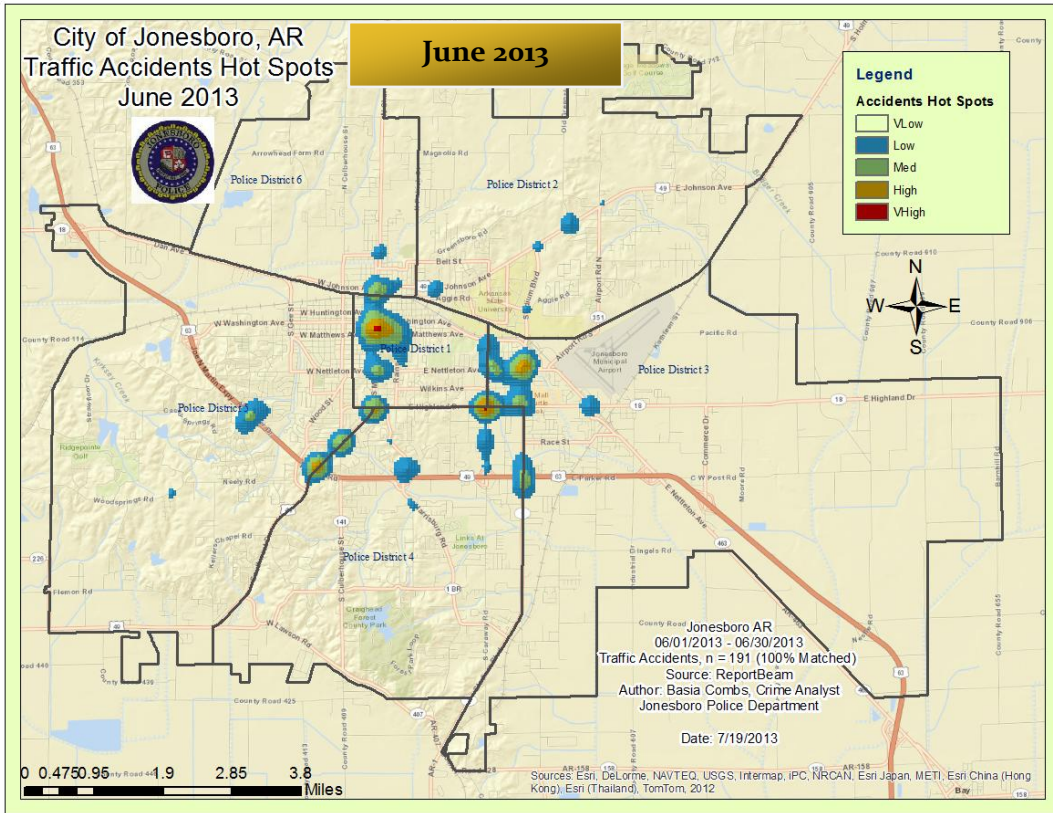
extra coverage for specific congestion problems and special events in the community. Last, they work details targeting specific issues, such as DWI enforcement and traffic safety checkpoints.

Incidents	This Month	This Month Last Year	YTD	Last YTD	Change By Month	Change YTD
Street Accidents	96	114	790	786	-16%	1%
Private Property Accidents	56	31	243	215	81%	13%
Traffic Citations	56	134	527	835	-58%	-37%
DWI	0	5	7	22	-100%	-68%
Mis. Arrests	3	16	36	100	-81%	-64%
Felony Arrests	0	1	4	2	-100%	100%
Drug Arrests	0	0	0	0	N/C	N/C
Public Intoxication Arrests	0	0	0	0	N/C	N/C
Calls For Service	196	253	1320	1466	-23%	-10%
Alarms	0	0	0	0	N/C	N/C
Parking Citations	0	0	0	0	N/C	N/C
Written Warnings	135	139	850	693	-3%	23%
<b>TOTALS</b>	<b>542</b>	<b>693</b>	<b>3777</b>	<b>4119</b>	<b>-22%</b>	<b>-8%</b>
Value of Asstes Seized					N/C	N/C
Patrol Miles					N/C	N/C
Hours Worked					N/C	N/C



# MONTHLY REPORT JUNE 2013

22 July 2013



# MONTHLY REPORT JUNE 2013

22 July 2013

## ANIMAL CONTROL

The Animal Control Division is responsible for educating the public on safe and humane issues regarding animal treatment, enforcing all animal laws and ordinances, assisting the

public in resolving animal issues, and protecting the safety and welfare of the citizens and animals in this community.

Incident/Service	This Month	This Month Last Year	YTD	Last YTD	Change By Month	Change YTD
Barking Complaints	5	9	56	54	-44%	4%
Bite Reports	2	4	30	49	-50%	-39%
Door Hangers	51	21	317	268	143%	18%
Welfare Checks	53	41	297	556	29%	-47%
Advised of Rights	1073	813	5862	5047	32%	16%
Incident Reports	2	5	12	41	-60%	-71%
Gone on Arrival	67	48	310	334	40%	-7%
Complaints	732	460	4312	4435	59%	-3%
Desk Complaints	1554	1608	8994	8281	-3%	9%
Captured Dogs	161	104	909	863	55%	5%
Captured Cats	26	11	101	40	136%	153%
Captured Wildlife	70	32	226	155	119%	46%
Chemical Captures	0	1	4	18	-100%	-78%
Traps	90	56	231	216	61%	7%
Deceased Animals	24	53	298	507	-55%	-41%
Assist J.P.D.	7	5	26	28	40%	-7%
Assist C.S.O.	0	0	4	1	N/C	300%
Public Relations	293	589	1937	2894	-50%	-33%
Incident/Service	This Month	This Month Last Year	YTD	Last YTD	Change By Month	Change YTD
CITATIONS ISSUED	18	27	238	326	-33%	-27%
WARNINGS ISSUED	This Month	This Month Last Year	YTD	Last YTD	Change By Month	Change YTD
WARNINGS ISSUED	115	11	595	225	945%	164%
Physical Arrests	5	2	19	8	150%	138%
City Warrants Served	5	4	38	25	25%	52%
County Warrants Served	0	0	3	14	N/C	-79%
Felony Bench Warrants	0	1	2	1	-100%	100%
Euthanized	121	93	600	419	30%	43%
Deceased Animals Landfill lbs.	4020	3400	24380	21436	18%	14%
Wildlife Euthanized	70	32	226	155	119%	46%
Sent to Rescue Centers	4	3	27	50	33%	-46%
Adoptions	49	46	223	281	7%	-21%
Miles Driven	9,245	7009	54,001	41,581	32%	30%

## FLEET MAINTNANCE

The Fleet Maintenance is responsible for all of the police vehicle maintenance upkeep, cleanliness, and purchasing. In addition, this

Division handles most of the purchasing of equipment, supplies, and uniforms for all of the Police Department.



# MONTHLY REPORT JUNE 2013

22 July 2013

Repair Costs by Model Year	This Month	This Month Last Year	YTD	Last YTD	Change By Month	Change YTD
95-99	\$0.00	\$0.00	\$0.00	\$0.00	N/C	N/C
2000	\$0.00	\$0.00	\$0.00	\$0.00	N/C	N/C
2001	\$0.00	\$0.00	\$0.00	\$300.46	N/C	-100%
2002	\$0.00	\$0.00	\$0.00	\$0.00	N/C	N/C
2003	\$0.00	\$0.00	\$1,205.15	\$0.00	N/C	N/C
2004	\$1,931.36	\$11.61	\$1,968.79	\$1,414.43	16535%	39%
2005	\$0.00	\$0.00	\$0.00	\$712.04	N/C	-100%
2006	\$2,644.85	\$4,792.12	\$21,384.09	\$24,310.85	-45%	-12%
2007	\$1,168.78	\$95.27	\$14,738.62	\$6,683.78	1127%	121%
2008	\$0.00	\$193.70	\$2,796.04	\$2,116.72	-100%	32%
2009	\$132.87	\$697.86	\$1,891.23	\$1,628.72	N/C	N/C
2010	\$0.00	\$0.00	\$442.57	\$489.28	N/C	N/C
2011	\$144.48	\$39.47	\$1,532.18	\$796.79	N/C	N/C
2012	\$0.00	\$0.00	\$0.00	\$0.00	N/C	N/C
2013	\$42.14	n/a	\$42.14	n/a	N/C	N/C
<b>Totals</b>	<b>\$6,064.48</b>	<b>\$5,830.03</b>	<b>\$46,000.81</b>	<b>\$38,453.07</b>	<b>4%</b>	<b>20%</b>

Routine Preventative Maintenance by Model Year	This Month	This Month Last Year	YTD	Last YTD	Change By Month	Change YTD
95-99	\$0.00	\$0.00	\$174.13	\$72.00	N/C	142%
2000	\$0.00	\$0.00	\$20.00	\$20.00	N/C	0%
2001	\$0.00	\$0.00	\$186.59	\$0.00	N/C	N/C
2002	\$0.00	\$0.00	\$20.00	\$100.46	N/C	-80%
2003	\$20.00	\$0.00	\$347.59	\$172.00	N/C	102%
2004	\$0.00	\$20.00	\$570.39	\$218.00	-100%	162%
2005	\$40.00	\$82.00	\$1,410.32	\$527.35	-51%	167%
2006	\$1,080.62	\$1,792.98	\$8,468.76	\$9,643.61	-40%	-12%
2007	\$1,737.77	\$1,131.88	\$7,330.43	\$6,464.37	54%	13%
2008	\$750.22	\$44.50	\$3,617.47	\$2,119.81	1586%	71%
2009	\$267.00	\$1,516.80	\$3,440.45	\$5,468.42	N/C	N/C
2010	\$327.02	\$148.50	\$890.91	\$1,664.46	N/C	N/C
2011	\$163.50	\$166.50	\$6,808.19	\$987.00	N/C	N/C
2012	\$0.00	\$0.00	\$408.42	\$352.81	N/C	N/C
2013	\$0.00	n/a	\$939.93		N/C	N/C
<b>Totals</b>	<b>\$4,386.13</b>	<b>\$4,903.16</b>	<b>\$34,633.58</b>	<b>\$27,810.29</b>	<b>-11%</b>	<b>25%</b>

## RECORDS

The Records Division is responsible for providing administrative and clerical support to the department. Major responsibilities include entering the accident and incident reports and tickets into the records database management system, assisting the general

public for report requests, performing criminal backgrounds, serving as a switchboard at times, performing validations, and setting up and managing the payment plans out of court.

RECORDS	This Month	This Month Last Year	YTD	Last YTD	Change By Month	Change YTD
Incident/Arrest Reports Processed	1263	1234	7404	7644	2%	-3%
Accident Reports Processed	191	193	1239	1202	-1%	3%
Citations Processed	3208	4159	20026	25856	-23%	-23%
Warnings Processed	656	986	5163	5260	-33%	-2%
Backgrounds	21	12	109	77	75%	42%
Photos	0	91	639	714	-100%	-11%
Accident Requests	0	3	3	3	-100%	0%
Accident Requests Online	90	99	650	716	-9%	-9%
<b>TOTALS</b>	<b>105</b>	<b>116</b>	<b>771</b>	<b>643</b>	<b>-9%</b>	<b>20%</b>

## MONTHLY REPORT JUNE 2013

22 July 2013

### PROFESSIONAL STANDARDS

The Office of Professional Standards, a unit within Administration, is charged with the compilation and updating of an extensive set of policies and procedures and providing a general operations guideline and code of conduct for officers to follow. In the event

that a member of the public does experience a negative interaction with an officer, mechanisms are in place for them to lodge a complaint. All complaints are reviewed and investigations completed in a timely manner.

Professional Standards	This Month	This Month Last Year	YTD	Last YTD	Change By Month	Change YTD
Opened (TOTAL)	1	7	16	42	-86%	-62%
Closed	1	7	15	40	-86%	-63%
Inquiries	0	6	12	33	-100%	-64%
Formal Investigations	1	1	4	4	0%	0%
Sustained	1	4	10	32	-75%	-69%
Not-Sustained	0	1	0	1	-100%	-100%
Exonerated	0	0	3	1	N/C	200%
Unfounded	0	2	5	8	-100%	-38%

END OF REPORT



#### Contact Information

Basia Combs, MPA, CCIA | Crime Analyst | Office of Crime Analysis & Criminal Intelligence  
Jonesboro Police Department | 410 W Washington Ave | Jonesboro, AR 72401  
Ph: 870-336-7196 | E-mail: [bcombs@jonesboro.org](mailto:bcombs@jonesboro.org) | [www.jonesboropolice.com](http://www.jonesboropolice.com)