
JPD Monthly Report

May 2010

Heather Clements,
Crime Analyst



Executive Summary

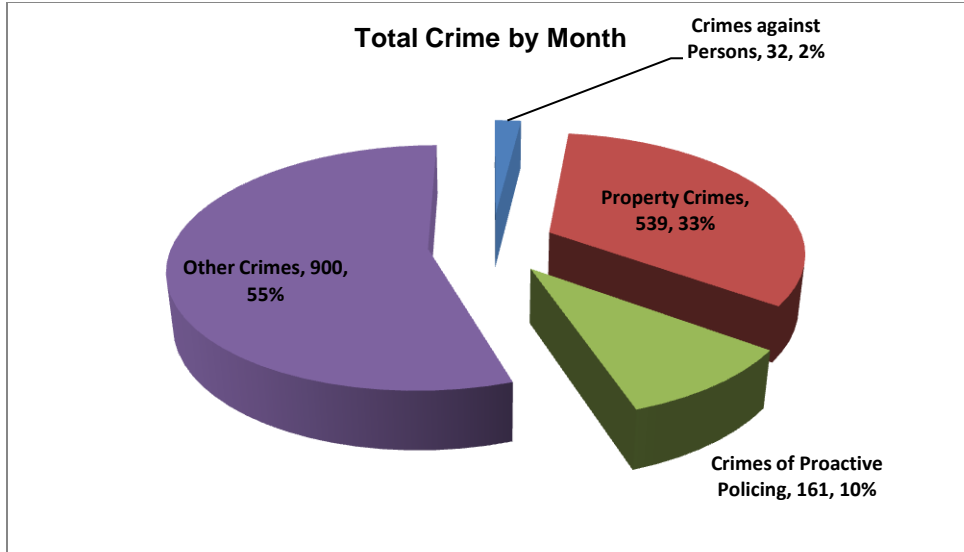
The purpose of the Jonesboro Police Department Monthly Report is to compile data into one integrated report for review, allowing for a seamless flow of information for better decision-making. After each department collates their monthly numbers and sends it to Crime Analysis, it is organized into sections of departmental data, analyzed and packaged, and finally disseminated to department heads, the Chief of Police, the City Mayor, and the City Council. Major sections include Crime Analysis, Emergency 911, Uniform Police Division, Prowl, Criminal Investigative Division, Warrants, Drug Task Force, Traffic, Parking Enforcement, Animal Control, Fleet Maintenance, Records, and Professional Standards.

Crime Analysis

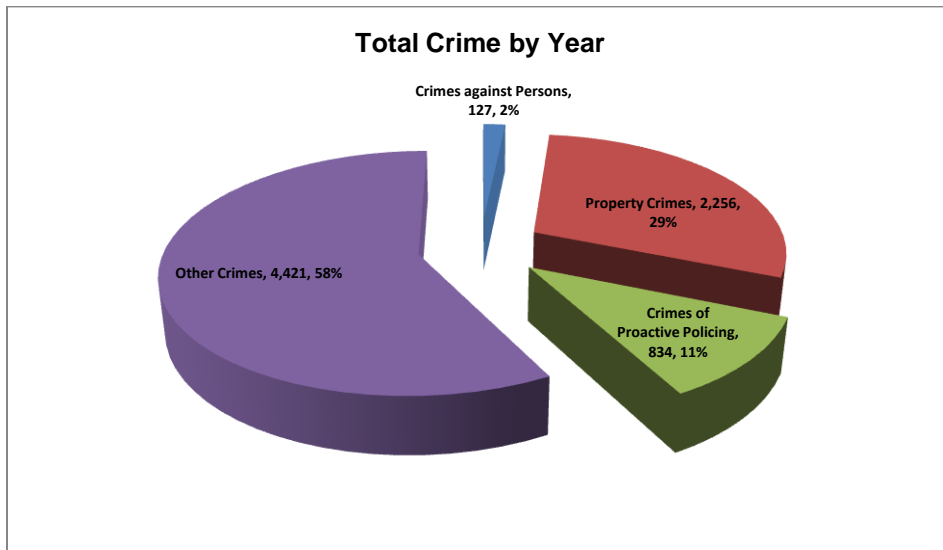
The Crime Analysis division consists of a Crime Analyst and an assistant. The Crime Analyst position is responsible for the analysis and dissemination of crime activity data and the collection and maintenance of crime intelligence information for the city of Jonesboro. Additionally, the Crime Analyst is charged with providing the department with current and accurate crime maps, presenting crime activity data to audiences of interest, and responding to requests for crime data from civilians and departmental staff. Data exported from this division is used by field agents for more effective, efficient policing, administration for improved staffing decisions, and the Mayor's office for community decision making and enhanced public relations. This section is broken down by 6 sections: total crime, crimes against persons, property crimes, crimes of proactive policing, other crimes, and arrest demographics.

Total Crime

The crime activity for this month is at a total of 1,632 offenses, up from 1,446 offenses last May, a 13% increase. Other crimes absorb the majority of this month's crime activity at 55% ($n = 900$). Property crimes fall in second place with 33% ($n = 539$). Following in third and fourth places are crimes of proactive policing at 10% ($n = 161$), and crimes against persons with only 2% ($n = 32$).



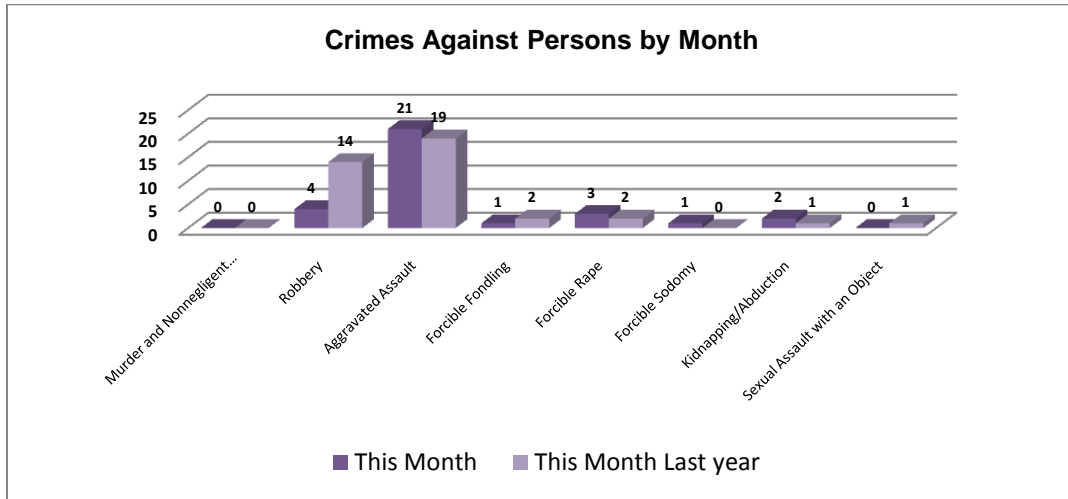
Year to date data includes January, February, March, April, and May data combined, of which there is a total of 7,638 offenses, up from 6,098 last May, a 63% increase. Again, other crimes has the highest percentage to total crimes at 58% ($n = 4,421$). Similar to this month's data, property crimes take second place at 29% ($n = 2,256$). Following are the crimes of proactive policing at 11% ($n = 834$) and crimes against persons at 2% ($n = 127$).



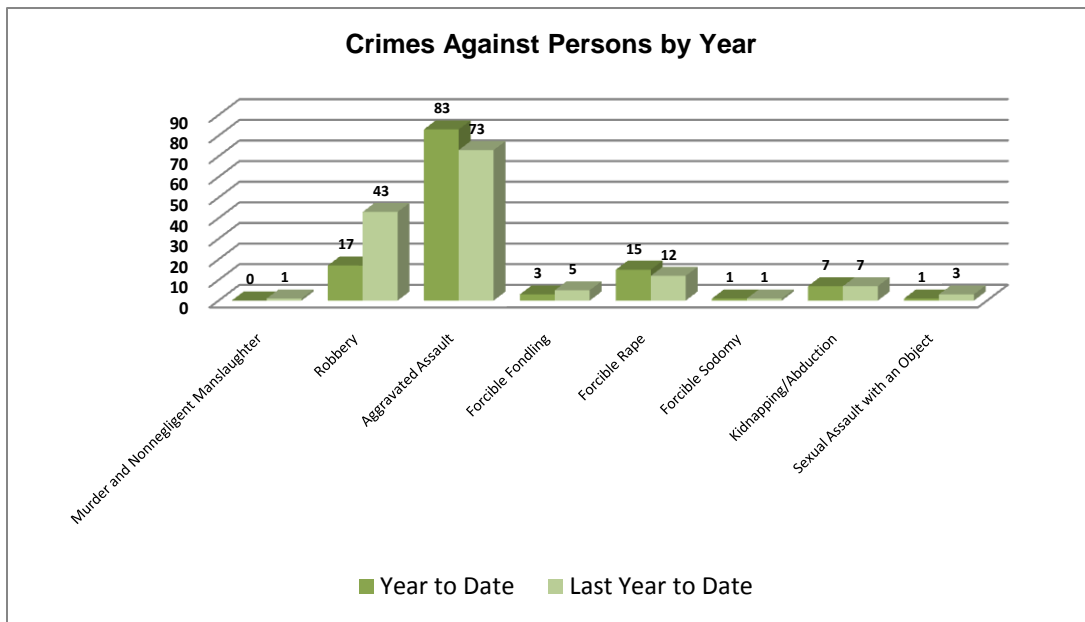
Crimes against Persons

There are 8 crimes that make up this section. There were a total of 32 offenses in this area this month, down from 39 last May, a 18% decrease. The following chart demonstrates this month's activity compared to May of last year's activity in all 8 areas. Significantly lower are the

robberies down to 4 from 14, a 71% decrease. Most other crimes are relatively the same as last May.



Below is a bar graph indicating the year to date data for crimes against persons. Total number of year to date crimes against persons is 127, down from 145 last May. Similar to above, year to date robberies are down 60% from this time last year. There are very few changes in other areas.

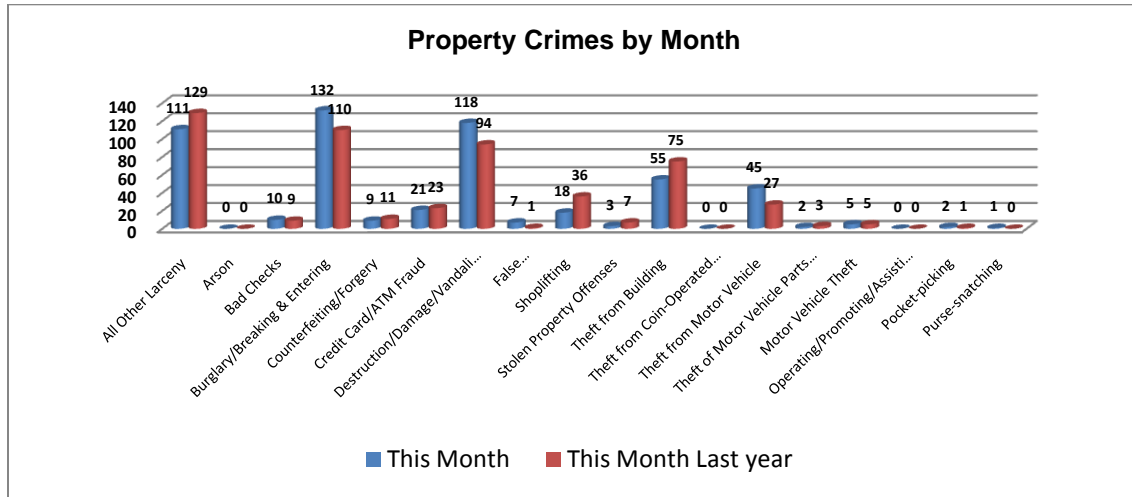


*Arkansas State University had 1 murder on campus in April, but this statistic is reported by ASU and not the City of Jonesboro.

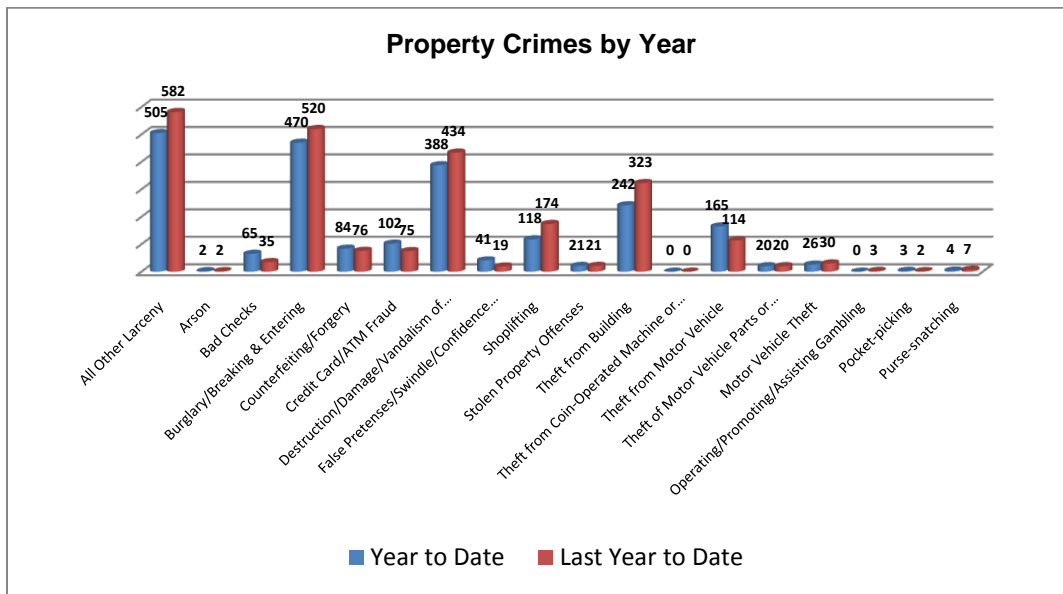
Property Crimes

This section displays the criminal activity for 18 crimes, all against property. This month, there were a total of 539 property crimes, just barely up from 531 last May. Larcenies and thefts from

buildings are significantly lower than last May; however, burglaries, vandalisms, and thefts from motor vehicles are up.



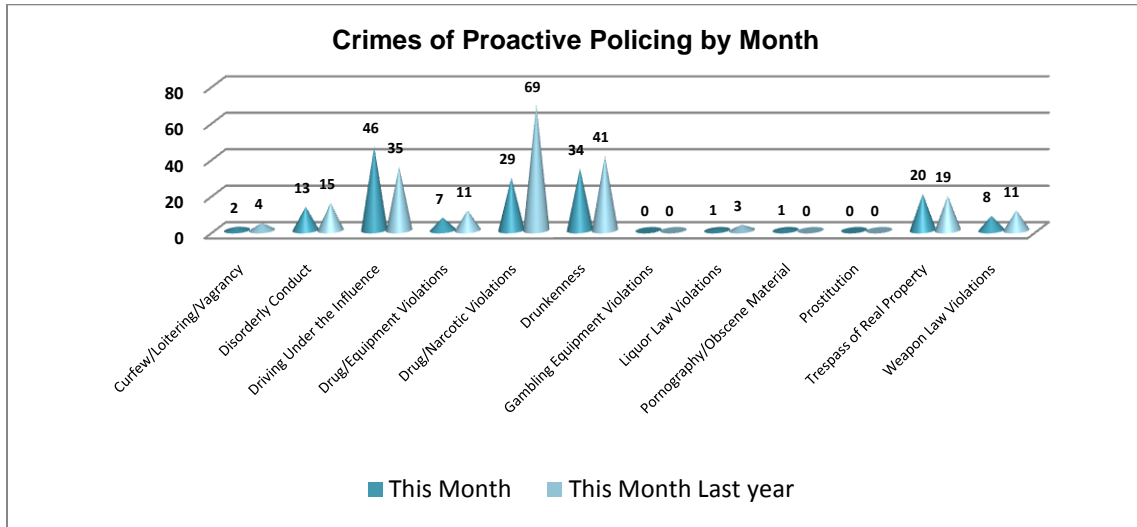
To date this year, 2,256 property offenses have occurred, down from 2,437 last year at this same time. This is a 7% decrease in property crimes from this time last year. By reviewing the chart below, it is noticeable that larceny, burglary, vandalism, shoplifting, and theft from buildings are much lower than this time last year. However, counterfeiting, credit card fraud, swindling, and theft from motor vehicles are much higher than this time last year.



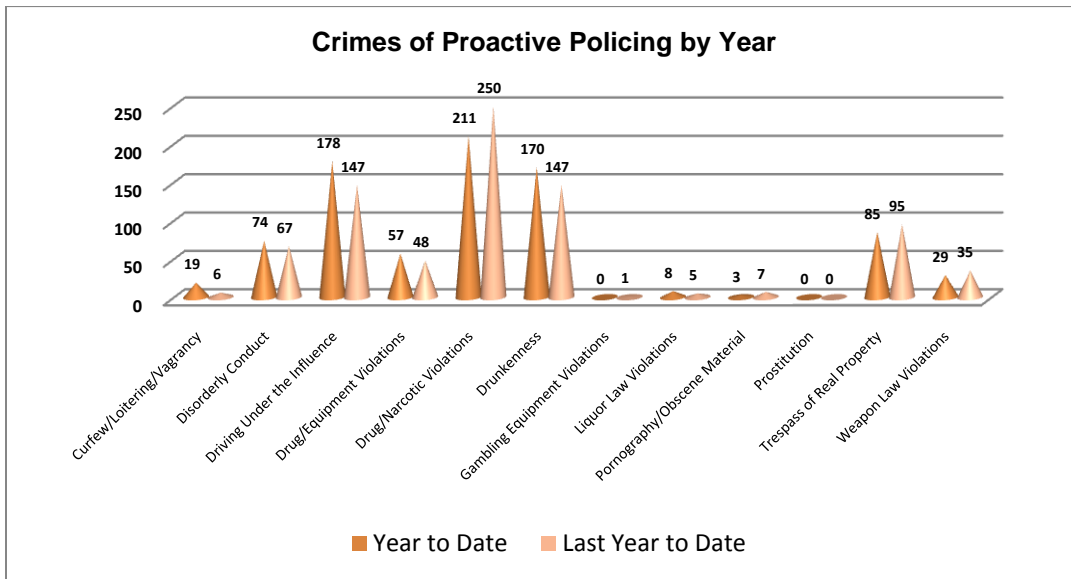
Crimes of Proactive Policing

Crimes of proactive policing are those crimes that result from police officers actively policing the streets to combat certain types of street crime. Twelve crimes fall under this category. A total of 161 offenses have occurred this month, a 23% decrease from last May ($n = 208$). A significant

decrease is in drug/narcotic violations (down 58%). DWI/DUI's are significantly higher; however, by 31%.

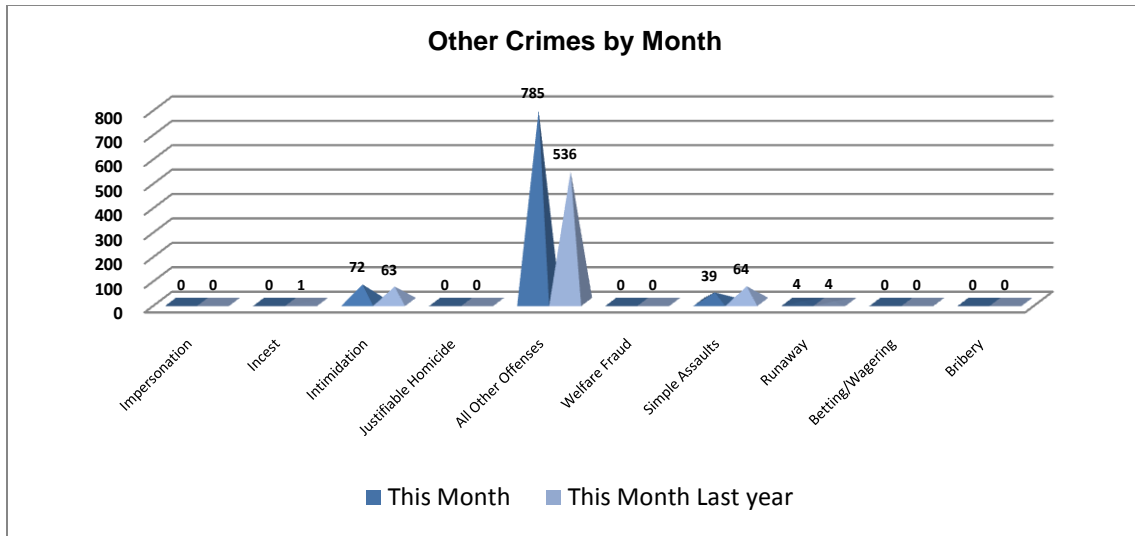


To date for the year, there have been 834 crimes of proactive policing. This is up from 808 last May, a 3% increase. Significant increases are DUIs (21%) and drunkenness (16%). One significant decrease is drug/narcotic violations (16%).

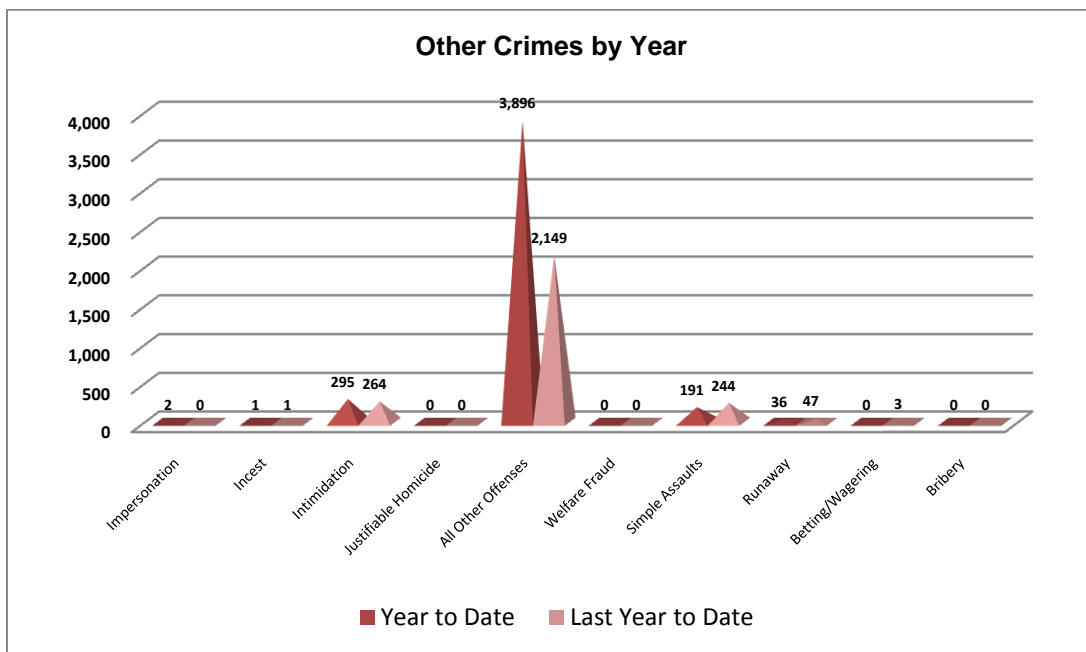


Other Crimes

There are 10 crimes that fall into the other crimes category. This month, there have been a total of 900 other crimes up from 668 last May, a 35% increase. All other offenses are significantly higher than last May by 46%. One noticeable decrease is a 39% decrease in simple assaults.

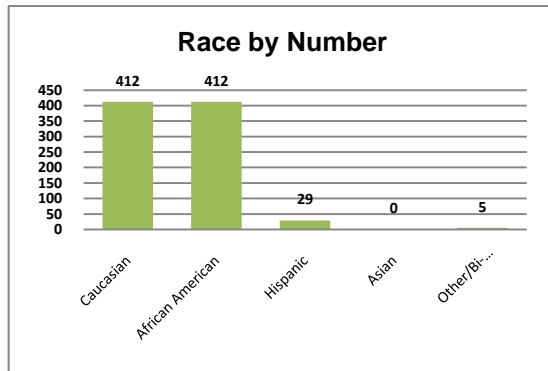
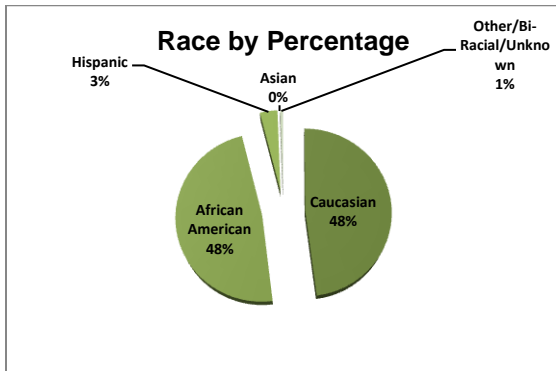
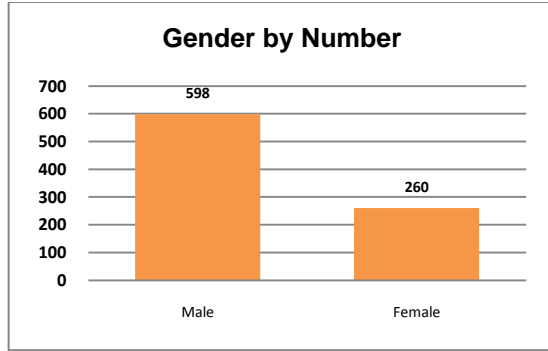
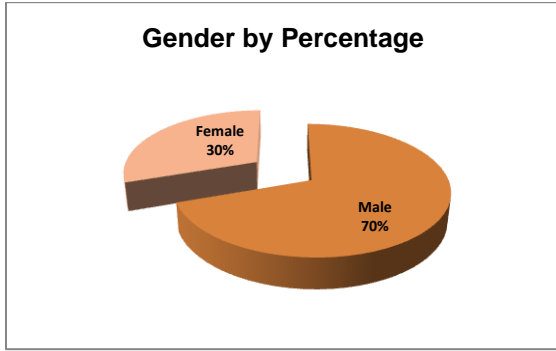


To date this year, there have been 4,421 other crimes, up from 2,708 last May, a 63% increase. The largest increase occurred, similar to above, in the all other offenses area ($n = 3,896$), which accounts for a 81% increase. Another increase includes intimidation by 12%. Simple assaults decreased by 22% and runaways decreased by 23%.

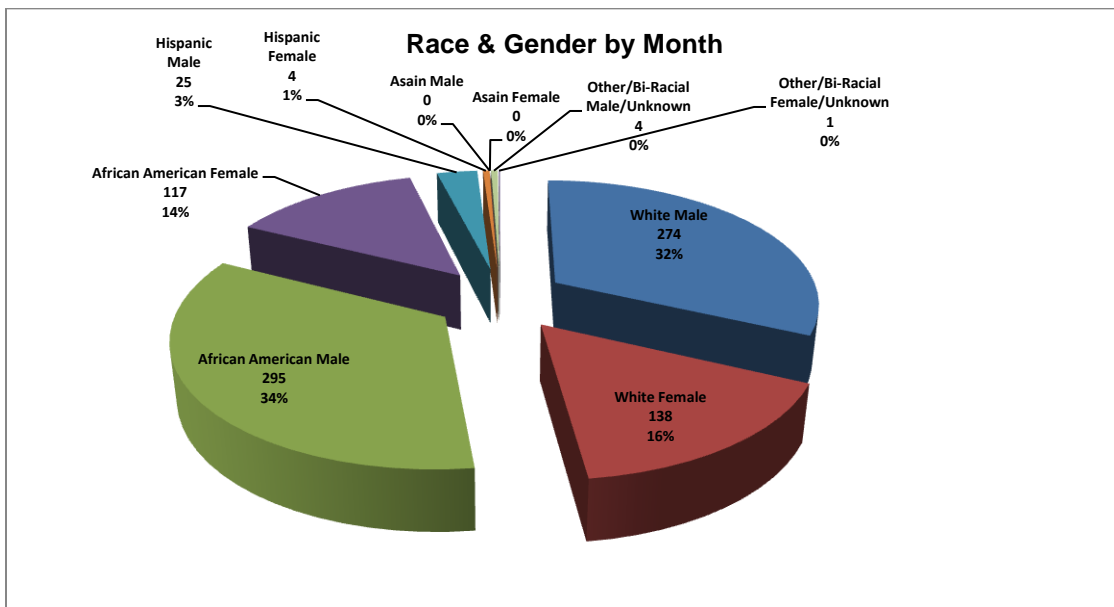


Arrest Demographics

This section will break down race and gender for the 858 arrests this month. The majority of offenders have been male ($n=598$), as opposed to female ($n=260$) and Caucasian ($n=412$) and African American ($n=412$) as opposed to Hispanic ($n=29$), Asian ($n=0$), or other/unknown/bi-racial ($n=5$).



African American males make up the majority of offenders for the month of May, totaling 34% ($n = 295$). Caucasian males account for 32% ($n = 274$) of the offenders this month. Caucasian females make up 16% ($n = 138$) and African American females make up 14% ($n = 117$). The remaining 4% is made up of Hispanic males and females. This distribution can be reviewed in the pie chart below.



*Although the chart indicates a 0% for Unknown/bi-racial/other ($n = 4$) arrestees, the percentage is so small that excel rounds it to 0%.

Emergency 911

Also known as Public Safety Answering Point (PSAP), the Emergency 911 Division is responsible for answering all calls from public for emergency assistance, accessing the needed information to best assist, and then assigning the most efficient and effective emergency response. In addition, this division is responsible for setting priority call dispatching to field units including Police, Fire, and EMS. Emergency 911 also maintains all records for radio logs, calls for service, and other emergency service data collections.

Calls by Type	This Month	This Month Last Year	YTD	Last YTD	Change By Month	Change YTD
Land Line	780	1,038	4,226	5,160	-25%	-18%
Cell Phone	3,212	3,419	15,831	17,192	-6%	-8%
Admin Lines	13,214	17,372	74,074	85,423	-24%	-13%
TOTALS	17,206	21,829	94,131	107,775	-21%	-13%

Calls by Agency	This Month	This Month Last Year	YTD	Last YTD	Change By Month	Change YTD
Jonesboro PD Calls	6,384	9,904	30,114	38,946	-36%	-23%
Craighead Cty Sheriff	1,089	1,427	4,888	6,812	-24%	-28%
Jonesboro Fire Dpt - dispatch	121	143	718	761	-15%	-6%
Jonesboro Fire Dpt - Med Asst	141	135	580	1,361	4%	-57%
Craighead Cty - Fire	47	41	283	351	15%	-19%
Craighead Cty - 1st Responder	87	91	313	391	-4%	-20%
Emerson Ambulance	272	234	1,187	1,090	16%	9%
Medic One	305	320	1,439	1,456	-5%	-1%
Air Evac	2	1	7	3	100%	133%
Coroner	3	2	13	10	50%	30%
ARK State Police	15	9	71	47	67%	51%
Jonesboro Animal Control	96	11	318	52	773%	512%
Wreckers Called	200	222	877	942	-10%	-7%
TOTALS	8,762	12,540	40,808	52,222	-30%	-22%

Calls by Municipality	This Month	This Month Last Year	YTD	Last YTD	Change By Month	Change YTD
Bay PD	97	231	543	862	-58%	-37%
Bono PD	234	262	998	1183	-11%	-16%
Brookland PD	211	281	1065	1279	-25%	-17%
Caraway PD	106	41	501	257	159%	95%
Cash PD	52	70	325	311	-26%	5%
Egypt PD	16	40	80	136	-60%	-41%
Lake City PD	119	135	619	554	-12%	12%
Monette PD	157	154	643	667	2%	-4%
TOTALS	992	1,214	4,774	5,249	-18%	-9%

Uniform Patrol Division

The UPD is responsible for responding to calls into the Emergency – 911 Division by civilians and are normally the first responders. Jonesboro is divided into 6 patrol districts. Officers from UPD are assigned to a district and work the same district every shift. In addition, when a Traffic Officer is not available, a UPD Officer will respond to traffic accidents and assist in directing traffic when necessary.

Incidents	This Month	This Month Last Year	YTD	Last YTD	Change By Month	Change YTD
Street Accidents	79	153	317	585	-48%	-46%
Private Property Accidents	42	64	183	253	-34%	-28%
Traffic Citations	843	753	4,324	3,201	12%	35%
DWI	33	27	130	111	22%	17%
Mis. Arrests	1,717	1,852	8,113	7,186	-7%	13%
Felony Arrests	132	178	694	649	-26%	7%
Value of Asstes Seized					N/C	N/C
Drug Arrests					N/C	N/C
Public Intoxication Arrests	7	5	58	48	40%	21%
Calls For Service	7,339	7,043	33,858	34,295	4%	-1%
Alarms	296	224	1,063	1,107	32%	-4%
Parking Citations	1	0	19	7	N/C	171%
Written Warnings	1,312	586	3,888	2,452	124%	59%
TOTALS	11,801	10,885	52,647	49,894	8%	6%
Patrol Miles	52,528	64,239	280,571	310,426	-18%	-10%
Hours Worked	9,938	10,108	46,018	48,706	-2%	-6%

Prowl

The Prowl unit is a uniformed street crimes unit specializing in criminal patrol, narcotics enforcement, gang investigation, and prostitution activity. The unit conducts directed patrols, investigates citizen complaints of street-level criminal activity, and directly assists the 2nd Judicial Drug Task Force. PROWL also assists any division within the Jonesboro Police Department at any time when needed.

Incidents	This Month	This Month Last Year	YTD	Last YTD	Change By Month	Change YTD
Street Accidents	0	0	0	1	N/C	-100%
Private Property Accidents	0	0	1	0	N/C	N/C
Traffic Citations	33	53	159	95	-38%	67%
DWI	0	0	1	1	N/C	0%
Mis. Arrests	51	291	460	514	-82%	-11%
Felony Arrests	23	55	123	189	-58%	-35%
Drug Arrests	19	55	121	174	-65%	-30%
Public Intoxication Arrests	0	0	0	0	N/C	N/C
Calls For Service	115	62	492	240	85%	105%
Alarms	0	0	0	0	N/C	N/C
Parking Citations	0	0	0	0	N/C	N/C
Written Warnings	41	30	133	62	37%	115%
Assists	0	0	0	0	N/C	N/C
TOTALS	282	546	1,490	1,276	-48%	17%
Value of Drugs Seized	\$4,750	\$10,494	\$34,623	\$68,519	-55%	-49%
Value of Asstes Seized	0	10,966	18,328	33,622	-100%	-45%
Patrol Miles	5,450	5,350	25,850	22,880	2%	13%

Criminal Investigative Division

The CID is responsible for conducting follow-up investigations into criminal acts reported to the Jonesboro Police Department. The primary goal is to collect and present evidence that conclusively leads to a successful arrest. Additionally, CID is charged with clearing additional crimes, recovering stolen property, preventing additional crimes, and gathering intelligence information.

Investigations	This Month	This Month Last Year	YTD	Last YTD	Change By Month	Change YTD
Criminal Investigations Assigned	84	110	394	510	-24%	-23%
Criminal Investigations Closed	82	95	429	408	-14%	5%
Cleared by Arrests	45	49	235	209	-8%	12%
Unfounded	9	12	42	59	-25%	-29%
Exceptionally Cleared	17	17	67	90	0%	-26%
Filed With Prosecutors Office	8	8	43	24	0%	79%
TOTALS	245	291	1210	1300	-16%	-7%

Crimes Against Persons	This Month	This Month Last Year	YTD	Last YTD	Change By Month	Change YTD
Criminal Investigations Assigned	23	22	92	116	5%	-21%
Criminal Investigations Closed	32	25	104	108	28%	-4%
Cleared by Arrests	19	14	70	67	36%	4%
Unfounded	1	4	4	15	-75%	-73%
Exceptionally Cleared	9	6	23	23	50%	0%
Filed With Prosecutors Office	3	1	7	3	200%	133%
TOTALS	87	72	300	332	21%	-10%

Property Crimes	This Month	This Month Last Year	YTD	Last YTD	Change By Month	Change YTD
Criminal Investigations Assigned	51	78	263	340	-35%	-23%
Criminal Investigations Closed	42	56	254	244	-25%	4%
Cleared by Arrests	24	32	153	135	-25%	13%
Unfounded	7	7	30	37	0%	-19%
Exceptionally Cleared	7	11	41	58	-36%	-29%
Filed With Prosecutors Office	4	6	30	14	-33%	114%
TOTALS	135	190	771	828	-29%	-7%

Crimes Against Children	This Month	This Month Last Year	YTD	Last YTD	Change By Month	Change YTD
Criminal Investigations Assigned	8	4	24	27	100%	-11%
Criminal Investigations Closed	5	5	29	26	0%	12%
Cleared by Arrests	2	3	12	8	-33%	50%
Unfounded	1	1	8	7	0%	14%
Exceptionally Cleared	1	0	3	4	N/C	-25%
Filed With Prosecutors Office	1	1	6	7	0%	-14%
TOTALS	18	14	82	79	29%	4%

Warrants

The Warrants Division is responsible for serving warrants, criminal summonses, and subpoenas that are issued by the District Court. On city court days, the Warrants Division provides a bailiff for court and a transport officer. In addition, this Division is responsible for transporting wanted persons arrested in other jurisdictions back to Jonesboro. The STEP program operates within this

division and is a grant-funded operation in which officers can get paid overtime to enforce the safety belt law.

Arrests	This Month	This Month Last Year	YTD	Last YTD	Change By Month	Change YTD
Misdemeanor	1057	686	5251	3817	54%	38%
Felony	1		5	3	N/C	67%
Total Arrests	1058	686	5256	3820	54%	38%

Warrants by Activity	This Month	This Month Last Year	YTD	Last YTD	Change By Month	Change YTD
Subpoenas	434	596	2332	2428	-27%	-4%
Commitments	6	5	22	17	20%	29%
Traffic Citations	3	1	14	2	200%	600%
Complaints		2		8	-100%	-100%
Assist					N/C	N/C
Alarms		1		1	-100%	-100%

Hours by Activity	This Month	This Month Last Year	YTD	Last YTD	Change By Month	Change YTD
SI Criminal	226.92	176	1044.59	825.67	29%	27%
Court	123	63.5	644.83	327.5	94%	97%
Prisoner Transport	28.67	107.17	136.01	373	-73%	-64%

Hours Worked	This Month	This Month Last Year	YTD	Last YTD	Change By Month	Change YTD
Regular Hours Worked	578	552.5	3008.5	2410	5%	25%
Overtime Hours Worked	5.25	18.75	20.75	51.16	-72%	-59%
TOTAL Hours Worked	583.25	571.25	3029.25	2461.16	2%	23%

Mileage	This Month	This Month Last Year	YTD	Last YTD	Change By Month	Change YTD
Total Mileage	3126	2441	14757	10885	28%	36%

STEP	This Month	This Month Last Year	YTD	Last YTD	Change By Month	Change YTD
DWI Arrest	1		3	3	N/C	0%
DUI Arrest					N/C	N/C
Traffic Citations	69	89	813.5	309	-22%	163%
Felony Arrests			1		N/C	N/C
Drug Arrests			1		N/C	N/C
Hours Worked	48.5	172.5	801.5	316.5	-72%	153%
Miles Driven	399	902	6019	3058	-56%	97%

Drug Task Force

The DTF is responsible for investigating major drug traffickers in the area, including all types of illegal drugs. They work closely with local, state, and federal agencies to eradicate drugs from the community.

INVESTIGATIONS	This Month	This Month Last Year	YTD	Last YTD	Change By Month	Change YTD
Opened	24	32	146	158	-25%	-8%
Closed	16	36	115	144	-56%	-20%
TOTAL	25	39	165	178	-36%	-7%

With Nexus to Jonesboro	This Month	This Month Last Year	YTD	Last YTD	Change By Month	Change YTD
Opened	22	36	125	167	-39%	-25%
Closed		0		0	N/C	N/C
TOTAL	22	36	125	167	-39%	-25%

Outside Jonesboro (No Known Nexus)	This Month	This Month Last Year	YTD	Last YTD	Change By Month	Change YTD
Opened	2	3	12	5	-33%	140%
Closed	0	0		0	N/C	N/C
TOTAL	2	3	12	5	-33%	140%

ASSISTANCE RENDERED	This Month	This Month Last Year	YTD	Last YTD	Change By Month	Change YTD
Assist to Outside Agencies	4	5	22	17	-20%	29%
Assist to Jonesboro UPD/CID	12	24	73	91	-50%	-20%

ARRESTS	This Month	This Month Last Year	YTD	Last YTD	Change By Month	Change YTD
Miscellaneous	6	16	31	50	-63%	-38%
Felony	20	42	193	187	-52%	3%
Marijuana	5	12	35	38	-58%	-8%
Cocaine	1	4	11	7	-75%	57%
Crack Cocaine	3	7	22	21	-57%	5%
Methamphetamine/ICE	8	7	46	39	14%	18%
LSD	0	0	0	0	N/C	N/C
Extasy (MDMA or Other Designer Drug)	0	1	1	4	-100%	-75%
Prescription	0	2	11	19	-100%	-42%
Opiates (Heroin,Opium)	0	4	0	4	-100%	-100%
Labs	1	1	15	14	0%	7%
All Other Drug Offenses	0	0	0	1	N/C	-100%

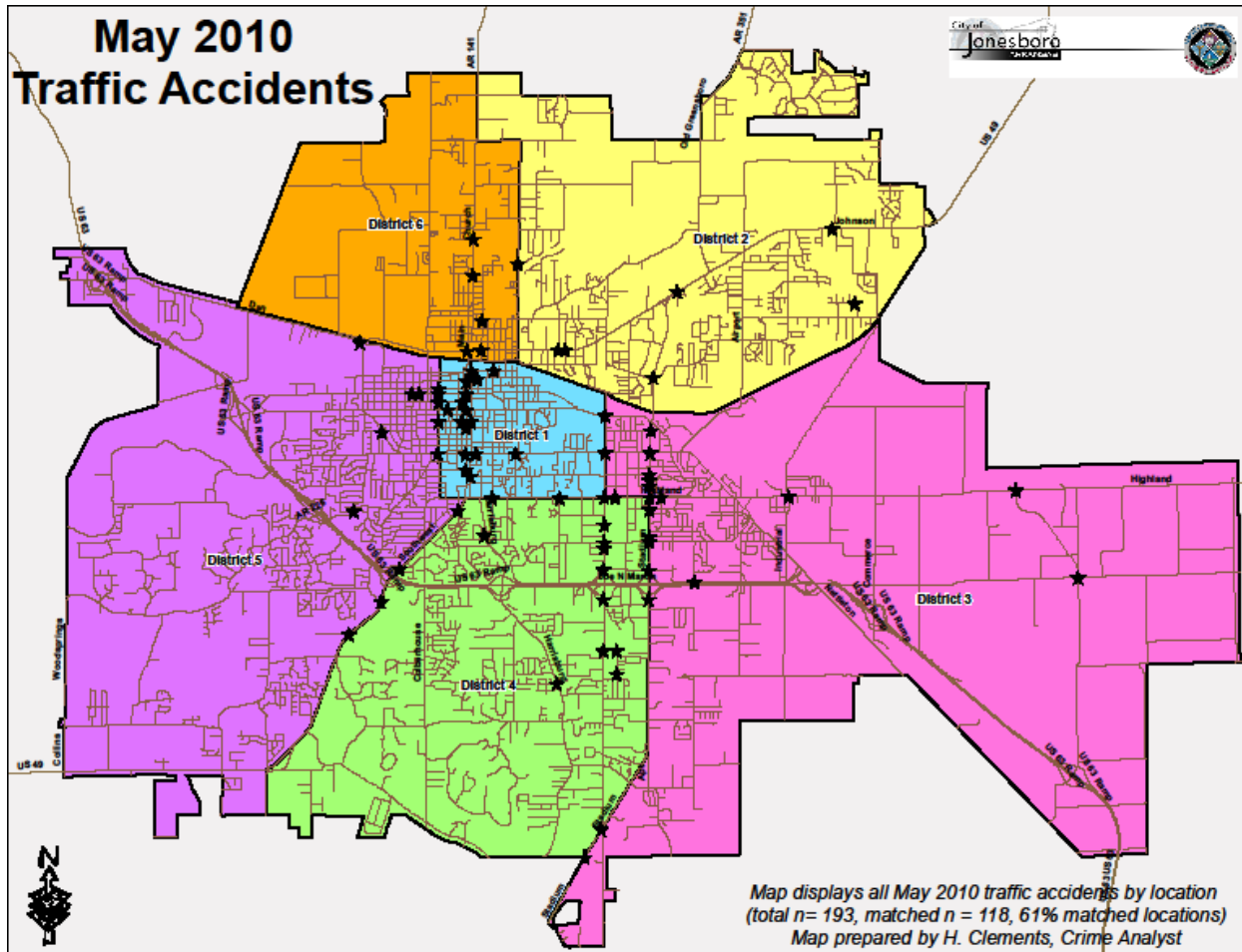
ASSET FORFEITURE	This Month	This Month Last Year	YTD	Last YTD	Change By Month	Change YTD
Vehicles Seized(No.)	0	1	1	4	-100%	-75%
Value of Assets Seized(Includes Value of vehicles)	\$0	\$4,500	\$14,357	\$25,145	-100%	-43%
Asset Value Awarded to Jonesboro PD (State)		\$0	\$0	\$0	N/C	N/C
Asset Value Awarded to Jonesboro PD (Federal)		\$0	\$0	\$0	N/C	N/C
Asset Value Awarded to Jonesboro PD (Total)		\$0	\$0	\$0	N/C	N/C

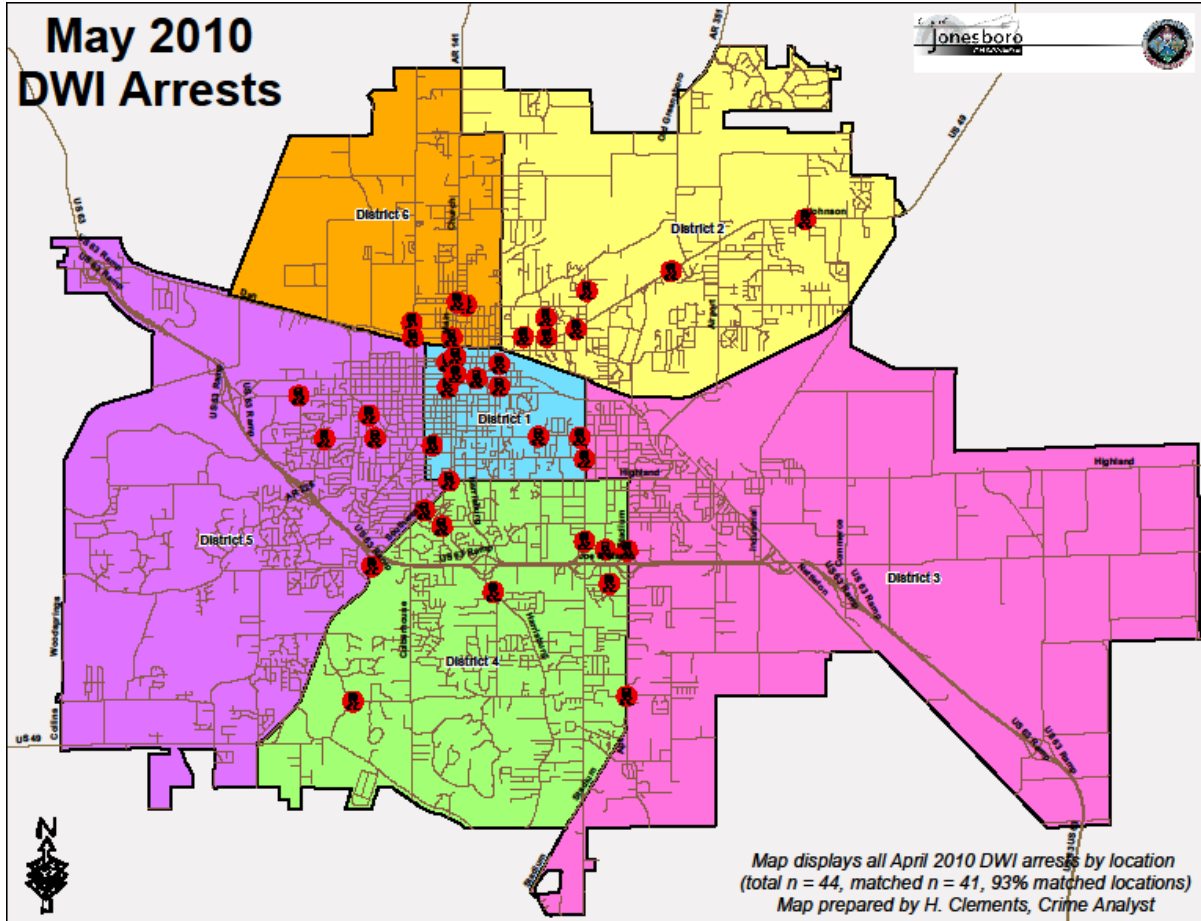
ARRESTS DEMOGRAPHY	This Month	This Month Last Year	YTD	Last YTD	Change By Month	Change YTD
White	8	19	71	93	-58%	-24%
African American	6	14	43	58	-57%	-26%
Latino	3	1	10	11	200%	-9%
Asian	0	0	1	0	N/C	N/C
Other/Bi-Racial	0	0	0	0	N/C	N/C
Male	15	23	103	109	-35%	-6%
Female	2	10	16	34	-80%	-53%
White Male	7	10	57	58	-30%	-2%
White Female	1	9	14	25	-89%	-44%
African American Male	5	13	43	45	-62%	-4%
African American Female	1	0	2	13	N/C	-85%
Latino Male	3	1	9	8	200%	13%
Latino Female	0	0	0	3	N/C	-100%
Asian Male	0	0	1	0	N/C	N/C
Asian Female	0	0	0	0	N/C	N/C
Other/Bi-Racial Male	0	0	0	0	N/C	N/C
Other/Bi-Racial Female	0	0	0	0	N/C	N/C

Traffic

Comprised of three motor units and three Chargers, the Traffic Enforcement Unit responds to traffic accidents and provides increased enforcement in particularly challenging areas. This unit also provides extra coverage for specific congestion problems and special events in the community. Last, they work details targeting specific issues, such as DWI enforcement and traffic safety checkpoints.

Incidents	This Month	This Month Last Year	YTD	Last YTD	Change By Month	Change YTD
Street Accidents	126	82	629	580	54%	8%
Private Property Accidents	35	32	174	202	9%	-14%
Traffic Citations	166	266	1552	1331	-38%	17%
DWI	5	8	22	19	-38%	16%
Mis. Arrests	20	21	98	119	-5%	-18%
Felony Arrests	5	1	12	7	400%	71%
Value of Asstes Seized	0	0	0	0	N/C	N/C
Drug Arrests	0	0	0	0	N/C	N/C
Public Intoxication Arrests	1	0	2	0	N/C	N/C
Calls For Service	246	189	1341	1152	30%	16%
Alarms	1	1	4	13	0%	-69%
Parking Citations	0	0	0	24	N/C	-100%
Written Warnings	193	2	468	10	9550%	4580%
TOTALS	798	602	4302	3457	33%	24%
Patrol Miles	6,131	5,339	27,691	24,593	15%	13%
Hours Worked	830.5	802.5	3892	4004.5	3%	-3%





Parking Enforcement

The Parking Enforcement Division is responsible for enforcing parking laws in the downtown area. This service provides a safe and convenient parking situation for the public.

CITATIONS ISSUED	This Month	This Month Last Year	YTD	Last YTD	Change By Month	Change YTD
Citations	67	68	258	370	-1%	-30%
Verbal Warnings	0	0	0	0	N/C	N/C

MINUTES BY ACTIVITY	This Month	This Month Last Year	YTD	Last YTD	Change By Month	Change YTD
Office	640	1,590	3,990	950	-60%	320%
Admin(Non-Office)	720	515	2,575	3,950	40%	-35%
Community	0	0	0	300	N/C	-100%
Training	0	0	0	0	N/C	N/C
Patrol	6,000	5,425	16,765	18,180	11%	-8%

Animal Control

The Animal Control Division is responsible for educating the public on safe and humane issues regarding animal treatment, enforcing all animal laws and ordinances, assisting the public in resolving animal issues, and protecting the safety and welfare of the citizens and animals in this community.

Incidents	This Month	This Month Last Year	YTD	Last YTD	Change By Month	Change YTD
Barking Complaints	10	12	45	31	-17%	45%
Bite Reports	12	21	35	42	-43%	-17%
Door Hangers	34	31	188	114	10%	65%
Welfare Checks	77	103	417	277	-25%	51%
Advised of Rights	328	229	1,230	1,199	43%	3%
Incident Reports	4	7	33	39	-43%	-15%
Gone on Arrival	45	133	200	238	-66%	-16%
Complaints	780	860	3,434	2,511	-9%	37%
Desk Complaints	989	900	4,723	3,634	10%	30%
Captured Dogs	138	109	668	530	27%	26%
Captured Cats	11	41	58	46	-73%	26%
Captured Wildlife	53	37	131	77	43%	70%
Chemical Captures	9	10	34	46	-10%	-26%
Traps	22	25	89	66	-12%	35%
Deceased Animals	84	160	411	487	-48%	-16%
Assist J.P.D.	8	9	41	17	-11%	141%
Assist C.S.O.	0	0	0	6	N/C	-100%
Public Relations	637	174	2,917	809	266%	261%
CITATIONS ISSUED	48	58	207	108	-17%	92%
WARNINGS ISSUED	50	33	236	79	52%	199%
Physical Arrests	0	2	2	7	-100%	-71%
City Warrants Served	2	3	6	10	-33%	-40%
County Warrants Served	0	0	0	0	N/C	N/C
Euthanized	89	76	276	305	17%	-10%
Euthanized for Humane Society	0	9	0	71	-100%	-100%
Deceased Animals Landfill lbs.	5,020	4,220	19,820	24,160	19%	-18%
Wildlife Euthanized	53	37	131	77	43%	70%
Sent to Rescue Centers	15	7	77	69	114%	12%
Adoptions	31	26	191	75	19%	155%
Miles Driven	8,854	8,730	42,129	49,639	1%	-15%

Fleet Maintenance

The Fleet Maintenance is responsible for all of the police vehicle maintenance upkeep, cleanliness, and purchasing. In addition, this Division handles most of the purchasing of equipment, supplies, and uniforms for all of the Police Department.

Repair Costs by Model Year	This Month	This Month Last Year	YTD	Last YTD	Change By Month	Change YTD
95-99	\$583.68	\$0.00	\$583.68	\$69.77	N/C	737%
2000	\$0.00	\$1,142.89	\$195.02	\$1,142.89	-100%	-83%
2001	\$245.26	\$0.00	\$312.03	\$0.00	N/C	N/C
2002	\$0.00	\$0.00	\$2,054.11	\$0.00	N/C	N/C
2003	\$0.00	\$0.00	\$11.23	\$139.14	N/C	-92%
2004	\$499.51	\$658.20	\$5,281.69	\$2,653.44	-24%	99%
2005	\$137.77	\$49.03	\$4,974.51	\$1,875.44	181%	165%
2006	\$1,380.04	\$1,151.77	\$16,772.90	\$5,019.99	20%	234%
2007	\$527.02	\$322.13	\$5,229.28	\$1,321.85	64%	296%
2008	\$171.99	\$60.26	\$1,385.96	\$169.75	185%	716%
2009	\$130.03	\$0.00	\$303.26	\$37.80	N/C	N/C
2010	\$0.00	n/a	\$0.00	n/a		
TOTALS	\$3,675.30	\$3,384.28	\$37,103.67	\$12,430.07	9%	198%

Routine Preventative Maintenance by Model Year	This Month	This Month Last Year	YTD	Last YTD	Change By Month	Change YTD
95-99	\$53.50	\$40.00	\$53.50	\$153.27	34%	-65%
2000	\$0.00	\$0.00	\$29.00	\$211.30	N/C	-86%
2001	\$0.00	\$20.00	\$40.00	\$1,046.96	-100%	-96%
2002	\$0.00	\$0.00	\$0.00	\$0.00	N/C	N/C
2003	\$20.00	\$0.00	\$235.37	\$749.25	N/C	-69%
2004	\$1,070.46	\$208.45	\$3,061.55	\$2,037.19	414%	50%
2005	\$314.50	\$147.30	\$1,918.26	\$2,945.56	114%	-35%
2006	\$1,519.04	\$1,398.40	\$6,710.16	\$6,493.64	9%	3%
2007	\$1,056.61	\$452.53	\$6,400.24	\$3,167.83	133%	102%
2008	\$0.00	\$26.50	\$1,376.66	\$253.00	-100%	444%
2009	\$80.00	\$318.20	\$304.01	\$1,199.47	N/C	N/C
2010	\$274.90	n/a	\$668.90	n/a		
TOTALS	\$4,389.01	\$2,611.38	\$20,797.65	\$18,257.47	68%	14%

Records

The Records Division is responsible for providing administrative and clerical support to the department. Major responsibilities include entering the accident and incident reports and tickets into the records database management system, assisting the general public for report requests, performing criminal backgrounds, serving as a switchboard at times, performing validations, and setting up and managing the payment plans out of court.

RECORDS	This Month	This Month Last Year	YTD	Last YTD	Change By Month	Change YTD
Incident/Arrest Reports Processed	1,289	1,139	6,021	4,979	13%	21%
Accident Reports Processed	297	193	1,185	1,147	54%	3%
Citations Processed	3,900	3,757	20,893	16,344	4%	28%
Warnings Processed	945	403	2,407	1,604	134%	50%
Backgrounds	18	1	82	27	1700%	204%
Fingerprints	64	91	469	519	-30%	-10%
Photos	0	0	7	5	N/C	40%
Accident Requests	111	100	518	585	11%	-11%
Accident Requests Online	159	141	753	770	13%	-2%
TOTALS	6,783	5,825	32,335	25,980	16%	24%

Professional Standards

The Office of Professional Standards, a unit within Administration, is charged with the compilation and updating of an extensive set of policies and procedures and providing a general

operations guideline and code of conduct for officers to follow. In the event that a member of the public does experience a negative interaction with an officer, mechanisms are in place for them to lodge a complaint. All complaints are reviewed and investigations completed in a timely manner.

	This Month	This Month Last Year	YTD	Last YTD	Change By Month	Change YTD
Opened (TOTAL)	7	3	31	66	133%	-53%
Closed	7	3	31	66	133%	-53%
Inquiries	6	3	29	61	100%	-52%
Formal Investigations	1	0	2	5	N/C	-60%
Sustained	5	2	23	45	150%	-49%
Not-Sustained	1	1	3	5	0%	-40%
Exhonerated	0	0	1	7	N/C	-86%
Unfounded	1	0	3	9	N/C	-67%