



JONESBORO POLICE DEPARTMENT

Monthly Report

April 2015

IN THIS REPORT

CRIME ANALYSIS	1
Total Crime	2
Crimes against Person	3
Property Crimes	4
Crimes of Proactive Policing	5
Other Crimes.....	5
Arrests Demographics	6
EMERGENCY 911	7
UPD	8
PROWL	9
CID	9
WARRANTS	10
DRUG TASK FORCE	11
TRAFFIC	12
ANIMAL CONTROL	13
FLEET MAINTENANCE	14
RECORDS	15
PROFESSIONAL STANDARDS	15

The purpose of the Jonesboro Police Department Monthly Report is to compile data into one integrated report for review, allowing for a seamless flow of information for better decision-making. After each department collates their monthly numbers and sends it to the Office of Crime Analysis, it is organized into sections of departmental data, analyzed and packaged, and finally disseminated to department heads, the Chief of Police, the City Mayor, and the City Council. Major sections include Crime Analysis, Emergency 911, Uniform Police Division, Prowl, Criminal Investigative Division, Warrants, Drug Task Force, Traffic, Animal Control, Fleet Maintenance, Records, and Professional Standards.

CRIME ANALYSIS

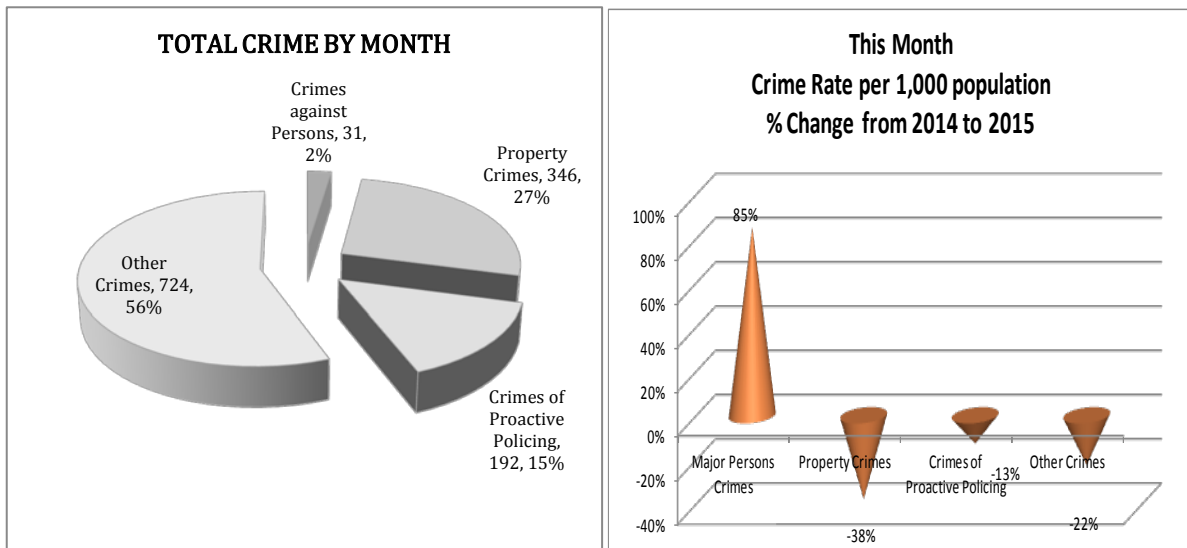
The Crime Analysis Unit consists of one Crime Analyst and one part-time Crime Analyst Assistant. The Crime Analyst position is responsible for the analysis and dissemination of crime activity data and the collection and maintenance of crime intelligence information for the city of Jonesboro. Additionally, the Office is charged with providing the department with current and accurate crime maps presenting crime activity data to audiences of interest and with responding to requests for crime data from civilians and departmental staff. Data exported from this division is used by field agents for more effective, efficient policing, by administration for improved staffing decisions, and by the Mayor's office for community decision making and enhanced public relations. The following section is broken down into Total Crime, Crimes against Persons, Property Crimes, Crimes of Proactive Policing, Other Crimes, Arrest Demographics, and Total Crime Monthly Comparison.

MONTHLY REPORT APRIL 2015

April 28, 2015

TOTAL CRIME

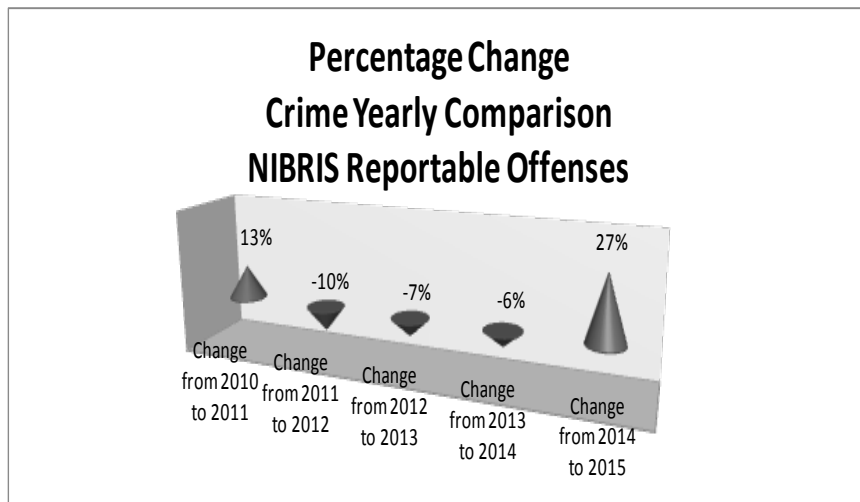
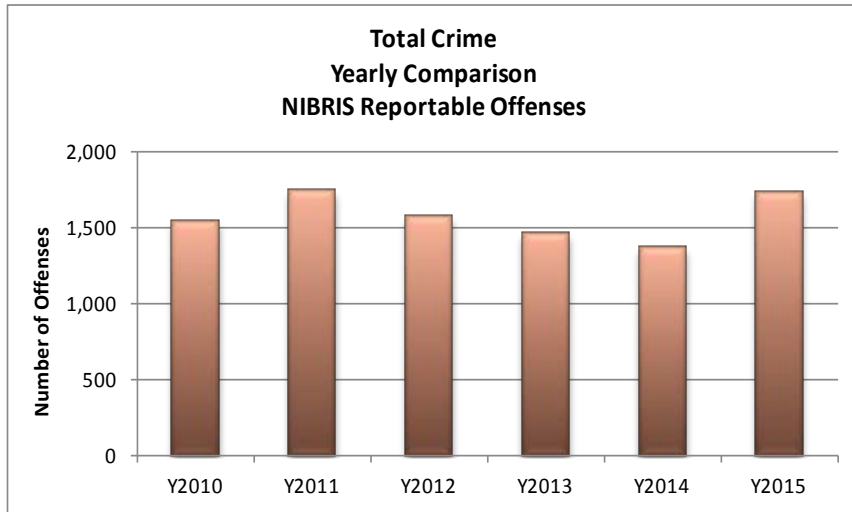
The crime activity for the month of April 2015 was at a total of 1,293 NIBRS reportable offenses, a 12% decrease, compared to the total number of offenses reported in April of the last year. With Jonesboro's population estimated to be equal to 72,958, the crime rate in April of this year was at 15 crimes per 1,000 population, compared to 20 crimes per 1,000 population last year¹, a - 25% decrease. As indicated on the pie chart below, Other Crimes absorb the majority, 56%, of this month's crime activity ($n = 724$). Property Crimes fall into a second place and comprise of 27% of all the crimes ($n = 346$). Following in third and fourth places are, respectively, Crimes of Proactive Policing, comprising of 15% ($n = 192$) of all the crimes, and Crimes against Persons, comprising of 2% ($n = 31$) of all the crimes this month.



¹ Note: Population numbers are based on 2012 & 2013 population estimate, where 2012 population estimate is 70,187.

April 28, 2015

The charts below depict frequencies of crime by year, percentage change from year to year, and year to date yearly comparison.



CRIMES AGAINST PERSONS

There are 9 crimes that make up this section. There were a total of 31 offenses in this area in April this year. That is a 71% increase over this month last year. There was 1 more Forcible rapes reported this year in April,

comparing to the last year. As demonstrated on the column chart below, the most significant change was in aggravated assault cases reported at 8 this month last year while this year there were a total of 25 incidents.

MONTHLY REPORT APRIL 2015

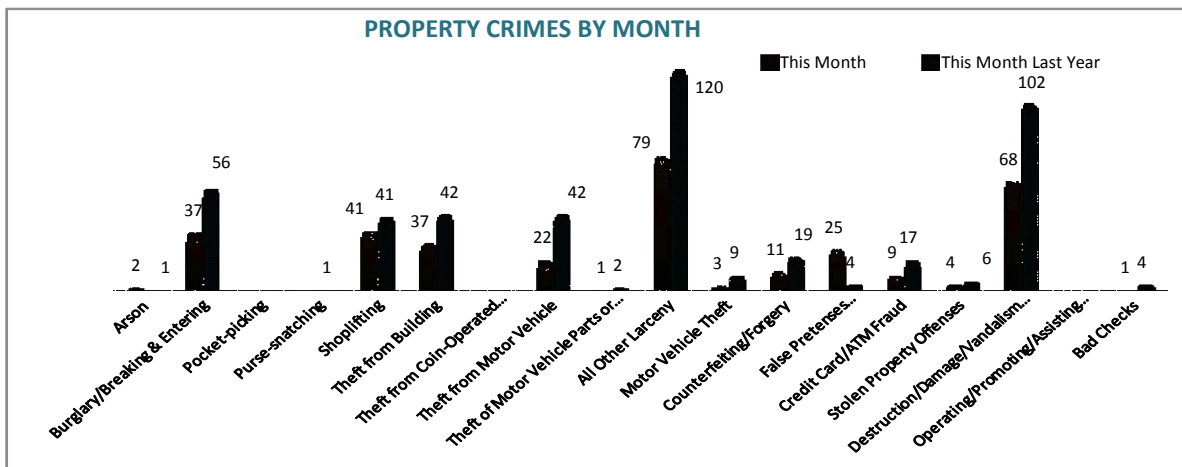
April 28, 2015



PROPERTY CRIMES

This section displays the criminal activity for 18 crimes, all against property. This month, there were a total of 346 Property Crimes, a 26% decrease, comparing to April of the last year. The data indicates change in Burglary/Breaking & Entering, down 34% (n= 37) compared to the 56 that took place this month last year, and in Destruction/Damage/Vandalism of

Property, down 33%. All Other Larceny has decreased 34%, dropping from 120 last year to 79 incidents this month. Theft from Motor Vehicle has also significantly decreased, down 48% this year. It should be noted that an increase in False Pretenses / Swindle / Confidence Game this month (n=25) compared to this month last year (n=4), which was a 525% increase

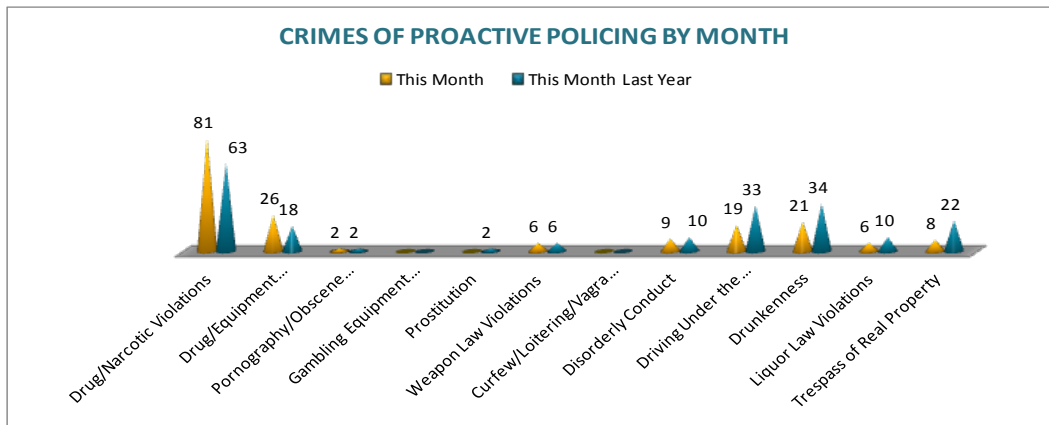


April 28, 2015

CRIMES OF PROACTIVE POLICING

Crimes of Proactive Policing are those crimes that result from police officers actively policing the streets to combat certain types of street crime. As chart below indicates, twelve crimes fall under this category. A total of 192 offenses have been reported this

month, down 4%, comparing to April of the last year. Drug/Narcotic Violations have increased by 29%. Trespass of Real Property has decreased by 64%. Driving under the Influence violations have decreased by -42%. There are no other major changes noted for the offenses in this category.



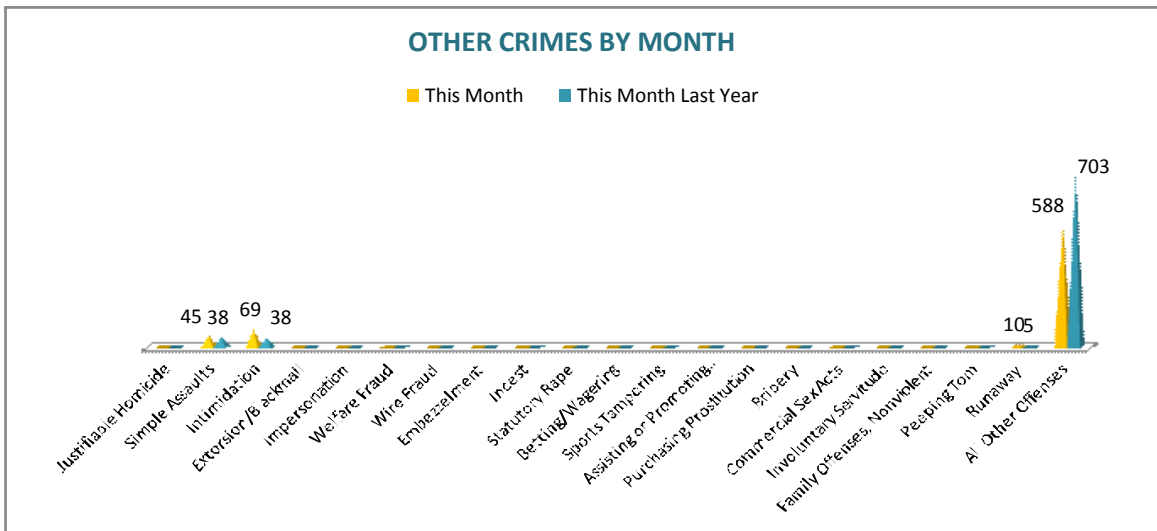
OTHER CRIMES

There are 21 crimes that fall into the Other Crimes category. This month, there have been a total of 620 Other Crimes reported, an -21% decrease, comparing to April of the last year. All Other Offenses have decreased by -

29%. Simple Assaults increased slightly by 18%. Runaways (n= 10), have increased by 5 incidents since this month last year. No other major changes are noted in this category of crimes this month.

MONTHLY REPORT APRIL 2015

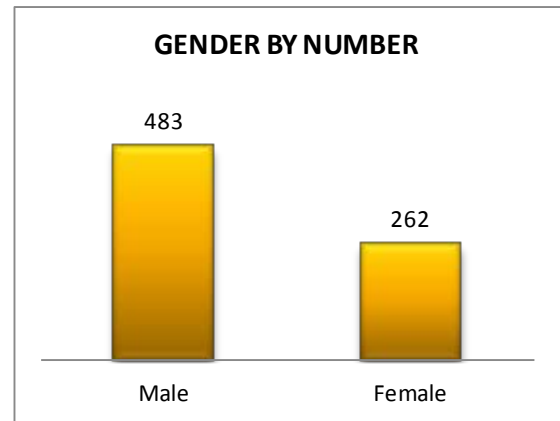
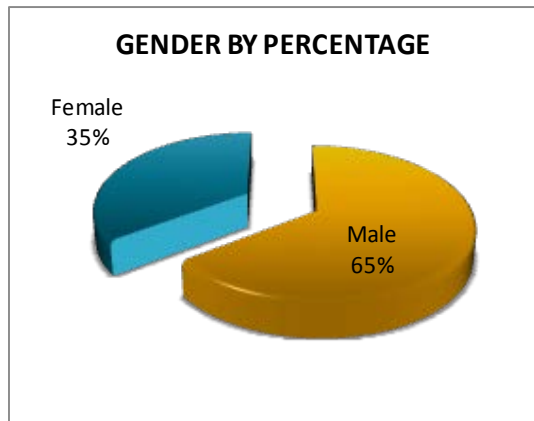
April 28, 2015



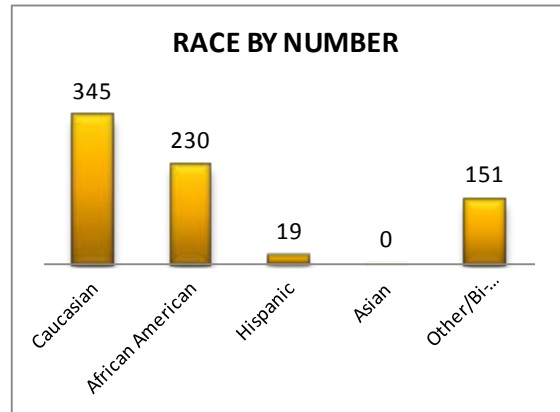
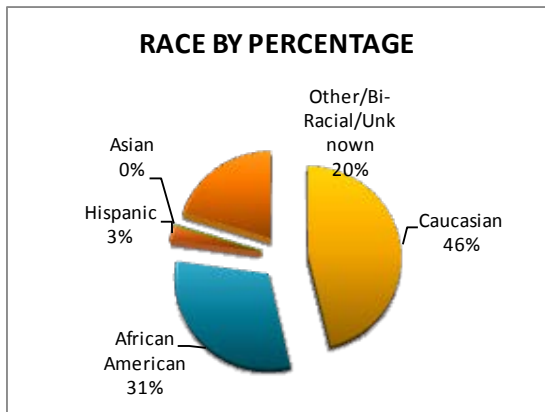
ARREST DEMOGRAPHICS

In April 2015, there were a total of 745 arrests carried out by the Jonesboro Police Department, down -8%, comparing with the last year's data for the month of April. This section breaks down this month's arrests by race and gender. The majority of arrestees, 65%, have been male ($n= 483$), as opposed

to 35% of female arrestees ($n= 262$). As for the racial/ethnic composition, the majority of arrestees have been Caucasian (46%) and African American (31%), comparing to Hispanic (3%), Asian (0%), or other/unknown/bi-racial (20%).

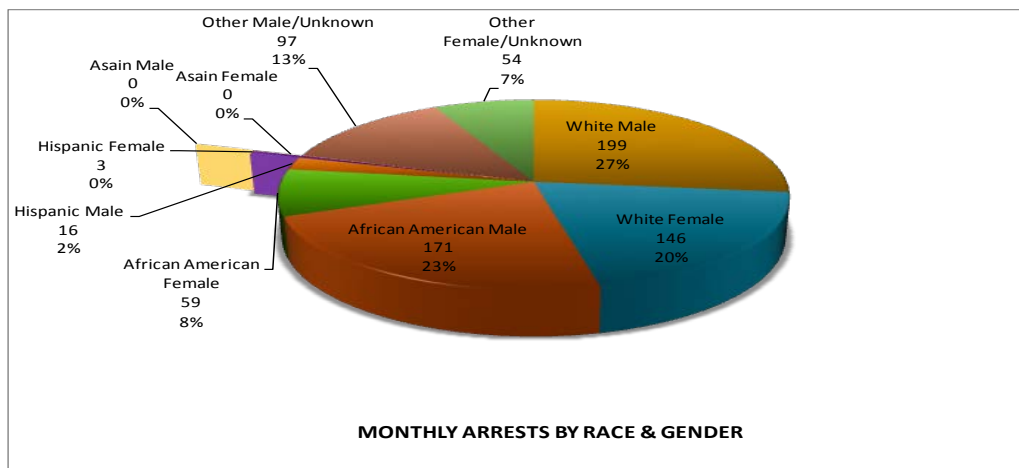


April 28, 2015



Caucasian males make up the majority, at 27% of arrestees this month, followed by, African American males 23%. Caucasian females make up 20%, while African American females make up 8% of all the arrestees this month. Hispanic males make up 2%, male of

Other/Unknown race represent 13% of arrestees, and female of Other/Unknown race make up for 7%, while Hispanic females, and Asian Males/Females make up 1% or less of all the arrestees this month.



EMERGENCY 911

Also known as Public Safety Answering Point (PSAP), the Emergency 911 Division is responsible for answering all calls from public for emergency assistance, accessing the needed information to best assist, and then assigning the most efficient and effective emergency

response. In addition, this division is responsible for setting priority call dispatching to field units including Police, Fire, and EMS. Emergency 911 also maintains all records for radio logs, calls for service, and other emergency service data collections.

MONTHLY REPORT APRIL 2015

April 28, 2015

Calls by Type	This Month	This Month Last Year	YTD	Last YTD	Change By Month	Change YTD
Land Line	739	911	3,192	3,463	-19%	-8%
Cell Phone	5,666	4,323	21,155	16,822	31%	26%
Admin Lines	14,541	13,409	57,873	53,237	8%	9%
TOTALS	20,946	18,643	82,220	73,522	12%	12%
Calls by Agency	This Month	This Month Last Year	YTD	Last YTD	Change By Month	Change YTD
Jonesboro PD Calls	6,485	8,111	25,112	29,437	-20%	-15%
Craighead Cty Sheriff	1,195	1,177	4,223	4,399	2%	-4%
Jonesboro Fire Dpt - dispatch	201	234	879	845	-14%	4%
Jonesboro Fire Dpt - Med Asst	145	139	628	591	4%	6%
Craighead Cty - Fire	44	33	199	279	33%	-29%
Craighead Cty - 1st Responder	127	101	469	432	26%	9%
Emerson Ambulance	363	246	1,323	1,149	48%	15%
Medic One	343	339	1,440	1,306	1%	10%
Air Evac	4	1	4	1	300%	300%
Coroner	4	1	13	15	300%	-13%
ARK State Police	7	10	30	35	-30%	-14%
Jonesboro Animal Control	2	10	7	18	-80%	-61%
Wreckers Called	212	190	896	911	12%	-2%
TOTALS	9,132	10,592	35,223	39,418	-14%	-11%
Calls by Municipality	This Month	This Month Last Year	YTD	Last YTD	Change By Month	Change YTD
Bay PD	126	114	386	482	11%	-20%
Bono PD	262	286	892	1206	-8%	-26%
Brookland PD	256	213	1052	800	20%	32%
Caraway PD	63	64	218	192	-2%	14%
Cash PD	113	149	435	654	-24%	-33%
Egypt PD	4	1	41	14	300%	193%
Lake City PD	148	96	478	400	54%	20%
Monette PD	126	101	413	478	25%	-14%
TOTALS	1,098	1,024	3,915	4,226	7%	-7%

UNIFORM PATROL DIVISION

The UPD is responsible for responding to calls into the Emergency – 911 Division by civilians and are normally the first responders. Jonesboro is divided into 6 patrol districts. Officers from UPD are assigned to a district and work the same

district every shift. In addition, when a Traffic Officer is not available, a UPD Officer will respond to traffic accidents and assist in directing traffic when necessary.

MONTHLY REPORT APRIL 2015

April 28, 2015

Incidents	This Month	This Month Last Year	YTD	Last YTD	Change By Month	Change YTD
Calls for Service	4271	8,111	15,498	29,436	-47%	-47%
Complaints	3663	4,857	14,269	18,950	-25%	-25%
Assists	1634	1,002	1,634	2,991	63%	-45%
Incident Reports	830	935	2,684	3,148	-11%	-15%
Street Accidents	76	60	398	305	27%	30%
Private Property Accidents	60	43	192	149	40%	29%
Traffic Stops	1836	3,254	8,097	10,486	-44%	-23%
Traffic Citations	384	567	1,511	1,875	-32%	-19%
Written Warnings	827	1,968	3,716	5,090	-58%	-27%
DWI	19	28	55	103	-32%	-47%
Mis. Arrests	382	460	1,510	1,632	-17%	-7%
Felony Arrests	81	115	334	392	-30%	-15%
Warrants Served	741	1,008	2,638	3,863	-26%	-32%
Alarms	361	360	1,482	1,607	0%	-8%
TOTALS	9,792	13,289	34,400	45,121	-26%	-24%

PROWL

The Prowl unit is a uniformed street crimes unit specializing in criminal patrol, narcotics enforcement, gang investigation, and prostitution activity. The unit conducts directed patrols,

investigates citizen complaints of street-level criminal activity, and directly assists the 2nd Judicial Drug Task Force. PROWL also assists any division within the Jonesboro Police Department at any time when needed.

Incidents	This Month	This Month Last Year	YTD	Last YTD	Change By Month	Change YTD
Street Accidents	0	0	0	0	N/C	N/C
Private Property Accidents	0	0	0	0	N/C	N/C
Traffic Citations	15	19	47	47	-21%	0%
DWI	0	0	1	0	N/C	N/C
Mis. Arrests	54	105	295	431	-49%	-32%
Felony Arrests	9	21	72	99	-57%	-27%
Drug Arrests	12	20	52	81	-40%	-36%
Public Intoxication Arrests	0	0	0	0	N/C	N/C
Calls For Service	58	38	237	180	53%	32%
Alarms	0	0	0	0	N/C	N/C
Parking Citations	0	0	0	0	N/C	N/C
Written Warnings	52	65	163	174	-20%	-6%
Assists	0	0	0	0	N/C	N/C
TOTALS	0	0	0	0	N/C	N/C
Value of Drugs Seized	\$ 1,160.00	\$ 3,610.00	\$ 65,832.00	\$ 12,335.00	-68%	434%
Value of Asstes Seized	\$210,000.00	\$ 756.00	\$212,281.00	\$ 3,093.00	27678%	6763%
Patrol Miles	0	0	0	0	N/C	N/C

MONTHLY REPORT APRIL 2015

April 28, 2015

CRIMINAL INVESTIGATIVE DIVISION

The CID is responsible for conducting follow-up investigations into criminal acts reported to the Jonesboro Police Department.

The primary goal is to collect and present evidence that conclusively leads to a successful arrest. Additionally, CID is charged with clearing additional crimes, recovering stolen property, preventing additional crimes, and gathering intelligence information.

Investigations	This Month	This Month Last Year	YTD	Last YTD	Change By Month	Change YTD
Criminal Investigations Assigned	131	107	141	107	22%	32%
Criminal Investigations Closed	173	74	94	74	134%	27%
Cleared by Arrests	64	37	53	37	73%	43%
Unfounded	10	12	16	12	-17%	33%
Exceptionally Cleared	16	15	16	15	7%	7%
Filed With Prosecutors Office	3	9	1	9	-67%	-89%
Crimes Against Persons	This Month	This Month Last Year	YTD	Last YTD	Change By Month	Change YTD
Criminal Investigations Assigned	38	32	23	32	19%	-28%
Criminal Investigations Closed	31	26	28	26	19%	8%
Cleared by Arrests	22	16	21	16	38%	31%
Unfounded	4	4	4	4	0%	0%
Exceptionally Cleared	5	3	2	3	67%	-33%
Filed With Prosecutors Office	0	3	1	3	-100%	-67%
Property Crimes	This Month	This Month Last Year	YTD	Last YTD	Change By Month	Change YTD
Criminal Investigations Assigned	73	67	102	67	9%	52%
Criminal Investigations Closed	55	45	54	45	22%	20%
Cleared by Arrests	42	19	30	19	121%	58%
Unfounded	3	8	11	8	-63%	38%
Exceptionally Cleared	9	12	13	12	-25%	8%
Filed With Prosecutors Office	1	6	0	6	-83%	-100%
Crimes Against Children	This Month	This Month Last Year	YTD	Last YTD	Change By Month	Change YTD
Criminal Investigations Assigned	6	5	4	5	20%	-20%
Criminal Investigations Closed	7	2	4	2	250%	100%
Cleared by Arrests	0	2	2	2	-100%	0%
Unfounded	3	0	1	0	N/C	N/C
Exceptionally Cleared	2	0	1	0	N/C	N/C
Filed With Prosecutors Office	2	0	0	0	N/C	N/C
	This Month	This Month Last Year	YTD	Last YTD	Change By Month	Change YTD
Miscellaneous Investigations Assigned	14	3	12	3	367%	300%
Miscellaneous Investigations Cleared	3	1	8	1	200%	700%
ICAC ACTIVITY	This Month	This Month Last Year	YTD	Last YTD	Change By Month	Change YTD
Forensic Exams	23	0	0	0	0	0
Computers	5	0	0	0	0	0
Phones	18	0	0	0	0	0
Other Devices	2	0	0	0	0	0
Cyber Tips Received	4	0	0	0	0	0
FINGERPRINTS	This Month	This Month Last Year	YTD	Last YTD	Change By Month	Change YTD
Rolled for the Public	142	153	400	424	-0.07	-0.06

WARRANTS

The Warrants Division is responsible for serving warrants, criminal summonses, and subpoenas that are issued by the District Court. On city court days, the Warrants Division provides a bailiff for

court and a transport officer. In addition, this Division is responsible for transporting wanted persons arrested in other jurisdictions back to Jonesboro. The STEP program operates within this

MONTHLY REPORT APRIL 2015

April 28, 2015

division and is a grant-funded operation to enforce the safety belt law.
in which officers can get paid overtime

Arrests	This Month	This Month Last Year	YTD	Last YTD	Change By Month	Change YTD
Misdemeanor	1	1065	#REF!	3792	-100%	#REF!
Felony	0	0	#REF!	0	N/C	N/C
Total Arrests	1	1065	#REF!	3792	-100%	#REF!
Warrants by Activity	This Month	This Month Last Year	YTD	Last YTD	Change By Month	Change YTD
Subpoenas	444	388	#REF!	2325	14%	#REF!
Commitments	8	2	#REF!	15	300%	#REF!
Traffic Citations	1026	6	#REF!	8	17000%	#REF!
Complaints	0	4	#REF!	9	-100%	#REF!
Assist	0	0	#REF!	2	N/C	#REF!
Alarms	1	0	#REF!	0	N/C	N/C
Hours by Activity	This Month	This Month Last Year	YTD	Last YTD	Change By Month	Change YTD
SI Criminal	176.5	248	#REF!	855.15	-29%	#REF!
Court	117	120	#REF!	472.17	-3%	#REF!
Prisoner Transport	65.5	27	#REF!	117.17	143%	#REF!
Hours Worked	This Month	This Month Last Year	YTD	Last YTD	Change By Month	Change YTD
Regular Hours Worked	649	639.5	#REF!	2431.5	1%	#REF!
Overtime Hours Worked	13	2	#REF!	12.8	550%	#REF!
TOTAL Hours Worked	662	641.5	#REF!	2444.3	3%	#REF!
Mileage	This Month	This Month Last Year	YTD	Last YTD	Change By Month	Change YTD
Total Mileage	4070	3336	#REF!	12026	22%	#REF!
STEP	This Month	This Month Last Year	YTD	Last YTD	Change By Month	Change YTD
DWI Arrest	0	0	#REF!	0	N/C	N/C
DUI Arrest	0	0	#REF!	0	N/C	N/C
Traffic Citations	0	0	#REF!	125	N/C	#REF!
Felony Arrests	0	0	#REF!	1	N/C	#REF!
Drug Arrests	0	0	#REF!	0	N/C	N/C
	0	0	0	0		
STEP TOTALS	0	0	#REF!	126	N/C	#REF!
STEP Hours Worked	0	0	#REF!	135	N/C	#REF!
STEP Miles Driven	0	0	#REF!	776	N/C	#REF!

DRUG TASK FORCE

The DTF is responsible for investigating major drug traffickers in the area, including all types of illegal drugs.

The DTF works closely with local, state, and federal agencies to eradicate drugs from the community.

INVESTIGATIONS	This Month	This Month Last Year	YTD	Last YTD	Change By Month	Change YTD
Opened	36	49	131	112	-27%	17%
Closed	23	0	96	56	N/C	71%
TOTAL	36	49	131	112	-27%	17%
With Nexus to Jonesboro	This Month	This Month Last Year	YTD	Last YTD	Change By Month	Change YTD
Opened	32	49	141	100	-35%	41%
Closed	0	0	0	0	N/C	N/C
TOTAL	32	49	141	100	-35%	41%

MONTHLY REPORT APRIL 2015

April 28, 2015

Outside Jonesboro (No Known Nexus)	This Month	This Month Last Year	YTD	Last YTD	Change By Month	Change YTD
Opened	2	0	2	0	N/C	N/C
Closed	0	0	0	0	N/C	N/C
TOTAL	2	0	2	0	N/C	N/C
ASSISTANCE RENDERED	This Month	This Month Last Year	YTD	Last YTD	Change By Month	Change YTD
Assist to Outside Agencies	0	0	0	4	N/C	-100%
Assist to Jonesboro UPD/CID	11	3	28	20	267%	40%
ARRESTS	This Month	This Month Last Year	YTD	Last YTD	Change By Month	Change YTD
Miscellaneous	22	17	68	42	29%	62%
Felony	77	38	209	130	103%	61%
Marijuana	17	2	39	9	750%	333%
Cocaine	3	0	4	2	N/C	100%
Crack Cocaine	3	2	9	10	50%	-10%
Methamphetamine/ICE	40	13	112	41	208%	173%
LSD	0	0	0	0	N/C	N/C
Extasy (MDMA or Other Designer Drug)	0	0	0	1	N/C	-100%
Prescription	4	0	15	9	N/C	67%
Opiates (Heroin, Opium)	0	0	1	0	N/C	N/C
Labs	0	0	0	0	N/C	N/C
All Other Drug Offenses	27	11	63	31	145%	103%
ASSET FORFEITURE	This Month	This Month Last Year	YTD	Last YTD	Change By Month	Change YTD
Vehicles Seized (No.)	\$1.00	\$0.00	\$2.00	\$1.00	N/C	100%
Value of Assets Seized(Includes Value of vehicles)	\$13,511.00	\$0.00	\$37,121.00	\$5,894.00	N/C	530%
Asset Value Awarded to Jonesboro PD (State)	0	0	0	0	N/C	N/C
Asset Value Awarded to Jonesboro PD (Federal)	0	0	0	0	N/C	N/C
Asset Value Awarded to Jonesboro PD (Total)	0	0	0	0	N/C	N/C
ARRESTS DEMOGRAPHICS	This Month	This Month Last Year	YTD	Last YTD	Change By Month	Change YTD
White	27	22	83	65	23%	28%
African American	14	0.5	49	20	2700%	145%
Latino	0	0	0	2	N/C	-100%
Asian	0	0	0	0	N/C	N/C
Other/Bi-Racial	0	0	0	0	N/C	N/C
Male	29	18	102	63	61%	62%
Female	11	9	41	21	22%	95%
White Male	18	13	56	44	38%	27%
White Female	9	9	36	18	0%	100%
African American Male	12	5	44	16	140%	175%
African American Female	2	0	5	3	N/C	67%
Latino Male	0	0	0	2	N/C	-100%
Latino Female	0	0	0	0	N/C	N/C
Asian Male	0	0	0	0	N/C	N/C
Asian Female	0	0	0	0	N/C	N/C
Other/Bi-Racial Male	0	0	0	0	N/C	N/C
Other/Bi-Racial Female	0	0	0	0	N/C	N/C

TRAFFIC

The Traffic Enforcement Unit responds to traffic accidents and provides increased enforcement in particularly challenging areas. This unit also provides extra coverage for specific congestion

problems and special events in the community. Last, they work details targeting specific issues, such as DWI enforcement and traffic safety checkpoints.

MONTHLY REPORT APRIL 2015

April 28, 2015

Incidents	This Month	This Month Last Year	YTD	Last YTD	Change By Month	Change YTD
Street Accidents	149	141	542	543	6%	0%
Private Property Accidents	33	49	150	176	-33%	-15%
Traffic Citations	150	215	505	552	-30%	-9%
DWI	1	0	4	9	N/C	-56%
Mis. Arrests	3	18	41	58	-83%	-29%
Felony Arrests	0	0	0	3	N/C	-100%
Drug Arrests	0	0	0	0	N/C	N/C
Public Intoxication Arrests	0	0	0	0	N/C	N/C
Calls For Service	131	90	442	598	46%	-26%
Alarms	0	0	0	0	N/C	N/C
Parking Citations	0	0	0	0	N/C	N/C
Written Warnings	193	306	557	1123	-37%	-50%
TOTALS	660	819	2241	3062	-19%	-27%
Value of Asstes Seized	\$ -	\$ -	\$ -	\$ -	N/C	N/C
Patrol Miles	6,039	5,683	20,984	21,023	6%	0%
Hours Worked	1034	936.5	3759.5	3865.5	10%	-3%

ANIMAL CONTROL

The Animal Control Division is responsible for educating the public on safe and humane issues regarding animal treatment, enforcing all animal laws and ordinances, assisting the public in resolving animal issues, and protecting

the safety and welfare of the citizens and animals in this community.

Incident/Service	This Month	This Month Last Year	YTD	Last YTD	Change By Month	Change YTD
Barking Complaints	15	12	35	28	25%	25%
Bite Reports	4	2	22	14	100%	57%
Door Hangers	63	58	225	239	9%	-6%
Welfare Checks	83	83	264	225	0%	17%
Advised of Rights	1202	1050	3880	3958	14%	-2%
Incident Reports	5	3	16	13	67%	23%
Gone on Arrival	85	62	262	295	37%	-11%
Complaints	788	887	2619	3462	-11%	-24%
Desk Complaints	2015	1603	6030	5713	26%	6%
Captured Dogs	198	157	525	577	26%	-9%
Captured Cats	5	40	26	84	-88%	-69%
Captured Wildlife	51	21	94	47	143%	100%
Chemical Captures	3	2	6	4	50%	50%
Traps	66	35	151	82	89%	84%
Deceased Animals	110	86	403	253	28%	59%
Assist J.P.D.	3	10	30	23	-70%	30%
Assist C.S.O.	9	13	16	29	-31%	-45%
Public Relations	435	309	1343	1511	41%	-11%

MONTHLY REPORT APRIL 2015

April 28, 2015

Incident/Service	This Month	This Month Last Year	YTD	Last YTD	Change By Month	Change YTD
CITATIONS ISSUED	95	72	256	240	32%	7%
WARNINGS ISSUED	131	162	466	516	-19%	-10%
Physical Arrests	14	49	27	80	-71%	-66%
City Warrants Served	14	49	35	82	-71%	-57%
County Warrants Served	0	0	0	2	N/C	-100%
Felony Bench Warrants	0	0	0	0	N/C	N/C
Euthanized	56	65	200	260	-14%	-23%
Deceased Animals Landfill lbs.	2460	2680	9180	9360	-8%	-2%
Wildlife Euthanized	51	21	94	47	143%	100%
Sent to Rescue Centers	4	15	27	47	-73%	-43%
Adoptions	55	34	151	175	62%	-14%
Miles Driven	10611	10361	37852	33302	2%	14%

FLEET MAINTNANCE

The Fleet Maintenance is responsible for all of the police vehicle maintenance upkeep, cleanliness, and purchasing. In

addition, this Division handles most of the purchasing of equipment, supplies, and uniforms for all of the Police Department.

Repair Costs by Model Year	This Month	This Month Last Year	YTD	Last YTD	Change By Month	Change YTD
95-99	\$0.00	\$0.00	\$0.00	\$0.00	N/C	N/C
2000	\$0.00	\$2,068.09	\$0.00	\$2,068.09	-100%	-100%
2001	\$0.00	\$0.00	\$0.00	\$0.00	N/C	N/C
2002	\$0.00	\$0.00	\$0.00	\$0.00	N/C	N/C
2003	\$168.26	\$0.00	\$168.26	\$0.00	N/C	N/C
2004	\$0.00	\$0.00	\$475.51	\$0.00	N/C	N/C
2005	\$176.58	\$0.00	\$176.58	\$0.00	N/C	N/C
2006	\$1,073.46	\$3,528.57	\$4,500.79	\$5,652.07	-70%	-20%
2007	\$1,517.66	\$774.23	\$5,927.11	\$3,460.69	96%	71%
2008	\$466.24	\$1,228.54	\$931.61	\$7,126.52	-62%	-87%
2009	\$1,732.42	\$631.67	\$3,763.35	\$1,853.47	174%	103%
2010	\$0.00	\$0.00	\$347.45	\$0.00	N/C	N/C
2011	\$1,144.27	\$11.66	\$2,189.57	\$346.27	9714%	532%
2012	\$11.61	\$0.00	\$11.61	\$0.00	N/C	N/C
2013	\$0.00	\$0.00	\$1,000.00	\$0.00	N/C	N/C
2014	\$175.95	\$256.29	\$700.56	\$256.29	-31%	173%
2015	\$0.00	\$0.00	\$0.00	\$0.00	N/C	N/C
Totals	\$ 6,466.45	\$ 8,499.05	\$ 20,192.40	\$ 20,763.40	-24%	-3%
Routine Preventative Maintenance by Model Year	This Month	This Month Last Year	YTD	Last YTD	Change By Month	Change YTD
95-99	\$ -	\$ -	\$ -	\$ -	N/C	N/C
2000	\$ -	\$ -	\$ 12.00	\$ -	N/C	N/C
2001	\$ -	\$ -	\$ -	\$ -	N/C	N/C
2002	\$ -	\$ -	\$ -	\$ -	N/C	N/C
2003	\$ 29.00	\$ -	\$ 49.00	\$ 40.00	N/C	23%
2004	\$ 49.00	\$ 20.00	\$ 517.01	\$ 20.00	145%	2485%
2005	\$ 100.00	\$ 24.50	\$ 120.00	\$ 24.50	308%	390%
2006	\$ 994.03	\$ 238.00	\$ 1,571.03	\$ 1,681.55	318%	-7%
2007	\$ 222.50	\$ 258.00	\$ 1,209.18	\$ 1,439.40	-14%	-16%
2008	\$ 16.30	\$ 696.77	\$ 247.19	\$ 783.27	-98%	-68%
2009	\$ 104.50	\$ 525.95	\$ 1,243.07	\$ 1,056.71	-80%	18%
2010	\$ 20.00	\$ 20.00	\$ 1,115.98	\$ 20.00	0%	5480%
2011	\$ 443.35	\$ 1,413.90	\$ 3,025.55	\$ 2,799.18	-69%	8%
2012	\$ 403.61	\$ -	\$ 412.61	\$ 60.00	N/C	588%
2013	\$ 20.00	\$ -	\$ 69.00	\$ 40.00	N/C	73%
2014	\$ 603.00	\$ 20.00	\$ 1,631.55	\$ 1,613.55	2915%	1%

MONTHLY REPORT APRIL 2015

April 28, 2015

RECORDS

The Records Division is responsible for providing administrative and clerical support to the department. Major responsibilities include entering the accident and incident reports and tickets into the records database management system, assisting the

general public for report requests, performing criminal backgrounds, serving as a switchboard at times, performing validations, and setting up and managing the payment plans out of court.

RECORDS	This Month	This Month Last Year	YTD	Last YTD	Change By Month	Change YTD
Incident/Arrest Reports Processed	1232	1148	3463	3536	7%	-2%
Accident Reports Processed	225	292	718	704	-23%	2%
Citations Processed	2688	2899	8523	10448	-7%	-18%
Warnings Processed	864	1419	2829	3202	-39%	-12%
Backgrounds	15	10	32	29	50%	10%
Fingerprints	114	0	303	0	N/C	N/C
Photos	0	0	0	1	N/C	-100%
Accident Requests	81	82	217	229	-1%	-5%
Accident Requests Online	150	114	506	384	32%	32%

PROFESSIONAL STANDARDS

The Office of Professional Standards, a unit within Administration, is charged with the compilation and updating of an extensive set of policies and procedures and providing a general operations guideline and code of conduct for officers to follow. In the

event that a member of the public does experience a negative interaction with an officer, mechanisms are in place for them to lodge a complaint. All complaints are reviewed and investigations completed in a timely manner.

Professional Standards	This Month	This Month Last Year	YTD	Last YTD	Change By Month	Change YTD
Opened (TOTAL)	9	11	25	27	-18%	-7%
Closed	8	11	24	27	-27%	-11%
Inquiries	7	7	17	21	0%	-19%
Formal Investigations	1	0	7	2	N/C	250%
Sustained	5	2	11	12	150%	-8%
Not-Sustained	2	1	7	5	100%	40%
Exonerated	0	0	2	1	N/C	100%
Unfounded	1	8	4	10	-88%	-60%

END OF REPORT

April 28, 2015



Contact Information

Brandon Perry, Crime Analyst | BA Criminology, BA Sociology, CPLE, TCLE | Office of Crime Analysis and Criminal Intelligence Jonesboro
Police Department | 1001 S. Caraway | Jonesboro, AR

[|bperry@jonesboro.org](mailto:bperry@jonesboro.org) | Office: (870) 933-4614 ext. 2195 | www.jonesboropolice.com
