

JONESBORO POLICE DEPARTMENT

Monthly Report

June 2012

Office of Crime Analysis & Criminal Intelligence
410 W Washington Ave
Jonesboro, AR 72401
Basia Combs, Crime Analyst

IN THIS REPORT

CRIME ANALYSIS	1
Total Crime	2
Crimes against Person	3
Property Crimes	4
Crimes of Proactive Policing	5
Other Crimes.....	6
EMERGENCY 911	7
UPD	8
PROWL	9
CID	10
WARRANTS	11
DRUG TASK FORCE	12
TRAFFIC	13
Maps	14
PARKING ENFORCEMENT	15
ANIMAL CONTROL	15
FLEET MAINTENANCE	16
RECORDS	17
PROFESSIONAL STANDARDS	18

The purpose of the Jonesboro Police Department Monthly Report is to compile data into one integrated report for review, allowing for a seamless flow of information for better decision-making. After each department collates their monthly numbers and sends it to the Office of Crime Analysis, it is organized into sections of departmental data, analyzed and packaged, and finally disseminated to department heads, the Chief of Police, the City Mayor, and the City Council. Major sections include Crime Analysis, Emergency 911, Uniform Police Division, Prowl, Criminal Investigative Division, Warrants, Drug Task Force, Traffic, Parking Enforcement, Animal Control, Fleet Maintenance, Records, and Professional Standards.

CRIME ANALYSIS

The Crime Analysis division consists of one Crime Analyst and one part-time Crime Analyst Assistant. The Crime Analyst position is responsible for the analysis and dissemination of crime activity data and the collection and maintenance of crime intelligence information for the city of Jonesboro. Additionally, the Crime Analyst is charged with providing the department with current and accurate crime maps, presenting crime activity data to audiences of interest, and responding to requests for crime data from civilians and departmental staff. Data exported from this division is used by field agents for more effective, efficient policing, administration for improved staffing decisions, and the Mayor's office for community decision making and enhanced public relations. The following section is broken down into Total Crime, Crimes against Persons, Property Crimes, Crimes of Proactive Policing, Other Crimes, Arrest Demographics, Total Crime Monthly Comparison, and Next Month Predictions.

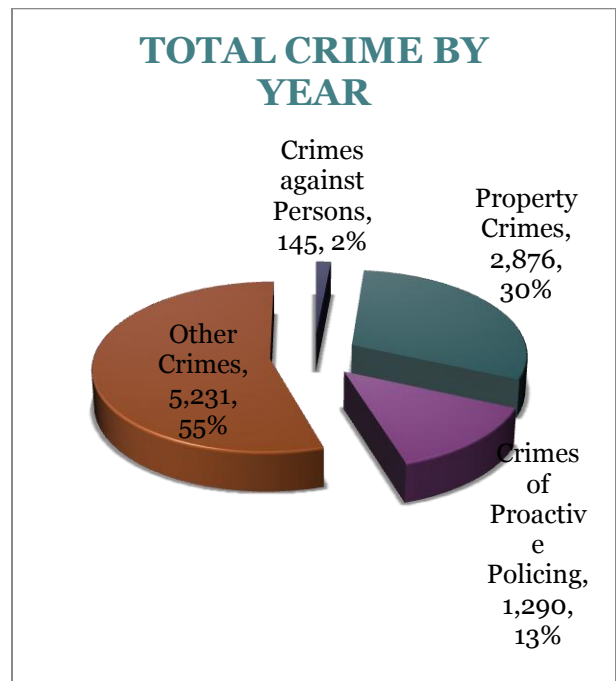
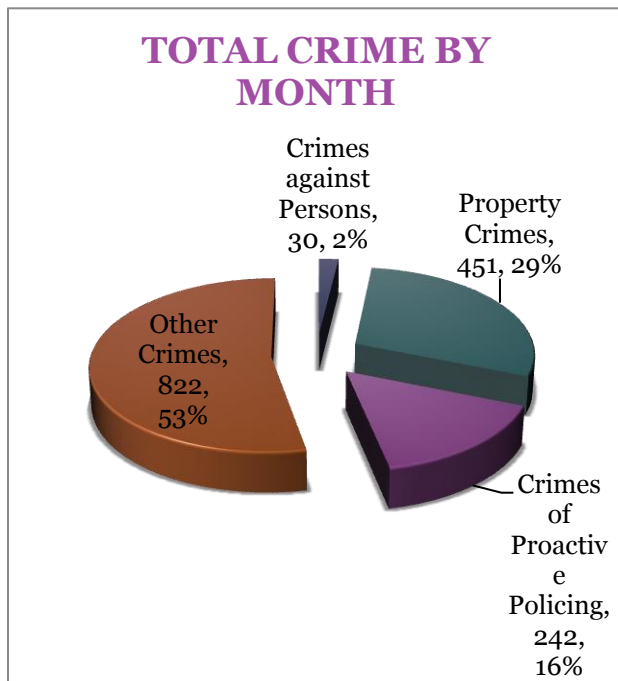
MONTHLY REPORT June 2012

July 10, 2012

TOTAL CRIME

The crime activity for the month of May 2012 was at a total of 1,545 NIBRIS reportable offenses, a 8% decrease, comparing to a total of offenses in June last year. With Jonesboro population equal to 67,351, the crime rate was at 23 crimes per 1,000 population for the month of May this year, comparing to 26 crimes per 1,000 population last year¹, a 13% decrease. As indicated on a pie chart below, Other Crimes absorb the majority, 53%, of this month's crime activity ($n = 822$). Property crimes fall into a second place and comprise of 29% of all the crimes ($n = 451$). Following in third and fourth places are crimes of proactive policing at 16% ($n = 242$) and crimes against persons at 2% ($n = 30$), respectively.

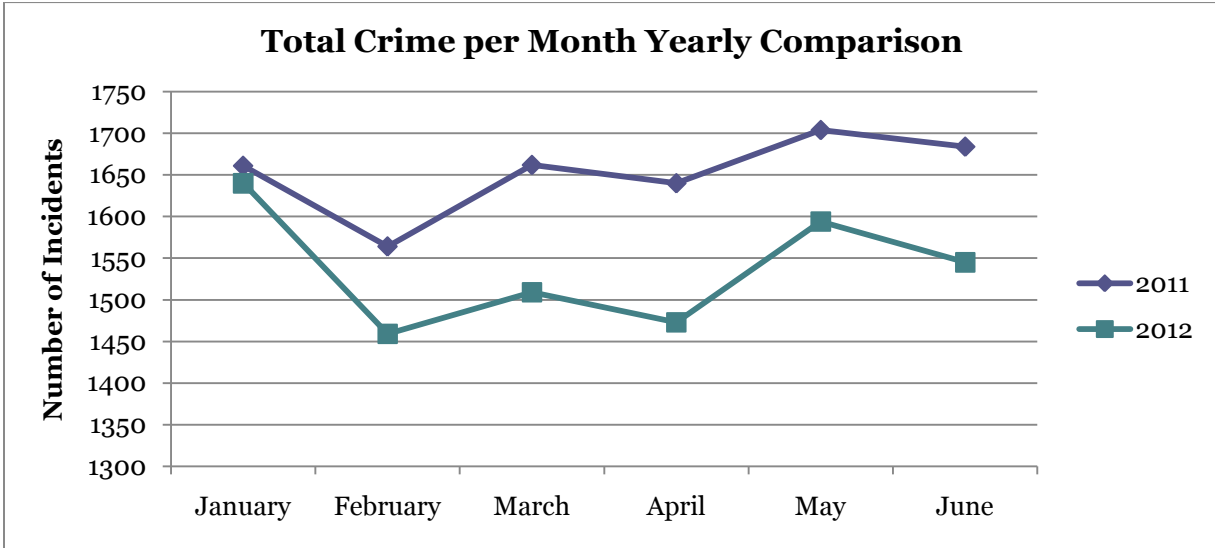
Year to date data includes number of crimes from January through June in 2012. A total of 9,542 NIBRIS reportable offenses were reported in 2012, a 6% decrease, comparing to the same period last year. The year to date crime rate amounts to 142 offenses per 1,000 population, compared to 151 offenses per 1,000 population last year. 55% of the total crimes is attributed to Other Crimes category ($n = 5,231$). Property Crimes comprise of 30% of total crimes to date, where $n = 2,876$. Crimes of Proactive Policing amount to 13% ($n = 1,290$) and crimes against persons comprise of 2% of total year to date number of crimes ($n = 145$).



¹ Note: 2011 numbers are based on 2011 population estimate, $n = 67,263$.

MONTHLY REPORT June 2012

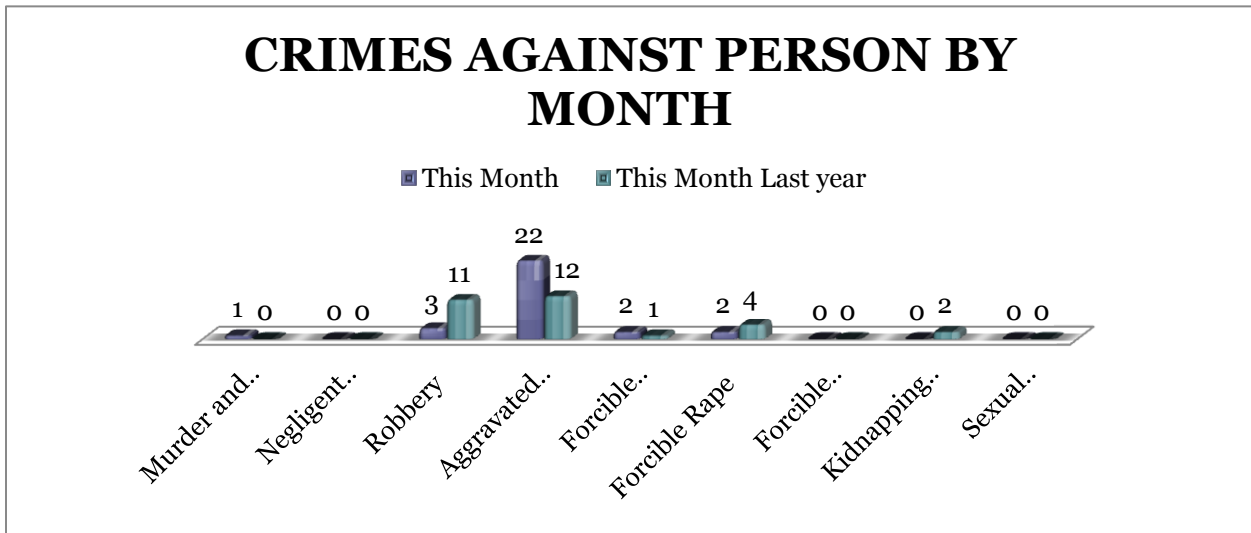
July 10, 2012



CRIMES AGAINST PERSONS

There are 9 crimes that make up this section. There were a total of 33 offenses in this area this month, no change comparing to the last year's total in June. Aggravated Assaults are up 83% (10

offences). Robberies are down 73% this month and rape decreased 50%. As demonstrated on the bar chart below, there are no significant changes in other crimes for this category.

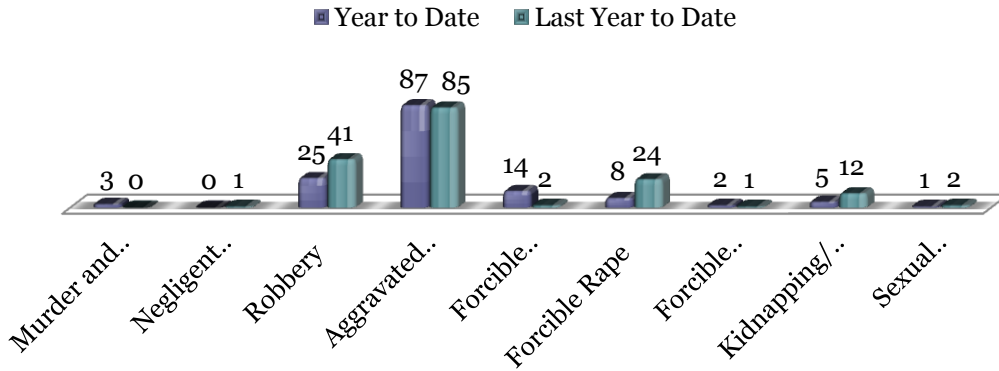


A bar graph on the following page shows the year to date data for Crimes against Persons, which amounts to a total of 145 incidents for this category of crimes, a 14% decrease, comparing to the year to date

data of last year. Forcible Foundlings are up by 12 offences. Robberies are down 39%, and forcible rapes are down 67%. To date we have 3 more murders than last year to date.

July 10, 2012

CRIMES AGAINST PERSONS BY YEAR

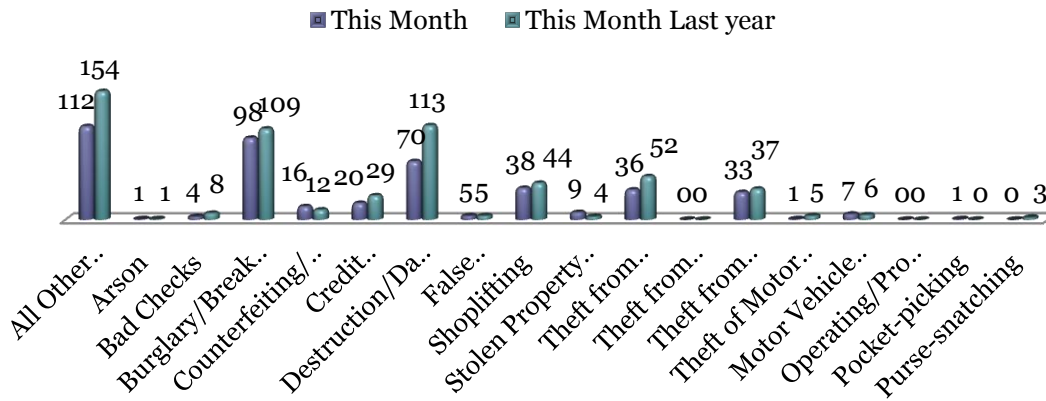


PROPERTY CRIMES

This section displays the criminal activity for 18 crimes, all against property. This month, there were a total of 451 Property Crimes, a 23% decrease comparing to June of the last year. The data indicates a significant change in Destruction/Damage/Vandalism (down

38%) and Theft from Building (down 31%) and Theft of Motor Vehicle Parts or Accessories decreased by 4 offences. Stolen Properties has increased by 5 offences.

PROPERTY CRIMES BY MONTH

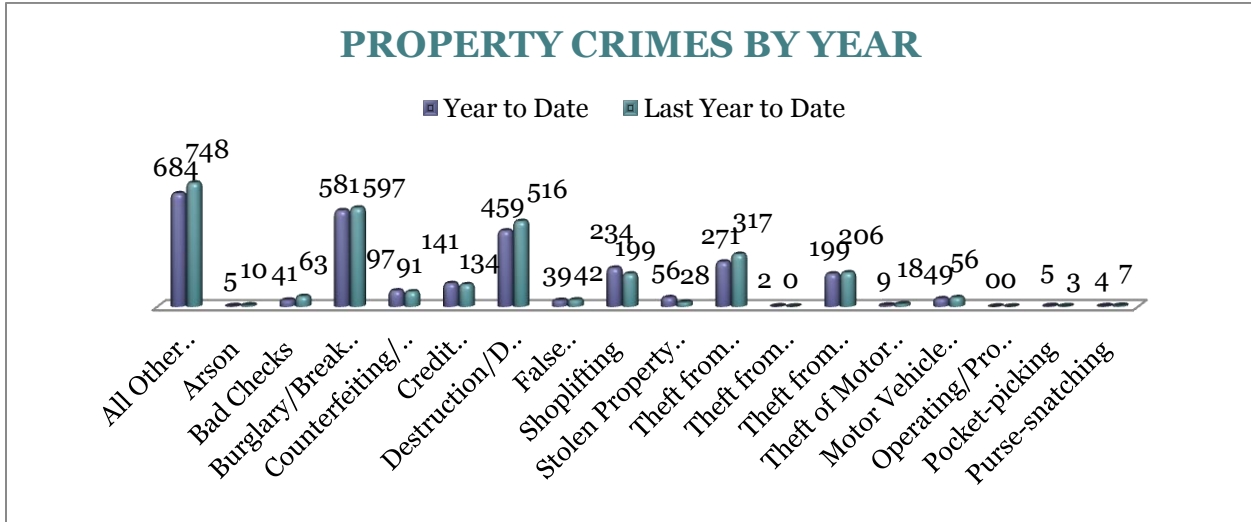


To date this year, 2,876 property offenses have occurred, a 5% decrease, comparing to the last year's data at this same time. The following significant changes are noted this year: Arson (down 5 offences),

Burglary/Breaking or Entering (down 3%), Motor Vehicle Theft (down 13%) Stolen Property Offenses increased by 28 offences and Shoplifting increased by 18%.

MONTHLY REPORT June 2012

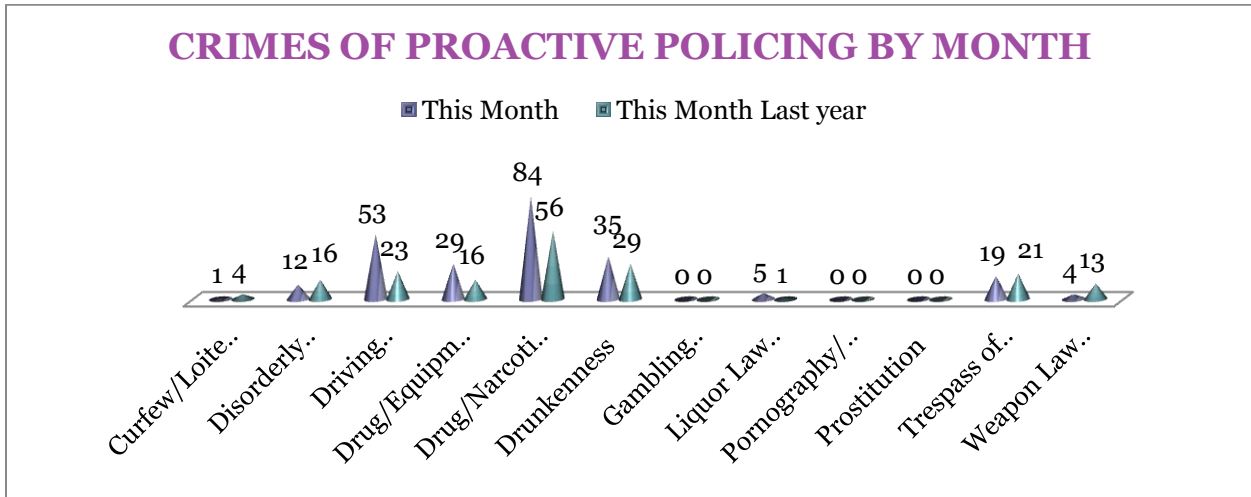
July 10, 2012



CRIMES OF PROACTIVE POLICING

Crimes of Proactive Policing are those crimes that result from police officers actively policing the streets to combat certain types of street crime. As a chart below indicates, twelve crimes fall under this category. A total of 242 offenses have occurred this month, a 35% increase,

comparing to June last year. There is a significant increase in Driving Under the Influence (up 30 offences). Drunkenness is up 21%, Drug/Narcotic Violations are up 50% and there was 4 more Liquor Law Violations reported, comparing to June of the last year. Weapon Law Violations are down 69%.



To date for the year 2012, there have been 1,290 crimes of proactive policing reported, a 20% increase, comparing to the

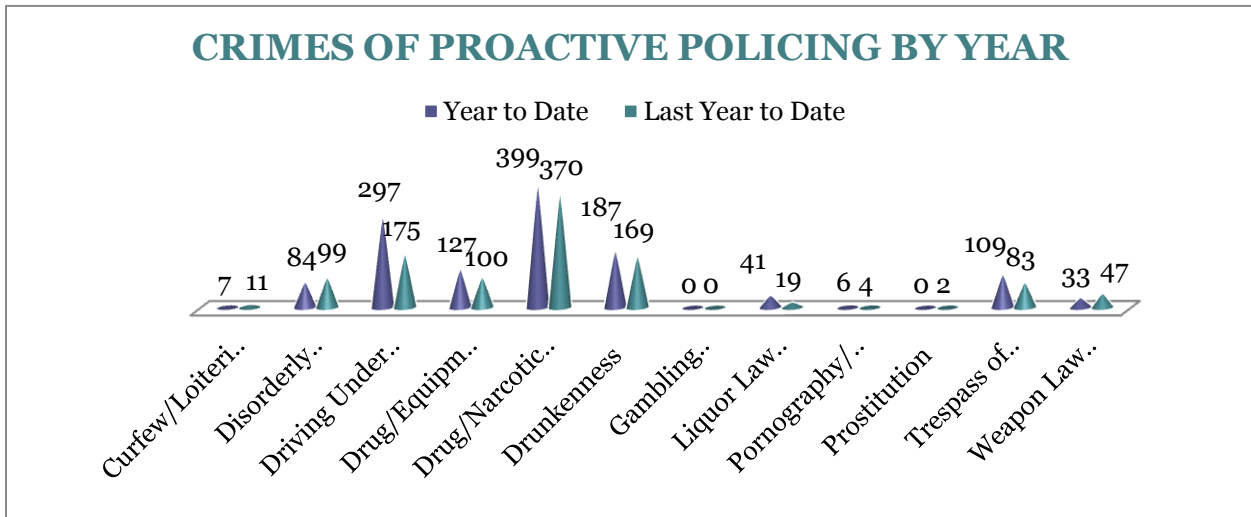
last year's to date data. Driving Under the Influence is significantly higher than at the same time last year (up 70%), Liquor Law

MONTHLY REPORT June 2012

July 10, 2012

Violations increased by 22 offences this year, and Trespass of Real Property is up 31%. Weapon Law Violations decreased by

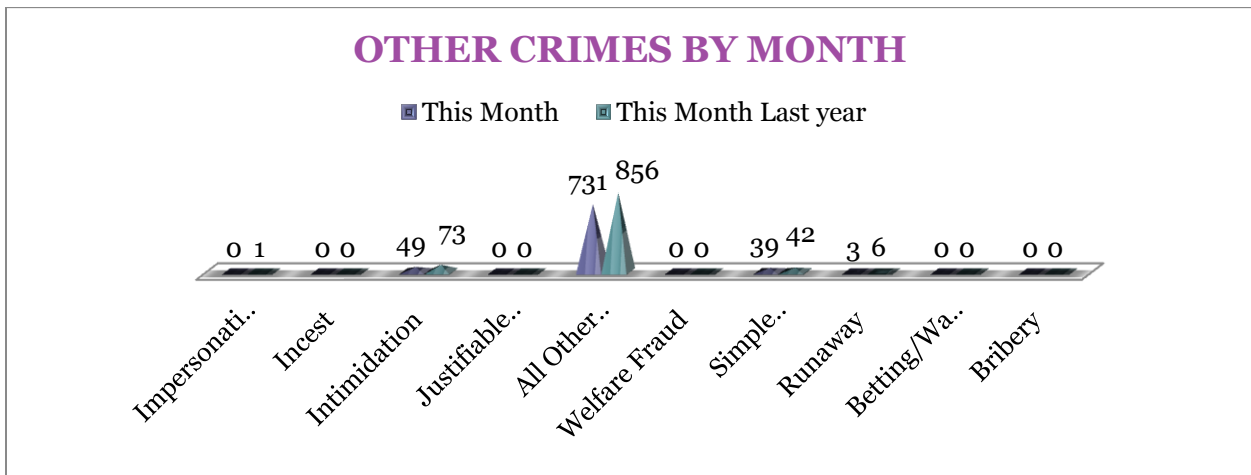
30% this year. There are no statistically significant changes noted for other offenses in this category.



OTHER CRIMES

There are 10 crimes that fall into the Other Crimes category. This month, there have been a total of 822 Other Crimes, a 16% decrease, comparing to last June (n = 978).

Runaways are down 3 offences. Intimidation is down 33%. No other significant changes are noted in this category of crimes this month.

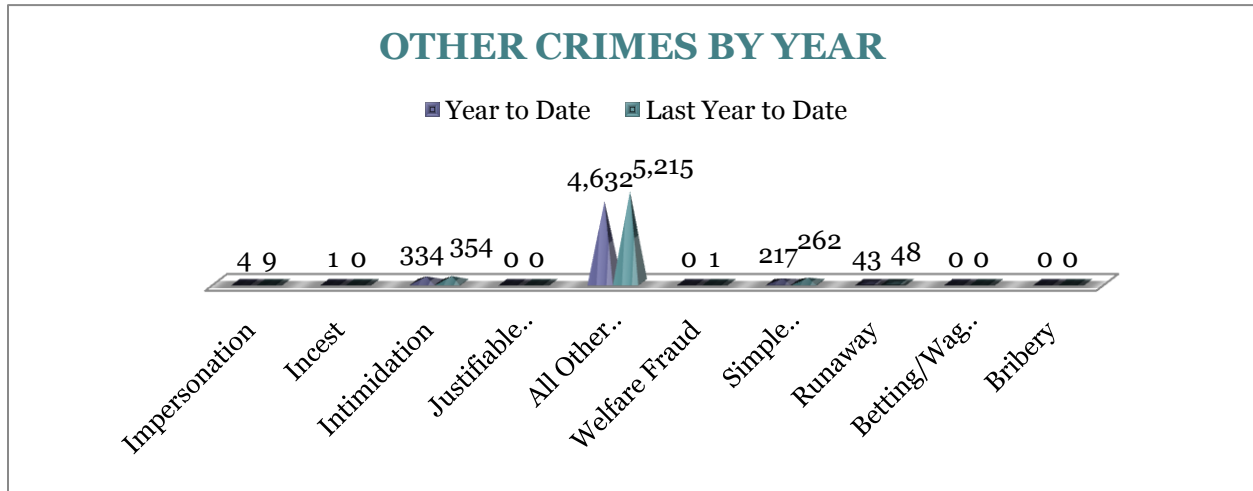


To date this year, there have been 5,231 Other Crimes offenses, an 11% decrease comparing to the last year's to date data. A notable change is observable for Simple Assaults that decreased by 17%.

Impersonations are down 5 offences. No statistically significant changes have been observed for other offenses within this category, comparing to the last year's data.

MONTHLY REPORT June 2012

July 10, 2012



*Due to technical difficulties the section on arrest demographics is not included in this month's report.

EMERGENCY 911

Also known as Public Safety Answering Point (PSAP), the Emergency 911 Division is responsible for answering all calls from public for emergency assistance, accessing the needed information to best assist, and then assigning the most efficient and effective emergency response. In addition,

this division is responsible for setting priority call dispatching to field units including Police, Fire, and EMS. Emergency 911 also maintains all records for radio logs, calls for service, and other emergency service data collections.

Calls by Type	This Month	This Month Last Year	YTD	Last YTD	Change By Month	Change YTD
Land Line E911	824	784	4,629	4,917	5%	-6%
Cell Phone E911	4,377	3,868	24,204	22,099	13%	10%
Admin Lines-non emer	16,720	17,452	103,418	98,119	-4%	5%
TOTALS	21,921	22,104	132,251	125,135	-1%	6%

MONTHLY REPORT June 2012

July 10, 2012

Calls by Agency	This Month	This Month Last Year	YTD	Last YTD	Change By Month	Change YTD
Jonesboro PD Calls	7,400	7,061	42,171	39,886	5%	6%
Craighead Cty Sheriff	1,254	1,227	7,581	7,455	2%	2%
Jonesboro Fire Dpt - dispatch	238	174	1,309	1,110	37%	18%
Jonesboro Fire Dpt - Med Asst	120	105	704	691	14%	2%
Craighead Cty - Fire	81	79	424	326	3%	30%
Craighead Cty - 1st Responder	119	86	648	516	38%	26%
Emerson Ambulance	280	249	1,807	1,468	12%	23%
Medic One	324	313	1,628	1,805	4%	-10%
Air Evac	2	3	5	4	-33%	25%
Coroner	5	2	18	15	150%	20%
ARK State Police	16	16	89	91	0%	-2%
Jonesboro Animal Control	6	1	11	124	500%	-91%
Wreckers Called	187	123	986	909	52%	8%
TOTALS	10,032	9,439	57,381	54,400	6%	5%

Calls by Municipality	This Month	This Month Last Year	YTD	Last YTD	Change By Month	Change YTD
Bay PD	82	126	655	584	-35%	12%
Bono PD	305	225	1566	1007	36%	56%
Brookland PD	145	96	1059	859	51%	23%
Caraway PD	142	91	919	493	56%	86%
Cash PD	24	183	165	403	-87%	-59%
Egypt PD	4	8	49	59	-50%	-17%
Lake City PD	132	142	952	508	-7%	87%
Monette PD	125	140	926	781	-11%	19%
TOTALS	959	1,011	6,291	4,694	-5%	34%

UNIFORM PATROL DIVISION

The UPD is responsible for responding to calls into the Emergency - 911 Division by civilians and are normally the first responders. Jonesboro is divided into 6 patrol districts. Officers from UPD are assigned to a district and work the same

district every shift. In addition, when a Traffic Officer is not available, a UPD Officer will respond to traffic accidents and assist in directing traffic when necessary.

MONTHLY REPORT June 2012

July 10, 2012

Incidents	This Month	This Month Last Year	YTD	Last YTD	Change By Month	Change YTD
Calls For Service	7,400	7,065	42,801	39,585	5%	8%
Complaints	4,098	4,224	23,846	24,153	-3%	-1%
Assists	1,192	984	7,191	7,517	21%	-4%
Incident Reports	938	983	5,187	5,720	-5%	-9%
Street Accidents	84	72	448	514	17%	-13%
Private Property Accidents	46	45	269	264	2%	2%
Traffic Stops	2,024	1,924	12,425	12,617	5%	-2%
Traffic Citations	728	724	4,217	4,306	1%	-2%
Written Warnings	913	603	5348	4,124	51%	30%
DWI	42	17	244	139	147%	76%
Mis. Arrests	491	503	2,843	2,982	-2%	-5%
Felony Arrests	115	108	565	568	6%	-1%
Warrants Served	1,416	1,815	8,246	8,898	-22%	-7%
Alarms	372	338	1,971	1,932		
TOTALS	19,859	19,405	115,601	113,319	2%	2%
Hours Worked	8,965	9,239	54,056	61,455	-3%	-12%

PROWL

The Prowl unit is a uniformed street crimes unit specializing in criminal patrol, narcotics enforcement, gang investigation, and prostitution activity. The unit conducts directed patrols, investigates citizen

complaints of street-level criminal activity, and directly assists the 2nd Judicial Drug Task Force. PROWL also assists any division within the Jonesboro Police Department at any time when needed.

Incidents	This Month	This Month Last Year	YTD	Last YTD	Change By Month	Change YTD
Street Accidents	0	0	0	0	N/C	N/C
Private Property Accidents	0	0	1	0	N/C	N/C
Traffic Citations	51	48	212	210	6%	1%
DWI	0	0	1	0	N/C	N/C
Mis. Arrests	330	186	1,228	699	77%	76%
Felony Arrests	39	16	174	175	144%	-1%
Drug Arrests	37	16	174	182	131%	-4%
Public Intoxication Arrests	0	0	1	0	N/C	N/C
Calls For Service	127	80	542	553	59%	-2%
Alarms	0	0	0	0	N/C	N/C
Parking Citations	0	0	0	0	N/C	N/C
Written Warnings	76	56	320	288	36%	11%
Assists	0	0	0	0	N/C	N/C
TOTALS	660	402	2,653	2,107	64%	26%
Value of Drugs Seized	\$20,200	\$1,740	\$64,185	\$48,430	1061%	33%
Value of Asstes Seized	8,200	1,368	32,418	46,164	499%	-30%
Patrol Miles	6,950	5,950	35,750	31,470	17%	14%

MONTHLY REPORT June 2012

July 10, 2012

CRIMINAL INVESTIGATIVE DIVISION

The CID is responsible for conducting follow-up investigations into criminal acts reported to the Jonesboro Police Department. The primary goal is to collect and present evidence that conclusively

leads to a successful arrest. Additionally, CID is charged with clearing additional crimes, recovering stolen property, preventing additional crimes, and gathering intelligence information.

Investigations	This Month	This Month Last Year	YTD	Last YTD	Change By Month	Change YTD
Criminal Investigations Assigned	82	100	417	527	-18%	-21%
Criminal Investigations Closed	53	73	290	449	-27%	-35%
Cleared by Arrests	37	49	200	316	-24%	-37%
Unfounded	6	9	35	42	-33%	-17%
Exceptionally Cleared	7	6	28	47	17%	-40%
Filed With Prosecutors Office	4	8	22	23	-50%	-4%
TOTALS	189	245	992	1404	-23%	-29%

Crimes Against Persons	This Month	This Month Last Year	YTD	Last YTD	Change By Month	Change YTD
Criminal Investigations Assigned	23	18	102	117	28%	-13%
Criminal Investigations Closed	23	21	95	111	10%	-14%
Cleared by Arrests	17	15	69	82	13%	-16%
Unfounded	1	3	8	9	-67%	-11%
Exceptionally Cleared	2	2	7	16	0%	-56%
Filed With Prosecutors Office	3	1	11	8	200%	38%
TOTALS	69	60	292	343	15%	-15%

Property Crimes	This Month	This Month Last Year	YTD	Last YTD	Change By Month	Change YTD
Criminal Investigations Assigned	56	79	290	374	-29%	-22%
Criminal Investigations Closed	29	46	175	284	-37%	-38%
Cleared by Arrests	19	32	127	227	-41%	-44%
Unfounded	5	5	23	29	0%	-21%
Exceptionally Cleared	5	4	20	38	25%	-47%
Filed With Prosecutors Office	0	5	7	8	-100%	-13%
TOTALS	114	171	642	960	-33%	-33%

Crimes Against Children	This Month	This Month Last Year	YTD	Last YTD	Change By Month	Change YTD
Criminal Investigations Assigned	2	2	12	16	0%	-25%
Criminal Investigations Closed	2	5	16	22	-60%	-27%
Cleared by Arrests	1	2	8	7	-50%	14%
Unfounded	0	1	5	11	-100%	-55%
Exceptionally Cleared	0	0	1	0	N/C	N/C
Filed With Prosecutors Office	1	2	5	7	-50%	-29%
TOTALS	6	12	47	63	-50%	-25%
Miscellaneous Investigations Assigned	1	1	1	1	N/C	0%
Miscellaneous Investigations Cleared	2	2	10	13	N/C	-23%

MONTHLY REPORT June 2012

July 10, 2012

WARRANTS

The Warrants Division is responsible for serving warrants, criminal summonses, and subpoenas that are issued by the District Court. On city court days, the Warrants Division provides a bailiff for court and a transport officer. In addition, this Division

is responsible for transporting wanted persons arrested in other jurisdictions back to Jonesboro. The STEP program operates within this division and is a grant-funded operation in which officers can get paid overtime to enforce the safety belt law.

Arrests	This Month	This Month Last Year	YTD	Last YTD	Change By Month	Change YTD
Misdemeanor	710	1260	6127	6709	-44%	-9%
Felony	0	0	2	2	N/C	0%
Total Arrests	710	1260	6129	6711	-44%	-9%

Warrants by Activity	This Month	This Month Last Year	YTD	Last YTD	Change By Month	Change YTD
Subpoenas	435	398	2033	2097	9%	-3%
Commitments	0	2	17	10	-100%	70%
Traffic Citations	3	2	14	9	50%	56%
Complaints	3	1	7	2	200%	250%
Assist	0	0	1	0	N/C	N/C
Alarms	0	0	0	0	N/C	N/C

Hours by Activity	This Month	This Month Last Year	YTD	Last YTD	Change By Month	Change YTD
SI Criminal	129	206.5	1201.5	1367	-38%	-12%
Court	129.17	113.5	698.5	707.83	14%	-1%
Prisoner Transport	21.5	31	184.5	169.5	-31%	9%

Hours Worked	This Month	This Month Last Year	YTD	Last YTD	Change By Month	Change YTD
Regular Hours Worked	469	559	5244	3814.5	-16%	37%
Overtime Hours Worked	16	18.5	38	56.5	-14%	-33%
TOTAL Hours Worked	485	577.5	5282	3871	-16%	36%

Mileage	This Month	This Month Last Year	YTD	Last YTD	Change By Month	Change YTD
Total Mileage	2284	3177	15389	15729	-28%	-2%

STEP	This Month	This Month Last Year	YTD	Last YTD	Change By Month	Change YTD
DWI Arrest	0	0	7	4	N/C	75%
DUI Arrest	0	1	0	0	-100%	N/C
Traffic Citations	337	138	1493	815	144%	83%
Felony Arrests	1	0	6	3	N/C	100%
Drug Arrests	0	0	1	1	N/C	0%
STEP TOTALS	338	139	1507	823	143%	83%
STEP Hours Worked	202	87.5	960	332	131%	189%
STEP Miles Driven	1290	769	5244.4	3390	68%	55%

MONTHLY REPORT June 2012

July 10, 2012

DRUG TASK FORCE

The DTF is responsible for investigating major drug traffickers in the area, including all types of illegal drugs. They

work closely with local, state, and federal agencies to eradicate drugs from the community.

INVESTIGATIONS	This Month	This Month Last Year	YTD	Last YTD	Change By Month	Change YTD
Opened	20	22	155	171	-9%	-9%
Closed	20	25	122	166	-20%	-27%
TOTAL	40	47	277	337	-15%	-18%

With Nexus to Jonesboro	This Month	This Month Last Year	YTD	Last YTD	Change By Month	Change YTD
Opened	20	25	148	174	-20%	-15%
Closed				0	N/C	N/C
TOTAL	20	25	148	174	-20%	-15%

Outside Jonesboro (No Known Nexus)	This Month	This Month Last Year	YTD	Last YTD	Change By Month	Change YTD
Opened	1	2	7	13	-50%	-46%
Closed	0	0		0	N/C	N/C
TOTAL	1	2	7	13	-50%	-46%

ASSISTANCE RENDERED	This Month	This Month Last Year	YTD	Last YTD	Change By Month	Change YTD
Assist to Outside Agencies	9	1	40	12	800%	233%
Assist to Jonesboro UPD/CID	7	7	79	89	0%	-11%

ARRESTS	This Month	This Month Last Year	YTD	Last YTD	Change By Month	Change YTD
Miscellaneous	6	15	46	61	-60%	-25%
Felony	23	42	161	270	-45%	-40%
Marijuana	3	4	23	52	-25%	-56%
Cocaine	0	1	12	9	-100%	33%
Crack Cocaine	1	1	18	15	0%	20%
Methamphetamine/ICE	6	10	48	64	-40%	-25%
LSD	0	0	0	0	N/C	N/C
Extasy (MDMA or Other Designer Drug)	0	0	0	0	N/C	N/C
Prescription	1	3	9	16	-67%	-44%
Opiates (Heroine, Opium)	0	0	0	1	N/C	-100%
Labs	2	4	4	16	-50%	-75%
All Other Drug Offenses	3	0	21	0	N/C	N/C

ASSET FORFEITURE	This Month	This Month Last Year	YTD	Last YTD	Change By Month	Change YTD
Vehicles Seized (No.)	1	0	0	0	N/C	N/C
Value of Assets Seized(Includes Value of vehicles)	\$5,000	\$0	\$7,400	\$33,105	N/C	-78%
Asset Value Awarded to Jonesboro PD (State)		\$0	\$0	\$0	N/C	N/C
Asset Value Awarded to Jonesboro PD (Federal)		\$0	\$0	\$0	N/C	N/C
Asset Value Awarded to Jonesboro PD (Total)		\$0	\$0	\$0	N/C	N/C

MONTHLY REPORT June 2012

July 10, 2012

ARRESTS DEMOGRAPHICS	This Month	This Month Last Year	YTD	Last YTD	Change By Month	Change YTD
White	12	17	66	115	-29%	-43%
African American	5	8	49	62	-38%	-21%
Latino	2	2	13	5	0%	160%
Asian	0	0	0	0	N/C	N/C
Other/Bi-Racial	0	0	0	0	N/C	N/C
Male	12	18	90	143	-33%	-37%
Female	7	10	38	36	-30%	6%
White Male	6	8	37	81	-25%	-54%
White Female	5	8	26	30	-38%	-13%
African American Male	4	7	39	56	-43%	-30%
African American Female	1	1	9	4	0%	125%
Latino Male	2	2	11	5	0%	120%
Latino Female	0	0	0	0	N/C	N/C
Asian Male	0	0	0	0	N/C	N/C
Asian Female	0	0	0	0	N/C	N/C
Other/Bi-Racial Male	0	0	0	0	N/C	N/C
Other/Bi-Racial Female	0	0	0	0	N/C	N/C

TRAFFIC

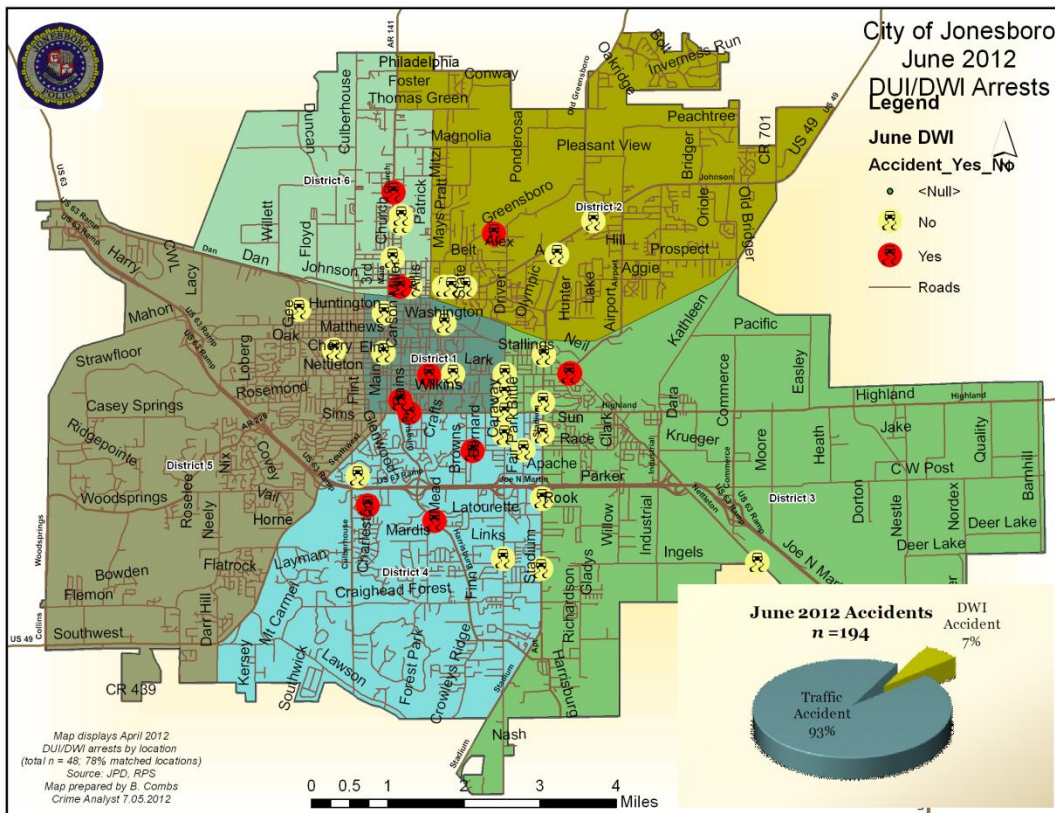
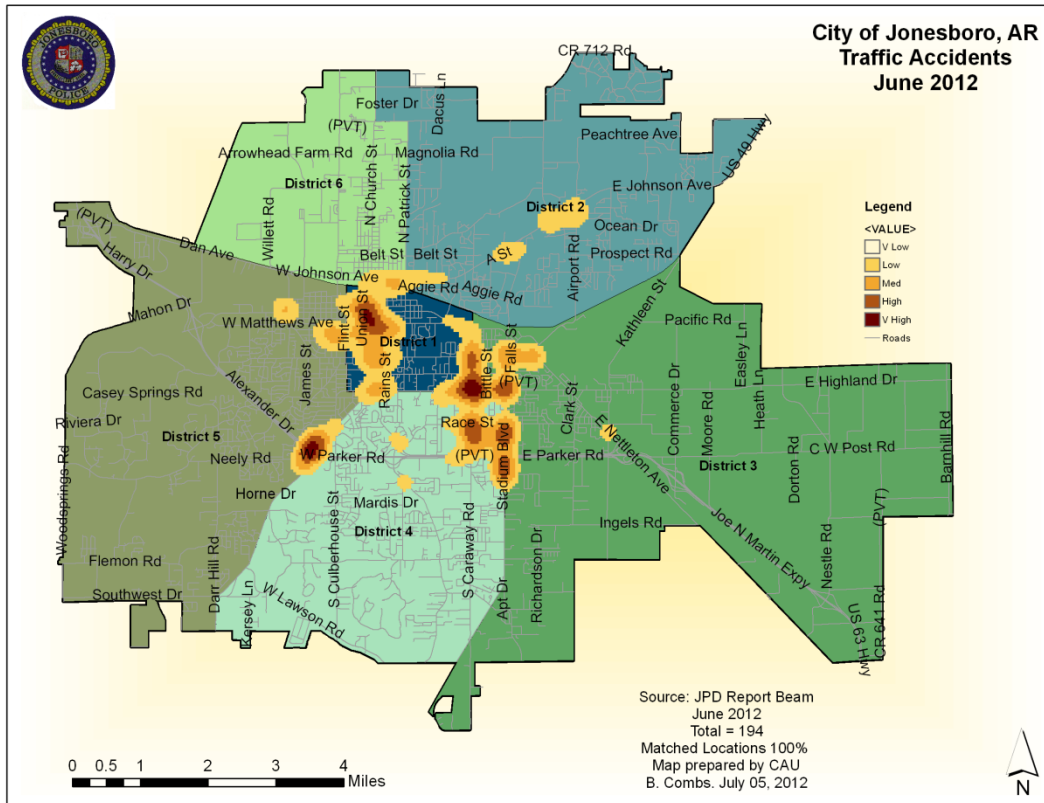
Comprised of three motor units and three Chargers, the Traffic Enforcement Unit responds to traffic accidents and provides increased enforcement in particularly challenging areas. This unit also provides

extra coverage for specific congestion problems and special events in the community. Last, they work details targeting specific issues, such as DWI enforcement and traffic safety checkpoints.

Incidents	This Month	This Month Last Year	YTD	Last YTD	Change By Month	Change YTD
Street Accidents	114	128	786	762	-11%	3%
Private Property Accidents	31	58	215	256	-47%	-16%
Traffic Citations	134	186	835	1029	-28%	-19%
DWI	5	2	22	24	150%	-8%
Mis. Arrests	16	35	100	123	-54%	-19%
Felony Arrests	1	1	2	12	0%	-83%
Drug Arrests	0	0	0	0	N/C	N/C
Public Intoxication Arrests	0	0	0	1	N/C	-100%
Calls For Service	253	277	1466	1643	-9%	-11%
Alarms	0	1	0	10	-100%	-100%
Parking Citations	0	0	0	0	N/C	N/C
Written Warnings	139	26	693	507	435%	37%
TOTALS	693	714	4119	4367	-3%	-6%
Value of Asstes Seized	\$0	\$0	\$0	\$0	N/C	N/C
Patrol Miles	6,346	4,813	37,672	28,821	32%	31%
Hours Worked	784	766	499.5	4597.5	2%	-89%

MONTHLY REPORT June 2012

July 10, 2012



MONTHLY REPORT June 2012

July 10, 2012

PARKING ENFORCEMENT

The Parking Enforcement Division is responsible for enforcing parking laws in the downtown area. This service provides a safe and convenient parking situation for the public.

CITATIONS ISSUED	This Month	This Month Last Year	YTD	Last YTD	Change By Month	Change YTD
Citations	28	34	180	209	-18%	-14%
Verbal Warnings	19	19	87	32	N/C	N/C

MINUTES BY ACTIVITY	This Month	This Month Last Year	YTD	Last YTD	Change By Month	Change YTD
Office	585	715	1,065	3,125	-18%	-66%
Admin(Non-Office)	0	430	2,515	4,250	-100%	-41%
Community	0	0	0	0	N/C	N/C
Training	0	115	0	115	-100%	-100%
Patrol	4,815	6,945	29,485	30,635	-31%	-4%

ANIMAL CONTROL

The Animal Control Division is responsible for educating the public on safe and humane issues regarding animal treatment, enforcing all animal laws and ordinances, assisting the public in resolving animal issues, and protecting the safety and welfare of the citizens and animals in this community.

Incidents	This Month 04/12	This Month Last Year	YTD 2012	Last YTD 2011	Change By Month	Change YTD
Barking Complaints	9	8	54	91	13%	-41%
Bite Reports	4	9	49	82	-56%	-40%
Door Hangers	21	32	268	219	-34%	22%
Welfare Checks	41	154	556	677	-73%	-18%
Advised of Rights	813	770	5,047	3,713	6%	36%
Incident Reports	5	3	41	29	67%	41%
Gone on Arrival	48	31	334	164	55%	104%
Complaints	460	726	4,435	3,872	-37%	15%
Desk Complaints	1,608	1,770	8,281	9,593	-9%	-14%
Captured Dogs	104	162	863	846	-36%	2%
Captured Cats	11	22	40	79	-50%	-49%
Captured Wildlife	32	51	155	145	-37%	7%
Chemical Captures	1	2	18	20	-50%	-10%
Traps	56	11	216	65	409%	232%
Deceased Animals	53	60	507	401	-12%	26%
Assist J.P.D.	5	11	28	57	-55%	-51%
Assist C.S.O.	0	2	1	10	-100%	-90%
Public Relations	589	813	2,894	4,583	-28%	-37%
CITATIONS ISSUED	27	196	326	769	-86%	-58%
WARNINGS ISSUED	11	87	225	398	-87%	-43%

MONTHLY REPORT June 2012

July 10, 2012

Incidents	This Month 04/12	This Month Last Year	YTD 2012	Last YTD 2011	Change By Month	Change YTD
Physical Arrests	2	16	8	29	-88%	-72%
City Warrants Served	4	103	25	184	-96%	-86%
County Warrants Served	0	14	14	14	-100%	0%
Felony Bench Warrants	1	3	1	3	-67%	-67%
Euthanized	93	128	419	407	-27%	3%
Deceased Animals Landfill lbs.	3,400	4,400	21,436	21,040	-23%	2%
Wildlife Euthanized	32	51	155	145	-37%	7%
Sent to Rescue Centers	3	0	50	17	N/C	194%
Adoptions	46	42	281	246	10%	14%
Miles Driven	7,009	7,145	41,581	42,760	-2%	-3%

* Above numbers are based on work performed by 4 officers

FLEET MAINTNANCE

The Fleet Maintenance is responsible for all of the police vehicle maintenance upkeep, cleanliness, and purchasing. In addition,

this Division handles most of the purchasing of equipment, supplies, and uniforms for all of the Police Department.

Repair Costs by Model Year	This Month	This Month Last Year	YTD	Last YTD	Change By Month	Change YTD
95-99	\$0.00	\$0.00	\$0.00	\$0.00	N/C	N/C
2000	\$0.00	\$0.00	\$0.00	\$159.44	N/C	-100%
2001	\$0.00	\$0.00	\$300.46	\$11.61	N/C	2488%
2002	\$0.00	\$0.00	\$0.00	\$405.65	N/C	-100%
2003	\$0.00	\$0.00	\$0.00	\$0.00	N/C	N/C
2004	\$11.61	\$375.69	\$1,414.43	\$1,295.74	-97%	9%
2005	\$0.00	\$1,479.98	\$712.04	\$6,072.21	-100%	-88%
2006	\$4,792.12	\$4,715.93	\$24,310.85	\$14,875.45	2%	63%
2007	\$95.27	\$2,364.87	\$6,683.78	\$9,221.15	-96%	-28%
2008	\$193.70	\$130.62	\$2,116.72	\$1,343.53	48%	58%
2009	\$697.86	\$90.68	\$1,628.72	\$236.30	N/C	N/C
2010	\$0.00	\$0.00	\$489.28	\$433.45	N/C	N/C
2011	\$39.47	\$11.61	\$796.79	\$11.61	N/C	N/C
2012	\$0.00	n/a	\$0.00			
Totals	\$5,830.03	\$9,169.38	\$38,453.07	\$34,066.14	-36%	13%

MONTHLY REPORT June 2012

July 10, 2012

Routine Preventative Maintenance by Model Year	This Month	This Month Last Year	YTD	Last YTD	Change By Month	Change YTD
95-99	\$0.00	\$0.00	\$72.00	\$0.00	N/C	N/C
2000	\$0.00	\$0.00	\$20.00	\$40.00	N/C	-50%
2001	\$0.00	\$0.00	\$0.00	\$68.00	N/C	-100%
2002	\$0.00	\$20.00	\$100.46	\$30.30	-100%	232%
2003	\$0.00	\$0.00	\$172.00	\$49.00	N/C	251%
2004	\$20.00	\$69.00	\$218.00	\$1,272.51	-71%	-83%
2005	\$82.00	\$194.50	\$527.35	\$2,018.73	-58%	-74%
2006	\$1,792.98	\$690.20	\$9,643.61	\$9,210.85	160%	5%
2007	\$1,131.88	\$1,420.58	\$6,464.37	\$5,520.34	-20%	17%
2008	\$44.50	\$69.00	\$2,119.81	\$1,510.19	-36%	40%
2009	\$1,516.80	\$464.51	\$5,468.42	\$2,120.93	N/C	N/C
2010	\$148.50	\$315.28	\$1,664.46	\$1,455.98	N/C	N/C
2011	\$166.50	\$40.00	\$987.00	\$60.00	N/C	N/C
2012	\$0.00	n/a	\$352.81	n/a		
Totals	\$4,903.16	\$3,283.07	\$27,810.29	\$23,356.83	49%	19%

RECORDS

The Records Division is responsible for providing administrative and clerical support to the department. Major responsibilities include entering the accident and incident reports and tickets into the records database management

system, assisting the general public for report requests, performing criminal backgrounds, serving as a switchboard at times, performing validations, and setting up and managing the payment plans out of court.

RECORDS	This Month	This Month Last Year	YTD	Last YTD	Change By Month	Change YTD
Incident/Arrest Reports Processed	1234	1393	7644	7899	-11%	-3%
Accident Reports Processed	193	203	1202	1225	-5%	-2%
Citations Processed	4159	4816	25856	26741	-14%	-3%
Warnings Processed	986	503	5260	3654	96%	44%
Backgrounds	12	9	77	117	33%	-34%
Fingerprints	91	93	714	607	-2%	18%
Photos	3	0	3	15	N/C	-80%
Accident Requests	99	96	716	604	3%	19%
Accident Requests Online	116	164	643	994	-29%	-35%
TOTALS	6,893	7,277	42,115	41,856	-5%	1%

MONTHLY REPORT June 2012

July 10, 2012

PROFESSIONAL STANDARDS

The Office of Professional Standards, a unit within Administration, is charged with the compilation and updating of an extensive set of policies and procedures and providing a general operations guideline and code of conduct for officers to follow.

In the event that a member of the public does experience a negative interaction with an officer, mechanisms are in place for them to lodge a complaint. All complaints are reviewed and investigations completed in a timely manner. (See next page for details)

Professional Standards	This Month	This Month Last Year	YTD	Last YTD	Change By Month	Change YTD
Opened (TOTAL)	7	1	42	23	600%	83%
Closed	5	1	40	21	400%	90%
Inquiries	7	0	40	19	N/C	111%
Formal Investigations	0	1	2	5	-100%	-60%
Sustained	4	1	32	17	300%	88%
Not-Sustained	1	0	1	1	N/C	0%
Exonerated	0	0	1	0	N/C	N/C
Unfounded	0	0	6	3	N/C	100%

END OF REPORT