

# JONESBORO POLICE DEPARTMENT

## Monthly Report

July 2012

Office of Crime Analysis & Criminal Intelligence  
410 W Washington Ave  
Jonesboro, AR 72401  
Basia Combs, Crime Analyst

### IN THIS REPORT

<b>CRIME ANALYSIS .....</b>	<b>1</b>
Total Crime .....	2
Crimes against Person .....	3
Property Crimes .....	4
Crimes of Proactive Policing 5	
Other Crimes.....	6
<b>EMERGENCY 911 .....</b>	<b>9</b>
<b>UPD .....</b>	<b>10</b>
<b>PROWL .....</b>	<b>10</b>
<b>CID .....</b>	<b>11</b>
<b>WARRANTS .....</b>	<b>12</b>
<b>DRUG TASK FORCE ....</b>	<b>13</b>
<b>TRAFFIC .....</b>	<b>14</b>
Maps .....	15
<b>PARKING</b>	
<b>ENFORCEMENT .....</b>	<b>16</b>
<b>ANIMAL CONTROL .....</b>	<b>17</b>
<b>FLEET MAINTENANCE 17</b>	
<b>RECORDS .....</b>	<b>18</b>
<b>PROFESSIONAL</b>	
<b>STANDARDS .....</b>	<b>19</b>

*The purpose of the Jonesboro Police Department Monthly Report is to compile data into one integrated report for review, allowing for a seamless flow of information for better decision-making. After each department collates their monthly numbers and sends it to the Office of Crime Analysis, it is organized into sections of departmental data, analyzed and packaged, and finally disseminated to department heads, the Chief of Police, the City Mayor, and the City Council. Major sections include Crime Analysis, Emergency 911, Uniform Police Division, Prowl, Criminal Investigative Division, Warrants, Drug Task Force, Traffic, Parking Enforcement, Animal Control, Fleet Maintenance, Records, and Professional Standards.*

### **CRIME ANALYSIS**

The Crime Analysis division consists of one Crime Analyst and one part-time Crime Analyst Assistant. The Crime Analyst position is responsible for the analysis and dissemination of crime activity data and the collection and maintenance of crime intelligence information for the city of Jonesboro. Additionally, the Crime Analyst is charged with providing the department with current and accurate crime maps, presenting crime activity data to audiences of interest, and responding to requests for crime data from civilians and departmental staff. Data exported from this division is used by field agents for more effective, efficient policing, administration for improved staffing decisions, and the Mayor's office for community decision making and enhanced public relations. The following section is broken down into Total Crime, Crimes against Persons, Property Crimes, Crimes of Proactive Policing, Other Crimes, Arrest Demographics, Total Crime Monthly Comparison, and Next Month Predictions.

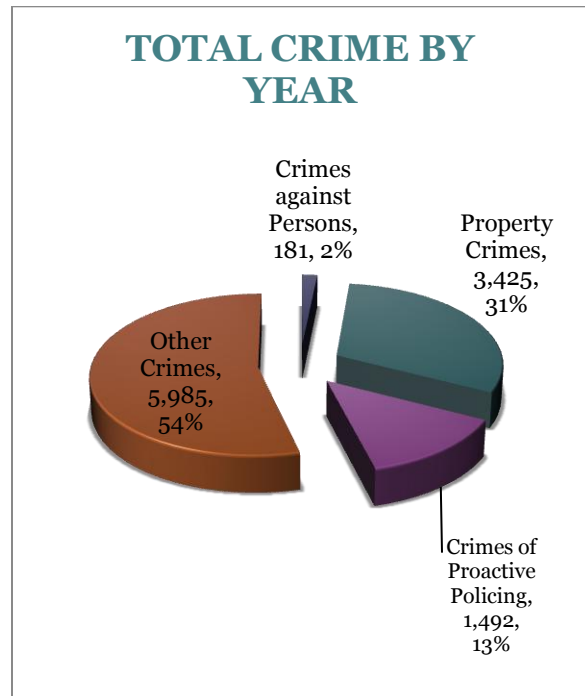
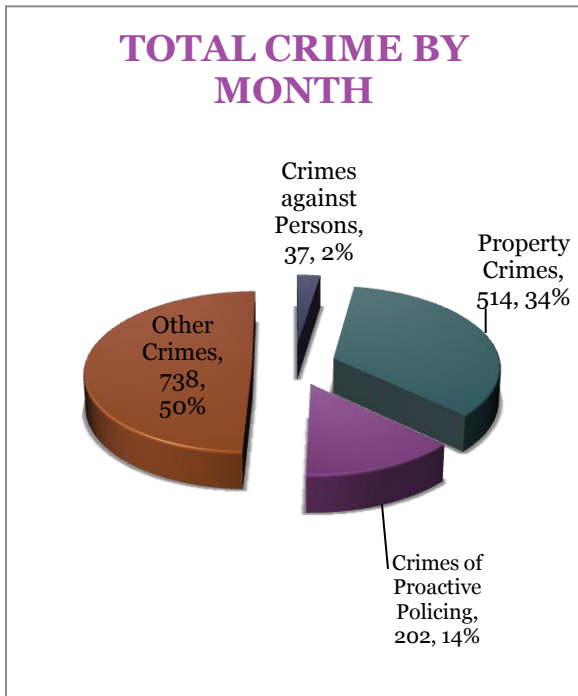
# MONTHLY REPORT July 2012

August 13, 2012

## TOTAL CRIME

The crime activity for the month of July 2012 was at a total of 1,491 NIBRIS reportable offenses, a 14% decrease, comparing to a total of offenses in July last year. With Jonesboro population equal to 67,351, the crime rate was at 22 crimes per 1,000 population for the month of May this year, comparing to 26 crimes per 1,000 population last year<sup>1</sup>, a 14% decrease. As indicated on a pie chart below, Other Crimes absorb the majority, 50%, of this month's crime activity ( $n = 738$ ). Property crimes fall into a second place and comprise of 34% of all the crimes ( $n = 514$ ). Following in third and fourth places are crimes of proactive policing at 14% ( $n = 202$ ) and crimes against persons at 2% ( $n = 37$ ), respectively.

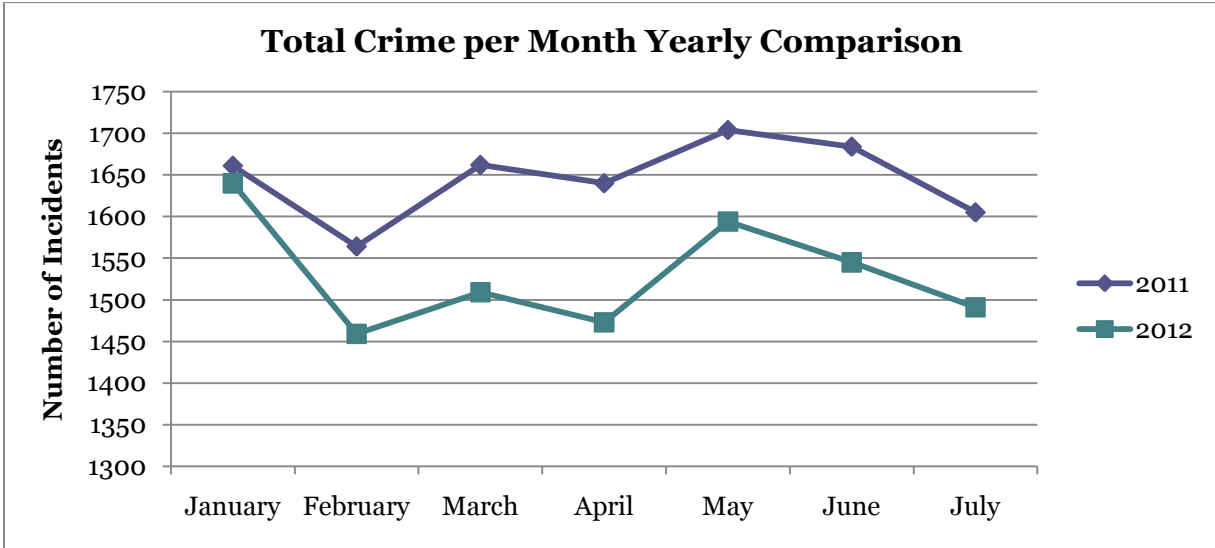
Year to date data includes number of crimes from January through July 2012. A total of 11,083 NIBRIS reportable offenses were reported in 2012, a 7% decrease, comparing to the same period last year. The year to date crime rate amounts to 165 offenses per 1,000 population, compared to 177 offenses per 1,000 population last year. A 54% of all the crimes is attributed to Other Crimes category ( $n = 5,985$ ). Property Crimes comprise of 31% of all the crimes to date, where  $n = 3,425$ . Crimes of Proactive Policing amount to 13% ( $n = 1,492$ ) and crimes against persons comprise of 2% of a total year to date number of crimes ( $n = 181$ ).



<sup>1</sup> Note: 2011 numbers are based on 2011 population estimate,  $n = 67,263$ .

# MONTHLY REPORT July 2012

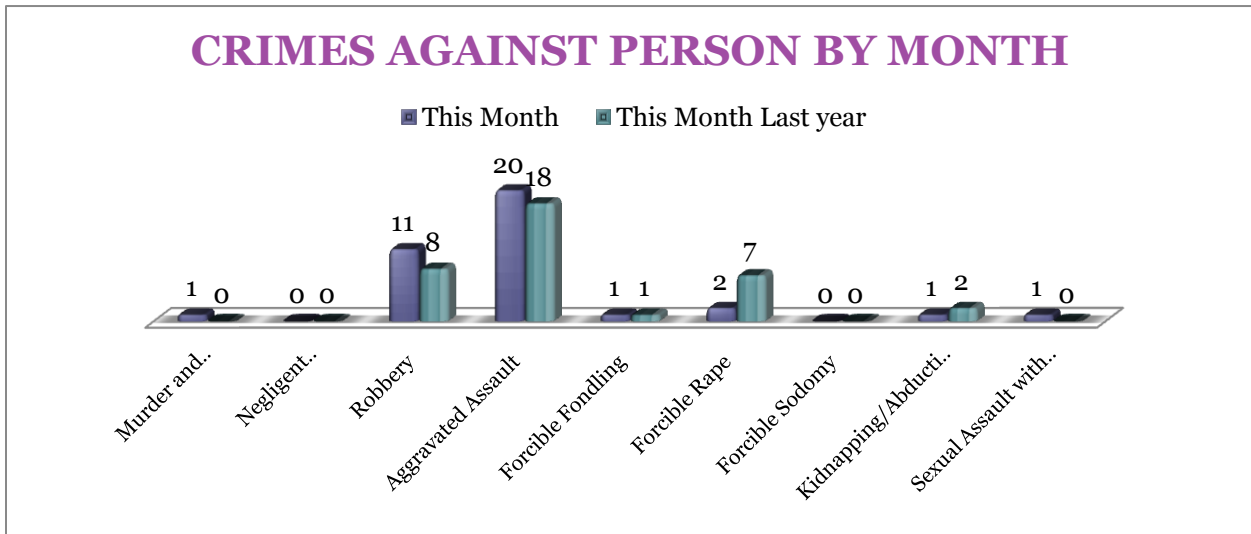
August 13, 2012



## CRIMES AGAINST PERSONS

There are 9 crimes that make up this section. There were a total of 37 offenses in this area this month, a 3% increase, comparing to the last year's total in July. Aggravated Assaults are up 11% and

Robberies are up 38% this month. The rape decreased 71%. As demonstrated on the bar chart below, there are no significant changes in other crimes for this category.



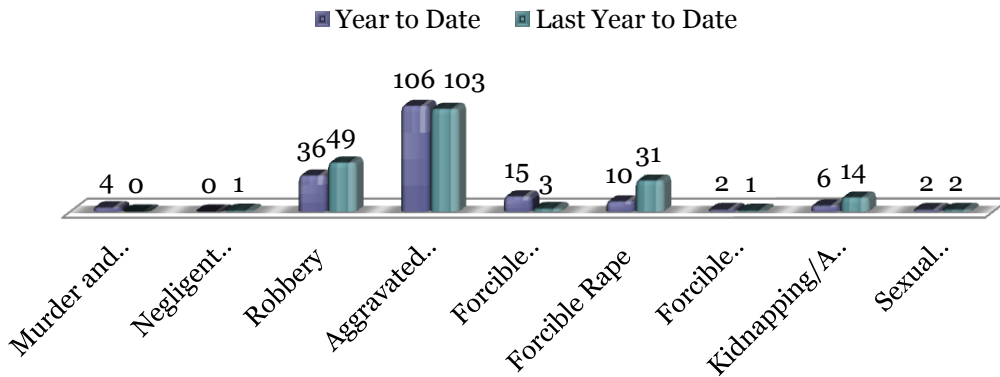
A bar graph on the following page shows the year to date data for Crimes against Persons, which amounts to a total of 181 incidents for this category of crimes, an 11% decrease, comparing to the year to

date data of last year. Forcible Foundlings are up by 12 offences. Robberies are down 27%, and forcible rapes are down 68%. To date we have 4 more murders than last year to date.

MONTHLY REPORT July 2012

August 13, 2012

CRIMES AGAINST PERSONS BY YEAR

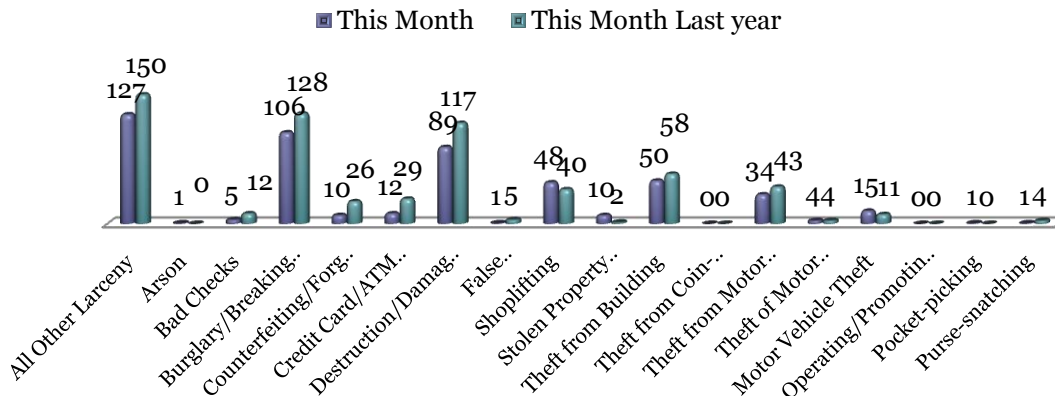


PROPERTY CRIMES

This section displays the criminal activity for 18 crimes, all against property. This month, there were a total of 514 Property Crimes, an 18% decrease comparing to July of last year. The data indicates a significant change in All Other Larceny (down 15%), Burglary/Breaking & Entering

(down 17%), Counterfeiting/Forgery (down 62%), Destruction / Damage / Vandalism (down 24%), and Theft from Motor Vehicle (down 21%). Stolen Properties has increased by 8 offences and Motor Vehicle Theft increased by 4 offenses.

PROPERTY CRIMES BY MONTH



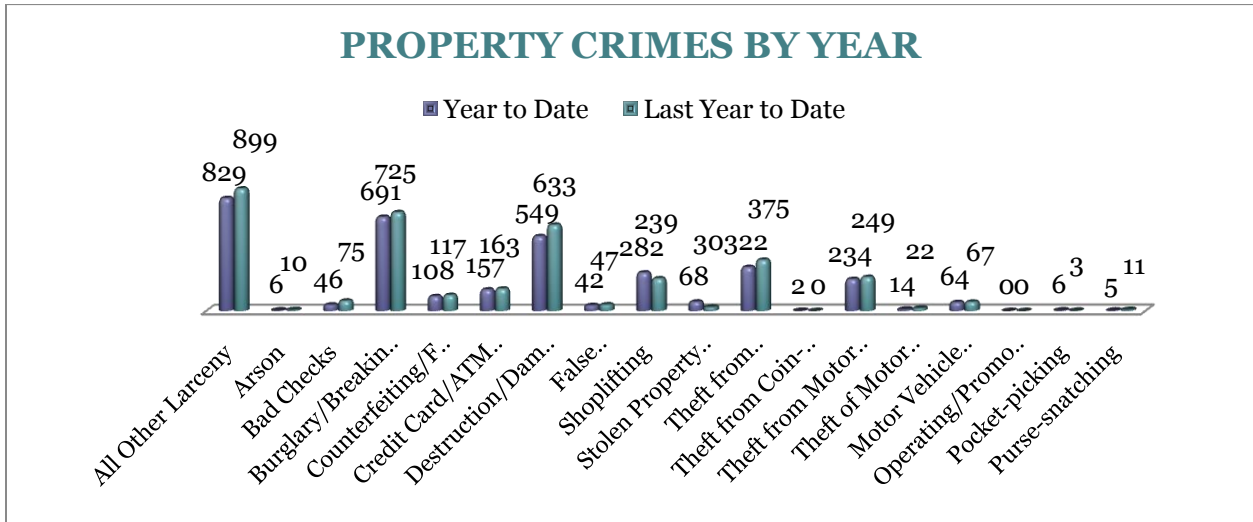
To date this year, 3,425 property offenses have occurred, a 7% decrease, comparing to the last year's data at this same time. The following significant changes are noted this year: All Other Larceny (down 8%),

Arson (down 4 offences), Burglary/Breaking or Entering (down 5%), Destruction/Damage/Vandalism (down 13%), and Theft from Building (down 14%)

# MONTHLY REPORT July 2012

August 13, 2012

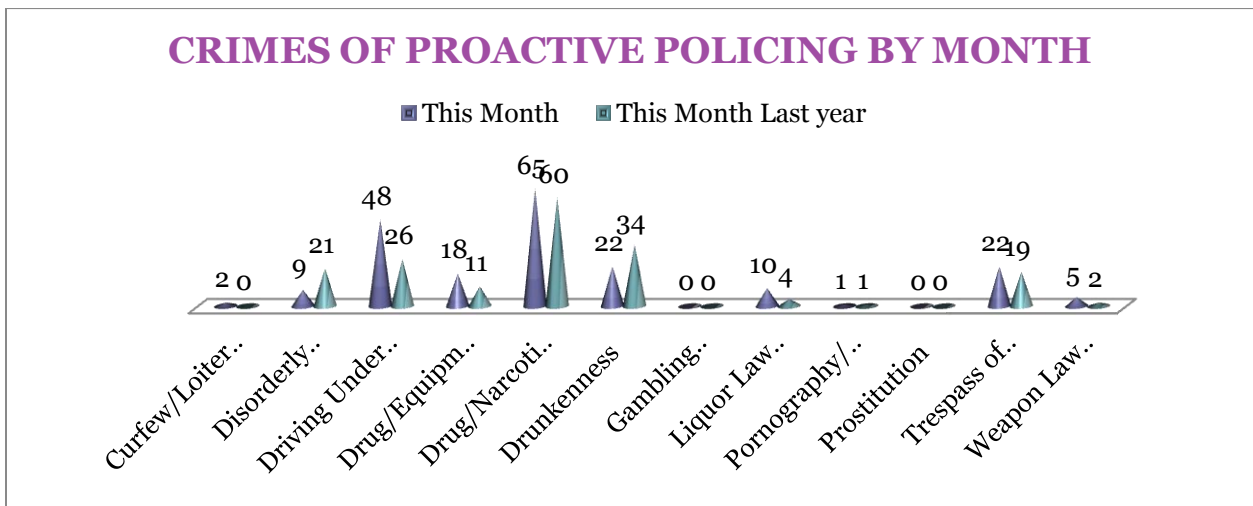
while Stolen Property Offenses increased by 127% and Shoplifting increased by 18%.



## CRIMES OF PROACTIVE POLICING

Crimes of Proactive Policing are those crimes that result from police officers actively policing the streets to combat certain types of street crime. As a chart below indicates, twelve crimes fall under this category. A total of 202 offenses have occurred this month, a 13% increase,

comparing to July last year. There is a significant increase in Driving Under the Influence (up 85%). Drunkenness is down 35%, Drug/Equipment Violations are up 7 offences and there were 6 more Liquor Law Violations reported, comparing to July of the last year.



To date for the year 2012, there have been 1,492 crimes of proactive policing reported, a 19% increase, comparing to the

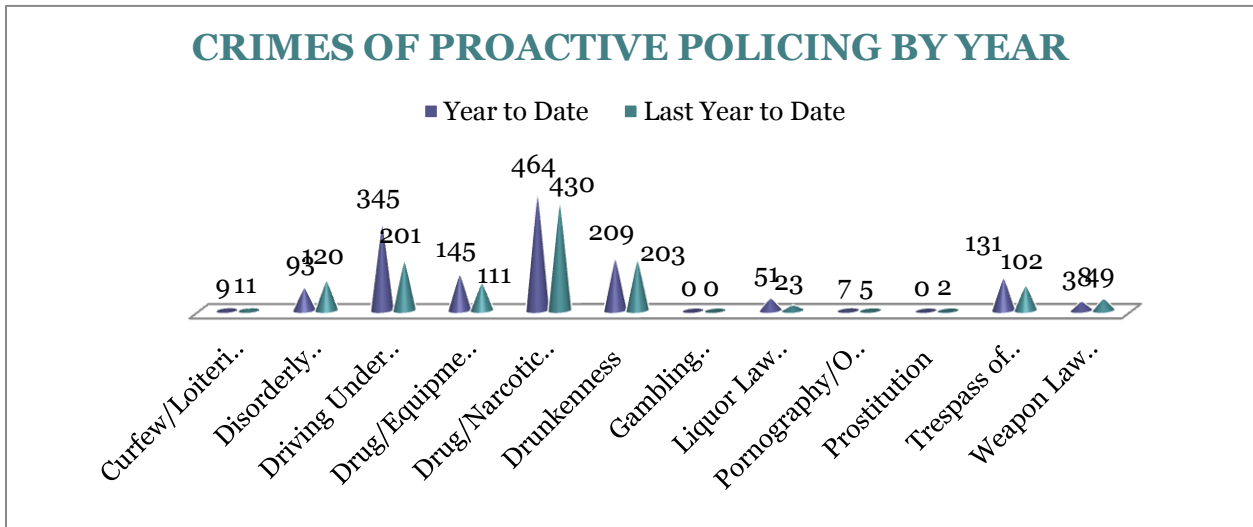
last year's to date data. Driving Under the Influence is significantly higher than at the same time last year (up 75%), Liquor Law

# MONTHLY REPORT July 2012

August 13, 2012

Violations increased by 28 offences this year, and Trespass of Real Property is up 28%. Weapon Law Violations decreased by

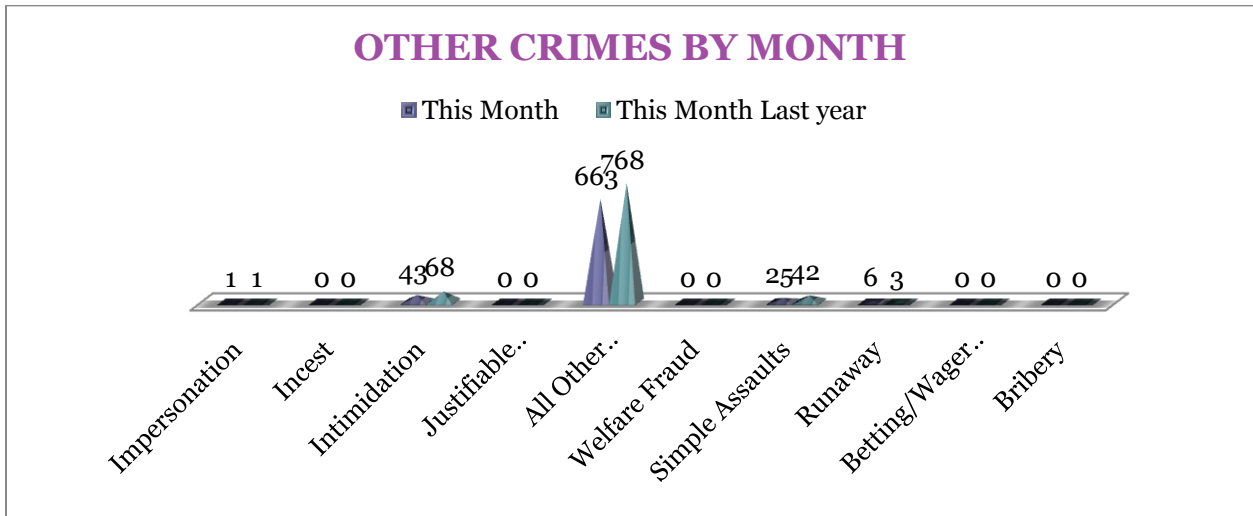
22% this year. There are no statistically significant changes noted for other offenses in this category.



## OTHER CRIMES

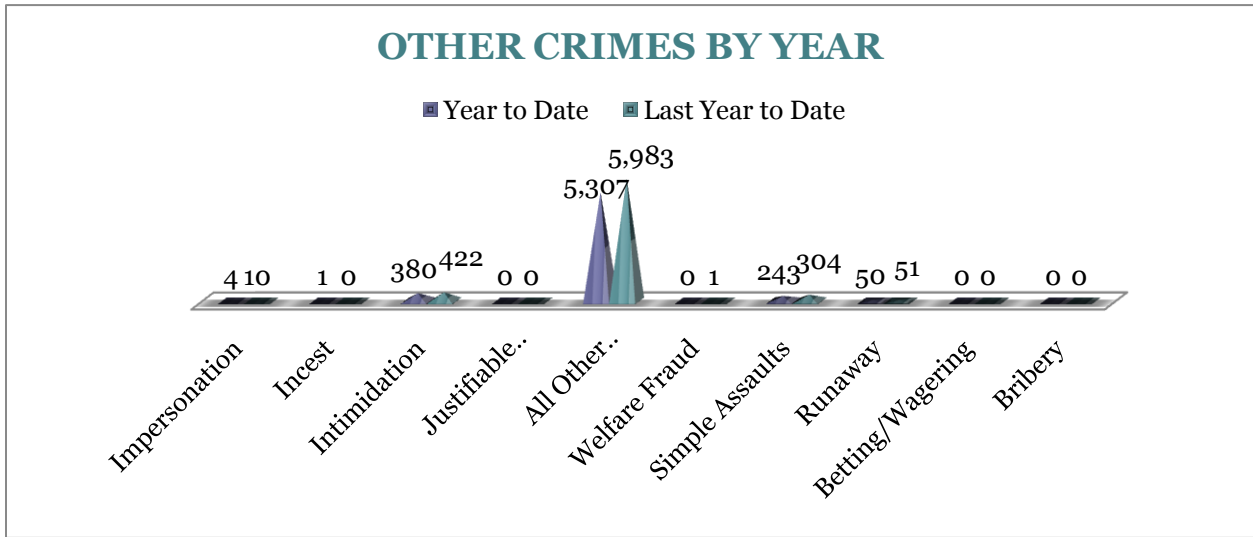
There are 10 crimes that fall into the Other Crimes category. This month, there have been a total of 738 Other Crimes, a 16% decrease, comparing to last July (n = 882). Runaways are up 3 offences. Intimidation is

down 37% and Simple Assaults are down 40%. No other significant changes are noted in this category of crimes this month.



To date this year, there have been 5,985 Other Crimes offenses, a 12% decrease comparing to the last year's to date data. A notable change is observable for Simple Assaults that decreased by 20%.

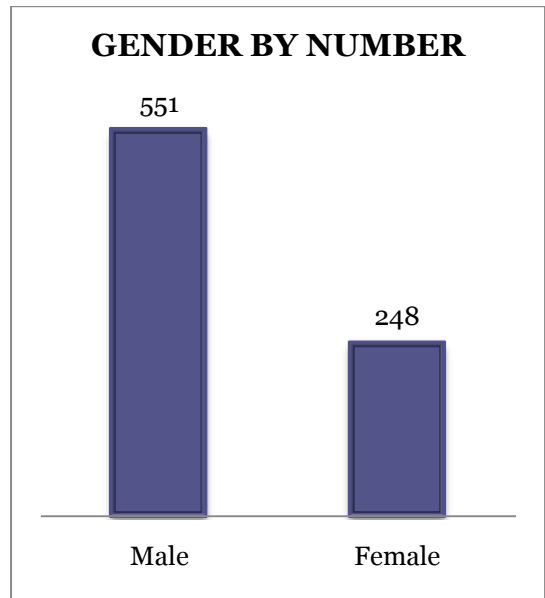
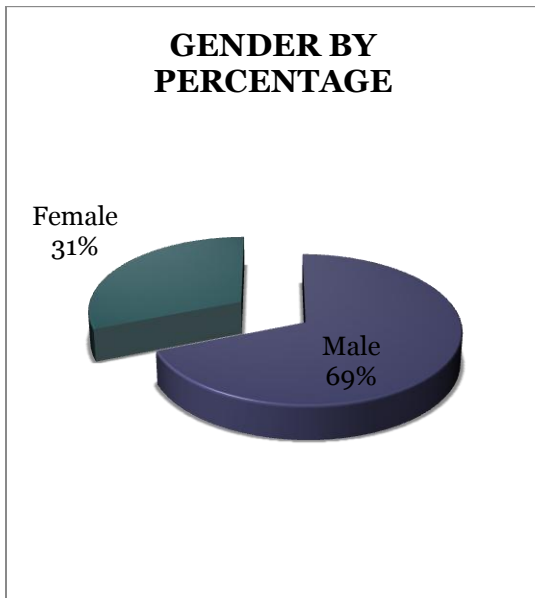
Impersonations are down 6 offences. No statistically significant changes have been observed for other offenses within this category, comparing to the last year's data.



#### ARREST DEMOGRAPHICS

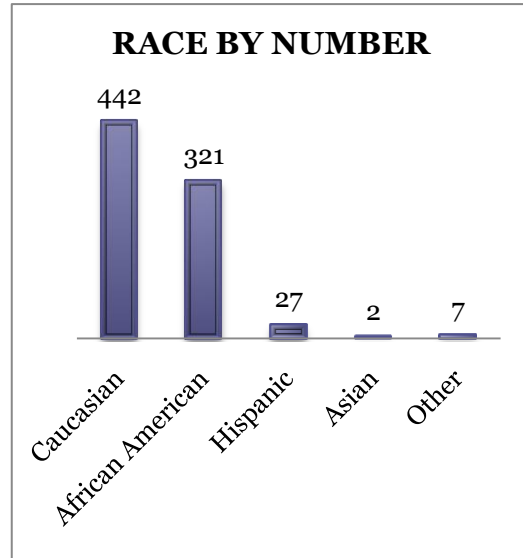
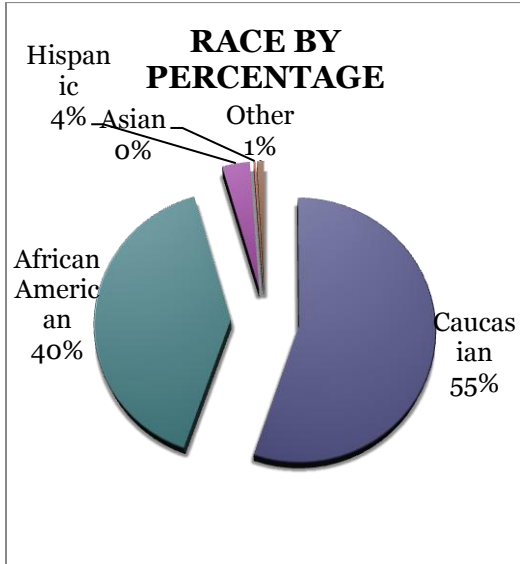
In July, there were a total of 799 arrests. Comparing with the last year's data for the month of July, there was a 12% decrease in arrests; that is 54 arrests per 100 crimes in July of this year, comparing to 53 arrests per 100 crimes last year, a 1.2% increase for arrests per 100 crimes. This section

breaks down this month's arrests by race and gender. The majority of offenders have been male ( $n = 551$ ), as opposed to female ( $n = 248$ ) and Caucasian ( $n = 442$ ) and African American ( $n = 321$ ) as opposed to Hispanic ( $n = 27$ ), Asian ( $n = 2$ ), or other/unknown/bi-racial ( $n = 7$ ).



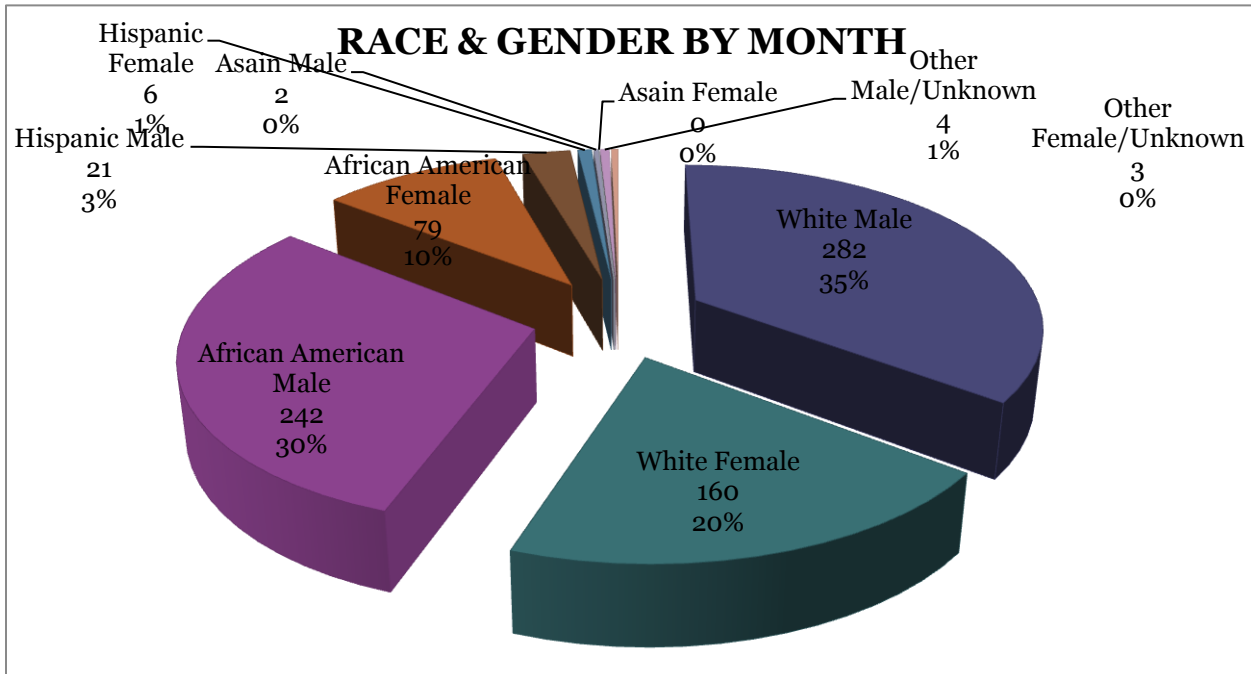
MONTHLY REPORT July 2012

August 13, 2012



Caucasian males make up the majority, 35%, of arrestees this month ( $n = 160$ ). African American males make up 30% of arrestees for the month of July ( $n = 242$ ). Caucasian females make up 20% ( $n = 160$ )

and African American females make up 10% ( $n = 79$ ). Hispanic males make up 3% ( $n = 21$ ), and Hispanic Females make up 1% ( $n = 6$ ) of arrestees.





## MONTHLY REPORT July 2012

August 13, 2012

### EMERGENCY 911

Also known as Public Safety Answering Point (PSAP), the Emergency 911 Division is responsible for answering all calls from public for emergency assistance, accessing the needed information to best assist, and then assigning the most efficient and effective emergency response. In addition,

this division is responsible for setting priority call dispatching to field units including Police, Fire, and EMS. Emergency 911 also maintains all records for radio logs, calls for service, and other emergency service data collections.

Calls by Type	This Month	This Month Last Year	YTD	Last YTD	Change By Month	Change YTD
Land Line E911	901	850	5,530	5,767	6%	-4%
Cell Phone E911	4,794	4,188	28,998	26,287	14%	10%
Admin Lines -non emer	16,643	17,714	120,061	115,833	-6%	4%
<b>TOTALS</b>	<b>22,338</b>	<b>22,752</b>	<b>154,589</b>	<b>147,887</b>	<b>-2%</b>	<b>5%</b>

Calls by Agency	This Month	This Month Last Year	YTD	Last YTD	Change By Month	Change YTD
Jonesboro PD Calls	6,755	7,414	48,926	47,300	-9%	3%
Craighead Cty Sheriff	1,286	1,214	8,867	8,669	6%	2%
Jonesboro Fire Dpt - dispatch	222	189	1,531	1,299	17%	18%
Jonesboro Fire Dpt - Med Asst	126	122	830	813	3%	2%
Craighead Cty - Fire	69	55	493	381	25%	29%
Craighead Cty - 1st Responder	113	86	761	602	31%	26%
Emerson Ambulance	297	277	2,104	1,745	7%	21%
Medic One	333	305	1,961	2,110	9%	-7%
Air Evac	0	2	5	6	-100%	-17%
Coroner	8	3	26	18	167%	44%
ARK State Police	15	11	104	102	36%	2%
Jonesboro Animal Control	4	25	15	149	-84%	-90%
Wreckers Called	194	159	1,180	1,068	22%	10%
<b>TOTALS</b>	<b>9,422</b>	<b>9,862</b>	<b>66,803</b>	<b>64,262</b>	<b>-4%</b>	<b>4%</b>

Calls by Municipality	This Month	This Month Last Year	YTD	Last YTD	Change By Month	Change YTD
Bay PD	154	121	809	705	27%	15%
Bono PD	296	252	1862	1259	17%	48%
Brookland PD	115	138	1174	997	-17%	18%
Caraway PD	84	95	1003	588	-12%	71%
Cash PD	47	238	212	641	-80%	-67%
Egypt PD	4	16	53	75	-75%	-29%
Lake City PD	130	147	1082	655	-12%	65%
Monette PD	104	185	1030	966	-44%	7%
<b>TOTALS</b>	<b>934</b>	<b>1,192</b>	<b>7,225</b>	<b>5,886</b>	<b>-22%</b>	<b>23%</b>

## MONTHLY REPORT July 2012

August 13, 2012

### UNIFORM PATROL DIVISION

The UPD is responsible for responding to calls into the Emergency - 911 Division by civilians and are normally the first responders. Jonesboro is divided into 6 patrol districts. Officers from UPD are assigned to a district and work the same

district every shift. In addition, when a Traffic Officer is not available, a UPD Officer will respond to traffic accidents and assist in directing traffic when necessary

Incidents	This Month	This Month Last Year	YTD	Last YTD	Change By Month	Change YTD
Calls for Service	6,755	7,424	49,556	45,917	-9%	8%
Complaints / Calls	4,127	4,554	27,973	28,707	-9%	-3%
Assists	1,094	1,051	8,285	8,568	4%	-3%
Incident Reports	788	1,102	5,975	6,822	-28%	-12%
Street Accidents	68	73	516	587	-7%	-12%
Private Property Accidents	31	45	300	309	-31%	-3%
Traffic Stops	1,971	2,162	14,396	14,779	-9%	-3%
Traffic Citations	541	709	4,758	5,015	-24%	-5%
Written Warnings	718	748	6066	4,872	-4%	25%
DWI	38	25	282	164	52%	72%
Mis. Arrests	415	517	3,258	3,499	-20%	-7%
Felony Arrests	76	93	641	661	-18%	-3%
Warrants Served	1,278	1,246	9,524	10,144	3%	-6%
Alarms	395	326	2,366	2,258		
<b>TOTALS</b>	<b>18,295</b>	<b>20,075</b>	<b>133,896</b>	<b>132,302</b>	<b>-9%</b>	<b>1%</b>
Hours Worked	8,244	8,527	62,300	69,982	-3%	-11%

### PROWL

The Prowl unit is a uniformed street crimes unit specializing in criminal patrol, narcotics enforcement, gang investigation, and prostitution activity. The unit conducts directed patrols, investigates citizen

complaints of street-level criminal activity, and directly assists the 2<sup>nd</sup> Judicial Drug Task Force. PROWL also assists any division within the Jonesboro Police Department at any time when needed.

## MONTHLY REPORT July 2012

August 13, 2012

Incidents	This Month	This Month Last Year	YTD	Last YTD	Change By Month	Change YTD
Street Accidents	0	0	0	0	N/C	N/C
Private Property Accidents	0	0	1	0	N/C	N/C
Traffic Citations	31	25	243	235	24%	3%
DWI	0	0	1	0	N/C	N/C
Mis. Arrests	187	80	1,415	779	134%	82%
Felony Arrests	19	37	193	212	-49%	-9%
Drug Arrests	22	36	196	218	-39%	-10%
Public Intoxication Arrests	0	0	1	0	N/C	N/C
Calls For Service	139	93	681	646	49%	5%
Alarms	0	0	0	0	N/C	N/C
Parking Citations	0	0	0	0	N/C	N/C
Written Warnings	85	31	405	319	174%	27%
Assists	0	0	0	0	N/C	N/C
<b>TOTALS</b>	<b>483</b>	<b>302</b>	<b>3,136</b>	<b>2,409</b>	<b>60%</b>	<b>30%</b>

Value of Drugs Seized	\$ 5,650	\$ 3,090	\$ 69,835	\$ 51,520	83%	36%
Value of Asstes Seized	\$ 200	\$ 39,191	\$ 32,618	\$ 85,355	-99%	-62%
Patrol Miles	6,850	5,250	42,600	36,720	30%	16%

### CRIMINAL INVESTIGATIVE DIVISION

The CID is responsible for conducting follow-up investigations into criminal acts reported to the Jonesboro Police Department. The primary goal is to collect and present evidence that conclusively

leads to a successful arrest. Additionally, CID is charged with clearing additional crimes, recovering stolen property, preventing additional crimes, and gathering intelligence information.

Investigations	This Month	This Month Last Year	YTD	Last YTD	Change By Month	Change YTD
Criminal Investigations Assigned	64	113	481	640	-43%	-25%
Criminal Investigations Closed	64	60	354	509	7%	-30%
Cleared by Arrests	43	48	243	364	-10%	-33%
Unfounded	4	3	39	45	33%	-13%
Exceptionally Cleared	5	11	33	58	-55%	-43%
Filed With Prosecutors Office	11	2	33	25	450%	32%
<b>TOTALS</b>	<b>191</b>	<b>237</b>	<b>1183</b>	<b>1641</b>	<b>-19%</b>	<b>-28%</b>

Crimes Against Persons	This Month	This Month Last Year	YTD	Last YTD	Change By Month	Change YTD
Criminal Investigations Assigned	24	24	126	141	0%	-11%
Criminal Investigations Closed	24	21	119	132	14%	-10%
Cleared by Arrests	17	15	86	97	13%	-11%
Unfounded	2	0	10	9	N/C	11%
Execeptionally Cleared	2	5	9	21	-60%	-57%
Filed With Prosecutors Office	3	1	14	9	200%	56%
<b>TOTALS</b>	<b>72</b>	<b>66</b>	<b>364</b>	<b>409</b>	<b>9%</b>	<b>-11%</b>

## MONTHLY REPORT July 2012

August 13, 2012

Property Crimes	This Month	This Month Last Year	YTD	Last YTD	Change By Month	Change YTD
Criminal Investigations Assigned	36	84	326	458	-57%	-29%
Criminal Investigations Closed	33	41	208	325	-20%	-36%
Cleared by Arrests	24	32	151	259	-25%	-42%
Unfounded	2	2	25	31	0%	-19%
Exceptionally Cleared	3	6	23	44	-50%	-48%
Filed With Prosecutors Office	4	1	11	9	300%	22%
<b>TOTALS</b>	<b>102</b>	<b>166</b>	<b>744</b>	<b>1126</b>	<b>-39%</b>	<b>-34%</b>

Crimes Against Children	This Month	This Month Last Year	YTD	Last YTD	Change By Month	Change YTD
Criminal Investigations Assigned	2	3	14	19	-33%	-26%
Criminal Investigations Closed	6	4	22	26	50%	-15%
Cleared by Arrests	2	1	10	8	100%	25%
Unfounded	0	1	5	12	-100%	-58%
Exceptionally Cleared	0	0	1	0	N/C	N/C
Filed With Prosecutors Office	4	0	9	7	N/C	29%
<b>TOTALS</b>	<b>14</b>	<b>9</b>	<b>61</b>	<b>72</b>	<b>56%</b>	<b>-15%</b>
Miscellaneous Investigations Assigned	2	3	3	4	N/C	-25%
Miscellaneous Investigations Cleared	1	2	11	15	N/C	-27%

### WARRANTS

The Warrants Division is responsible for serving warrants, criminal summonses, and subpoenas that are issued by the District Court. On city court days, the Warrants Division provides a bailiff for court and a transport officer. In addition, this Division

is responsible for transporting wanted persons arrested in other jurisdictions back to Jonesboro. The STEP program operates within this division and is a grant-funded operation in which officers can get paid overtime to enforce the safety belt law.

Arrests	This Month	This Month Last Year	YTD	Last YTD	Change By Month	Change YTD
Misdemeanor	1129	1432	7256	8141	-21%	-11%
Felony	0	0	2	2	N/C	0%
<b>Total Arrests</b>	<b>1129</b>	<b>1432</b>	<b>7258</b>	<b>8143</b>	<b>-21%</b>	<b>-11%</b>

Warrants by Activity	This Month	This Month Last Year	YTD	Last YTD	Change By Month	Change YTD
Subpoenas	492	450	2525	2547	9%	-1%
Commitments	0	4	17	14	-100%	21%
Traffic Citations	1	5	15	14	-80%	7%
Complaints	0	0	7	2	N/C	250%
Assist	0	0	1	0	N/C	N/C
Alarms	0	0	0	0	N/C	N/C

Hours by Activity	This Month	This Month Last Year	YTD	Last YTD	Change By Month	Change YTD
SI Criminal	216	247.5	1417.5	1614.5	-13%	-12%
Court	126.5	103.5	825	811.33	22%	2%
Prisoner Transport	22.5	24	207	193.5	-6%	7%

## MONTHLY REPORT July 2012

August 13, 2012

Hours Worked	This Month	This Month Last Year	YTD	Last YTD	Change By Month	Change YTD
Regular Hours Worked	585	599	5829	4413.5	-2%	32%
Overtime Hours Worked	8	12	46	68.5	-33%	-33%
<b>TOTAL Hours Worked</b>	<b>593</b>	<b>611</b>	<b>5875</b>	<b>4482</b>	<b>-3%</b>	<b>31%</b>

Mileage	This Month	This Month Last Year	YTD	Last YTD	Change By Month	Change YTD
<b>Total Mileage</b>	<b>2909</b>	<b>3303</b>	<b>18298</b>	<b>19032</b>	<b>-12%</b>	<b>-4%</b>

STEP	This Month	This Month Last Year	YTD	Last YTD	Change By Month	Change YTD
DWI Arrest	0	1	7	4	-100%	75%
DUI Arrest	0	0	0	0	N/C	N/C
Traffic Citations	90	216	1583	1031	-58%	54%
Felony Arrests	1	0	6	4	N/C	50%
Drug Arrests	0	0	1	1	N/C	0%
<b>STEP TOTALS</b>	<b>91</b>	<b>217</b>	<b>1597</b>	<b>1040</b>	<b>-58%</b>	<b>54%</b>

<b>STEP Hours Worked</b>	<b>75.5</b>	<b>139</b>	<b>1035.5</b>	<b>471</b>	<b>-46%</b>	<b>120%</b>
<b>STEP Miles Driven</b>	<b>478</b>	<b>1293</b>	<b>5244.4</b>	<b>4683</b>	<b>-63%</b>	<b>12%</b>

### DRUG TASK FORCE

The DTF is responsible for investigating major drug traffickers in the area, including all types of illegal drugs. They

work closely with local, state, and federal agencies to eradicate drugs from the community.

INVESTIGATIONS	This Month	This Month Last Year	YTD	Last YTD	Change By Month	Change YTD
Opened	17	10	172	181	70%	-5%
Closed	15	14	137	180	7%	-24%
<b>TOTAL</b>	<b>32</b>	<b>24</b>	<b>309</b>	<b>361</b>	<b>33%</b>	<b>-14%</b>

With Nexus to Jonesboro	This Month	This Month Last Year	YTD	Last YTD	Change By Month	Change YTD
Opened	15	14	163	188	7%	-13%
Closed	0	0	0	0	N/C	N/C
<b>TOTAL</b>	<b>15</b>	<b>14</b>	<b>163</b>	<b>188</b>	<b>7%</b>	<b>-13%</b>

Outside Jonesboro (No Known Nexus)	This Month	This Month Last Year	YTD	Last YTD	Change By Month	Change YTD
Opened	1	1	0	8	1300%	-100%
Closed	0	0	0	0	0%	N/C
<b>TOTAL</b>	<b>0</b>	<b>1</b>	<b>0</b>	<b>8</b>	<b>-100%</b>	<b>-100%</b>

ASSISTANCE RENDERED	This Month	This Month Last Year	YTD	Last YTD	Change By Month	Change YTD
Assist to Outside Agencies	16	0	56	102	N/C	-45%
Assist to Jonesboro UPD/CID	11	13	90	89	-15%	1%

## MONTHLY REPORT July 2012

August 13, 2012

ARRESTS	This Month	This Month Last Year	YTD	Last YTD	Change By Month	Change YTD
Miscellaneous	3	5	49	56	-40%	-13%
Felony	16	22	177	192	-27%	-8%
Marijuana	2	6	25	58	-67%	-57%
Cocaine	1	1	13	10	0%	30%
Crack Cocaine	1	1	19	16	0%	19%
Methamphetamine/ICE	6	10	54	74	-40%	-27%
LSD	0	1	0	1	-100%	-100%
Ecstasy (MDMA or Other Designer Drug)	0	0	0	0	N/C	N/C
Prescription	3	1	12	17	200%	-29%
Opiates (Heroine, Opium)	1	0	1	1	N/C	0%
Labs	1	0	5	16	N/C	-69%
All Other Drug Offenses	2	0	23	0	N/C	N/C

ASSET FORFEITURE	This Month	This Month Last Year	YTD	Last YTD	Change By Month	Change YTD
Vehicles Seized (No.)	0	0	0	0	N/C	N/C
Value of Assets Seized(Includes Value of vehicles)	\$16,326	\$0	\$23,726	\$39,105	N/C	-39%
Asset Value Awarded to Jonesboro PD (State)	\$0	\$0	\$0	\$0	N/C	N/C
Asset Value Awarded to Jonesboro PD (Federal)	\$0	\$0	\$0	\$0	N/C	N/C
Asset Value Awarded to Jonesboro PD (Total)	\$0	\$0	\$0	\$0	N/C	N/C

ARRESTS DEMOGRAPHICS	This Month	This Month Last Year	YTD	Last YTD	Change By Month	Change YTD
White	12	9	78	124	33%	-37%
African American	3	3	52	65	0%	-20%
Latino	3	0	16	5	N/C	220%
Asian	0	0	0	0	N/C	N/C
Other/Bi-Racial	0	0	0	0	N/C	N/C
Male	13	5	103	148	160%	-30%
Female	5	7	43	43	-29%	0%
White Male	9	3	46	84	200%	-45%
White Female	3	6	29	36	-50%	-19%
African American Male	2	2	41	58	0%	-29%
African American Female	1	1	10	5	0%	100%
Latino Male	2	0	13	5	N/C	160%
Latino Female	1	0	1	0	N/C	N/C
Asian Male	0	0	0	0	N/C	N/C
Asian Female	0	0	0	0	N/C	N/C
Other/Bi-Racial Male	0	0	0	0	N/C	N/C
Other/Bi-Racial Female	0	0	0	0	N/C	N/C

### TRAFFIC

Comprised of three motor units and three Chargers, the Traffic Enforcement Unit responds to traffic accidents and provides increased enforcement in particularly challenging areas. This unit also provides

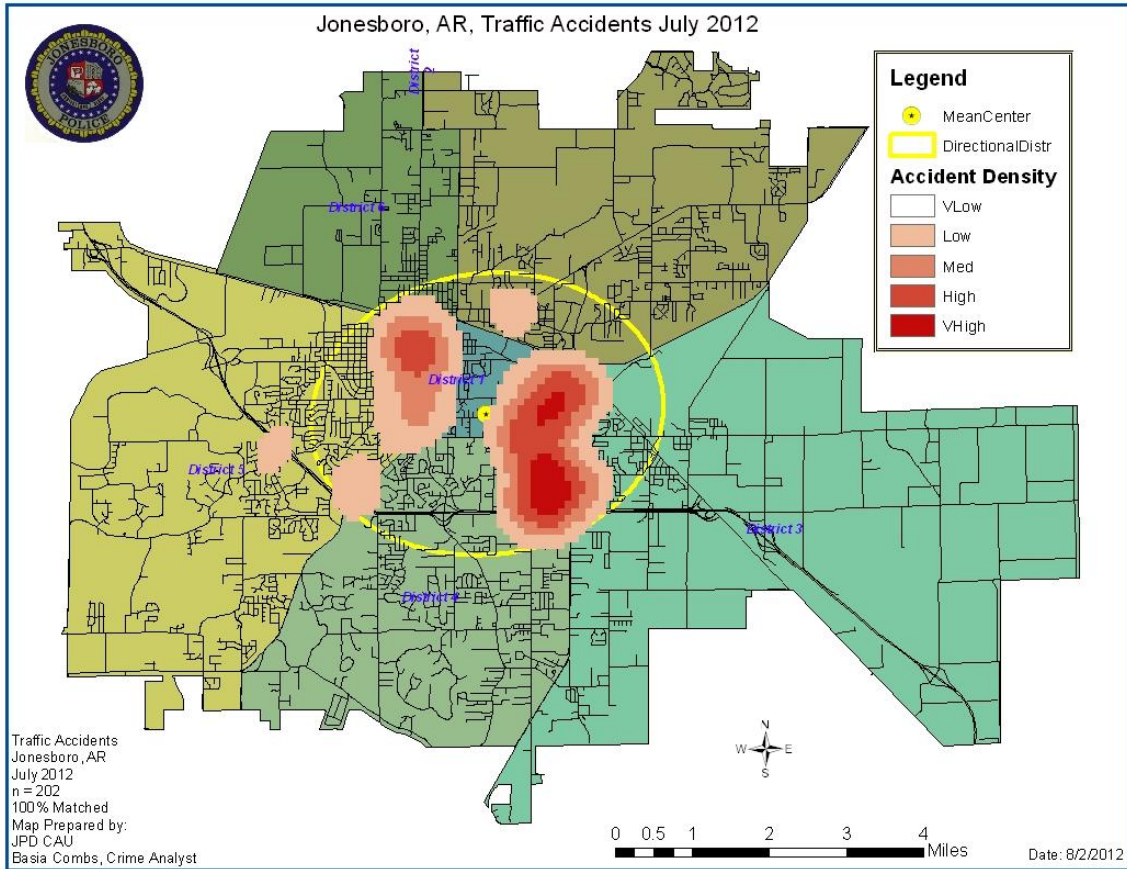
extra coverage for specific congestion problems and special events in the community. Last, they work details targeting specific issues, such as DWI enforcement and traffic safety checkpoints.

# MONTHLY REPORT July 2012

August 13, 2012

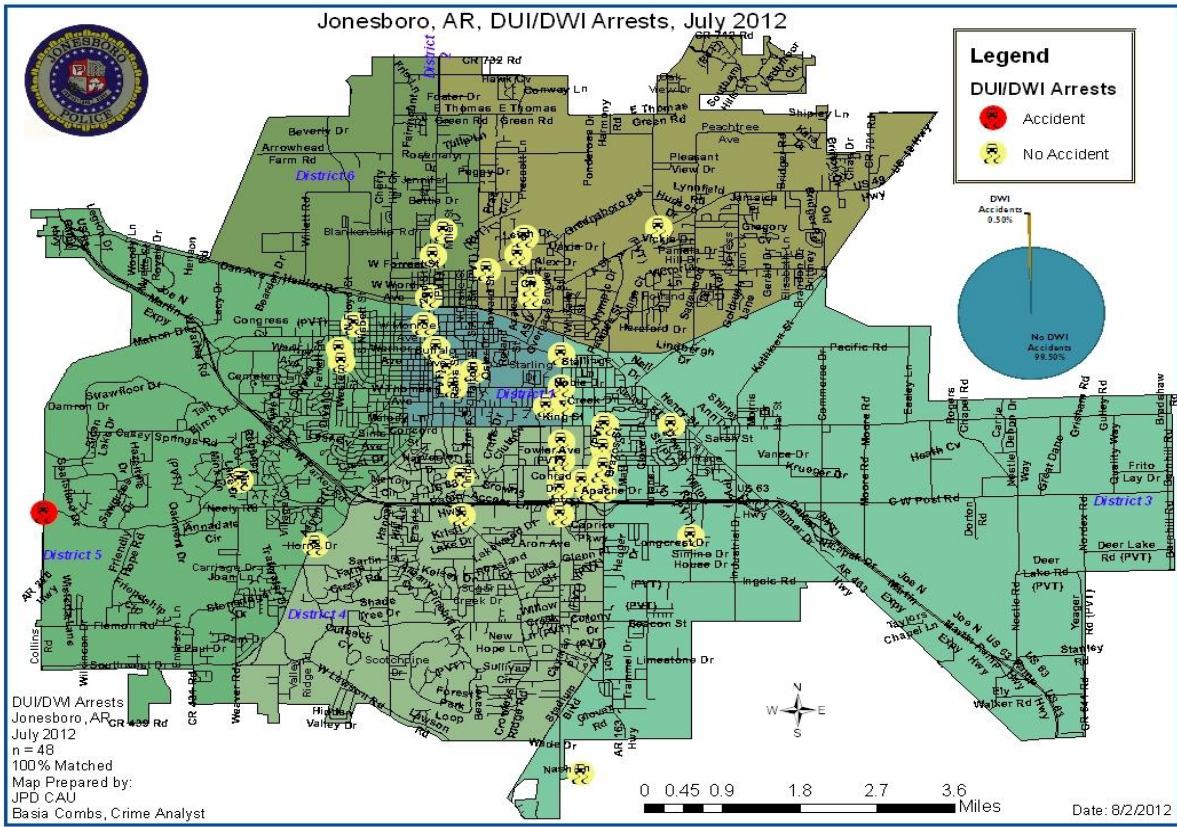
Incidents	This Month	This Month Last Year	YTD	Last YTD	Change By Month	Change YTD
Street Accidents	138	110	924	872	25%	6%
Private Property Accidents	42	31	257	287	35%	-10%
Traffic Citations	131	229	966	1258	-43%	-23%
DWI	1	0	23	24	N/C	-4%
Mis. Arrests	3	11	103	134	-73%	-23%
Felony Arrests	0	1	2	13	-100%	-85%
Drug Arrests	0	0	0	0	N/C	N/C
Public Intoxication Arrests	0	0	0	1	N/C	-100%
Calls For Service	234	247	1700	1890	-5%	-10%
Alarms	0	1	0	11	-100%	-100%
Parking Citations	0	0	0	0	N/C	N/C
Written Warnings	109	67	802	574	63%	40%
<b>TOTALS</b>	<b>658</b>	<b>697</b>	<b>4777</b>	<b>5064</b>	<b>-6%</b>	<b>-6%</b>

Value of Asstes Seized	\$0	\$0	\$0	\$0	N/C	N/C
Patrol Miles	4,288	4,229	41,960	33,050	1%	27%
Hours Worked	851	681.5	5845.5	5279	25%	11%



# MONTHLY REPORT July 2012

August 13, 2012



## PARKING ENFORCEMENT

The Parking Enforcement Division is responsible for enforcing parking laws in the downtown area. This service provides a

safe and convenient parking situation for the public.

CITATIONS ISSUED	This Month	This Month Last Year	YTD	Last YTD	Change By Month	Change YTD
Citations	48	38	208	247	26%	-16%
Verbal Warnings	21	9	106	50	N/C	N/C

MINUTES BY ACTIVITY	This Month	This Month Last Year	YTD	Last YTD	Change By Month	Change YTD
Office	755	580	1,650	3,755	30%	-56%
Admin(Non-Office)	0	665	2,515	6,440	-100%	-61%
Community	0	0	0	0	N/C	N/C
Training	0	0	0	0	N/C	N/C
Patrol	6,565	6,645	34,300	37,280	-1%	-8%



## MONTHLY REPORT July 2012

August 13, 2012

### ANIMAL CONTROL

The Animal Control Division is responsible for educating the public on safe and humane issues regarding animal treatment, enforcing all animal laws and ordinances, assisting the public in resolving animal

issues, and protecting the safety and welfare of the citizens and animals in this community.

Incidents	This Month 04/12	This Month Last Year	YTD 2012	Last YTD 2011	Change By Month	Change YTD
Barking Complaints	3	4	57	91	-25%	-37%
Bite Reports	8	9	57	82	-11%	-30%
Door Hangers	30	38	298	219	-21%	36%
Welfare Checks	74	150	630	677	-51%	-7%
Advised of Rights	630	777	5,677	3,713	-19%	53%
Incident Reports	2	2	43	28	0%	54%
Gone on Arrival	64	34	398	164	88%	143%
Complaints	767	749	5,202	3,872	2%	34%
Desk Complaints	1,919	1,996	10,200	9,593	-4%	6%
Captured Dogs	140	151	1,003	846	-7%	19%
Captured Cats	28	18	68	79	56%	-14%
Captured Wildlife	75	28	240	145	168%	66%
Chemical Captures	2	1	20	20	100%	0%
Traps	55	7	271	65	686%	317%
Deceased Animals	86	47	593	401	83%	48%
Assist J.P.D.	15	9	43	57	67%	-25%
Assist C.S.O.	2	0	3	10	N/C	-70%
Public Relations	1,310	1,022	4,204	4,583	28%	-8%
CITATIONS ISSUED	33	98	359	769	-66%	-53%
WARNINGS ISSUED	24	70	249	398	-66%	-37%

Incidents	This Month 04/12	This Month Last Year	YTD 2012	Last YTD 2011	Change By Month	Change YTD
Physical Arrests	2	18	10	29	-89%	-66%
City Warrants Served	12	26	37	184	-54%	-80%
County Warrants Served	0	2	14	14	-100%	0%
Felony Bench Warrants	1	2	2	3	-50%	-33%
Euthanized	93	111	512	407	-16%	26%
Deceased Animals Landfill lbs.	2,640	4,260	24,076	21,040	-38%	14%
Wildlife Euthanized	75	28	230	145	168%	59%
Sent to Rescue Centers	1	8	51	17	-88%	200%
Adoptions	45	51	326	246	-12%	33%
Miles Driven	7,958	6,129	49,539	42,760	30%	16%

*\* Above numbers are based on work performed by 4 officers*

### FLEET MAINTNANCE

The Fleet Maintenance is responsible for all of the police vehicle maintenance upkeep, cleanliness, and purchasing. In addition,

this Division handles most of the purchasing of equipment, supplies, and uniforms for all of the Police Department.

## MONTHLY REPORT July 2012

August 13, 2012

Repair Costs by Model Year	This Month	This Month Last Year	YTD	Last YTD	Change By Month	Change YTD
95-99	\$0.00	\$0.00	\$0.00	\$0.00	N/C	N/C
2000	\$0.00	\$0.00	\$0.00	\$159.44	N/C	-100%
2001	\$0.00	\$0.00	\$300.46	\$11.61	N/C	2488%
2002	\$0.00	\$0.00	\$0.00	\$405.65	N/C	-100%
2003	\$0.00	\$0.00	\$0.00	\$0.00	N/C	N/C
2004	\$0.00	\$0.00	\$1,414.43	\$1,295.74	N/C	9%
2005	\$0.00	\$1,187.78	\$712.04	\$7,259.99	-100%	-90%
2006	\$1,566.55	\$6,081.02	\$25,877.40	\$20,956.47	-74%	23%
2007	\$1,505.16	\$626.23	\$8,188.94	\$9,847.38	140%	-17%
2008	\$0.00	\$11.61	\$2,116.72	\$1,355.14	-100%	56%
2009	\$11.61	\$23.22	\$1,640.33	\$259.52	N/C	N/C
2010	\$11.61	\$0.00	\$500.89	\$433.45	N/C	N/C
2011	\$156.09	\$0.00	\$952.88	\$11.61	N/C	N/C
2012	\$0.00	n/a	\$0.00	n/a	N/C	N/C
<b>Totals</b>	<b>\$3,251.02</b>	<b>\$7,929.86</b>	<b>\$41,704.09</b>	<b>\$41,996.00</b>	<b>-59%</b>	<b>-1%</b>

Routine Preventative Maintenance by Model Year	This Month	This Month Last Year	YTD	Last YTD	Change By Month	Change YTD
95-99	\$0.00	\$0.00	\$72.00	\$0.00	N/C	N/C
2000	\$0.00	\$0.00	\$20.00	\$40.00	N/C	-50%
2001	\$0.00	\$0.00	\$0.00	\$68.00	N/C	-100%
2002	\$0.00	\$20.00	\$100.46	\$50.30	-100%	100%
2003	\$0.00	\$20.00	\$172.00	\$69.00	-100%	149%
2004	\$77.45	\$193.00	\$295.45	\$1,465.51	-60%	-80%
2005	\$122.00	\$961.95	\$649.35	\$2,980.68	-87%	-78%
2006	\$983.49	\$1,574.25	\$10,627.10	\$10,785.10	-38%	-1%
2007	\$338.41	\$1,579.79	\$6,802.78	\$7,100.13	-79%	-4%
2008	\$267.25	\$170.00	\$2,387.06	\$1,680.19	57%	42%
2009	\$111.00	\$188.50	\$5,579.42	\$2,309.43	N/C	N/C
2010	\$228.53	\$0.00	\$1,892.99	\$1,455.98	N/C	N/C
2011	\$226.50	\$40.00	\$1,213.50	\$100.00	N/C	N/C
2012	\$20.00	n/a	\$372.81	n/a	N/C	N/C
<b>Totals</b>	<b>\$2,374.63</b>	<b>\$4,747.49</b>	<b>\$30,184.92</b>	<b>\$28,104.32</b>	<b>-50%</b>	<b>7%</b>

### RECORDS

The Records Division is responsible for providing administrative and clerical support to the department. Major responsibilities include entering the accident and incident reports and tickets into the records database management

system, assisting the general public for report requests, performing criminal backgrounds, serving as a switchboard at times, performing validations, and setting up and managing the payment plans out of court.

## MONTHLY REPORT July 2012

August 13, 2012

RECORDS	This Month	This Month Last Year	YTD	Last YTD	Change By Month	Change YTD
Incident/Arrest Reports Processed	1889	1386	9533	9285	36%	3%
Accident Reports Processed	202	180	1404	1405	12%	0%
Citations Processed	3908	4625	29764	31366	-16%	-5%
Warnings Processed	846	633	6106	4287	34%	42%
Backgrounds	24	12	101	129	100%	-22%
Fingerprints	87	78	801	685	12%	17%
Photos	1	1	4	16	0%	-75%
Accident Requests	141	82	857	686	72%	25%
Accident Requests Online	104	113	747	1107	-8%	-33%
<b>TOTALS</b>	<b>7,202</b>	<b>7,110</b>	<b>49,317</b>	<b>48,966</b>	<b>1%</b>	<b>1%</b>

### PROFESSIONAL STANDARDS

The Office of Professional Standards, a unit within Administration, is charged with the compilation and updating of an extensive set of policies and procedures and providing a general operations guideline and code of conduct for officers to follow.

In the event that a member of the public does experience a negative interaction with an officer, mechanisms are in place for them to lodge a complaint. All complaints are reviewed and investigations completed in a timely manner. (See next page for details)

Professional Standards	This Month	This Month Last Year	YTD	Last YTD	Change By Month	Change YTD
Opened (TOTAL)	3	2	45	25	50%	80%
Closed	2	2	42	23	0%	83%
Inquiries	1	1	41	20	0%	105%
Formal Investigations	2	1	4	6	100%	-33%
Sustained	1	2	33	19	-50%	74%
Not-Sustained	0	0	1	1	N/C	0%
Exonerated	1	0	2	0	N/C	N/C
Unfounded	2	0	8	3	N/C	167%

END OF REPORT