

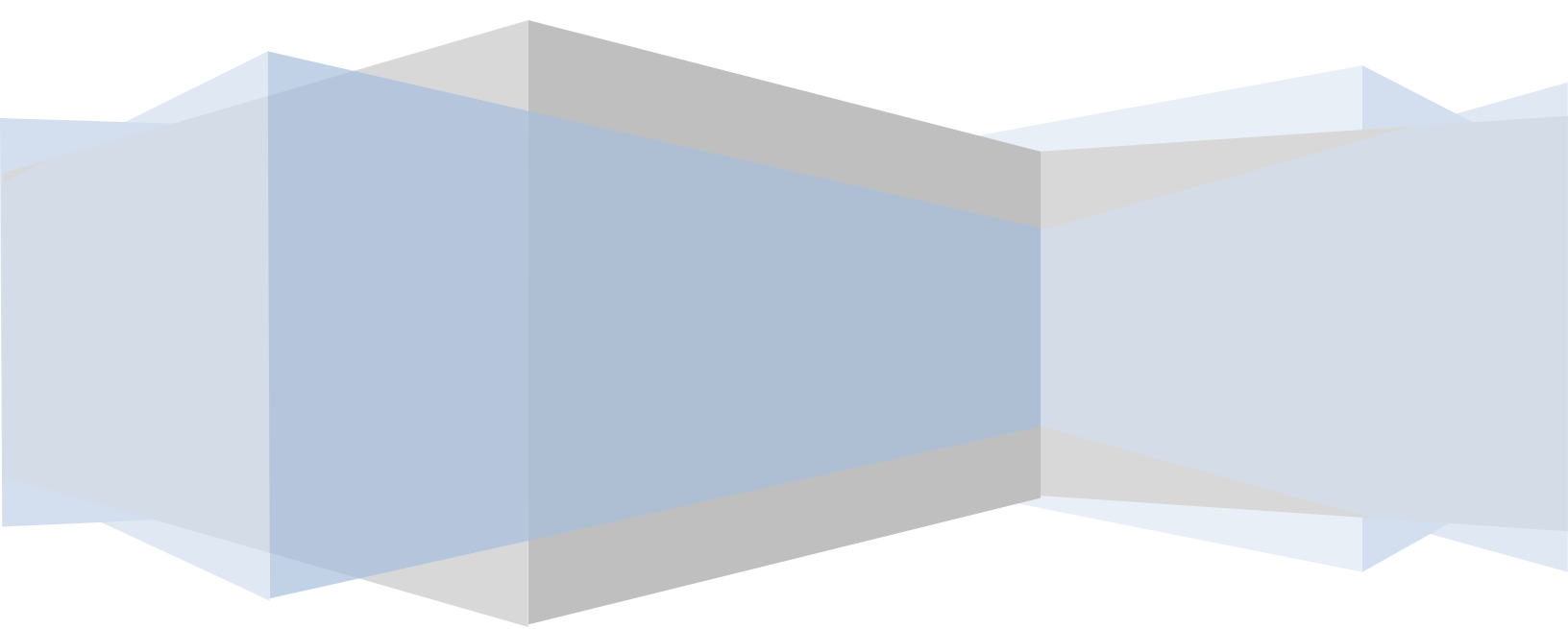
Jonesboro Police Department



Monthly Report

January 2011

Basia Combs, Crime Analyst



EXECUTIVE SUMMARY

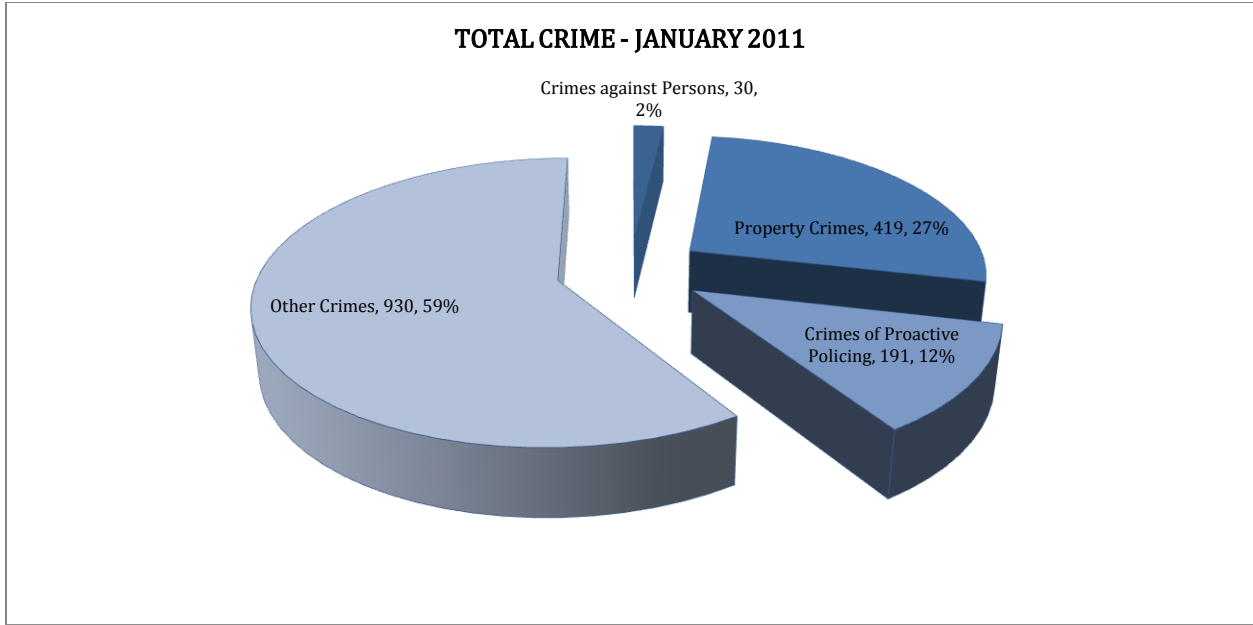
The purpose of the Jonesboro Police Department Monthly Report is to compile data into one integrated report for review, allowing for a seamless flow of information for better decision-making. After each department collates their monthly numbers and sends it to the Office of Crime Analysis, it is organized into sections of departmental data, analyzed and packaged, and finally disseminated to department heads, the Chief of Police, the City Mayor, and the City Council. Major sections include Crime Analysis, Emergency 911, Uniform Police Division, Prowl, Criminal Investigative Division, Warrants, Drug Task Force, Traffic, Parking Enforcement, Animal Control, Fleet Maintenance, Records, and Professional Standards.

CRIME ANALYSIS

The Crime Analysis division consists of one Crime Analyst. The Crime Analyst position is responsible for the analysis and dissemination of crime activity data and the collection and maintenance of crime intelligence information for the city of Jonesboro. Additionally, the Crime Analyst is charged with providing the department with current and accurate crime maps, presenting crime activity data to audiences of interest, and responding to requests for crime data from civilians and departmental staff. Data exported from this division is used by field agents for more effective, efficient policing, administration for improved staffing decisions, and the Mayor's office for community decision making and enhanced public relations. The following section is broken down into Total Crime, Crimes against Persons, Property Crimes, Crimes of Proactive Policing, Other Crimes, and Arrest Demographics. *Since it is only one month into the year, all year to date data will be the same as this month's data and therefore, will not be reported separately.*

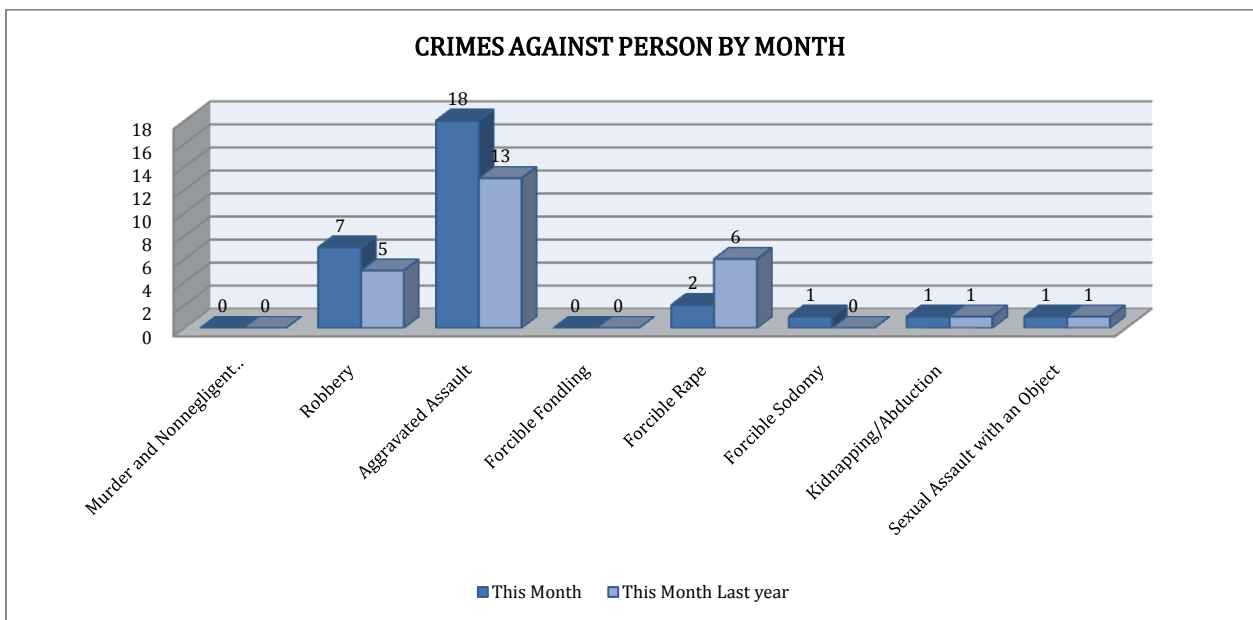
TOTAL CRIME

The crime activity for the month of January, 2011, is at a total of 1,570 offenses, up from 1,495 offenses last January, a 7% increase. Other Crimes absorb the majority, 59%, of this month's crime activity ($n = 930$). Property crimes fall in second place with 27% ($n = 419$). Following in third and fourth places are crimes of proactive policing at 12% ($n = 191$) and crimes against persons at 2% ($n = 30$).



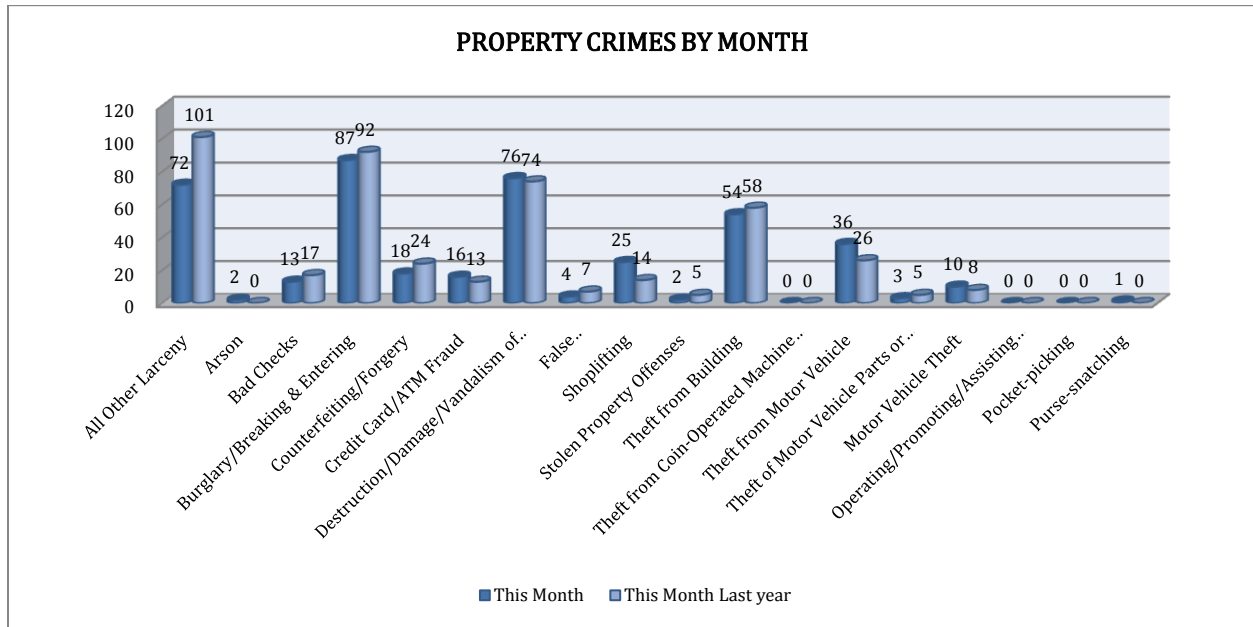
CRIMES AGAINST PERSONS

There are 8 crimes that make up this section. There were a total of 30 offenses in this area this month, up from 26 last January, a 15% increase. The following chart demonstrates this month's activity compared to January of last year's activity. Aggravated Assaults are higher, up to 18 from 13, a 38% increase and so are Robberies, a slight increase by 2 for this month. Forcible Rape is down to 2 from 6, a 67% decrease.



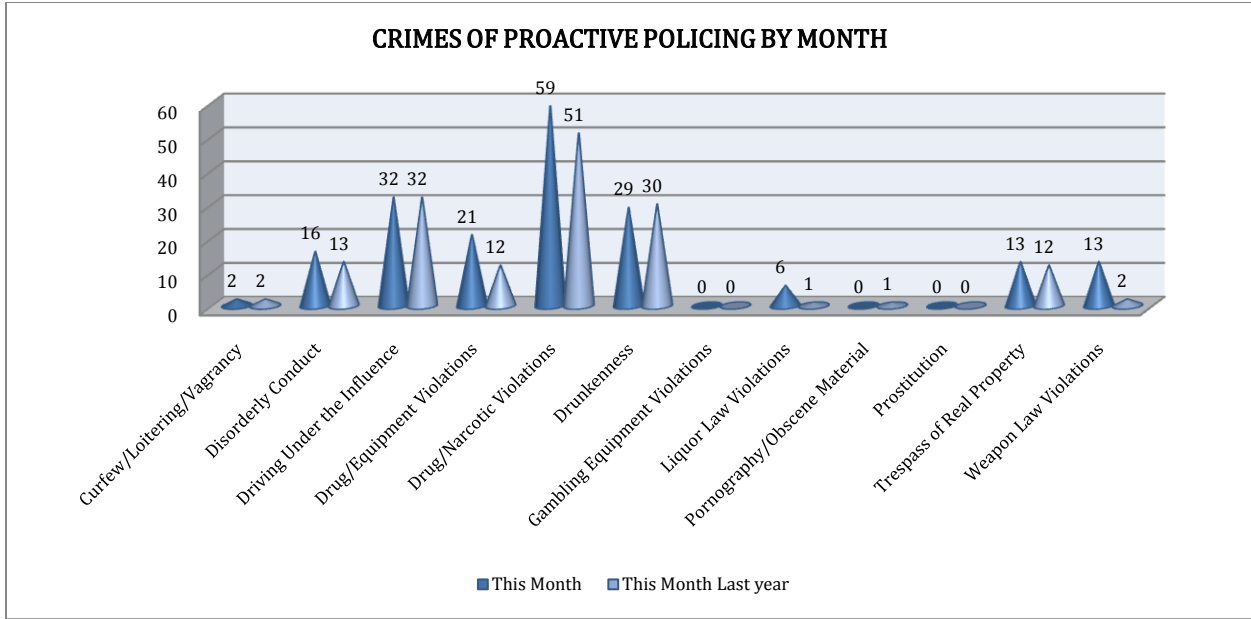
PROPERTY CRIMES

This section displays the criminal activity for 18 crimes, all against property. This month, there were a total of 419 Property Crimes, a 6% decrease from last January. All Other Larceny is significantly down, a 29% decrease from last January. Shoplifting is up to 25 from 14 last year, a 79% increase, and so is Theft from Motor Vehicle, up to 36 from 26 last year, a 38% increase.



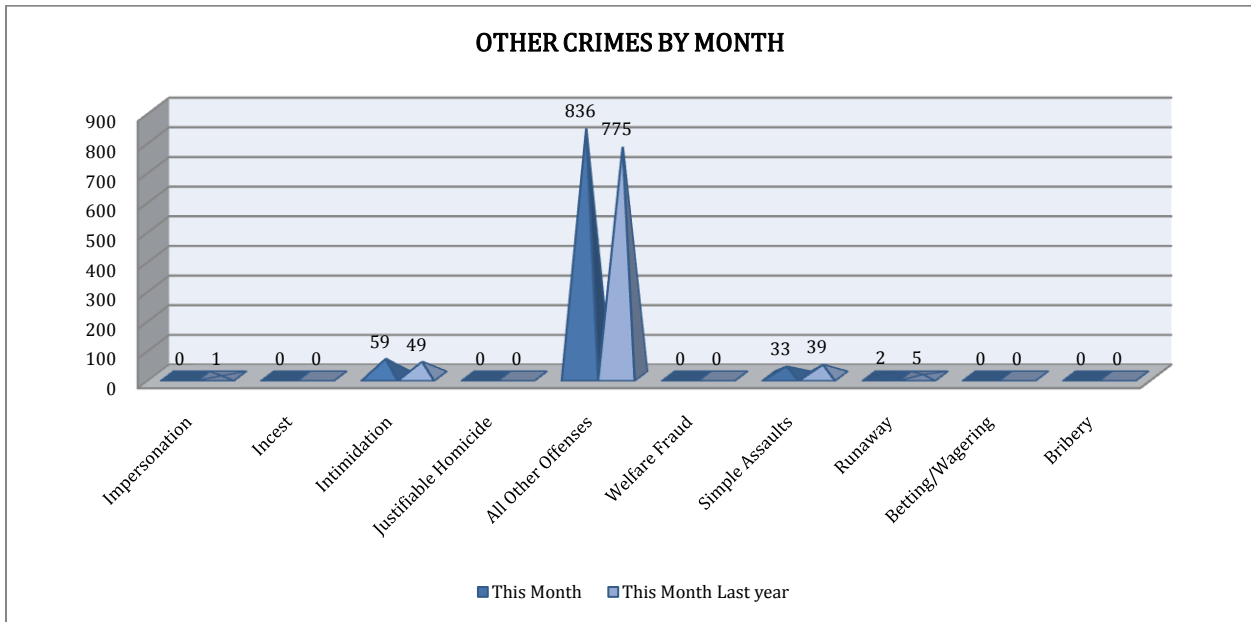
CRIMES OF PROACTIVE POLICING

Crimes of Proactive Policing are those crimes that result from police officers actively policing the streets to combat certain types of street crime. As a chart on the following page indicates, twelve crimes fall under this category. A total of 191 offenses have occurred this month, a 22% increase from last January ($n = 156$). There is an increase in Liquor Law Violations, up to 6 from 1 in last January. Drug/Narcotic Violations have risen by 16% from last January and so did Drug/Equipment Violations, a 75% increase. Significantly higher this January are also Weapon Law Violations, up to 13 from 2 of the last year (see the following page).



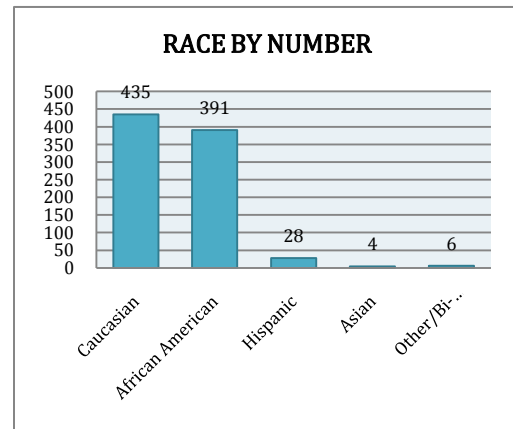
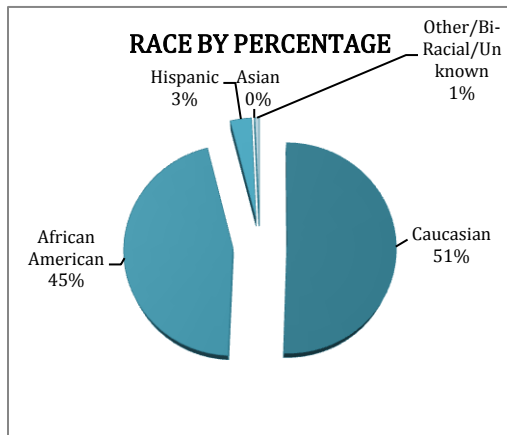
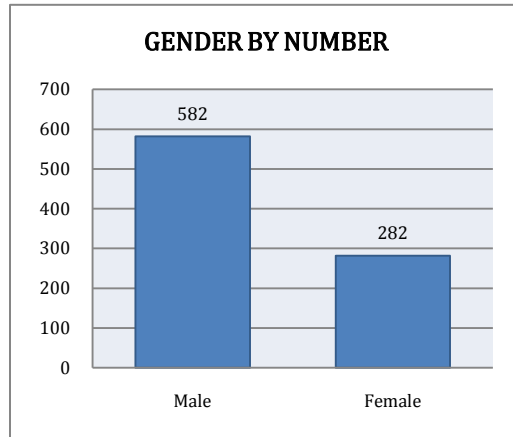
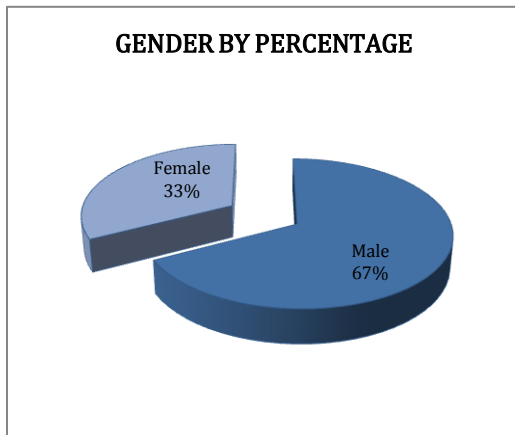
OTHER CRIMES

There are 10 crimes that fall into the Other Crimes category. This month, there have been a total of 930 Other Crimes, up from 869 last January, a 7% increase. Intimidation is up 20%. Simple Assault is down by 15%. All Other Offenses are higher than last January, an 8% increase.



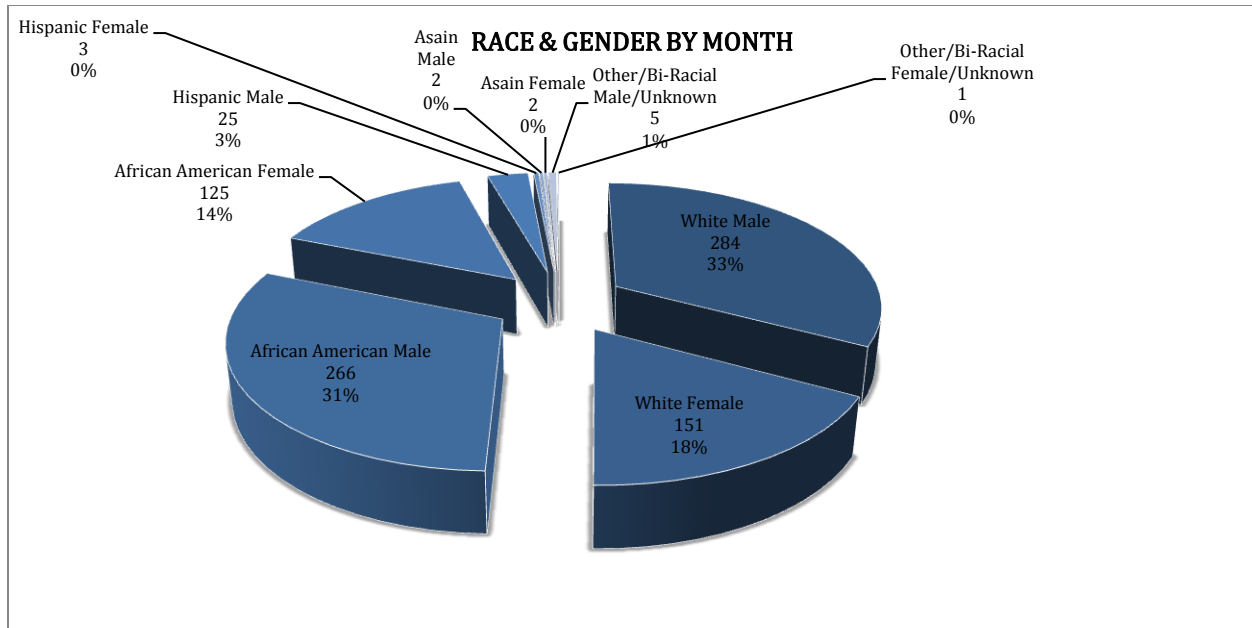
ARREST DEMOGRAPHICS

In January, there were a total of 864 arrests, as opposed to 804 arrests in January of last year*, a 7% increase; that is 0.55 arrests per crime for January of this year, as opposed to 0.54 arrests per crime for January of last year, which indicates that the arrest rate per crime remains the similar to that of last January. This section breaks down this month's arrests by race and gender. The majority of offenders have been male ($n = 582$), as opposed to female ($n = 282$) and Caucasian ($n = 435$) and African American ($n = 391$) as opposed to Hispanic ($n = 28$), Asian ($n = 4$), or other/unknown/bi-racial ($n = 6$).



Caucasian males make up the majority of offenders for the month of January, totaling 33% ($n = 284$). African American males account for 31% ($n = 266$) of the offenders this month. Caucasian females make up 18% ($n = 151$) and African American females make up 14% ($n = 125$). Hispanic males make up 3% ($n = 25$). There was a 1% of Other/Biracial male arrestees ($n = 5$). There were 3 Hispanic females, 2 Asian males and 2 Asian females, and 1 Other/Bi-racial female arestees, insignificant total of 0.93% of all the arestees . This distribution can be reviewed in the pie chart below (see page 9).

* Note: arrest numbers are based on crimes recognized by the FBI Uniform Crime Report (UCR)



*Note: The 0% labels represent rounded real percentage values of < 0.5%.

EMERGENCY 911

Also known as Public Safety Answering Point (PSAP), the Emergency 911 Division is responsible for answering all calls from public for emergency assistance, accessing the needed information to best assist, and then assigning the most efficient and effective emergency response. In addition, this division is responsible for setting priority call dispatching to field units including Police, Fire, and EMS. Emergency 911 also maintains all records for radio logs, calls for service, and other emergency service data collections.

Calls by Type	This Month	This Month Last Year	YTD	Last YTD	Change By Month	Change YTD
Land Line	696	834	696	834	-17%	-17%
Cell Phone	3,579	3,050	3,579	3,050	17%	17%
Admin Lines	15,682	15,724	15,682	15,724	0%	0%
TOTALS	19,957	19,608	19,957	19,608	2%	2%

Calls by Agency	This Month	This Month Last Year	YTD	Last YTD	Change By Month	Change YTD
Jonesboro PD Calls	5,748	5,817	5,748	5,817	-1%	-1%
Craighead Cty Sheriff	1,286	934	1,286	934	38%	38%
Jonesboro Fire Dpt - dispatch	181	162	181	162	12%	12%
Jonesboro Fire Dpt - Med Asst	124	124	124	124	0%	0%
Craighead Cty - Fire	41	56	41	56	-27%	-27%
Craighead Cty - 1st Responder	91	82	91	82	11%	11%
Emerson Ambulance	231	209	231	209	11%	11%
Medic One	295	303	295	303	-3%	-3%
Air Evac	0	1	0	1	-100%	-100%
Coroner	6	2	6	2	200%	200%
ARK State Police	21	13	21	13	62%	62%
Jonesboro Animal Control	41	58	41	58	-29%	-29%
Wreckers Called	166	173	166	173	-4%	-4%
TOTALS	8,231	7,934	8,231	7,934	4%	4%

Calls by Municipality	This Month	This Month Last Year	YTD	Last YTD	Change By Month	Change YTD
Bay PD	42	120	42	120	-65%	-65%
Bono PD	157	147	157	147	7%	7%
Brookland PD	165	206	165	206	-20%	-20%
Caraway PD	66	103	66	103	-36%	-36%
Cash PD	23	80	23	80	-71%	-71%
Egypt PD	7	12	7	12	-42%	-42%
Lake City PD	80	118	80	118	-32%	-32%
Monette PD	131	127	131	127	3%	3%
TOTALS	671	913	671	913	-27%	-27%

UNIFORM PATROL DIVISION

The UPD is responsible for responding to calls into the Emergency – 911 Division by civilians and are normally the first responders. Jonesboro is divided into 6 patrol districts. Officers from UPD are assigned to a district and work the same district every shift. In addition, when a Traffic Officer is not available, a UPD Officer will respond to traffic accidents and assist in directing traffic when necessary.

Incidents	This Month	This Month Last Year	YTD	Last YTD	Change By Month	Change YTD
Incidents	832	814	832	814	2%	2%
Street Accidents	68	65	68	65	5%	5%
Private Property Accidents	38	20	38	20	90%	90%
Traffic Citations	731	886	731	886	-17%	-17%
DWI	24	24	24	24	0%	0%
Mis. Arrests	3,376	2,690	3,376	2,690	26%	26%
Felony Arrests	152	139	152	139	9%	9%
Public Intoxication Arrests	5	6	5	6	-17%	-17%
Calls For Service	7,334	6,777	7,334	6,777	8%	8%
Alarms	209	223	209	223	-6%	-6%
Parking Citations	4	7	4	7	-43%	-43%
Written Warnings	678	591	678	591	15%	15%
TOTALS	12,619	11,428	12,619	11,428	10%	10%
Patrol Miles	69,606	66,605	69,606	66,605	5%	5%
Hours Worked	10,971	10,519	10,971	10,519	4%	4%

PROWL

The PROWL unit is a uniformed street crimes unit specializing in criminal patrol, narcotics enforcement, gang investigation, and prostitution activity. The unit conducts directed patrols, investigates citizen complaints of street-level criminal activity, and directly assists the 2nd Judicial Drug Task Force. PROWL also assists any division within the Jonesboro Police Department at any time when needed.

Incidents	This Month	This Month Last Year	YTD	Last YTD	Change By Month	Change YTD
Street Accidents	0	0	0	0	N/C	N/C
Private Property Accidents	0	1	0	1	-100%	-100%
Traffic Citations	45	23	45	23	96%	96%
DWI	0	0	0	0	N/C	N/C
Mis. Arrests	70	46	70	46	52%	52%
Felony Arrests	36	23	36	23	57%	57%
Drug Arrests	36	21	36	21	71%	71%
Public Intoxication Arrests	0	0	0	0	N/C	N/C
Calls For Service	121	101	121	101	20%	20%
Alarms	0	0	0	0	N/C	N/C
Parking Citations	0	0	0	0	N/C	N/C
Written Warnings	36	8	36	8	350%	350%
Assists	0	0	0	0	N/C	N/C
TOTALS	344	223	344	223	54%	54%
Value of Drugs Seized	\$9,550	\$3,440	\$9,550	\$3,440	178%	178%
Value of Assets Seized	1,930	400	1,930	400	383%	383%
Patrol Miles	4,520	5,250	4,520	5,205	-14%	-13%

CRIMINAL INVESTIGATIVE DIVISION

The CID is responsible for conducting follow-up investigations into criminal acts reported to the Jonesboro Police Department. The primary goal is to collect and present evidence that conclusively leads to a successful arrest. Additionally, CID is charged with clearing additional crimes, recovering stolen property, preventing additional crimes, and gathering intelligence information.

Investigations	This Month	This Month Last Year	YTD	Last YTD	Change By Month	Change YTD
Criminal Investigations Assigned	75	71	75	71	6%	6%
Criminal Investigations Closed	72	122	72	122	-41%	-41%
Cleared by Arrests	34	71	34	71	-52%	-52%
Unfounded	12	10	12	10	20%	20%
Exceptionally Cleared	15	10	15	10	50%	50%
Filed With Prosecutors Office	3	24	3	24	-88%	-88%
TOTALS	211	308	211	308	-31%	-31%

Crimes Against Persons	This Month	This Month Last Year	YTD	Last YTD	Change By Month	Change YTD
Criminal Investigations Assigned	18	11	18	11	64%	64%
Criminal Investigations Closed	19	14	19	14	36%	36%
Cleared by Arrests	12	11	12	11	9%	9%
Unfounded	1	2	1	2	-50%	-50%
Exceptionally Cleared	4	0	4	0	N/C	N/C
Filed With Prosecutors Office	2	1	2	1	100%	100%
TOTALS	56	39	56	39	44%	44%

Property Crimes	This Month	This Month Last Year	YTD	Last YTD	Change By Month	Change YTD
Criminal Investigations Assigned	47	50	47	50	-6%	-6%
Criminal Investigations Closed	40	93	40	93	-57%	-57%
Cleared by Arrests	20	56	20	56	-64%	-64%
Unfounded	8	6	8	6	33%	33%
Exceptionally Cleared	11	9	11	9	22%	22%
Filed With Prosecutors Office	1	22	1	22	-95%	-95%
TOTALS	127	236	127	236	-46%	-46%

Crimes Against Children	This Month	This Month Last Year	YTD	Last YTD	Change By Month	Change YTD
Criminal Investigations Assigned	3	7	3	7	-57%	-57%
Criminal Investigations Closed	5	8	5	8	-38%	-38%
Cleared by Arrests	2	4	2	4	-50%	-50%
Unfounded	3	2	3	2	50%	50%
Exceptionally Cleared	0	1	0	1	-100%	-100%
Filed With Prosecutors Office	0	1	0	1	-100%	-100%
TOTALS	13	23	13	23	-43%	-43%

WARRANTS

The Warrants Division is responsible for serving warrants, criminal summonses, and subpoenas that are issued by the District Court. On city court days, the Warrants Division provides a bailiff for court and a transport officer. In addition, this Division is responsible for transporting wanted persons arrested in other jurisdictions back to Jonesboro. The STEP program operates within this division and is a grant-funded operation in which officers can get paid overtime to enforce the safety belt law.

Arrests	This Month	This Month Last Year	YTD	Last YTD	Change By Month	Change YTD
Misdemeanor	1625	986	1625	986	65%	65%
Felony	1	1	1	1	0%	0%
Total Arrests	1626	987	1626	987	65%	65%

Warrants by Activity	This Month	This Month Last Year	YTD	Last YTD	Change By Month	Change YTD
Subpoenas	211	580	211	580	-64%	-64%
Commitments	0	1	0	1	-100%	-100%
Traffic Citations	2	2	2	2	0%	0%
Complaints	0	0	0	0	N/C	N/C
Assist	0	0	0	0	N/C	N/C
Alarms	0	0	0	0	N/C	N/C

Hours by Activity	This Month	This Month Last Year	YTD	Last YTD	Change By Month	Change YTD
SI Criminal	249	223.5	249	223.5	11%	11%
Court	115.83	122.5	249	223.5	-5%	11%
Prisoner Transport	25.5	12.67	25.5	12.67	101%	101%

Hours Worked	This Month	This Month Last Year	YTD	Last YTD	Change By Month	Change YTD
Regular Hours Worked	695	603	695	603	15%	15%
Overtime Hours Worked	10	6.5	10	6.5	54%	54%
TOTAL Hours Worked	705	609.5	705	609.5	16%	16%

Mileage	This Month	This Month Last Year	YTD	Last YTD	Change By Month	Change YTD
Total Mileage	2265	2694	2265	2694	-16%	-16%

STEP	This Month	This Month Last Year	YTD	Last YTD	Change By Month	Change YTD
DWI Arrest	2	0	2	0	N/C	N/C
DUI Arrest	0	0	0	0	N/C	N/C
Traffic Citations	73	62	73	62	18%	18%
Felony Arrests	0	1	0	1	-100%	-100%
Drug Arrests	0	0	0	0	N/C	N/C

STEP TOTALS	This Month	This Month Last Year	YTD	Last YTD	Change By Month	Change YTD
Hours Worked	60	127	60	127	-53%	-53%
Miles Driven	564	1027	564	1027	-45%	-45%

DRUG TASK FORCE

The DTF is responsible for investigating major drug traffickers in the area, including all types of illegal drugs. They work closely with local, state, and federal agencies to eradicate drugs from the community.

INVESTIGATIONS	This Month	This Month Last Year	YTD	Last YTD	Change By Month	Change YTD
Opened	30	29	30	29	3%	3%
Closed	26	19	26	19	37%	37%
TOTAL	36	37	36	37	-3%	-3%

With Nexus to Jonesboro	This Month	This Month Last Year	YTD	Last YTD	Change By Month	Change YTD
Opened	35	22	35	22	59%	59%
Closed	0	0	0	0	N/C	N/C
TOTAL	35	22	35	22	59%	59%

Outside Jonesboro (No Known Nexus)	This Month	This Month Last Year	YTD	Last YTD	Change By Month	Change YTD
Opened	1	1	1	1	0%	0%
Closed	0	0	0	0	N/C	N/C
TOTAL	1	1	1	1	0%	0%

ASSISTANCE RENDERED	This Month	This Month Last Year	YTD	Last YTD	Change By Month	Change YTD
Assist to Outside Agencies	0	4	0	4	-100%	-100%
Assist to Jonesboro UPD/CID	20	12	20	12	67%	67%

ARRESTS	This Month	This Month Last Year	YTD	Last YTD	Change By Month	Change YTD
Miscellaneous	15	7	15	7	114%	114%
Felony	62	38	62	38	63%	63%
Marijuana	12	4	12	4	200%	200%
Cocaine	1	2	1	2	-50%	-50%
Crack Cocaine	4	3	4	3	33%	33%
Methamphetamine/ICE	13	8	13	8	63%	63%
LSD	0	0	0	0	N/C	N/C
Ecstasy (MDMA or Other Designer Drug)	0	1	0	1	-100%	-100%
Perscription	3	3	3	3	0%	0%
Opiates (Heroin,Opium)	0	0	0	0	N/C	N/C
Labs	3	4	3	4	-25%	-25%
All Other Drug Offenses	0	0	0	0	N/C	N/C

ARRESTS DEMOGRAPHY	This Month	This Month Last Year	YTD	Last YTD	Change By Month	Change YTD
White	20	13	20	13	54%	54%
African American	8	5	8	5	60%	60%
Latino	0	6	0	6	-100%	-100%
Asain	0	1	0	1	-100%	-100%
Other/Bi-Racial	0	0	0	0	N/C	N/C
Male	16	18	16	18	-11%	-11%
Female	11	5	11	5	120%	120%
White Male	10	9	10	9	11%	11%
White Female	10	5	10	5	100%	100%
African American Male	7	5	7	5	40%	40%
African American Female	0	0	0	0	N/C	N/C
Latino Male	0	0	0	0	N/C	N/C
Latino Female	0	0	0	0	N/C	N/C
Asain Male	0	1	0	1	-100%	-100%
Asain Female	0	0	0	0	N/C	N/C
Other/Bi-Racial Male	0	0	0	0	N/C	N/C
Other/Bi-Racial Female	0	0	0	0	N/C	N/C

ASSET FORFEITURE	This Month	This Month Last Year	YTD	Last YTD	Change By Month	Change YTD
Vehicles Seized(No.)	0	0	0	0	N/C	N/C
Value of Assets Seized(Includes Value of vehicles)	\$0	\$0	\$0	\$0	N/C	N/C
Asset Value Awarded to Jonesboro PD (State)		\$0	\$0	\$0	N/C	N/C
Asset Value Awarded to Jonesboro PD (Federal)		\$0	\$0	\$0	N/C	N/C
Asset Value Awarded to Jonesboro PD (Total)		\$0	\$0	\$0	N/C	N/C

PARKING ENFORCEMENT

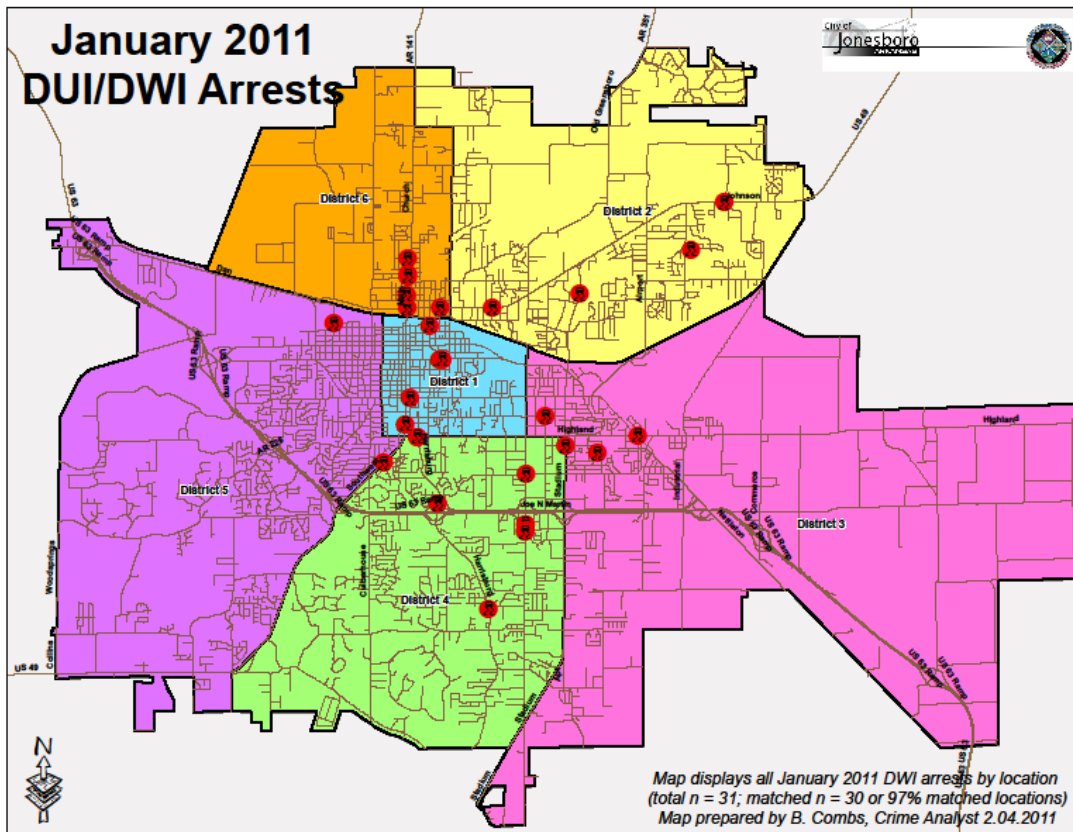
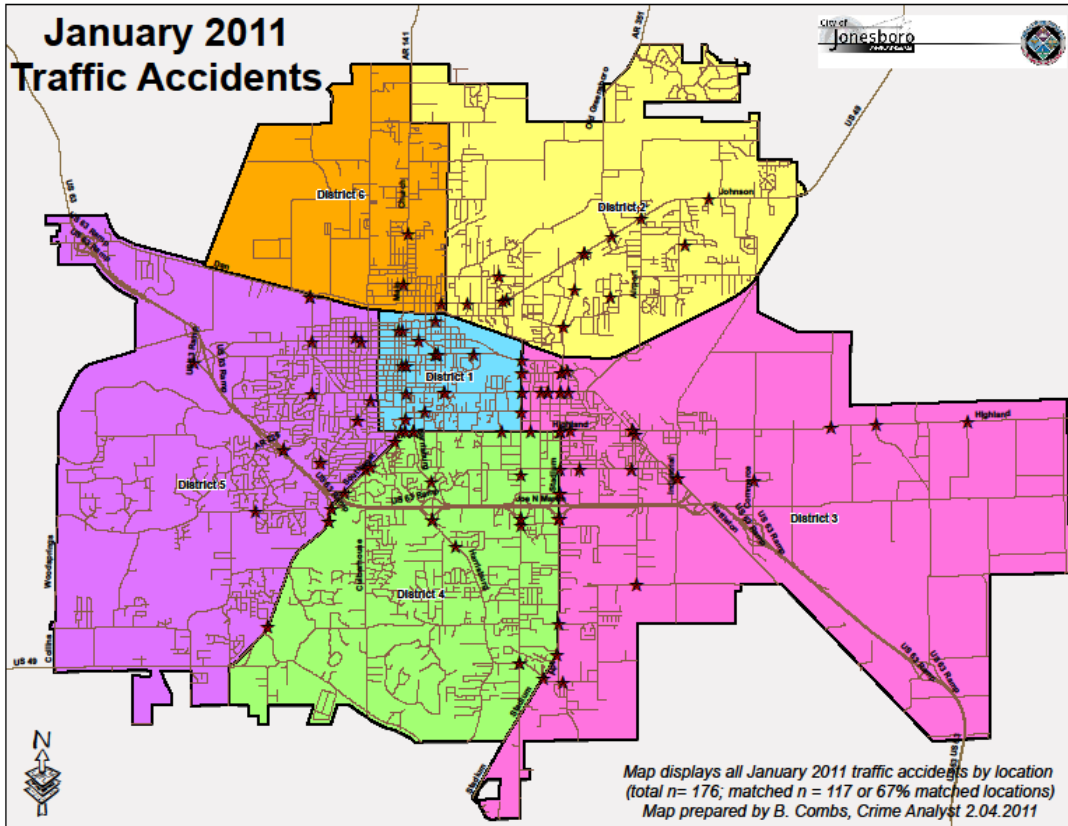
The Parking Enforcement Division is responsible for enforcing parking laws in the downtown area. This service provides safe and convenient parking conditions for the public.

Note: Due to the re-construction of the statistical data report, the Parking Enforcement Division data is not included in this report.

TRAFFIC

Comprised of three motor units and three Chargers, the Traffic Enforcement Unit responds to traffic accidents and provides increased enforcement in particularly challenging areas. This unit also provides extra coverage for specific congestion problems and special events in the community. Last, they work details targeting specific issues, such as DWI enforcement and traffic safety checkpoints.

Incidents	This Month	This Month Last Year	YTD	Last YTD	Change By Month	Change YTD
Street Accidents	110	141	110	141	-22%	-22%
Private Property Accidents	29	24	29	24	21%	21%
Traffic Citations	122	369	122	369	-67%	-67%
DWI	4	7	4	7	-43%	-43%
Mis. Arrests	21	27	21	27	-22%	-22%
Felony Arrests	4	2	4	2	100%	100%
Drug Arrests	0	0	0	0	N/C	N/C
Public Intoxication Arrests	0	0	0	0	N/C	N/C
Calls For Service	259	297	259	297	-13%	-13%
Alarms	4	1	4	1	300%	300%
Parking Citations	0	0	0	0	N/C	N/C
Written Warnings	189	86	189	86	120%	120%
TOTALS	742	954	742	954	-22%	-22%
Value of Asstes Seized	\$0	\$0	\$0	\$0	N/C	N/C
Patrol Miles	5,220	5,514	5,220	5,514	-5%	-5%
Hours Worked	852	818	852	818	4%	4%



ANIMAL CONTROL

The Animal Control Division is responsible for educating the public on safe and humane issues regarding animal treatment, enforcing all animal laws and ordinances, assisting the public in resolving animal issues, and protecting the safety and welfare of the citizens and animals in this community.

Incidents	This Month	This Month Last Year	YTD	Last YTD	Change By Month	Change YTD
Barking Complaints	11	4	11	4	175%	175%
Bite Reports	8	5	8	5	60%	60%
Door Hangers	31	23	31	23	35%	35%
Welfare Checks	64	77	64	77	-17%	-17%
Advised of Rights	476	181	476	181	163%	163%
Incident Reports	3	14	3	14	-79%	-79%
Gone on Arrival	31	34	31	34	-9%	-9%
Complaints	554	584	554	584	-5%	-5%
Desk Complaints	1,397	734	1,397	734	90%	90%
Captured Dogs	144	122	144	122	18%	18%
Captured Cats	7	17	7	17	-59%	-59%
Captured Wildlife	9	8	9	8	13%	13%
Chemical Captures	4	8	4	8	-50%	-50%
Traps	6	6	6	6	0%	0%
Deceased Animals	66	78	66	78	-15%	-15%
Assist J.P.D.	7	14	7	14	-50%	-50%
Assist C.S.O.	1	0	1	0	N/C	N/C
Public Relations	764	415	764	415	84%	84%
CITATIONS ISSUED	100	15	100	15	567%	567%
WARNINGS ISSUED	38	32	38	32	19%	19%
Physical Arrests	0	0	0	0	N/C	N/C
City Warrants Served	6	0	6	0	N/C	N/C
County Warrants Served	0	0	0	0	N/C	N/C
Euthanized	60	49	60	49	22%	22%
Euthanized for Humane Society					N/C	N/C
Deceased Animals Landfill lbs.	3,580	3,280	3,580	3,280	9%	9%
Wildlife Euthanized	9	8	9	8	13%	13%
Sent to Rescue Centers	12	22	12	22	-45%	-45%
Adoptions	42	32	42	32	31%	31%
Miles Driven	6,632	6,889	6,632	6,889	-4%	-4%

FLEET MAINTENANCE

The Fleet Maintenance is responsible for all of the police vehicle maintenance upkeep, cleanliness, and purchasing. In addition, this Division handles most of the purchasing of equipment, supplies, and uniforms for all of the Police Department.

Repair Costs by Model Year	This Month	This Month Last Year	YTD	Last YTD	Change By Month	Change YTD
95-99	\$0.00	\$0.00	\$0.00	\$0.00	N/C	N/C
2000	\$0.00	\$0.00	\$0.00	\$0.00	N/C	N/C
2001	\$11.61	\$0.00	\$11.61	\$0.00	N/C	N/C
2002	\$0.00	\$2,054.11	\$0.00	\$2,054.11	-100%	-100%
2003	\$0.00	\$0.00	\$0.00	\$0.00	N/C	N/C
2004	\$282.82	\$1,492.79	\$282.82	\$1,492.79	-81%	-81%
2005	\$11.56	\$872.15	\$11.56	\$872.15	-99%	-99%
2006	\$1,267.24	\$2,238.53	\$1,267.24	\$2,238.53	-43%	-43%
2007	\$524.35	\$1,308.93	\$524.35	\$1,308.93	-60%	-60%
2008	\$100.98	\$0.00	\$100.98	\$0.00	N/C	N/C
2009	\$49.59	\$0.00	\$49.59	\$0.00	N/C	N/C
2010	\$0.00	n/a	\$0.00	n/a	N/C	N/C
TOTALS	\$2,248.15	\$7,966.51	\$2,248.15	\$7,966.51	-72%	-72%

Routine Preventative Maintenance by Model Year	This Month	This Month Last Year	YTD	Last YTD	Change By Month	Change YTD
95-99	\$0.00	\$0.00	\$0.00	\$0.00	N/C	N/C
2000	\$0.00	\$0.00	\$0.00	\$0.00	N/C	N/C
2001	\$0.00	\$20.00	\$0.00	\$20.00	-100%	-100%
2002	\$0.00	\$0.00	\$0.00	\$0.00	N/C	N/C
2003	\$0.00	\$60.00	\$0.00	\$60.00	-100%	-100%
2004	\$533.12	\$444.35	\$533.12	\$444.35	20%	20%
2005	\$648.74	\$166.50	\$648.74	\$166.50	290%	290%
2006	\$1,645.30	\$1,219.71	\$1,645.30	\$1,219.71	35%	35%
2007	\$1,436.26	\$3,123.04	\$1,436.26	\$3,123.04	-54%	-54%
2008	\$385.07	\$130.00	\$385.07	\$130.00	196%	196%
2009	\$79.46	\$61.02	\$79.46	\$61.02	N/C	N/C
2010	\$0.00	n/a	\$0.00	n/a	N/C	N/C
TOTALS	\$4,727.95	\$5,224.62	\$4,727.95	\$5,224.62	-10%	-10%

RECORDS

The Records Division is responsible for providing administrative and clerical support to the department. Major responsibilities include entering the accident and incident reports and tickets into the records database management system, assisting the general public for report requests, performing criminal backgrounds, serving as a switchboard at times, performing validations, and setting up and managing the payment plans out of court.

RECORDS	This Month	This Month Last Year	YTD	Last YTD	Change By Month	Change YTD
Incident/Arrest Reports Processed	1,191	1,182	1,191	1,182	1%	1%
Accident Reports Processed	179	185	179	185	-3%	-3%
Citations Processed	4,404	4,102	4,404	4,102	7%	7%
Warnings Processed	519	274	519	274	89%	89%
Backgrounds	20	7	20	7	186%	186%
Fingerprints	80	139	80	139	-42%	-42%
Photos	0	0	0	0	N/C	N/C
Accident Requests	94	95	94	95	-1%	-1%
Accident Requests Online	150	144	150	144	4%	4%
TOTALS	6,637	6,128	6,637	6,128	8%	8%

PROFESSIONAL STANDARDS

The Office of Professional Standards, a unit within Administration, is charged with the compilation and updating of an extensive set of policies and procedures and providing a general operations guideline and code of conduct for officers to follow. In the event that a member of the public does experience a negative interaction with an officer, mechanisms are in place for them to lodge a complaint. All complaints are reviewed and investigations completed in a timely manner.

Professional Standards	This Month	This Month Last Year	YTD	Last YTD	Change By Month	Change YTD
Opened (TOTAL)	8	7	8	7	14%	14%
Closed	8	7	8	7	14%	14%
Inquiries	7	6	7	6	17%	17%
Formal Investigations	1	1	1	1	0%	0%
Sustained	5	5	5	5	0%	0%
Not-Sustained	0	1	0	1	-100%	-100%
Exonerated	0	1	0	1	-100%	-100%
Unfounded	3	0	3	0	N/C	N/C