

JONESBORO POLICE DEPARTMENT

Monthly Report

DECEMBER 2014

IN THIS REPORT

CRIME ANALYSIS	1
Total Crime	2
Crimes against Person	4
Property Crimes	5
Crimes of Proactive Policing	6
Other Crimes.....	7
Arrests Demographics	8
EMERGENCY 911	9
UPD	10
PROWL	10
CID	11
WARRANTS	11
DRUG TASK FORCE	12
TRAFFIC	13
Maps	14
ANIMAL CONTROL	15
FLEET MAINTENANCE 16	
RECORDS	17
PROFESSIONAL STANDARDS	17

The purpose of the Jonesboro Police Department Monthly Report is to compile data into one integrated report for review, allowing for a seamless flow of information for better decision-making. After each department collates their monthly numbers and sends it to the Office of Crime Analysis, it is organized into sections of departmental data, analyzed and packaged, and finally disseminated to department heads, the Chief of Police, the City Mayor, and the City Council. Major sections include Crime Analysis, Emergency 911, Uniform Police Division, Prowl, Criminal Investigative Division, Warrants, Drug Task Force, Traffic, Animal Control, Fleet Maintenance, Records, and Professional Standards.

CRIME ANALYSIS

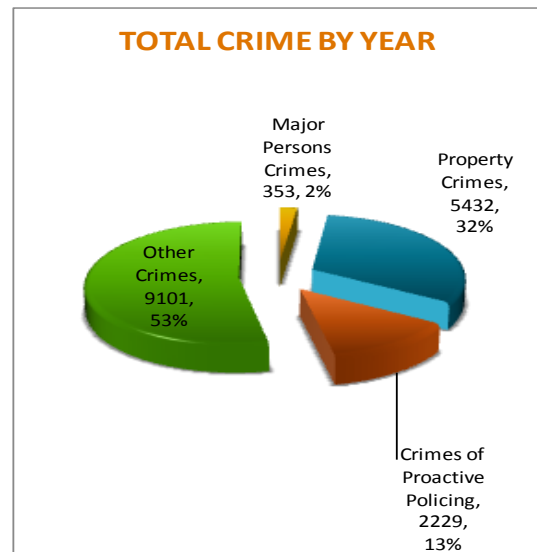
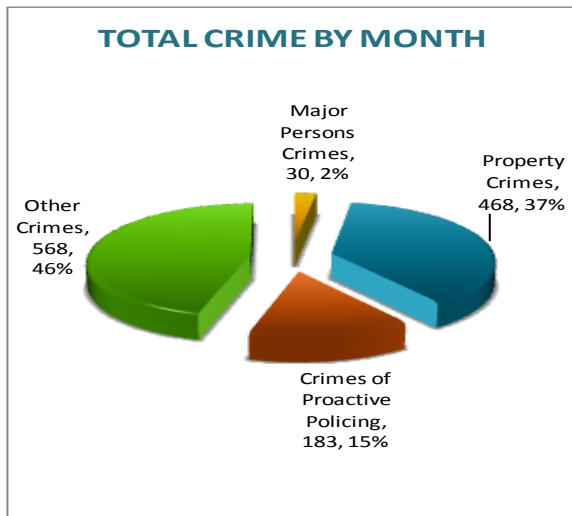
The Crime Analysis division consists of one Crime Analyst and one part-time Crime Analyst Assistant. The Crime Analyst position is responsible for the analysis and dissemination of crime activity data and the collection and maintenance of crime intelligence information for the city of Jonesboro. Additionally, the Office is charged with providing the department with current and accurate crime maps presenting crime activity data to audiences of interest and with responding to requests for crime data from civilians and departmental staff. Data exported from this division is used by field agents for more effective, efficient policing, by administration for improved staffing decisions, and by the Mayor's office for community decision making and enhanced public relations. The following section is broken down into Total Crime, Crimes against Persons, Property Crimes, Crimes of Proactive Policing, Other Crimes, Arrest Demographics, and Total Crime Monthly Comparison.

January 13, 2015

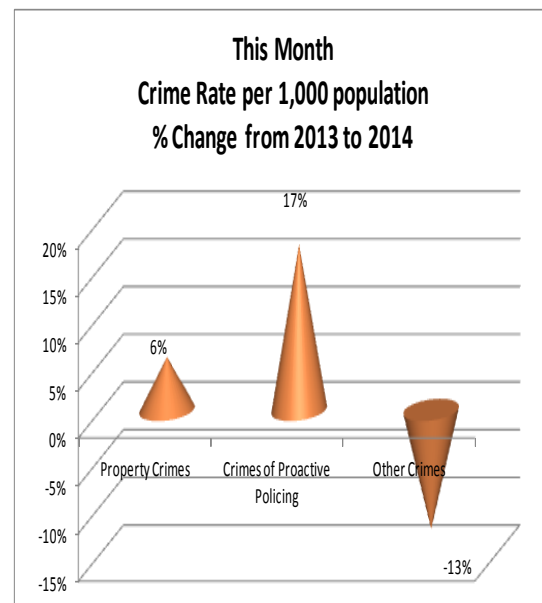
TOTAL CRIME

The crime activity for the month of December 2014 was at a total of 1,249 NIBRIS reportable offenses, a 0.5% increase, comparing to the total of offenses reported in December of the last year. With Jonesboro population estimated to be equal to 71,527, the crime rate in December of this year was at 17.5 crimes per 1,000 population, comparing to 18 crimes per 1,000 population last year¹, a -1% decrease. As indicated on the pie chart below, Other Crimes absorb the majority, 46%, of this month's crime activity (n = 568). Property Crimes fall into a second place and comprise of 37% of all the crimes (n = 468). Following in third and fourth places are, respectively, Crimes of Proactive Policing, comprising of 15% (n = 183) of all the crimes, and Crimes against Persons, comprising of 2% (n = 30) of all the crimes this month.

1,000 population, as compared to 255 offenses per 1,000 population last year, a -4% decrease. To date, a 53% of all the offenses is attributed to Other Crimes category (n = 9,101). Property Crimes amount to 32% of all the offenses (n = 5,432), Crimes of Proactive Policing comprise of 13% of all the crimes to date, where n = 2,229; Crimes against Persons comprise of 2% of a total year to date number of crimes (n = 353).



Year to date data includes number of crimes from January through December 2014. A total of 17,115 NIBRIS reportable offenses were reported so far in 2014, a -4% decrease, comparing to the same period of last year. The year to date crime rate is 244 offenses per

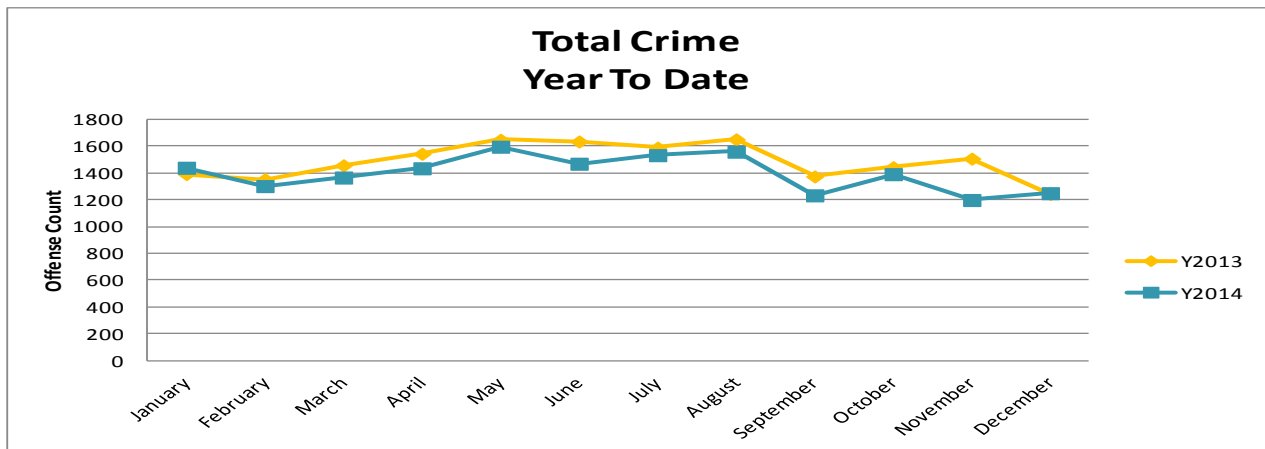
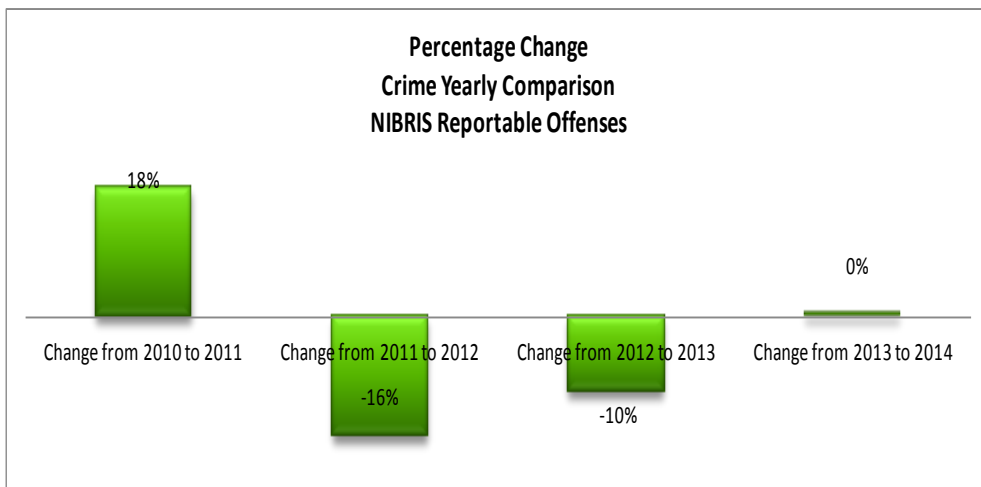
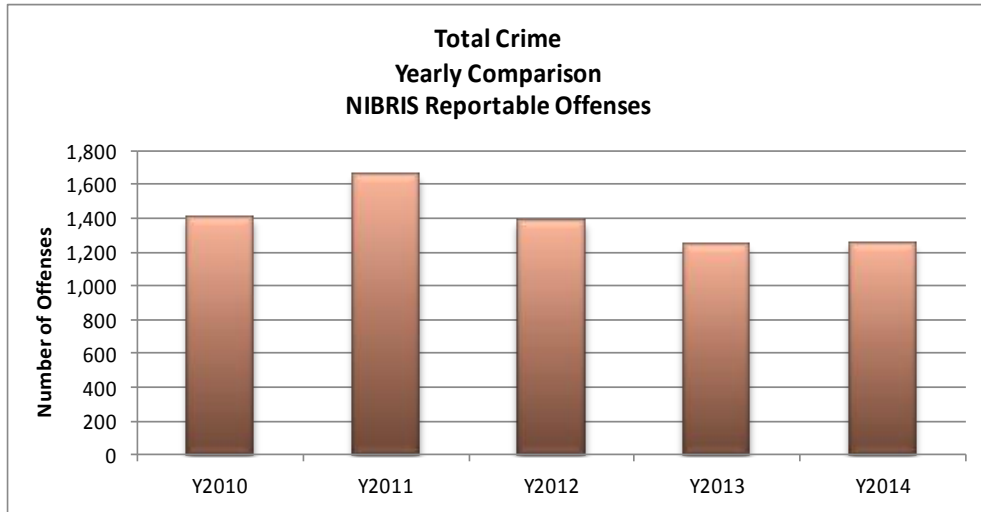


¹ Note: Population numbers are based on 2012 & 2013 population estimate, where 2012 population estimate is 70,187.

MONTHLY REPORT DECEMBER 2014

January 13, 2015

The charts below depict frequencies of crime by year, percentage change from year to year, and year to date yearly comparison.

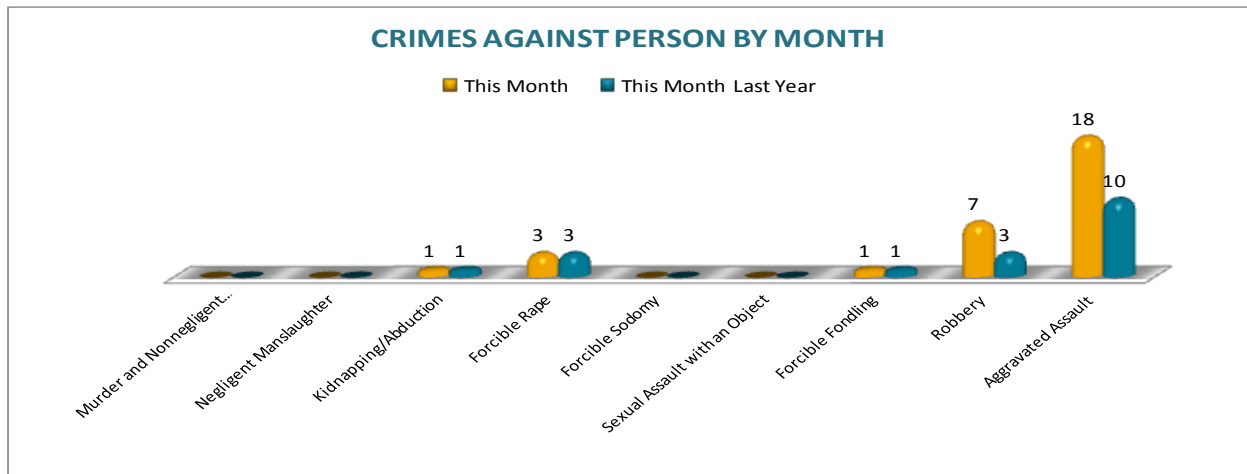


January 13, 2015

CRIMES AGAINST PERSONS

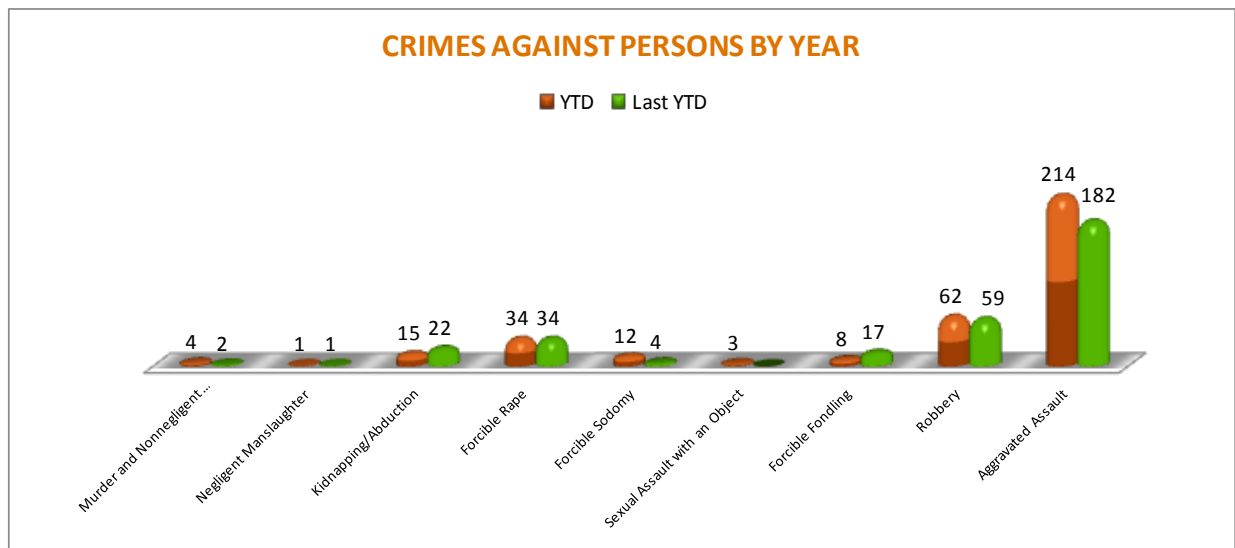
There are 9 crimes that make up this section. There were a total of 30 offenses in this area in December this year, 12 offenses more, comparing to December of the last year. There were 4 more Robberies and 8 more Aggravated

Assaults reported this year in December, comparing to the last year. As demonstrated on the column chart below, there are no significant changes in frequencies for the remaining offenses under this category.



A graph below shows the year to date data for Crimes against Persons, which amounts to a total of 353 offenses for this category of crimes, a 10% increase, comparing to the year to date data of last year. There were 9 less instances of Forcible Fondling, comparing to the same time frame last year. There were 2 more Murders

and Nonnegligent Manslaughters committed this year and 7 less Kidnapping/Abductions offenses. Aggravated Assaults have increased by 18% and we had 8 more instances of Forcible Sodomy reported so far this year. There are no other significant changes in frequencies for the crimes in this category.

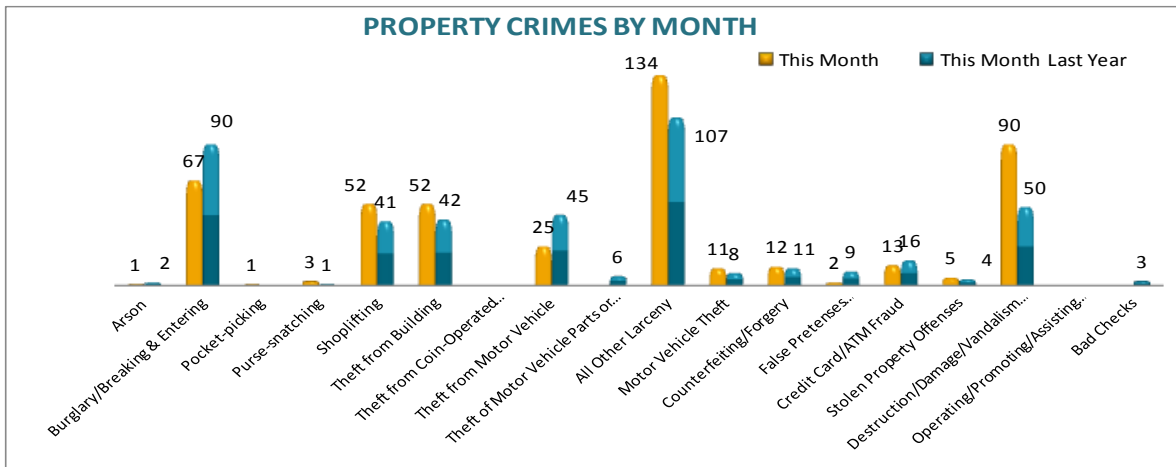


January 13, 2015

PROPERTY CRIMES

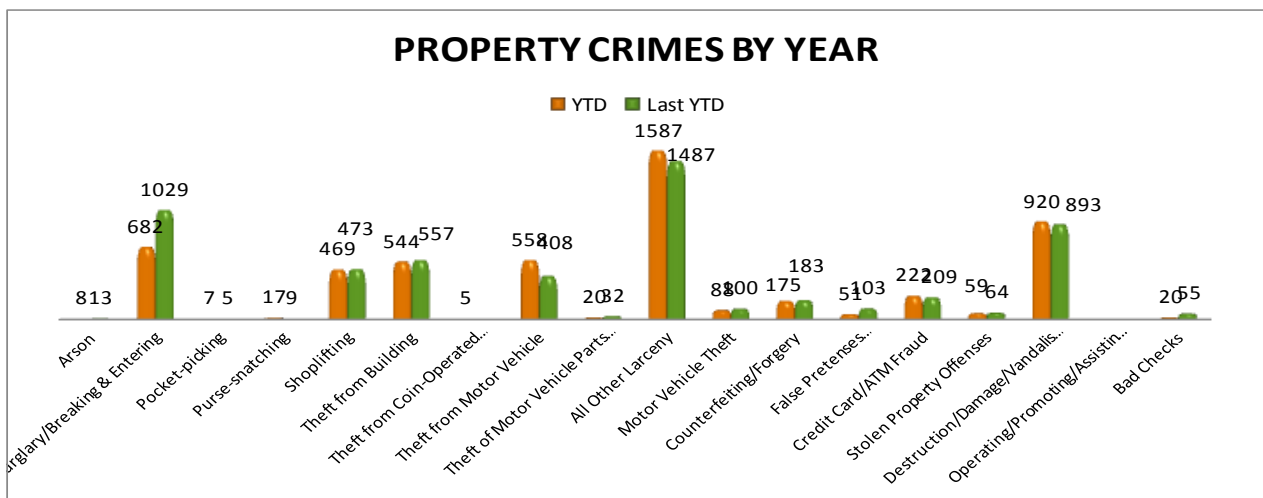
This section displays the criminal activity for 18 crimes, all against property. This month, there were a total of 468 Property Crimes, an 8% increase, comparing to December of the last year. The data indicates change in Burglary/Breaking & Entering, down -26%, and in Shoplifting, up 27%. Theft from building has

increased, up 24%. Theft from Motor Vehicle has decreased, down -44%. All Other Larceny offenses have increased, up 25%. Destruction/ Damage/ Vandalism of Property offenses have also increased by 80%. No other significant changes are noted for the remainder of the offenses in this category of crimes.



To date, a total of 5,432 property offenses have been reported, a -3% decrease, comparing to the last year's data at this same time. The following changes are noted this year to date period: Burglary /Breaking & Entering are down, -34%; Motor Vehicle Theft is down, -12%; Counterfeiting / Forgery is down, -4%; False

Pretenses / Swindle/ Confidence Game are down, -50%; Stolen Property Offenses are down, -8%, and Bad Checks offenses are down, -64%. There were 8 more Purse Snatching offenses reported this year, Theft from Motor Vehicle is up 37%, Credit Card/ATM Fraud is up 6%, and All Other Larceny is up 7%.

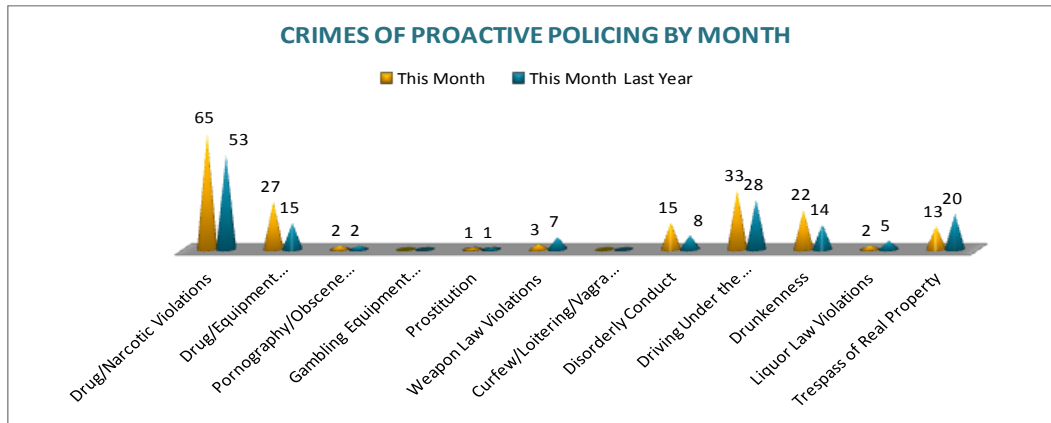


January 13, 2015

CRIMES OF PROACTIVE POLICING

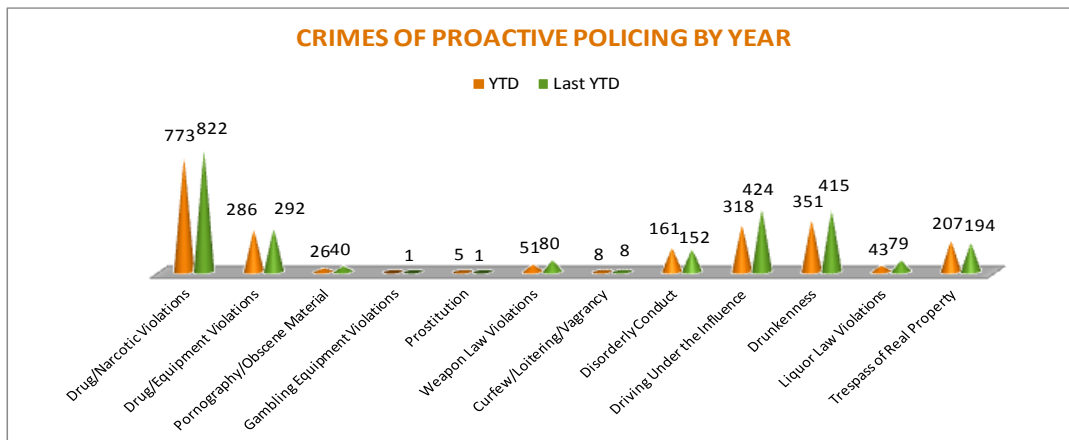
Crimes of Proactive Policing are those crimes that result from police officers actively policing the streets to combat certain types of street crime. As chart below indicates, twelve crimes fall under this category. A total of 183 offenses have been reported this month, up 20%, comparing to December of the last year.

Drug/Narcotic Violations have increased by 23%. Driving Under the Influence violations have increased by 18%; Drunkenness is up 57%. There were 7 more offenses of Disorderly Conduct reported this year. There are no other major changes noted for the offenses in this category.



To date for the year 2014, there have been 2,229 offenses of proactive policing reported, a -11% decrease when comparing to the last year's to date data. Drug/Narcotic Violations are down -6%, Drug / Equipment Violations are down -8%, Drug/Equipment offenses are down -2%, Weapon Law Violations are down -36%, and Driving under Influence has decreased by -25%. Drunkenness is down -15% and Liquor Law

Violations are down -46%, and Pornography / Obscene Material offenses are down -35%. Trespass of Real Property has increased by 7%, Disorderly Conduct has increased by 6%, and there were 4 more instances of Prostitution reported this year. There are no other significant changes noted for other offenses in this category.

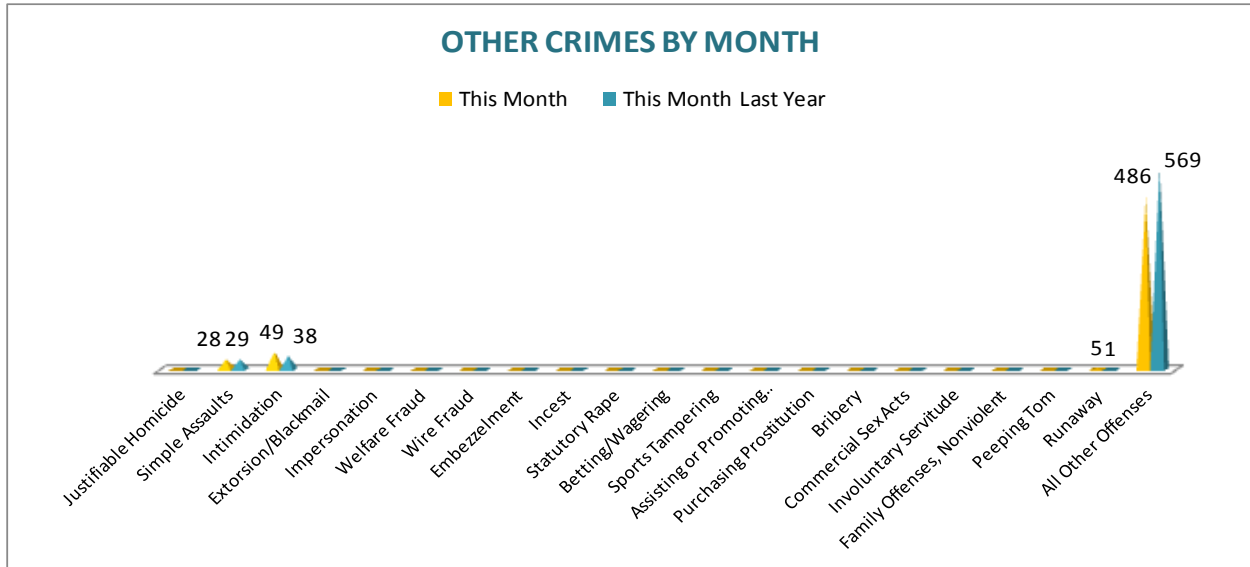


January 13, 2015

OTHER CRIMES

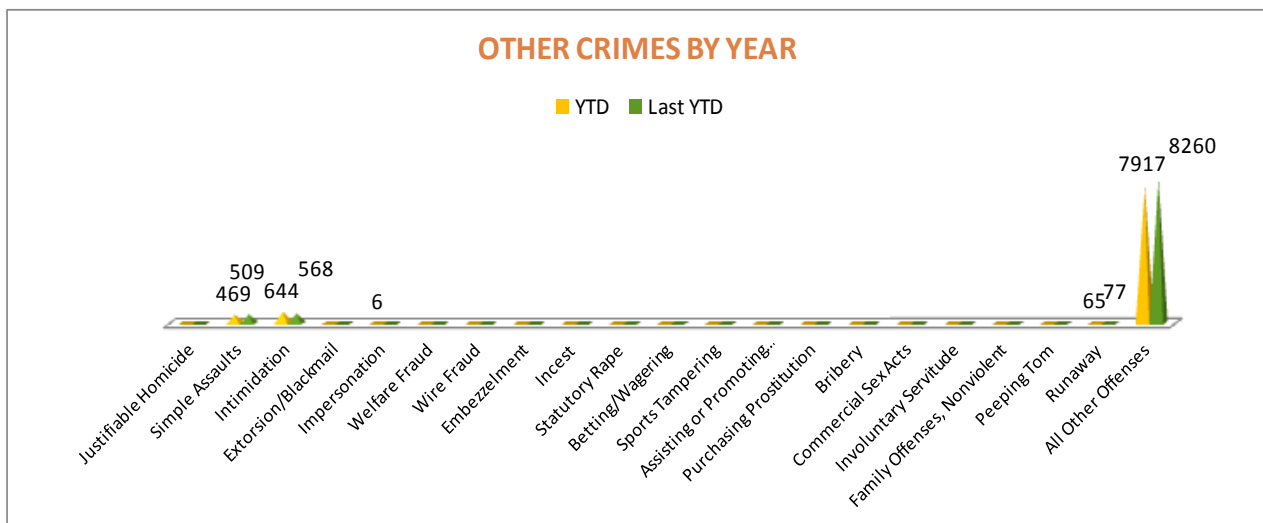
There are 21 crimes that fall into the Other Crimes category. This month, there have been a total of 568 Other Crimes reported, an -11% decrease, comparing to December of the last

year. All Other Offenses have decreased by -15%. Intimidation offenses have increased by 29%. No other major changes are noted in this category of crimes this month.



To date this year, there have been 9,101 Other Crimes offenses reported, down -3% when comparing to the last year's to date data. Intimidation offenses have increased by 13% and Simple Assaults offenses have decreased by

-8%. Runaway offenses are down, -16%. All Other Offenses have decreased by -4%. No other major changes have been observed for other offenses within this category, comparing to the last year's data.

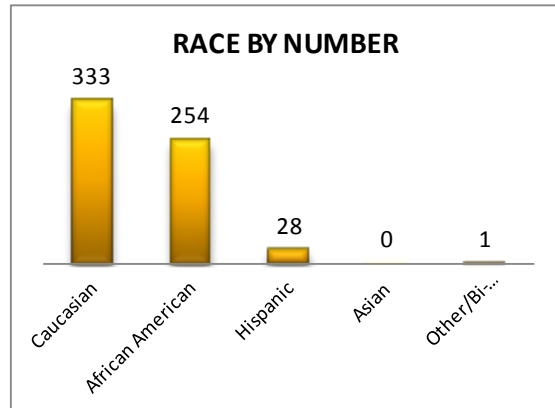
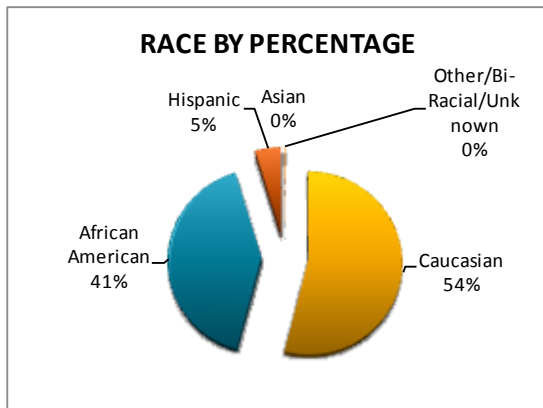
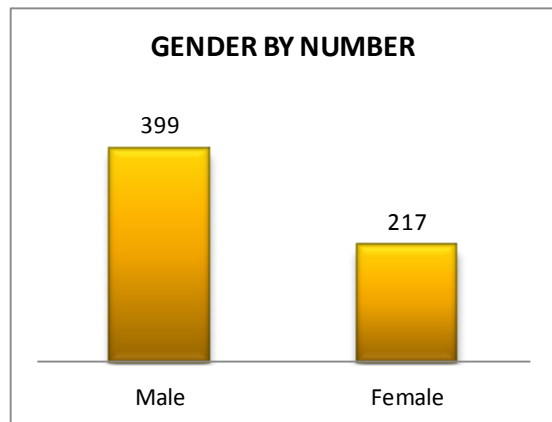
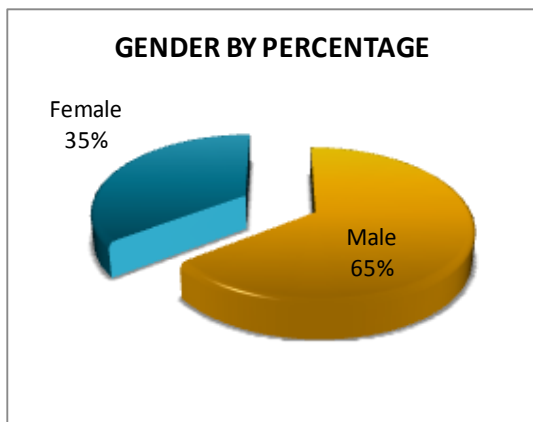


January 13, 2015

ARREST DEMOGRAPHICS

In December 2014, there were a total of 616 arrests carried out by the Jonesboro Police Department, down -14%, comparing with the last year's data for the month of December. The rate of arrests per offense has decreased by -15% this month, comparing to the rate from the previous year; the rate of arrests per offense since January through December have decreased by -3%. This section breaks down this

month's arrests by race and gender. The majority of arrestees, 65%, have been male ($n = 399$), as opposed to 35% of female arrestees ($n = 217$). As for the racial/ethnic composition, the majority of arrestees have been Caucasian (54%) and African American (41%), comparing to Hispanic (5%), Asian (0%), or other/unknown/bi-racial (0%).

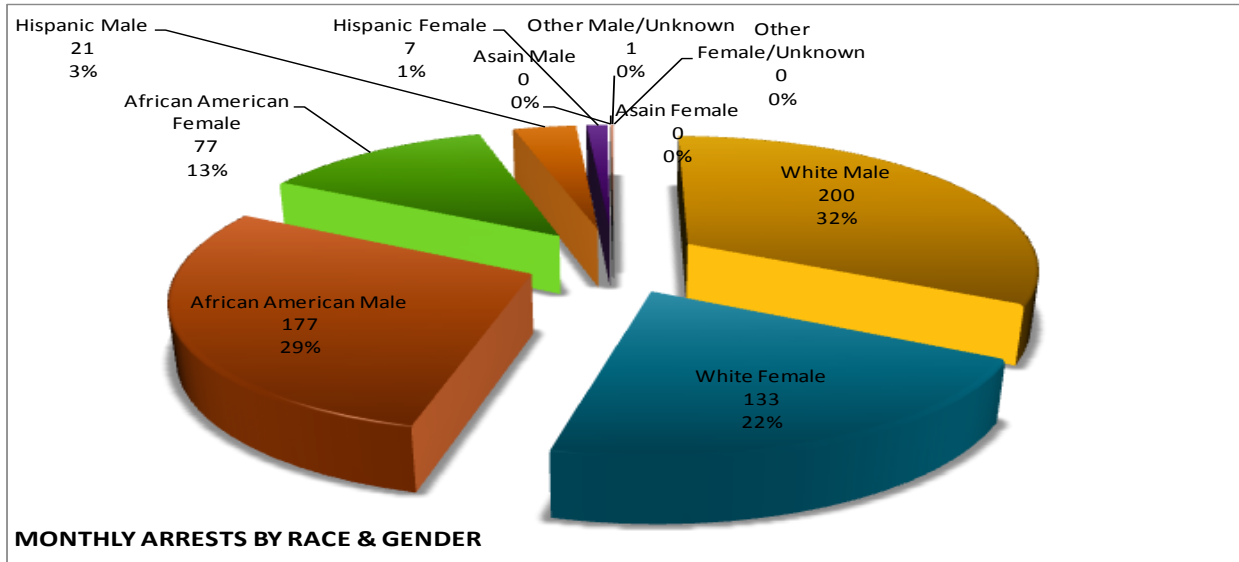


Caucasian males make up the majority, a 32% of arrestees this month, followed by African American males, 29%. Caucasian females make up 22%, while African American females make up 13% of all the arrestees this month. Hispanic

males make up 3%, while Hispanic females, male of Other/Unknown race, and female of Other/Unknown race make up 1% or less of all the arrestees this month.

MONTHLY REPORT DECEMBER 2014

January 13, 2015



EMERGENCY 911

Also known as Public Safety Answering Point (PSAP), the Emergency 911 Division is responsible for answering all calls from public for emergency assistance, accessing the needed information to best assist, and then assigning the most efficient and effective emergency response. In addition, this division is responsible

for setting priority call dispatching to field units including Police, Fire, and EMS. Emergency 911 also maintains all records for radio logs, calls for service, and other emergency service data collections.

Calls by Type	This Month	This Month Last Year	YTD	Last YTD	Change By Month	Change YTD
Land Line E911	785	890	10,025	9,573	-12%	5%
Cell Phone E911	5,295	4,428	60,561	52,468	20%	15%
Admin Lines-non emer	14,153	14,407	169,882	173,869	-2%	-2%
TOTALS	20,233	19,725	240,468	235,910	3%	2%

Calls by Agency	This Month	This Month Last Year	YTD	Last YTD	Change By Month	Change YTD
Jonesboro PD Calls	5,818	6,282	86,736	81,920	-7%	6%
Craighead Cty Sheriff	967	1,212	18,729	15,793	-20%	19%
Jonesboro Fire Dpt - dispatch	221	206	2,644	2,371	7%	12%
Jonesboro Fire Dpt - Med Asst	179	172	1,801	1,714	4%	5%
Craighead Cty - Fire	29	34	639	494	-15%	29%
Craighead Cty - 1st Responder	127	113	1,412	1,166	12%	21%
Emerson Ambulance	329	309	3,710	3,463	6%	7%
Medic One	363	333	4,142	3,813	9%	9%
Air Evac	0	0	5	5	N/C	0%
Coroner	1	3	43	39	-67%	10%
ARK State Police	6	13	95	123	-54%	-23%
Jonesboro Animal Control	2	4	50	48	-50%	4%
Wreckers Called	254	200	2,590	2,215	27%	17%
TOTALS	8,296	8,881	122,596	113,164	-7%	8%

MONTHLY REPORT DECEMBER 2014

January 13, 2015

Calls by Municipality	This Month	This Month Last Year	YTD	Last YTD	Change By Month	Change YTD
Bay PD	93	67	1446	1417	39%	2%
Bono PD	202	258	3486	3255	-22%	7%
Brookland PD	249	122	2687	1799	104%	49%
Caraway PD	36	67	520	860	-46%	-40%
Cash PD	153	119	2060	1043	29%	98%
Egypt PD	3	8	89	160	-63%	-44%
Lake City PD	95	91	1266	1512	4%	-16%
Monette PD	102	140	1391	1628	-27%	-15%
TOTALS	933	872	12,945	11,674	7%	11%

UNIFORM PATROL DIVISION

The UPD is responsible for responding to calls into the Emergency – 911 Division by civilians and are normally the first responders. Jonesboro is divided into 6 patrol districts. Officers from UPD are assigned to a district and

work the same district every shift. In addition, when a Traffic Officer is not available, a UPD Officer will respond to traffic accidents and assist in directing traffic when necessary.

Incidents	This Month	This Month Last Year	YTD	Last YTD	Change By Month	Change YTD
Calls for Service	5,533	4,497	87,423	89,224	23%	-2%
Complaints	3,707	4,603	55,693	55,727	-19%	0%
Assists	1,592	670	13,750	13,527	138%	2%
Incident Reports	861	693	10,551	12,260	24%	-14%
Street Accidents	146	73	1,089	973	100%	12%
Private Property Accidents	58	32	564	483	81%	17%
Traffic Stops	1,826	1,570	30,834	27,133	16%	14%
Traffic Citations	284	340	5,920	7,785	-16%	-24%
Written Warnings	864	638	15,098	11,226	35%	34%
DWI	29	23	271	452	26%	-40%
Mis. Arrests	337	379	4,475	5,850	-11%	-24%
Felony Arrests	89	78	1,107	1,232	14%	-10%
Warrants Served	704	902	10,243	15,366	-22%	-33%
Alarms	316	390	4,800	4,541	-19%	6%
Hours Worked	8,050	8,166	95,197	109,676	-1%	-13%

PROWL

The Prowl unit is a uniformed street crimes unit specializing in criminal patrol, narcotics enforcement, gang investigation, and prostitution activity. The unit conducts directed

patrols, investigates citizen complaints of street-level criminal activity, and directly assists the 2nd Judicial Drug Task Force. PROWL also assists any division within the Jonesboro Police Department at any time when needed.

*Note: PROWL Unit was not operating in December 2014, thus there is no data available.

MONTHLY REPORT DECEMBER 2014

January 13, 2015

CRIMINAL INVESTIGATIVE DIVISION

The CID is responsible for conducting follow-up investigations into criminal acts reported to the Jonesboro Police Department. The primary goal is to collect and present evidence that

conclusively leads to a successful arrest. Additionally, CID is charged with clearing additional crimes, recovering stolen property, preventing additional crimes, and gathering intelligence information.

Investigations	This Month	This Month Last Year	YTD	Last YTD	Change By Month	Change YTD
Criminal Investigations Assigned	137	113	1702	1472	21%	16%
Criminal Investigations Closed	93	80	1176	1017	16%	16%
Cleared by Arrests	55	50	748	618	10%	21%
Unfounded	12	10	126	125	20%	1%
Exceptionally Cleared	24	11	211	155	118%	36%
Filed With Prosecutors Office	1	7	55	81	-86%	-32%
Property Crimes	This Month	This Month Last Year	YTD	Last YTD	Change By Month	Change YTD
Criminal Investigations Assigned	90	75	1093	960	20%	14%
Criminal Investigations Closed	48	50	696	578	-4%	20%
Cleared by Arrests	29	31	483	377	-6%	28%
Unfounded	6	7	64	64	-14%	0%
Exceptionally Cleared	13	7	123	100	86%	23%
Filed With Prosecutors Office	0	5	26	37	-100%	-30%
Investigations	This Month	This Month Last Year	YTD	Last YTD	Change By Month	Change YTD
Criminal Investigations Assigned	137	113	1702	1472	21%	16%
Criminal Investigations Closed	93	80	1176	1017	16%	16%
Cleared by Arrests	55	50	748	618	10%	21%
Unfounded	12	10	126	125	20%	1%
Exceptionally Cleared	24	11	211	155	118%	36%
Filed With Prosecutors Office	1	7	55	81	-86%	-32%
Crimes Against Children	This Month	This Month Last Year	YTD	Last YTD	Change By Month	Change YTD
Criminal Investigations Assigned	3	7	100	114	-57%	-12%
Criminal Investigations Closed	5	8	69	85	-38%	-19%
Cleared by Arrests	1	4	40	36	-75%	11%
Unfounded	3	2	18	17	50%	6%
Exceptionally Cleared	1	1	3	10	0%	-70%
Filed With Prosecutors Office	0	1	8	22	-100%	-64%
	This Month	This Month Last Year	YTD	Last YTD	Change By Month	Change YTD
Miscellaneous Investigations Assigned	0	0	0	0	N/C	N/C
Miscellaneous Investigations Cleared	2	2	38	18	0%	111%
FINGERPRINTS	This Month	This Month Last Year	YTD	Last YTD	Change By Month	Change YTD
Rolled for the Public	This Month	This Month Last Year	YTD	Last YTD	#VALUE!	#VALUE!

WARRANTS

The Warrants Division is responsible for serving warrants, criminal summonses, and subpoenas that are issued by the District Court. On city court days, the Warrants Division provides a bailiff for court and a transport officer. In addition, this Division is responsible for

transporting wanted persons arrested in other jurisdictions back to Jonesboro. The STEP program operates within this division and is a grant-funded operation in which officers can get paid overtime to enforce the safety belt law.

MONTHLY REPORT DECEMBER 2014

January 13, 2015

Arrests	This Month	This Month Last Year	YTD	Last YTD	Change By Month	Change YTD
Misdemeanor	1	0	12	4845	N/C	-100%
Felony	1	0	3	6	N/C	-50%
Total Arrests	2	0	15	4851	N/C	-100%

Warrants by Activity	This Month	This Month Last Year	YTD	Last YTD	Change By Month	Change YTD
Subpoenas	422	387	4420	6183	9%	-29%
Commitments	4	7	75	66	-43%	14%
Traffic Citations	572	4	9468	17	14200%	55594%
Complaints	0	0	8	43	N/C	-81%
Assist	3	0	40	3	N/C	1233%
Alarms	0	0	8	0	N/C	N/C

Hours by Activity	This Month	This Month Last Year	YTD	Last YTD	Change By Month	Change YTD
SI Criminal	69	128.5	1478.5	2113.2	46%	-30%
Court	119	112.5	1223	1261.7	6%	-3%
Prisoner Transport	28.5	54.5	446.5	482.17	-48%	-7%

Hours Worked	This Month	This Month Last Year	YTD	Last YTD	Change By Month	Change YTD
Regular Hours Worked	467	582	5865	6665.5	-20%	-12%
Overtime Hours Worked	8	7	173	84.3	14%	105%
TOTAL Hours Worked	475	589	6038	6749.8	-19%	-11%

Mileage	This Month	This Month Last Year	YTD	Last YTD	Change By Month	Change YTD
Total Mileage	2110	3356	33047	37895	-37%	-13%

STEP	This Month	This Month Last Year	YTD	Last YTD	Change By Month	Change YTD
DWI Arrest	1	0	1	0	N/C	N/C
DUI Arrest	0	0	0	0	N/C	N/C
Traffic Citations	33	0	33	125	N/C	-74%
Felony Arrests	0	0	0	1	N/C	-100%
Drug Arrests	0	0	0	0	N/C	N/C
STEP TOTALS	91	0	91	126	N/C	-28%
STEP Hours Worked	108.5	0	108.5	135	N/C	-20%
STEP Miles Driven	486	0	486	776	N/C	-37%

DRUG TASK FORCE

The DTF is responsible for investigating major drug traffickers in the area, including all types of illegal drugs.

The DTF works closely with local, state, and federal agencies to eradicate drugs from the community.

INVESTIGATIONS	This Month	This Month Last Year	YTD	Last YTD	Change By Month	Change YTD
Opened	25	22	331	249	14%	33%
Closed	25	18	240	181	39%	33%
TOTAL	50	40	571	430	25%	33%
With Nexus to Jonesboro	This Month	This Month Last Year	YTD	Last YTD	Change By Month	Change YTD
Opened	17	22	296	210	-23%	41%
Closed	0	0	0	0	N/C	N/C
TOTAL	17	22	296	210	-23%	41%

MONTHLY REPORT DECEMBER 2014

January 13, 2015

Outside Jonesboro (No Known Nexus)	This Month	This Month Last Year	YTD	Last YTD	Change By Month	Change YTD
Opened	1	0	4	6	N/C	-33%
Closed	0	0	0	0	N/C	N/C
TOTAL	1	0	4	6	N/C	-33%
ASSISTANCE RENDERED	This Month	This Month Last Year	YTD	Last YTD	Change By Month	Change YTD
Assist to Outside Agencies	1	2	10	3	-50%	233%
Assist to Jonesboro UPD/CID	11	5	110	87	120%	26%
ARRESTS	This Month	This Month Last Year	YTD	Last YTD	Change By Month	Change YTD
Miscellaneous	12	13	165	88	-8%	88%
Felony	47	29	388	317	62%	22%
Marijuana	4	5	41	65	-20%	-37%
Cocaine	1	2	5	13	-50%	-62%
Crack Cocaine	0	3	14	12	-100%	17%
Methamphetamine/ICE	19	11	164	118	73%	39%
LSD	0	0	1	0	N/C	N/C
Extasy (MDMA or Other Designer Drug)	0	0	1	3	N/C	-67%
Prescription	7	3	39	40	133%	-3%
Opiates (Heroin, Opium)	0	0	0	0	N/C	N/C
Labs	1	1	3	5	0%	40%
All Other Drug Offenses	5	7	103	92	-29%	12%
ASSET FORFEITURE	This Month	This Month Last Year	YTD	Last YTD	Change By Month	Change YTD
Vehicles Seized (No.)	0	0	1	2	N/C	-50%
Value of Assets Seized(Includes Value of vehicles)	\$0.00	\$0	\$6,814	#####	N/C	-54%
Asset Value Awarded to Jonesboro PD (State)	\$ -	\$ -	\$ -	\$ -	N/C	N/C
Asset Value Awarded to Jonesboro PD (Federal)	\$ -	\$ -	\$ -	\$ -	N/C	N/C
Asset Value Awarded to Jonesboro PD (Total)	\$ -	\$ -	\$ -	\$ -	N/C	N/C
ARRESTS DEMOGRAPHICS	This Month	This Month Last Year	YTD	Last YTD	Change By Month	Change YTD
White	21	11	196	156	91%	26%
African American	8	10	80	74	-20%	8%
Latino	0	0	13	5	N/C	160%
Asian	0	0	0	0	N/C	N/C
Other/Bi-Racial	0	0	0	0	N/C	N/C
Male	21	13	192	158	62%	22%
Female	8	6	88	68	33%	29%
White Male	13	6	117	94	117%	24%
White Female	8	5	79	56	60%	41%
African American Male	8	9	62	63	-11%	-2%
African American Female	0	1	8	11	-100%	-27%
Latino Male	0	0	11	4	N/C	175%
Latino Female	0	0	2	0	N/C	N/C
Asian Male	0	0	0	0	N/C	N/C
Asian Female	0	0	0	0	N/C	N/C
Other/Bi-Racial Male	0	0	0	0	N/C	N/C
Other/Bi-Racial Female	0	0	0	0	N/C	N/C

TRAFFIC

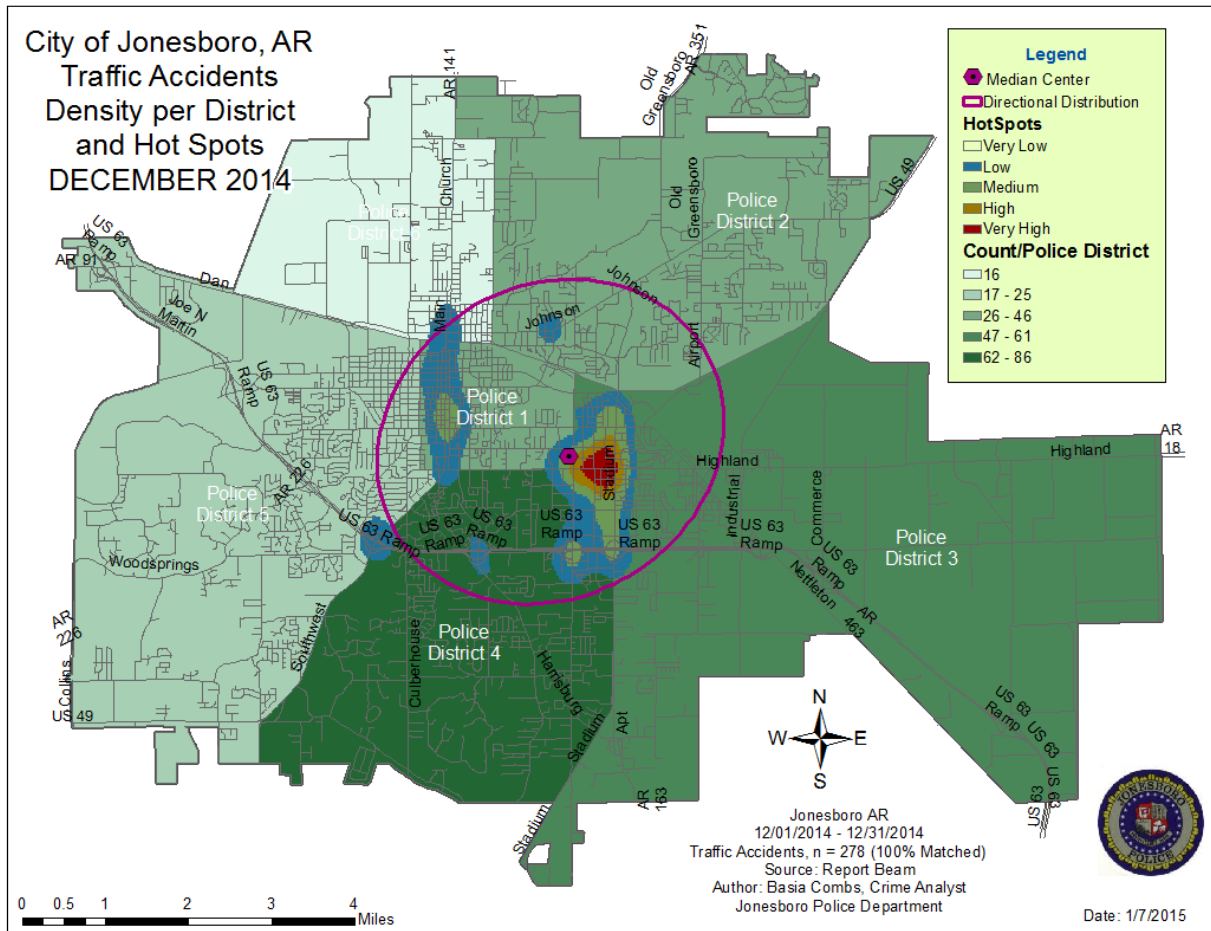
The Traffic Enforcement Unit responds to traffic accidents and provides increased enforcement in particularly challenging areas. This unit also provides extra coverage for specific congestion

problems and special events in the community. Last, they work details targeting specific issues, such as DWI enforcement and traffic safety checkpoints.

MONTHLY REPORT DECEMBER 2014

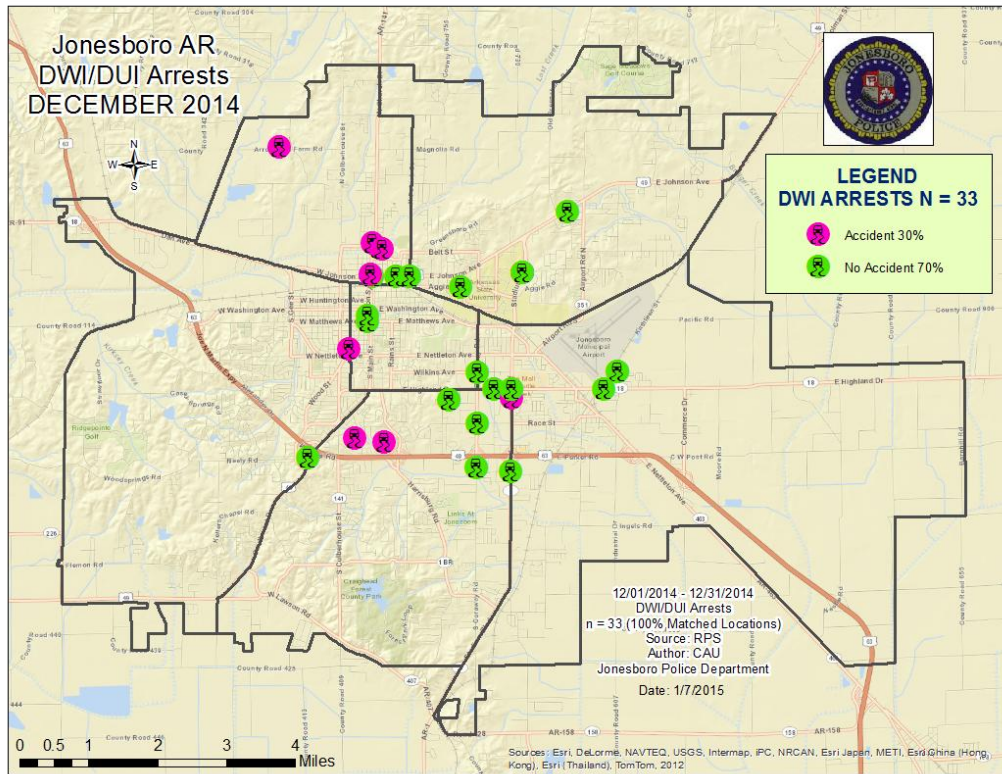
January 13, 2015

Incidents	This Month	This Month Last Year	YTD	Last YTD	Change By Month	Change YTD
Street Accidents	141	142	1683	1684	-1%	0%
Private Property Accidents	52	51	503	514	2%	-2%
Traffic Citations	94	56	1934	1181	68%	64%
DWI	2	2	23	17	0%	35%
Mis. Arrests	25	15	112	75	67%	49%
Felony Arrests	0	1	6	8	-100%	-25%
Drug Arrests	0	0	0	0	N/C	N/C
Public Intoxication Arrests	0	0	0	0	N/C	N/C
Calls For Service	88	201	1251	2767	-56%	-55%
Alarms	0	0	0	0	N/C	N/C
Parking Citations	0	0	0	0	N/C	N/C
Written Warnings	56	72	2266	1966	-22%	15%
TOTALS	458	540	7778	8212	-15%	-5%
Value of Asstes Seized	\$ -	\$ -	\$ -	\$ -	N/C	N/C
Patrol Miles	4,206	4,441	67,062	56,741	-5%	18%
Hours Worked	747	741	10745	9962	1%	8%



MONTHLY REPORT DECEMBER 2014

January 13, 2015



ANIMAL CONTROL

The Animal Control Division is responsible for educating the public on safe and humane issues regarding animal treatment, enforcing all animal laws and ordinances, assisting the public

in resolving animal issues, and protecting the safety and welfare of the citizens and animals in this community.

Incident/Service	This Month	This Month Last Year	YTD	Last YTD	Change By Month	Change YTD
Barking Complaints	2	4	77	96	-50%	-20%
Bite Reports	3	4	50	55	-25%	-9%
Door Hangers	79	36	647	586	119%	10%
Welfare Checks	103	34	695	676	203%	3%
Advised of Rights	867	907	11732	10789	-4%	9%
Incident Reports	4	2	49	29	100%	69%
Gone on Arrival	67	30	659	515	123%	28%
Complaints	622	501	9971	8184	24%	22%
Desk Complaints	1313	1519	17683	18188	-14%	-3%
Captured Dogs	128	153	1786	1805	-16%	-1%
Captured Cats	7	5	286	225	40%	27%
Captured Wildlife	21	7	376	454	200%	-17%
Chemical Captures	0	3	12	14	-100%	-14%
Traps	33	15	391	450	120%	-13%
Deceased Animals	129	36	739	608	258%	22%
Assist J.P.D.	2	8	65	71	-75%	-8%
Assist C.S.O.	0	5	104	37	-100%	181%
Public Relations	435	290	3800	4940	50%	-23%

MONTHLY REPORT DECEMBER 2014

January 13, 2015

Incident/Service	This Month	This Month Last Year	YTD	Last YTD	Change By Month	Change YTD
CITATIONS ISSUED	29	31	619	488	-6%	27%
WARNINGS ISSUED	135	117	1434	1327	15%	8%
Physical Arrests	20	0	41	47	N/C	-13%
City Warrants Served	20	4	147	74	400%	99%
County Warrants Served	0	0	2	3	N/C	-33%
Felony Bench Warrants	0	0	0	3	N/C	-100%
Euthanized	55	84	930	1206	-35%	-23%
Deceased Animals Landfill lbs.	1050	3180	29170	43710	-67%	-33%
Wildlife Euthanized	21	7	276	454	200%	-39%
Sent to Rescue Centers	35	10	192	76	250%	153%
Adoptions	46	52	582	427	-12%	36%
Miles Driven	9,043	8,459	96,384	109,249	7%	-12%

FLEET MAINTNANCE

The Fleet Maintenance is responsible for all of the police vehicle maintenance upkeep, cleanliness, and purchasing. In addition, this

Division handles most of the purchasing of equipment, supplies, and uniforms for all of the Police Department.

Repair Costs by Model Year	This Month	This Month Last Year	YTD	Last YTD	Change By Month	Change YTD
95-99	\$ -	\$ -	\$ -	\$ -	N/C	N/C
2000	\$ -	\$ -	\$ 2,068.09	\$ -	N/C	N/C
2001	\$ -	\$ -	\$ -	\$ -	N/C	N/C
2002	\$ -	\$ -	\$ -	\$ -	N/C	N/C
2003	\$ -	\$ -	\$ 331.48	\$ 1,791.95	N/C	-82%
2004	\$ 337.61	\$ -	\$ 944.01	\$ 2,113.93	N/C	-55%
2005	\$ -	\$ 753.54	\$ 2,351.10	\$ 1,010.55	-100%	133%
2006	\$ 1,740.55	\$ 269.97	\$ 19,806.15	\$ 31,227.47	545%	-37%
2007	\$ 206.60	\$ 1,426.09	\$ 19,595.76	\$ 29,618.13	-86%	-34%
2008	\$ 4,768.31	\$ 185.73	\$ 18,203.39	\$ 7,936.35	2467%	129%
2009	\$ 1,442.77	\$ 36.65	\$ 8,736.48	\$ 5,270.19	N/C	N/C
2010	\$ -	\$ -	\$ 2,603.03	\$ 442.57	N/C	N/C
2011	\$ 72.84	\$ 290.28	\$ 5,054.31	\$ 2,661.92	N/C	N/C
2012	\$ 66.98	\$ 232.53	\$ 1,250.81	\$ 418.87	N/C	N/C
2013	\$ -	\$ 11.66	\$ 1,685.62	\$ 591.79	N/C	N/C
2014	\$ 23.32	\$ -	\$ 3,136.08	\$ -	N/C	N/C
Totals	\$ 8,658.98	\$ 3,206.45	\$ 85,766.31	\$ 83,083.72	N/C	N/C

Routine Preventative Maintenance by Model Year	This Month	This Month Last Year	YTD	Last YTD	Change By Month	Change YTD
95-99	\$ 24.50	\$ -	\$ 24.50	\$ 174.13	N/C	-86%
2000	\$ -	\$ -	\$ 40.00	\$ 29.00	N/C	38%
2001	\$ -	\$ -	\$ -	\$ 186.59	N/C	-100%
2002	\$ -	\$ -	\$ -	\$ 20.00	N/C	-100%
2003	\$ -	\$ -	\$ 187.54	\$ 367.59	N/C	-49%
2004	\$ 40.00	\$ 497.95	\$ 1,261.77	\$ 1,255.89	-92%	0%
2005	\$ -	\$ 20.00	\$ 1,146.54	\$ 1,698.82	-100%	-33%
2006	\$ 845.61	\$ 1,169.14	\$ 6,913.17	\$ 13,132.34	-28%	-47%
2007	\$ 1,419.84	\$ 423.00	\$ 10,321.90	\$ 12,853.89	236%	-20%
2008	\$ 60.00	\$ 386.63	\$ 3,843.20	\$ 4,846.22	-84%	-21%
2009	\$ 1,281.98	\$ 76.00	\$ 7,006.77	\$ 7,113.36	N/C	N/C
2010	\$ -	\$ -	\$ 1,178.78	\$ 1,847.49	N/C	N/C
2011	\$ 1,215.42	\$ 1,680.30	\$ 16,914.42	\$ 11,431.99	N/C	N/C
2012	\$ 20.00	\$ -	\$ 1,860.49	\$ 667.25	N/C	N/C
2013	\$ 40.00	\$ -	\$ 1,565.81	\$ 1,451.40	N/C	N/C
2014	\$ 145.00	\$ -	\$ 3,743.66	\$ 457.80	N/C	N/C
Totals	\$ 5,092.35	\$ 4,253.02	\$ 56,008.55	\$ 57,533.76	N/C	N/C

MONTHLY REPORT DECEMBER 2014

January 13, 2015

RECORDS

The Records Division is responsible for providing administrative and clerical support to the department. Major responsibilities include entering the accident and incident reports and tickets into the records database management

system, assisting the general public for report requests, performing criminal backgrounds, serving as a switchboard at times, performing validations, and setting up and managing the payment plans out of court.

RECORDS	This Month	This Month Last Year	YTD	Last YTD	Change By Month	Change YTD
Incident/Arrest Reports Processed	1071	1025	14772	14692	4%	1%
Accident Reports Processed	278	210	2843	2561	32%	11%
Citations Processed	2232	2731	39671	46729	-18%	-15%
Warnings Processed	871	561	17346	9906	55%	75%
Backgrounds	2	9	91	217	-78%	-58%
Fingerprints	0	0	0	1240	N/C	-100%
Photos	0	0	2	8	N/C	-75%
Accident Requests	96	91	870	1402	5%	-38%
Accident Requests Online	204	124	1,811	1,411	65%	28%

PROFESSIONAL STANDARDS

The Office of Professional Standards, a unit within Administration, is charged with the compilation and updating of an extensive set of policies and procedures and providing a general operations guideline and code of conduct for officers to follow. In the event that a member of

the public does experience a negative interaction with an officer, mechanisms are in place for them to lodge a complaint. All complaints are reviewed and investigations completed in a timely manner.

Professional Standards	This Month	This Month Last Year	YTD	Last YTD	Change By Month	Change YTD
Opened (TOTAL)	1	2	64	74	-50%	-14%
Closed	1	2	63	68	-50%	-7%
Inquiries	1	2	54	56	-50%	-4%
Formal Investigations	0	0	13	10	N/C	30%
Sustained	0	2	33	31	-100%	6%
Not-Sustained	0	0	11	13	N/C	-15%
Exonerated	0	0	1	1	N/C	0%
Unfounded	1	0	18	7	N/C	157%

END OF REPORT

January 13, 2015



Contact Information

Basia Combs, MPA, CCIA | Crime Analyst | Office of Crime Analysis & Criminal Intelligence
Jonesboro Police Department | 410 W Washington Ave | Jonesboro, AR 72401
Ph: 870-336-7196 | E-mail: bcombs@jonesboro.org | www.jonesboropolice.com
