

# JONESBORO POLICE DEPARTMENT

## Monthly Report FEBRUARY 2012

Office of Crime Analysis & Criminal Intelligence  
410 W Washington Ave  
Jonesboro, AR 72401  
Basia Combs, Crime Analyst

### IN THIS REPORT

<b>CRIME ANALYSIS .....</b>	<b>1</b>
Total Crime .....	2
Crimes against Person .....	3
Property Crimes .....	4
Crimes of Proactive Policing 5	
Other Crimes.....	7
Arrest Demographics .....	8
<b>EMERGENCY 911 .....</b>	<b>9</b>
<b>UPD .....</b>	<b>10</b>
<b>_PROWL .....</b>	<b>11</b>
<b>CID .....</b>	<b>12</b>
<b>WARRANTS .....</b>	<b>13</b>
<b>DRUG TASK FORCE ....</b>	<b>14</b>
<b>TRAFFIC .....</b>	<b>15</b>
Maps .....	16
<b>PARKING</b>	
<b>ENFORCEMENT .....</b>	<b>17</b>
<b>ANIMAL CONTROL .....</b>	<b>17</b>
<b>FLEET MAINTENANCE</b>	<b>18</b>
<b>RECORDS .....</b>	<b>19</b>
<b>PROFESSIONAL</b>	
<b>STANDARDS .....</b>	<b>19</b>

*The purpose of the Jonesboro Police Department Monthly Report is to compile data into one integrated report for review, allowing for a seamless flow of information for better decision-making. After each department collates their monthly numbers and sends it to the Office of Crime Analysis, it is organized into sections of departmental data, analyzed and packaged, and finally disseminated to department heads, the Chief of Police, the City Mayor, and the City Council. Major sections include Crime Analysis, Emergency 911, Uniform Police Division, Prowl, Criminal Investigative Division, Warrants, Drug Task Force, Traffic, Parking Enforcement, Animal Control, Fleet Maintenance, Records, and Professional Standards.*

### **CRIME ANALYSIS**

The Crime Analysis division consists of one Crime Analyst and one part-time Crime Analyst Assistant. The Crime Analyst position is responsible for the analysis and dissemination of crime activity data and the collection and maintenance of crime intelligence information for the city of Jonesboro. Additionally, the Crime Analyst is charged with providing the department with current and accurate crime maps, presenting crime activity data to audiences of interest, and responding to requests for crime data from civilians and departmental staff. Data exported from this division is used by field agents for more effective, efficient policing, administration for improved staffing decisions, and the Mayor's office for community decision making and enhanced public relations. The following section is broken down into Total Crime, Crimes against Persons, Property Crimes, Crimes of Proactive Policing, Other Crimes, Arrest Demographics, Total Crime Monthly Comparison, and Next Month Predictions.

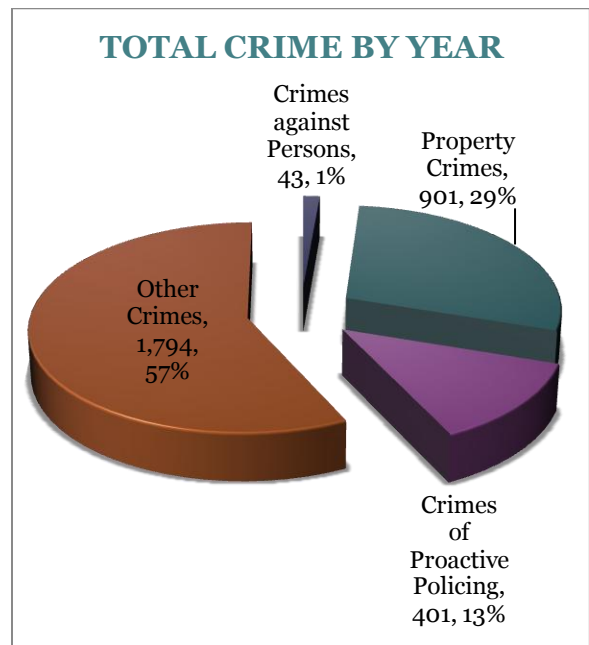
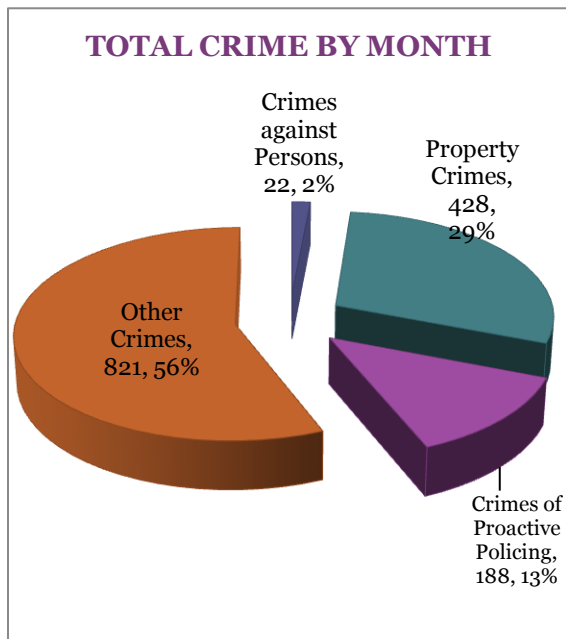
# MONTHLY REPORT JANUARY 2012

March 6, 2012

## TOTAL CRIME

The crime activity for the month of February 2012 was at a total of 1,459 offenses, a 7% decrease, comparing to a total of offenses in February last year. With Jonesboro population equal to 67,351, the crime rate was at 22 crimes per 1,000 population for the month of February this year, comparing to 23 crimes per 1,000 population last year<sup>1</sup>. As indicated on a pie chart below, Other Crimes absorb the majority, 56%, of this month's crime activity ( $n = 821$ ). Property crimes fall into a second place and comprise of 29% of all the crimes ( $n = 428$ ). Following in third and fourth places are crimes of proactive policing at 13% ( $n = 188$ ) and crimes against persons at 2% ( $n = 22$ ), respectively.

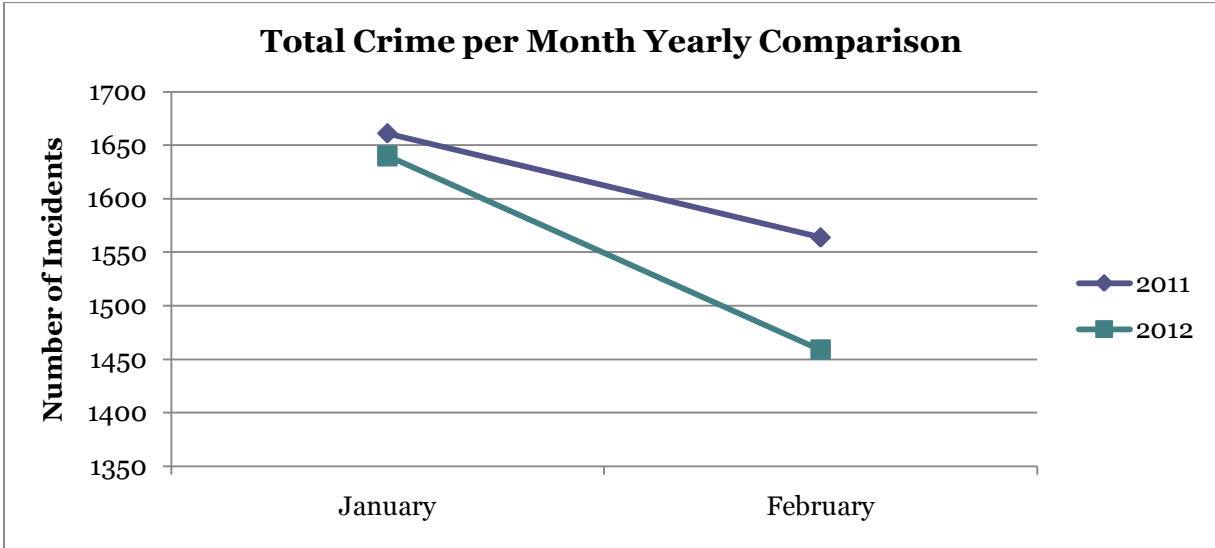
Year to date data includes number of crimes from January through February in 2012. A total of 3,139 offenses were reported in 2012, a 3% decrease, comparing to the same period last year. The year to date crime rate is down 3% and amounts to 47 offenses per 1,000 population, compared to 48 offenses per 1,000 population last year. A 57% of the total crimes is attributed to Other Crimes category ( $n = 1,794$ ). Property Crimes comprise of 29% of total crimes to date, where  $n = 901$ . Crimes of Proactive Policing amount to 13% ( $n = 401$ ) and crimes against persons comprise of 1% of total year to date number of crimes ( $n = 43$ ).



<sup>1</sup> Note: 2011 numbers are based on 2011 population estimate,  $n = 67,263$ .

# MONTHLY REPORT JANUARY 2012

March 6, 2012

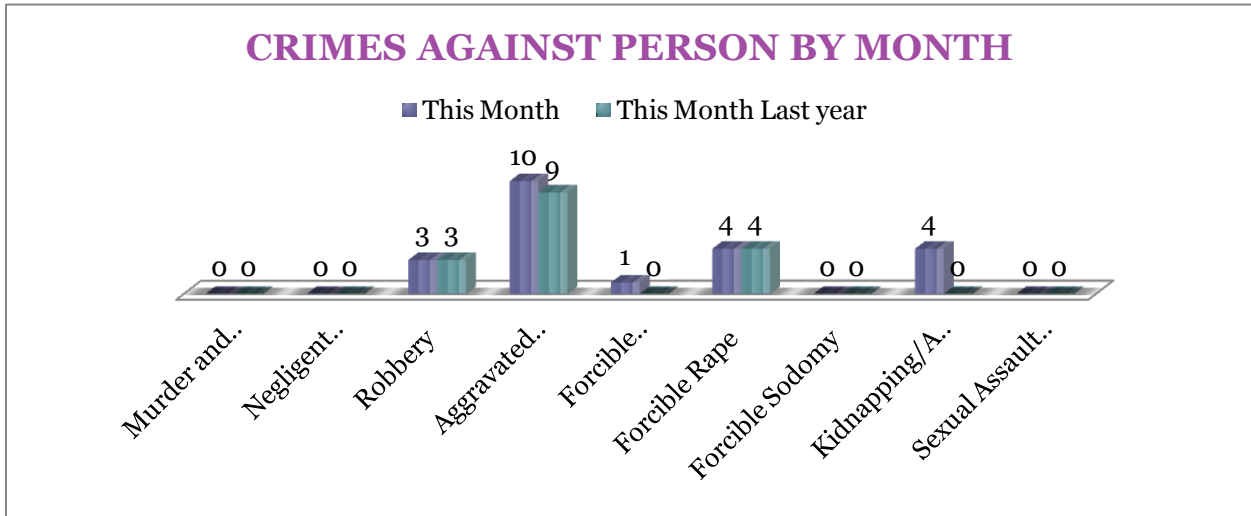


\* January's data differs from the last month's report due to changes in reporting techniques.

## CRIMES AGAINST PERSONS

There are 9 crimes that make up this section. There were a total of 22 offenses in this area this month, up 6 offenses overall, comparing to the last year's total in February. There were four more

kidnappings/abductions reported this month and as demonstrated on the bar chart below, there are no significant changes in other crimes for this category.

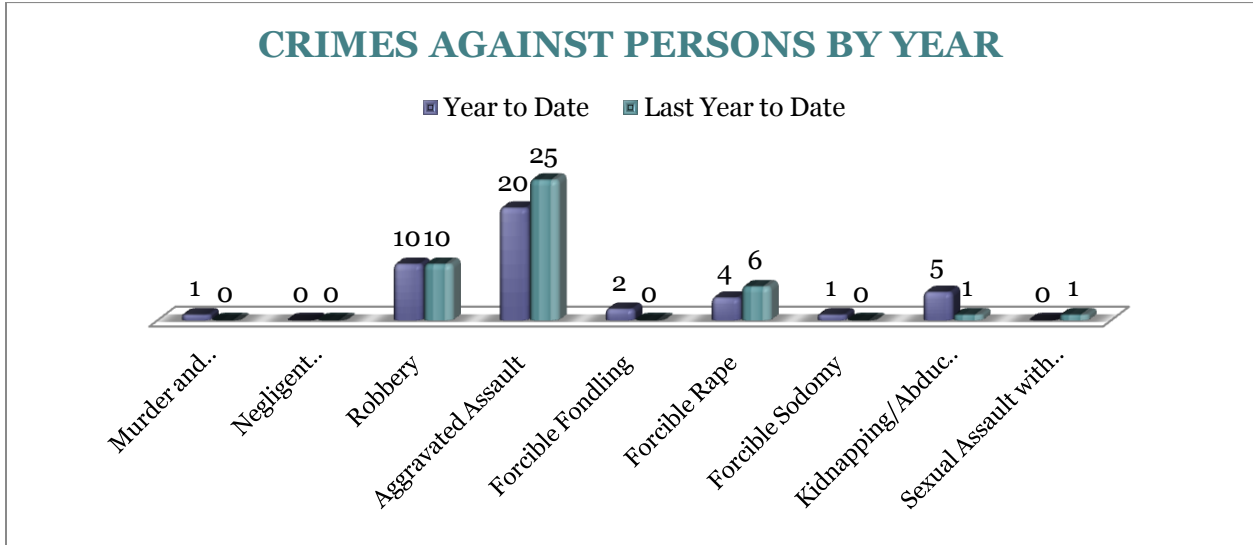


A bar graph on the following page shows the year to date data for Crimes against Persons, which amounts to a total of 43 incidents for this category of crimes, no

change, comparing to the year to date data of last year. Aggravated Assaults are 20% down and there were four more kidnappings/abductions reported this year.

# MONTHLY REPORT JANUARY 2012

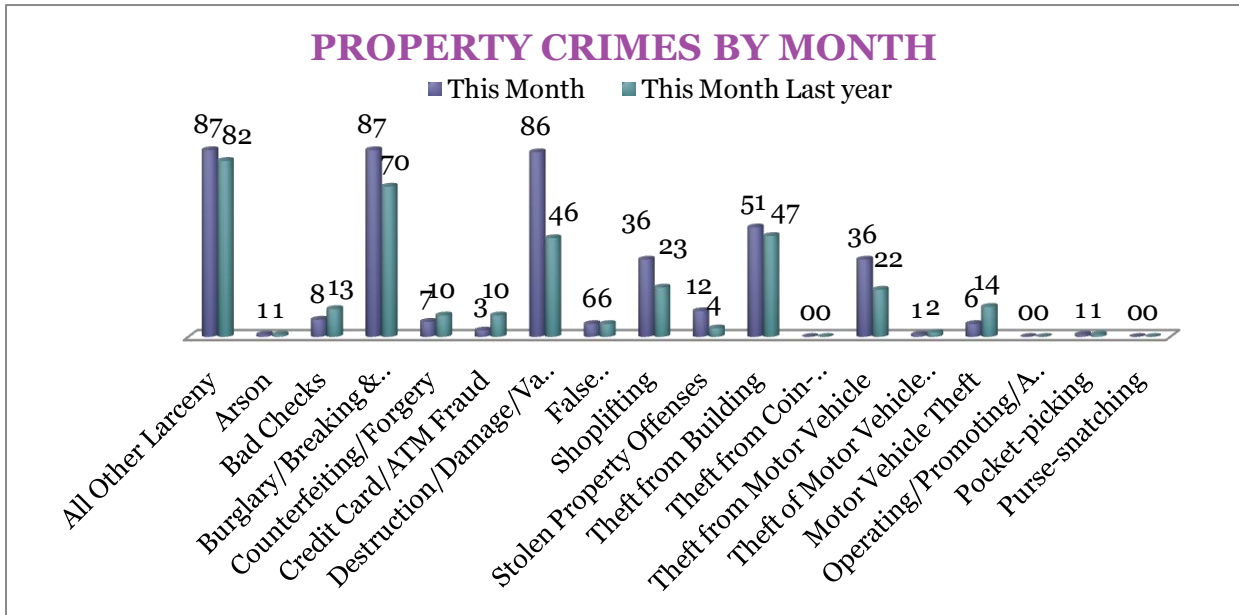
March 6, 2012



## PROPERTY CRIMES

This section displays the criminal activity for 18 crimes, all against property. This month, there were a total of 428 Property Crimes, a 22% increase comparing to February of the last year. The data indicates a significant change in

Destruction/Damage/Vandalism (up 87%) and Burglary/Breaking and Entering (up 24%). Another significant change can be noted in a decrease of Motor Vehicle Theft (down 45%).

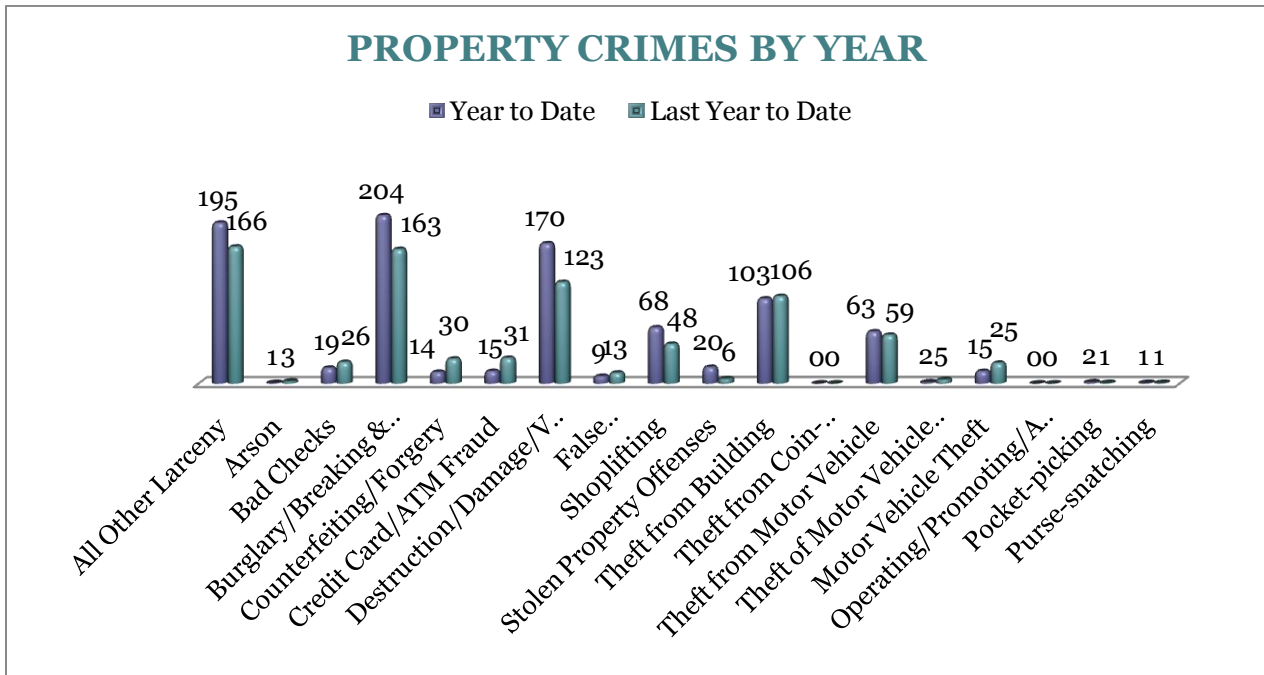


## MONTHLY REPORT JANUARY 2012

March 6, 2012

To date this year, 901 property offenses have occurred, a 12% increase, comparing to the last year's data at this same time. The following significant changes are noted this year: All Other Larceny (up 17%), Destruction/ Damage/Vandalism (up 38%),

Burglary/Breaking or Entering (up 25%), and Shoplifting (up 42%). The Motor Vehicle Theft decreased by 40%, Credit Card/ATM Fraud is down 52%, and Counterfeiting/Forgery is 53% down.



### CRIMES OF PROACTIVE POLICING

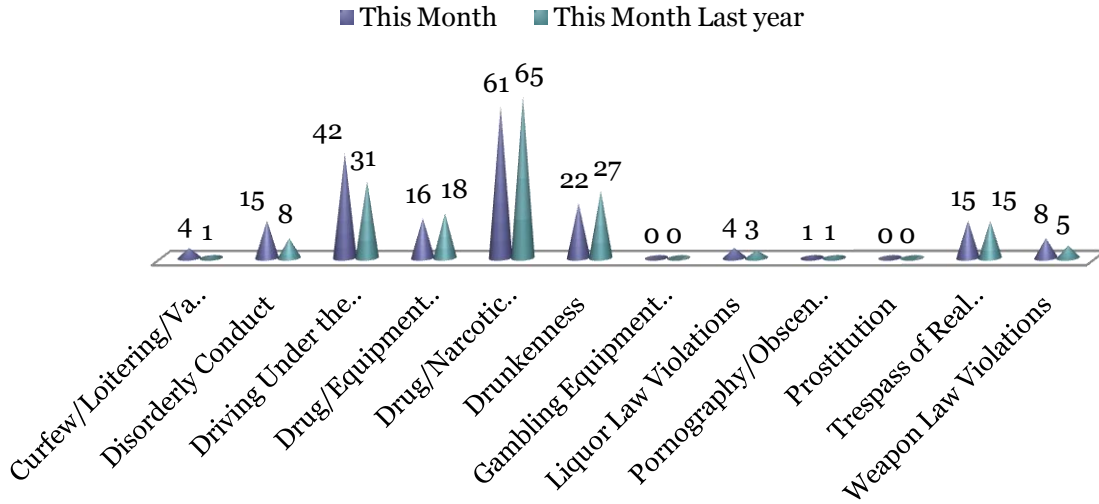
Crimes of Proactive Policing are those crimes that result from police officers actively policing the streets to combat certain types of street crime. As a chart on the following page indicates, twelve crimes fall under this category. A total of

188 offenses have occurred this month, an 8% increase, comparing to February last year. There is a significant increase in Driving Under the Influence (up 35%). There are no statistically significant changes noted for other offenses in this category.

# MONTHLY REPORT JANUARY 2012

March 6, 2012

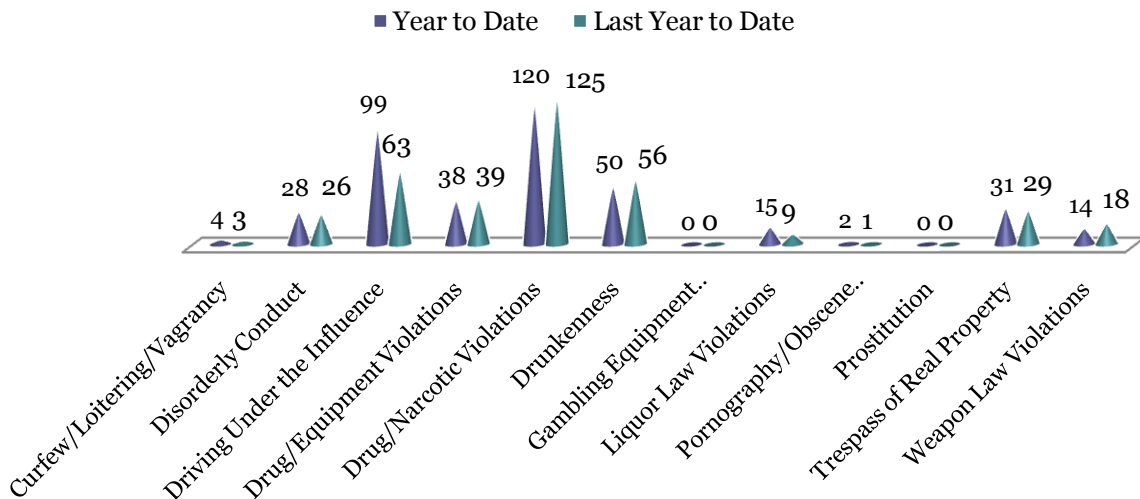
## CRIMES OF PROACTIVE POLICING BY MONTH



To date for the year 2012, there have been 401 crimes of proactive policing reported, a 9% increase, comparing to the last year's to date data. Driving Under the Influence is

significantly higher than at the same time last year (up 57%). There are no statistically significant changes noted for other offenses in this category.

## CRIMES OF PROACTIVE POLICING BY YEAR



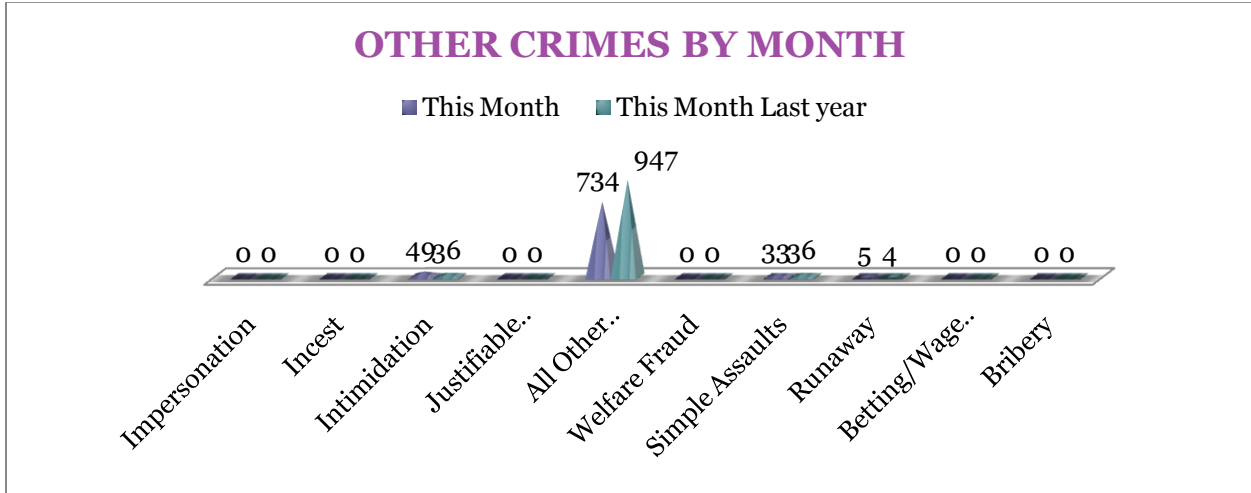
# MONTHLY REPORT JANUARY 2012

March 6, 2012

## OTHER CRIMES

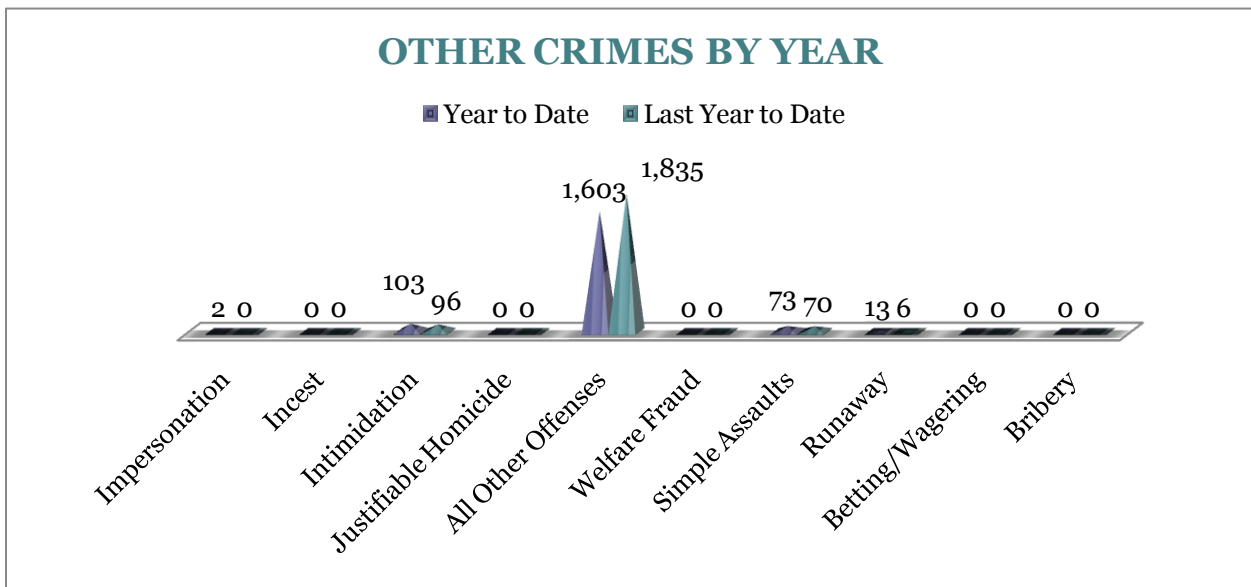
There are 10 crimes that fall into the Other Crimes category. This month, there have been a total of 821 Other Crimes, a 20% decrease, comparing to last February (n =

1023). Intimidation increased by 36%. All Other Offenses are 22% down. No other significant changes are noted in this category of crimes this month.



To date this year, there have been 1,794 Other Crimes offenses, an 11% decrease comparing to the last year's to date data. A notable change is observable for All Other Offenses that decreased by 13% No

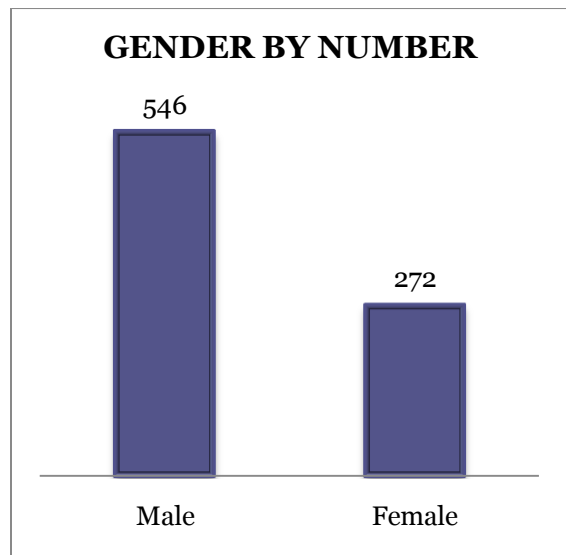
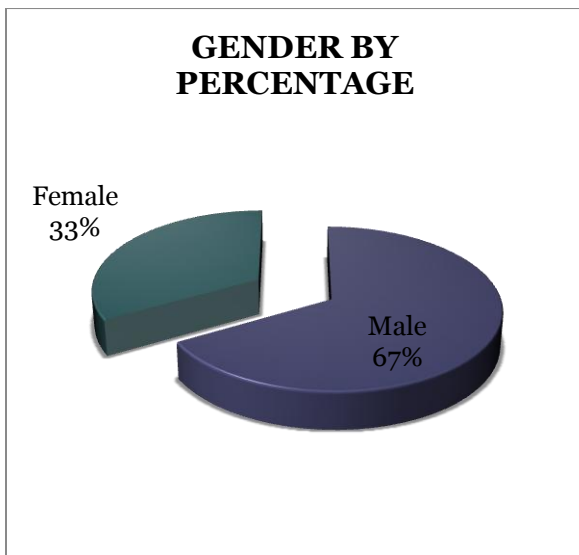
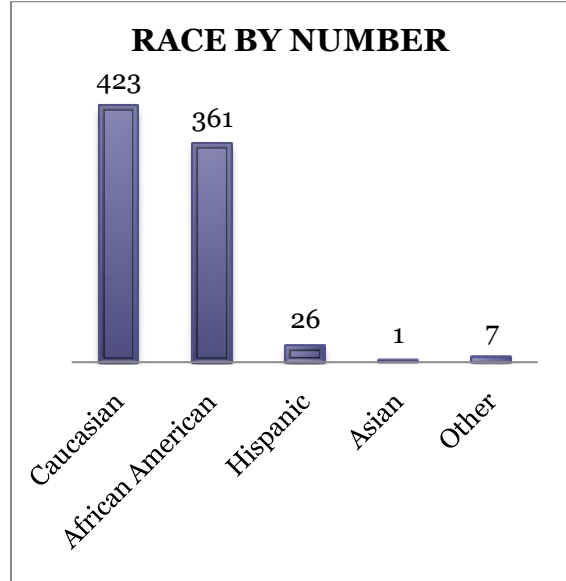
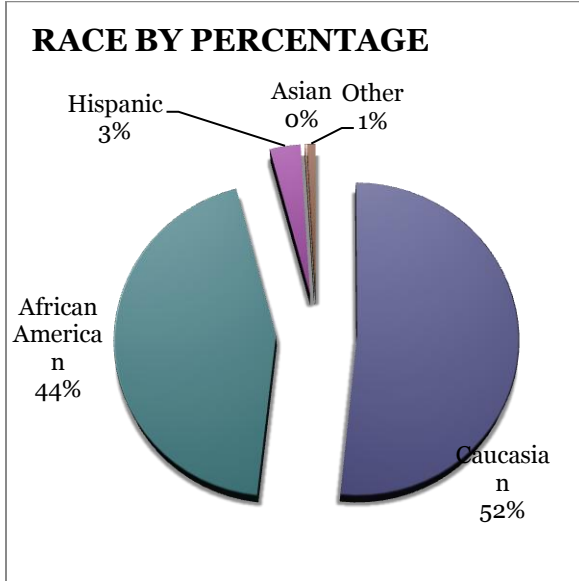
statistically significant changes have been observed for other offenses within this category, comparing to the last year's data.



ARREST DEMOGRAPHICS

In February, there were a total of 818 arrests. Comparing with the last year's data for the month of February, there was a 40% decrease in arrests; that is 56 arrests per 100 crimes in February of this year, comparing to 60 arrests per 100 crimes last year, a 6% decrease for arrests per 100 crimes. This section breaks down this

month's arrests by race and gender. The majority of offenders have been male ( $n = 546$ ), as opposed to female ( $n = 272$ ) and Caucasian ( $n = 423$ ) and African American ( $n = 361$ ) as opposed to Hispanic ( $n = 26$ ), Asian ( $n = 1$ ), or other/unknown/bi-racial ( $n = 7$ ).



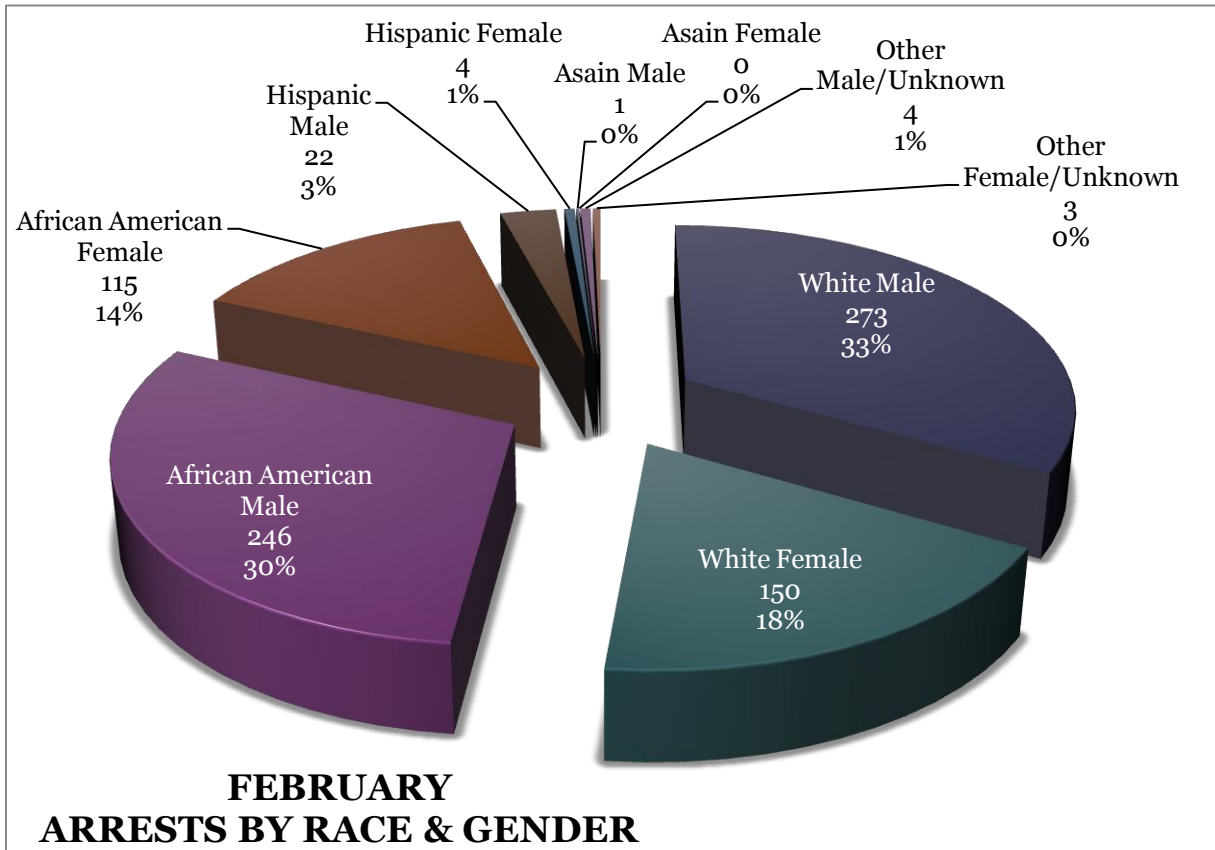


MONTHLY REPORT JANUARY 2012

March 6, 2012

Caucasian males make up the majority, 33%, of arrestees this month ( $n = 273$ ). African American males make up 30% of arrestees for the month of February ( $n = 246$ ). Caucasian females make up 18% ( $n = 150$ ) and African American females make

up 14% ( $n = 115$ ). Hispanic males make up 3% ( $n = 22$ ). Both Hispanic Females and Other/Biracial Male/Unknown make up 1% ( $n = 4$ ) each.



**EMERGENCY 911**

Also known as Public Safety Answering Point (PSAP), the Emergency 911 Division is responsible for answering all calls from public for emergency assistance, accessing the needed information to best assist, and then assigning the most efficient and effective emergency response. In addition,

this division is responsible for setting priority call dispatching to field units including Police, Fire, and EMS. Emergency 911 also maintains all records for radio logs, calls for service, and other emergency service data collections.

## MONTHLY REPORT JANUARY 2012

March 6, 2012

Calls by Type	This Month	This Month Last Year	YTD	Last YTD	Change By Month	Change YTD
Land Line E911	762	734	1,494	1,430	4%	4%
Cell Phone E911	3,711	3,237	7,798	6,816	15%	14%
Admin Lines - non emer	14,506	14,764	37,920	30,446	-2%	25%
<b>TOTALS</b>	<b>18,979</b>	<b>18,735</b>	<b>47,212</b>	<b>38,692</b>	<b>1%</b>	<b>22%</b>

Calls by Agency	This Month	This Month Last Year	YTD	Last YTD	Change By Month	Change YTD
Jonesboro PD Calls	6,636	5,741	13,993	11,489	16%	22%
Craighead Cty Sheriff	1,098	1,160	2,685	2,446	-5%	10%
Jonesboro Fire Dpt - dispatch	168	184	359	365	-9%	-2%
Jonesboro Fire Dpt - Med Asst	111	105	209	229	6%	-9%
Craighead Cty - Fire	63	55	115	96	15%	20%
Craighead Cty - 1st Responder	105	71	208	162	48%	28%
Emerson Ambulance	270	234	535	465	15%	15%
Medic One	276	251	544	546	10%	0%
Air Evac	0	1	0	1	-100%	-100%
Coroner	5	1	7	7	400%	0%
ARK State Police	15	6	28	27	150%	4%
Jonesboro Animal Control	3	11	3	51	-73%	-94%
Wreckers Called	141	166	314	322	-15%	-2%
<b>TOTALS</b>	<b>8,891</b>	<b>7,986</b>	<b>19,000</b>	<b>16,206</b>	<b>11%</b>	<b>17%</b>

Calls by Municipality	This Month	This Month Last Year	YTD	Last YTD	Change By Month	Change YTD
Bay PD	126	92	245	134	37%	83%
Bono PD	246	106	504	263	132%	92%
Brookland PD	219	161	403	326	36%	24%
Caraway PD	162	79	339	145	105%	134%
Cash PD	24	30	47	53	-20%	-11%
Egypt PD	8	11	13	18	-27%	-28%
Lake City PD	153	94	317	174	63%	82%
Monette PD	157	93	354	224	69%	58%
<b>TOTALS</b>	<b>1,095</b>	<b>666</b>	<b>2,222</b>	<b>1,337</b>	<b>64%</b>	<b>66%</b>

### UNIFORM PATROL DIVISION

The UPD is responsible for responding to calls into the Emergency - 911 Division by civilians and are normally the first responders. Jonesboro is divided into 6 patrol districts. Officers from UPD are assigned to a district and work the same

district every shift. In addition, when a Traffic Officer is not available, a UPD Officer will respond to traffic accidents and assist in directing traffic when necessary.

## MONTHLY REPORT JANUARY 2012

March 6, 2012

Incidents	This Month	This Month Last Year	YTD	Last YTD	Change By Month	Change YTD
Calls For Service	6,640	5,692	14,616	11,370	17%	29%
Complaints	3,613	2,771	7,255	6,447	30%	13%
Assists	1,071	1,540	2,251	3,196	-30%	-30%
Incident Reports	790	806	1,608	1,638	-2%	-2%
Street Accidents	60	86	115	154	-30%	-25%
Private Property Accidents	45	39	82	77	15%	6%
Traffic Stops	2,417	2,420	4,622	4,107	0%	13%
Traffic Citations	671	722	1,365	1,453	-7%	-6%
Written Warnings	960	692	1845	1,370	39%	35%
DWI	36	26	85	50	38%	70%
Mis. Arrests	452	476	958	1,135	-5%	-16%
Felony Arrests	88	55	171	207	60%	-17%
Warrants Served	1,428	1,392	2,744	2,626	3%	4%
Alarms	285	376	652	585		
<b>TOTALS</b>	<b>18,556</b>	<b>17,093</b>	<b>38,369</b>	<b>34,415</b>	<b>9%</b>	<b>11%</b>
Hours Worked	8,672	11,002	18,053	21,973	-21%	-18%

### PROWL

The Prowl unit is a uniformed street crimes unit specializing in criminal patrol, narcotics enforcement, gang investigation, and prostitution activity. The unit conducts directed patrols, investigates citizen

complaints of street-level criminal activity, and directly assists the 2<sup>nd</sup> Judicial Drug Task Force. PROWL also assists any division within the Jonesboro Police Department at any time when needed.

Incidents	This Month	This Month Last Year	YTD	Last YTD	Change By Month	Change YTD
Street Accidents	0	0	0	0	N/C	N/C
Private Property Accidents	0	0	0	0	N/C	N/C
Traffic Citations	44	54	64	99	-19%	-35%
DWI	0	1	0	0	-100%	N/C
Mis. Arrests	144	106	207	176	36%	18%
Felony Arrests	15	22	43	58	-32%	-26%
Drug Arrests	20	27	49	63	-26%	-22%
Public Intoxication Arrests	0	0	0	0	N/C	N/C
Calls For Service	88	98	121	219	-10%	-45%
Alarms	0	0	0	0	N/C	N/C
Parking Citations	0	0	0	0	N/C	N/C
Written Warnings	62	94	95	130	-34%	-27%
Assists	0	0	0	0	N/C	N/C
<b>TOTALS</b>	<b>373</b>	<b>402</b>	<b>579</b>	<b>745</b>	<b>-7%</b>	<b>-22%</b>
Value of Drugs Seized	\$4,650	\$3,500	\$11,650	\$13,050	33%	-11%
Value of Asstes Seized	7,950	14,349	15,350	16,279	-45%	-6%
Patrol Miles	6,550	5,050	11,150	9,570	30%	17%

## MONTHLY REPORT JANUARY 2012

March 6, 2012

### CRIMINAL INVESTIGATIVE DIVISION

The CID is responsible for conducting follow-up investigations into criminal acts reported to the Jonesboro Police Department. The primary goal is to collect and present evidence that conclusively

leads to a successful arrest. Additionally, CID is charged with clearing additional crimes, recovering stolen property, preventing additional crimes, and gathering intelligence information.

Investigations	This Month	This Month Last Year	YTD	Last YTD	Change By Month	Change YTD
Criminal Investigations Assigned	64	78	140	153	-18%	-8%
Criminal Investigations Closed	52	80	100	152	-35%	-34%
Cleared by Arrests	37	52	69	86	-29%	-20%
Unfounded	3	3	9	15	0%	-40%
Exceptionally Cleared	6	7	10	22	-14%	-55%
Filed With Prosecutors Office	4	5	8	8	-20%	0%
<b>TOTALS</b>	<b>166</b>	<b>225</b>	<b>336</b>	<b>436</b>	<b>-26%</b>	<b>-23%</b>

Crimes Against Persons	This Month	This Month Last Year	YTD	Last YTD	Change By Month	Change YTD
Criminal Investigations Assigned	14	10	27	28	40%	-4%
Criminal Investigations Closed	14	16	26	35	-13%	-26%
Cleared by Arrests	12	9	20	21	33%	-5%
Unfounded	0	0	2	1	N/C	100%
Exceptionally Cleared	0	5	1	9	-100%	-89%
Filed With Prosecutors Office	2	2	4	4	0%	0%
<b>TOTALS</b>	<b>42</b>	<b>42</b>	<b>80</b>	<b>98</b>	<b>0%</b>	<b>-18%</b>

Property Crimes	This Month	This Month Last Year	YTD	Last YTD	Change By Month	Change YTD
Criminal Investigations Assigned	43	58	102	105	-26%	-3%
Criminal Investigations Closed	34	49	64	89	-31%	-28%
Cleared by Arrests	23	43	47	63	-47%	-25%
Unfounded	3	3	6	11	0%	-45%
Exceptionally Cleared	6	2	8	13	200%	-38%
Filed With Prosecutors Office	2	1	3	2	100%	50%
<b>TOTALS</b>	<b>111</b>	<b>156</b>	<b>230</b>	<b>283</b>	<b>-29%</b>	<b>-19%</b>

Crimes Against Children	This Month	This Month Last Year	YTD	Last YTD	Change By Month	Change YTD
Criminal Investigations Assigned	4	4	5	7	0%	-29%
Criminal Investigations Closed	2	4	6	9	-50%	-33%
Cleared by Arrests	2	0	2	2	N/C	0%
Unfounded	0	2	1	5	-100%	-80%
Exceptionally Cleared	0	0	1	0	N/C	N/C
Filed With Prosecutors Office	0	2	2	2	-100%	0%
<b>TOTALS</b>	<b>8</b>	<b>12</b>	<b>17</b>	<b>25</b>	<b>-33%</b>	<b>-32%</b>
Miscellaneous Investigations Assigned	3	5	4	5	N/C	-20%
Miscellaneous Investigations Cleared	2	2	2	2	N/C	0%

## MONTHLY REPORT JANUARY 2012

March 6, 2012

### WARRANTS

The Warrants Division is responsible for serving warrants, criminal summonses, and subpoenas that are issued by the District Court. On city court days, the Warrants Division provides a bailiff for court and a transport officer. In addition, this Division is responsible for transporting wanted persons arrested in other jurisdictions back to Jonesboro. The STEP program operates within this division and is a grant-funded operation in which officers can get paid overtime to enforce the safety belt law.

Arrests	This Month	This Month Last Year	YTD	Last YTD	Change By Month	Change YTD
Misdemeanor	1107	1272	2727	2854	-13%	-4%
Felony	0	0	2	1	N/C	100%
<b>Total Arrests</b>	<b>1107</b>	<b>1272</b>	<b>2729</b>	<b>2855</b>	<b>-13%</b>	<b>-4%</b>

Warrants by Activity	This Month	This Month Last Year	YTD	Last YTD	Change By Month	Change YTD
Subpoenas	389	357	941	568	9%	66%
Commitments	4	5	5	6	-20%	-17%
Traffic Citations	3	2	11	4	50%	175%
Complaints	0	0	1	0	N/C	N/C
Assist	0	0	0	0	N/C	N/C
Alarms	0	0	0	0	N/C	N/C

Hours by Activity	This Month	This Month Last Year	YTD	Last YTD	Change By Month	Change YTD
SI Criminal	192	158	490	407	22%	20%
Court	111	105.5	216.83	221.33	5%	-2%
Prisoner Transport	22.5	27	42	52.5	-17%	-20%

Hours Worked	This Month	This Month Last Year	YTD	Last YTD	Change By Month	Change YTD
Regular Hours Worked	577	543.5	1246	1238.5	6%	1%
Overtime Hours Worked	6.5	3.5	12	13.5	86%	-11%
<b>TOTAL Hours Worked</b>	<b>583.5</b>	<b>547</b>	<b>1258</b>	<b>1252</b>	<b>7%</b>	<b>0%</b>

Mileage	This Month	This Month Last Year	YTD	Last YTD	Change By Month	Change YTD
<b>Total Mileage</b>	<b>2217</b>	<b>2337</b>	<b>4986</b>	<b>4602</b>	<b>-5%</b>	<b>8%</b>

STEP	This Month	This Month Last Year	YTD	Last YTD	Change By Month	Change YTD
DWI Arrest	1	0	3	2	N/C	50%
DUI Arrest	0	0	0	0	N/C	N/C
Traffic Citations	164	135	472	270	21%	75%
Felony Arrests	0	0	1	2	N/C	-50%
Drug Arrests	0	0	0	1	N/C	-100%
<b>STEP TOTALS</b>	<b>165</b>	<b>135</b>	<b>476</b>	<b>275</b>	<b>22%</b>	<b>73%</b>
<b>STEP Hours Worked</b>	<b>131</b>	<b>113.5</b>	<b>337</b>	<b>173.5</b>	<b>15%</b>	<b>94%</b>
<b>STEP Miles Driven</b>	<b>912</b>	<b>1057</b>	<b>2349</b>	<b>1503</b>	<b>-14%</b>	<b>56%</b>

# MONTHLY REPORT JANUARY 2012

March 6, 2012

## DRUG TASK FORCE

The DTF is responsible for investigating major drug traffickers in the area, including all types of illegal drugs. They

work closely with local, state, and federal agencies to eradicate drugs from the community.

INVESTIGATIONS	This Month	This Month Last Year	YTD	Last YTD	Change By Month	Change YTD
Opened	26	51	47	81	-49%	-42%
Closed	18	36	36	62	-50%	-42%
<b>TOTAL</b>	<b>44</b>	<b>87</b>	<b>83</b>	<b>143</b>	<b>-49%</b>	<b>-42%</b>

With Nexus to Jonesboro	This Month	This Month Last Year	YTD	Last YTD	Change By Month	Change YTD
Opened	25	41	46	76	-39%	-39%
Closed				0	N/C	N/C
<b>TOTAL</b>	<b>25</b>	<b>41</b>	<b>46</b>	<b>76</b>	<b>-39%</b>	<b>-39%</b>

Outside Jonesboro (No Known Nexus)	This Month	This Month Last Year	YTD	Last YTD	Change By Month	Change YTD
Opened	1	7	1	8	-86%	-88%
Closed	0	0		0	N/C	N/C
<b>TOTAL</b>	<b>1</b>	<b>7</b>	<b>1</b>	<b>8</b>	<b>-86%</b>	<b>-88%</b>

ASSISTANCE RENDERED	This Month	This Month Last Year	YTD	Last YTD	Change By Month	Change YTD
Assist to Outside Agencies	5	2	6	2	150%	200%
Assist to Jonesboro UPD/CID	10	18	25	38	-44%	-34%

ARRESTS	This Month	This Month Last Year	YTD	Last YTD	Change By Month	Change YTD
Miscellaneous	12	9	22	24	33%	-8%
Felony	26	67	46	129	-61%	-64%
Marijuana	3	8	5	20	-63%	-75%
Cocaine	2	3	4	4	-33%	0%
Crack Cocaine	0	2	4	6	-100%	-33%
Methamphetamine/ICE	13	17	18	30	-24%	-40%
LSD	0	0	0	0	N/C	N/C
Extasy (MDMA or Other Designer Drug)	0	0	0	0	N/C	N/C
Prescription	1	2	3	5	-50%	-40%
Opiates (Heroine, Opium)	0	1	0	1	-100%	-100%
Labs	0	1	2	4	-100%	-50%
All Other Drug Offenses	3	0	0	0	N/C	N/C

ARRESTS DEMOGRAPHICS	This Month	This Month Last Year	YTD	Last YTD	Change By Month	Change YTD
White	10	25	19	45	-60%	-58%
African American	4	13	10	21	-69%	-52%
Latino	6	1	9	1	500%	800%
Asian	0	0	0	0	N/C	N/C
Other/Bi-Racial	0	0	0	0	N/C	N/C
Male	18	34	26	50	-47%	-48%
Female	4	5	10	16	-20%	-38%
White Male	7	21	13	31	-67%	-58%
White Female	3	4	6	14	-25%	-57%
African American Male	4	12	7	19	-67%	-63%
African American Female	2	1	4	1	100%	300%
Latino Male	6	1	7	1	500%	600%
Latino Female	0	0	0	0	N/C	N/C
Asian Male	0	0	0	0	N/C	N/C
Asian Female	0	0	0	0	N/C	N/C
Other/Bi-Racial Male	0	0	0	0	N/C	N/C
Other/Bi-Racial Female	0	0	0	0	N/C	N/C

## MONTHLY REPORT JANUARY 2012

March 6, 2012

ASSET FORFEITURE	This Month	This Month Last Year	YTD	Last YTD	Change By Month	Change YTD
Vehicles Seized (No.)	0	0	0	0	N/C	N/C
Value of Assets Seized(Includes Value of vehicles)	\$2,400	\$15,905	\$2,400	\$15,905	-85%	-85%
Asset Value Awarded to Jonesboro PD (State)		\$0	\$0	\$0	N/C	N/C
Asset Value Awarded to Jonesboro PD (Federal)		\$0	\$0	\$0	N/C	N/C
Asset Value Awarded to Jonesboro PD (Total)		\$0	\$0	\$0	N/C	N/C

### TRAFFIC

Comprised of three motor units and three Chargers, the Traffic Enforcement Unit responds to traffic accidents and provides increased enforcement in particularly challenging areas. This unit also provides

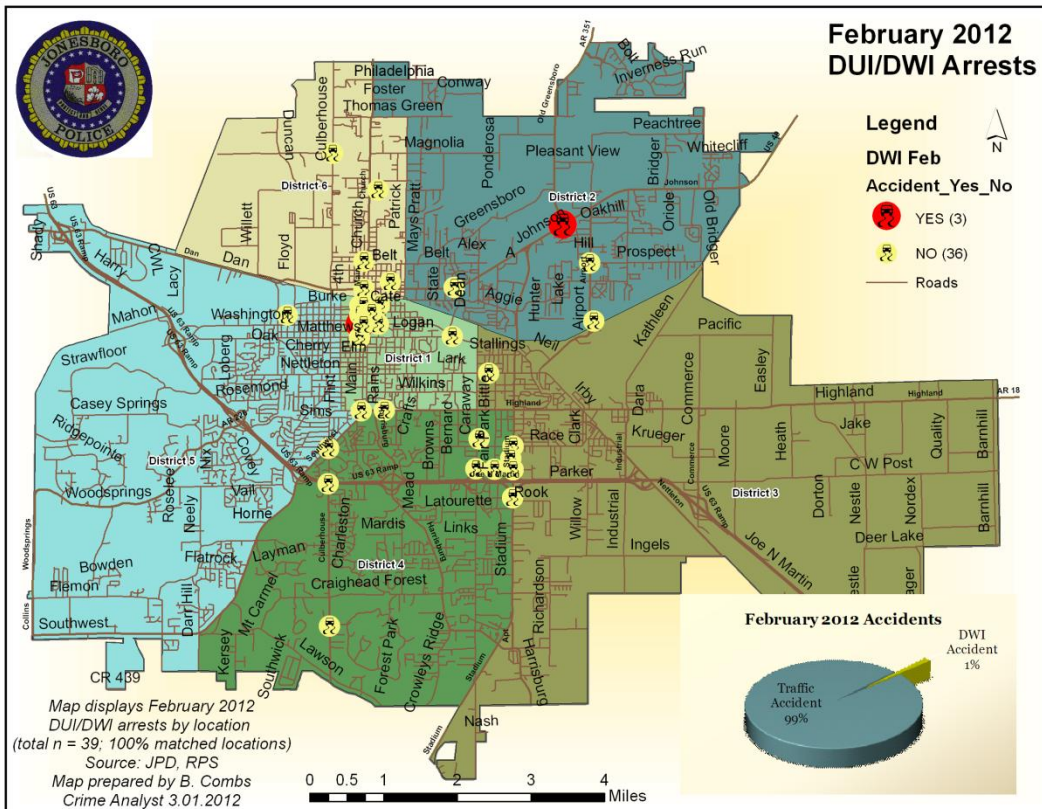
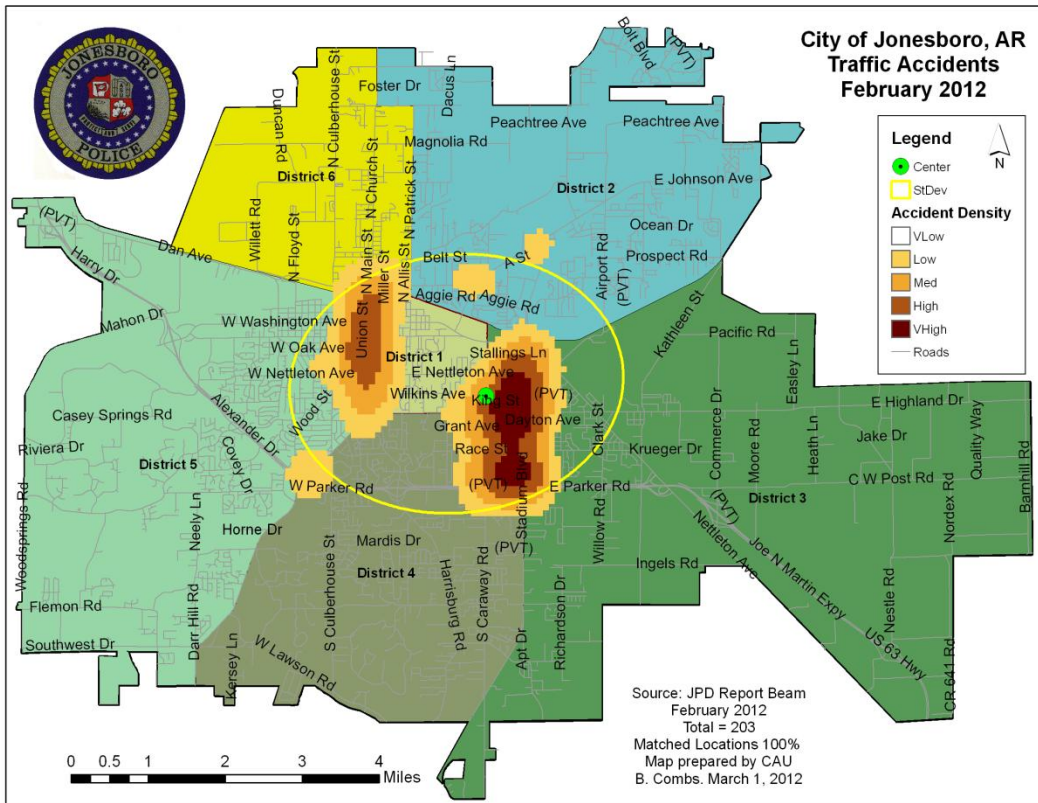
extra coverage for specific congestion problems and special events in the community. Last, they work details targeting specific issues, such as DWI enforcement and traffic safety checkpoints.

Incidents	This Month	This Month Last Year	YTD	Last YTD	Change By Month	Change YTD
Street Accidents	152	143	275	253	6%	9%
Private Property Accidents	38	58	79	87	-34%	-9%
Traffic Citations	152	196	268	318	-22%	-16%
DWI	3	4	4	8	-25%	-50%
Mis. Arrests	5	13	20	34	-62%	-41%
Felony Arrests	0	0	0	4	N/C	-100%
Drug Arrests	0	0	0	0	N/C	N/C
Public Intoxication Arrests	0	0	0	0	N/C	N/C
Calls For Service	243	276	456	495	-12%	-8%
Alarms	0	2	0	6	-100%	-100%
Parking Citations	0	0	0	0	N/C	N/C
Written Warnings	137	104	200	293	32%	-32%
<b>TOTALS</b>	<b>730</b>	<b>796</b>	<b>1302</b>	<b>1498</b>	<b>-8%</b>	<b>-13%</b>
Value of Asstes Seized	\$0	\$0	\$0	\$0	N/C	N/C
Patrol Miles	6,076	4,860	6,076	10,080	25%	-40%
Hours Worked	913.5	777.5	1830.5	1629.5	17%	12%



# MONTHLY REPORT JANUARY 2012

March 6, 2012





## MONTHLY REPORT JANUARY 2012

March 6, 2012

### PARKING ENFORCEMENT

The Parking Enforcement Division is responsible for enforcing parking laws in the downtown area. This service provides a

safe and convenient parking situation for the public.

CITATIONS ISSUED	This Month	This Month Last Year	YTD	Last YTD	Change By Month	Change YTD
Citations	39	28	70	68	39%	3%
Verbal Warnings	11	0	20	0	N/C	N/C
MINUTES BY ACTIVITY	This Month	This Month Last Year	YTD	Last YTD	Change By Month	Change YTD
Office	0	0	0	0	N/C	N/C
Admin(Non-Office)	1,085	525	2,515	2,170	107%	16%
Community	0	0	0	0	N/C	N/C
Training	480	95	600	95	405%	532%
Patrol	5,115	3,435	10,735	8,010	49%	34%

### ANIMAL CONTROL

The Animal Control Division is responsible for educating the public on safe and humane issues regarding animal treatment, enforcing all animal laws and ordinances, assisting the public in resolving animal

issues, and protecting the safety and welfare of the citizens and animals in this community.

Incidents	This Month 02/12	This Month Last Year	YTD 2012	Last YTD 2011	Change By Month	Change YTD
Barking Complaints	11	13	12	24	-15%	-50%
Bite Reports	3	7	9	15	-57%	-40%
Door Hangers	58	24	114	55	142%	107%
Welfare Checks	115	122	230	186	-6%	24%
Advised of Rights	851	489	1,663	965	74%	72%
Incident Reports	2	0	9	3	N/C	200%
Gone on Arrival	44	27	94	58	63%	62%
Complaints	716	618	1,354	1,172	16%	16%
Desk Complaints	1,236	1,383	2,621	2,780	-11%	-6%
Captured Dogs	160	123	340	267	30%	27%
Captured Cats	3	1	6	8	200%	-25%
Captured Wildlife	7	14	19	23	-50%	-17%
Chemical Captures	2	3	6	7	-33%	-14%
Traps	5	12	9	18	-58%	-50%
Deceased Animals	79	74	174	140	7%	24%
Assist J.P.D.	2	8	4	15	-75%	-73%
Assist C.S.O.	0	1	0	2	-100%	-100%
Public Relations	435	745	899	1,209	-42%	-26%
CITATIONS ISSUED	68	81	151	181	-16%	-17%
WARNINGS ISSUED	27	58	72	96	-53%	-25%

# MONTHLY REPORT JANUARY 2012

March 6, 2012

Incidents	This Month 02/12	This Month Last Year	YTD 2012	Last YTD 2011	Change By Month	Change YTD
Physical Arrests	0	2	0	2	-100%	-100%
City Warrants Served	2	12	8	18	-83%	-56%
County Warrants Served	0	0	0	0	N/C	N/C
Felony Bench Warrants	0	0	0	0	N/C	N/C
Euthanized	65	13	134	73	400%	84%
Deceased Animals Landfill lbs.	3,200	1,940	7,400	5,520	65%	34%
Wildlife Euthanized	7	14	19	23	-50%	-17%
Sent to Rescue Centers	6	0	21	12	N/C	75%
Adoptions	42	46	93	88	-9%	6%
Miles Driven	7,045	6,453	12,617	13,085	9%	-4%

*\* Above numbers are based on work performed by 4 officers*

## FLEET MAINTNANCE

The Fleet Maintenance is responsible for all of the police vehicle maintenance upkeep, cleanliness, and purchasing. In addition,

this Division handles most of the purchasing of equipment, supplies, and uniforms for all of the Police Department.

Repair Costs by Model Year	This Month	This Month Last Year	YTD	Last YTD	Change By Month	Change YTD
95-99	\$0.00	\$0.00	\$0.00	\$0.00	N/C	N/C
2000	\$0.00	\$150.44	\$0.00	\$150.44	-100%	-100%
2001	\$0.00	\$0.00	\$300.46	\$11.61	N/C	2488%
2002	\$0.00	\$0.00	\$0.00	\$0.00	N/C	N/C
2003	\$0.00	\$0.00	\$0.00	\$0.00	N/C	N/C
2004	\$845.05	\$0.00	\$1,143.07	\$282.82	N/C	304%
2005	\$481.93	\$651.38	\$556.46	\$662.94	-26%	-16%
2006	\$1,079.04	\$4,358.12	\$3,269.18	\$5,625.36	-75%	-42%
2007	\$620.66	\$780.97	\$2,208.21	\$1,305.32	-21%	69%
2008	\$407.97	\$1,063.97	\$407.97	\$1,164.95	-62%	-65%
2009	\$127.62	\$34.83	\$139.23	\$84.42	N/C	N/C
2010	\$0.00	\$0.00	\$0.00	\$0.00	N/C	N/C
2011	\$252.48	n/a	\$469.69	n/a	N/C	N/C
<b>Totals</b>	<b>\$3,814.75</b>	<b>\$7,039.71</b>	<b>\$8,494.27</b>	<b>\$9,287.86</b>	<b>-46%</b>	<b>-9%</b>

## MONTHLY REPORT JANUARY 2012

March 6, 2012

Routine Preventative Maintenance by Model Year	This Month	This Month Last Year	YTD	Last YTD	Change By Month	Change YTD
95-99	\$0.00	\$0.00	\$0.00	\$0.00	N/C	N/C
2000	\$0.00	\$0.00	\$0.00	\$0.00	N/C	N/C
2001	\$0.00	\$0.00	\$0.00	\$0.00	N/C	N/C
2002	\$0.00	\$10.30	\$20.00	\$10.30	-100%	94%
2003	\$0.00	\$0.00	\$92.00	\$0.00	N/C	N/C
2004	\$40.00	\$100.00	\$129.00	\$633.12	-60%	-80%
2005	\$121.00	\$162.50	\$298.35	\$811.24	-26%	-63%
2006	\$1,216.24	\$1,635.21	\$3,990.88	\$3,280.51	-26%	22%
2007	\$1,782.16	\$269.35	\$3,953.25	\$1,705.61	562%	132%
2008	\$94.20	\$88.00	\$1,352.54	\$473.07	7%	186%
2009	\$1,226.81	\$202.00	\$1,998.75	\$281.46	N/C	N/C
2010	\$371.95	\$0.00	\$466.95	\$0.00	N/C	N/C
2011	\$0.00	n/a	\$232.00	n/a	N/C	N/C
<b>Totals</b>	<b>\$4,852.36</b>	<b>\$2,467.36</b>	<b>\$12,533.72</b>	<b>\$7,195.31</b>	<b>97%</b>	<b>74%</b>

### RECORDS

The Records Division is responsible for providing administrative and clerical support to the department. Major responsibilities include entering the accident and incident reports and tickets into the records database management

system, assisting the general public for report requests, performing criminal backgrounds, serving as a switchboard at times, performing validations, and setting up and managing the payment plans out of court.

RECORDS	This Month	This Month Last Year	YTD	Last YTD	Change By Month	Change YTD
Incident/Arrest Reports Processed	1204	1208	2550	2399	0%	6%
Accident Reports Processed	204	188	384	367	9%	5%
Citations Processed	3951	4397	8497	8801	-10%	-3%
Warnings Processed	989	734	1750	1253	35%	40%
Backgrounds	18	22	35	42	-18%	-17%
Fingerprints	136	185	233	265	-26%	-12%
Photos	0	0	0	0	N/C	N/C
Accident Requests	168	88	296	182	91%	63%
Accident Requests Online	92	150	176	300	-39%	-41%
<b>TOTALS</b>	<b>6,762</b>	<b>6,972</b>	<b>13,921</b>	<b>13,609</b>	<b>-3%</b>	<b>2%</b>

### PROFESSIONAL STANDARDS

The Office of Professional Standards, a unit within Administration, is charged with the compilation and updating of an extensive set of policies and procedures and

providing a general operations guideline and code of conduct for officers to follow. In the event that a member of the public does experience a negative interaction

## MONTHLY REPORT JANUARY 2012

March 6, 2012

with an officer, mechanisms are in place for them to lodge a complaint. All complaints are reviewed and investigations

completed in a timely manner. (See next page for details)

Professional Standards	This Month	This Month Last Year	YTD	Last YTD	Change By Month	Change YTD
Opened (TOTAL)	2	4	10	12	-50%	-17%
Closed	2	2	10	10	0%	0%
Inquiries	2	4	10	11	-50%	-9%
Formal Investigations	0	0	0	1	N/C	-100%
Sustained	2	2	9	7	0%	29%
Not-Sustained	0	0	0	0	N/C	N/C
Exonerated	0	0	1	0	N/C	N/C
Unfounded	0	0	0	3	N/C	-100%

*END OF REPORT*