

JONESBORO POLICE DEPARTMENT

Monthly Report

August 2012

Office of Crime Analysis & Criminal Intelligence
410 W Washington Ave
Jonesboro, AR 72401
Basia Combs, Crime Analyst

IN THIS REPORT

CRIME ANALYSIS	1
Total Crime	2
Crimes against Person	3
Property Crimes	4
Crimes of Proactive Policing	5
Other Crimes.....	6
EMERGENCY 911	9
UPD	10
PROWL	10
CID	11
WARRANTS	12
DRUG TASK FORCE	13
TRAFFIC	14
Maps	15
PARKING ENFORCEMENT	16
ANIMAL CONTROL	17
FLEET MAINTENANCE	17
RECORDS	18
PROFESSIONAL STANDARDS	19

The purpose of the Jonesboro Police Department Monthly Report is to compile data into one integrated report for review, allowing for a seamless flow of information for better decision-making. After each department collates their monthly numbers and sends it to the Office of Crime Analysis, it is organized into sections of departmental data, analyzed and packaged, and finally disseminated to department heads, the Chief of Police, the City Mayor, and the City Council. Major sections include Crime Analysis, Emergency 911, Uniform Police Division, Prowl, Criminal Investigative Division, Warrants, Drug Task Force, Traffic, Parking Enforcement, Animal Control, Fleet Maintenance, Records, and Professional Standards.

CRIME ANALYSIS

The Crime Analysis division consists of one Crime Analyst and one part-time Crime Analyst Assistant. The Crime Analyst position is responsible for the analysis and dissemination of crime activity data and the collection and maintenance of crime intelligence information for the city of Jonesboro. Additionally, the Crime Analyst is charged with providing the department with current and accurate crime maps, presenting crime activity data to audiences of interest, and responding to requests for crime data from civilians and departmental staff. Data exported from this division is used by field agents for more effective, efficient policing, administration for improved staffing decisions, and the Mayor's office for community decision making and enhanced public relations. The following section is broken down into Total Crime, Crimes against Persons, Property Crimes, Crimes of Proactive Policing, Other Crimes, Arrest Demographics, Total Crime Monthly Comparison, and Next Month Predictions.

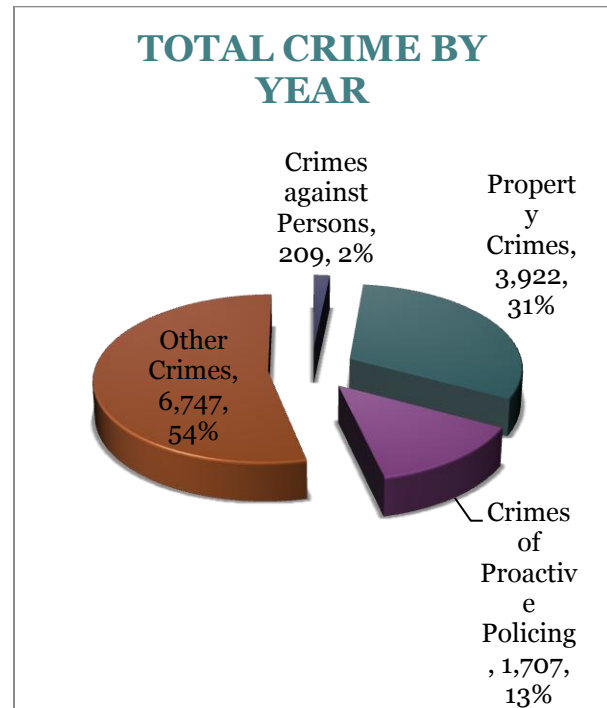
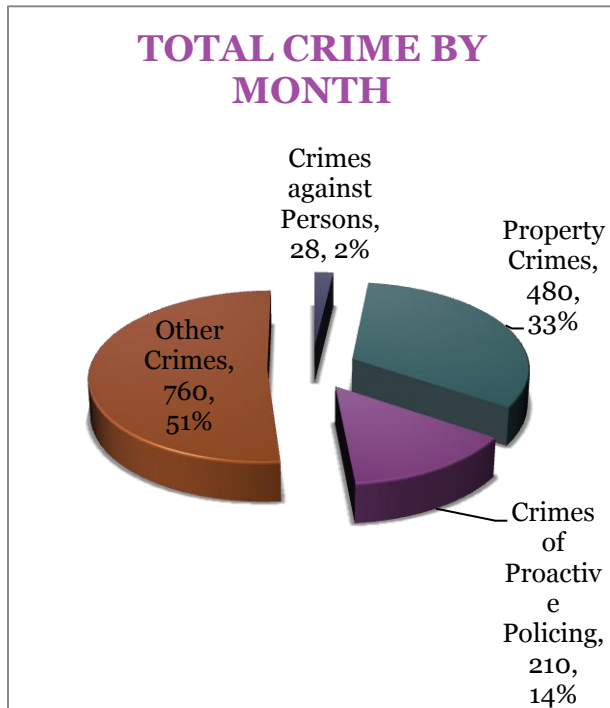
MONTHLY REPORT August 2012

September 11, 2012

TOTAL CRIME

The crime activity for the month of August 2012 was at a total of 1,478 NIBRIS reportable offenses, a 20% decrease, comparing to a total of offenses in August last year. With Jonesboro population equal to 67,351, the crime rate was at 22 crimes per 1,000 population for the month of August this year, comparing to 28 crimes per 1,000 population last year¹, a 20% decrease. As indicated on a pie chart below, Other Crimes absorb the majority, 51%, of this month's crime activity ($n = 760$). Property crimes fall into a second place and comprise of 33% of all the crimes ($n = 480$). Following in third and fourth places are crimes of proactive policing at 14% ($n = 210$) and crimes against persons at 2% ($n = 28$), respectively.

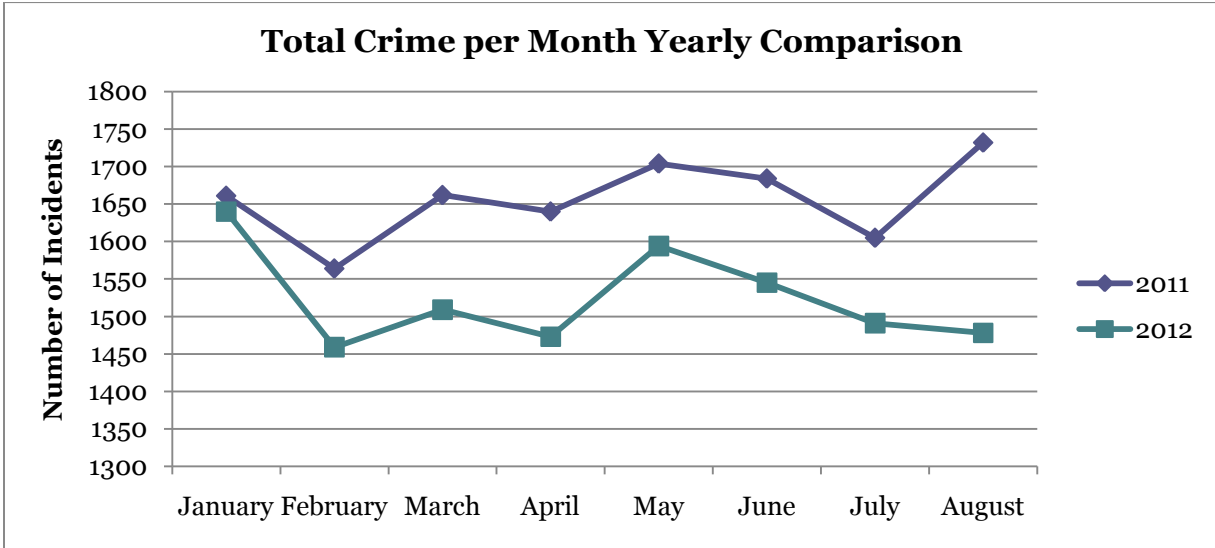
Year to date data includes number of crimes from January through August 2012. A total of 12,585 NIBRIS reportable offenses were reported in 2012, a 9% decrease, comparing to the same period last year. The year to date crime rate amounts to 187 offenses per 1,000 population, compared to 1205 offenses per 1,000 population last year. A 54% of all the crimes is attributed to Other Crimes category ($n = 6,747$). Property Crimes comprise of 31% of all the crimes to date, where $n = 3,922$. Crimes of Proactive Policing amount to 13% ($n = 1,707$) and crimes against persons comprise of 2% of a total year to date number of crimes ($n = 209$).



¹ Note: 2011 numbers are based on 2011 population estimate, $n = 67,263$.

MONTHLY REPORT August 2012

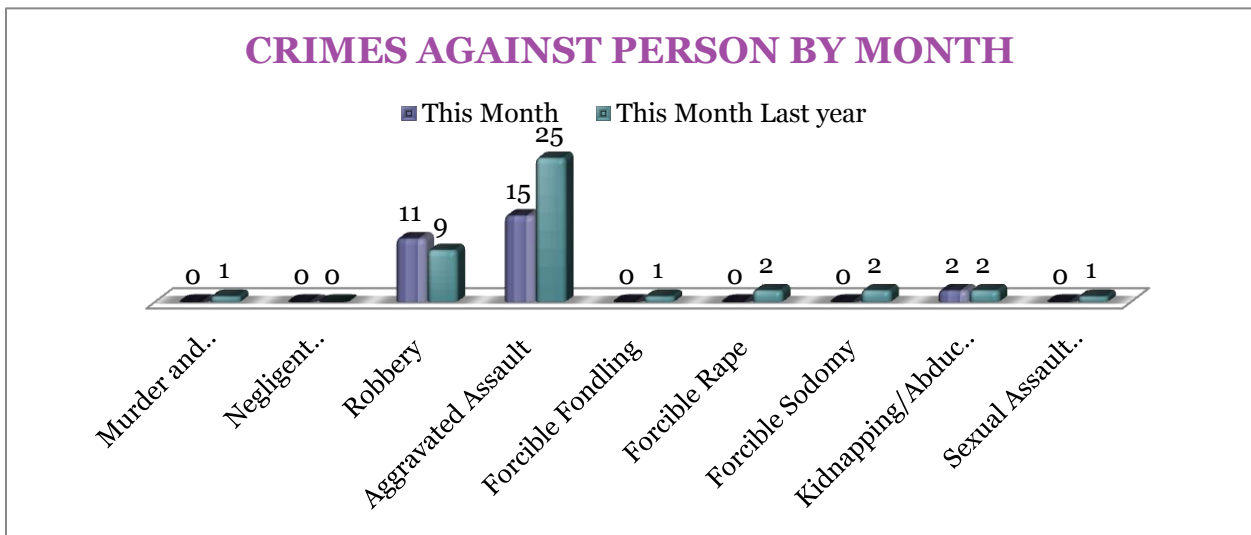
September 11, 2012



CRIMES AGAINST PERSONS

There are 9 crimes that make up this section. There were a total of 37 offenses in this area this month, a 35% decrease, comparing to the last year's total in August. Aggravated Assaults are down 40%

and Robberies are up 22% this month. Forcible Rape decreased by two offenses. As demonstrated on the bar chart below, there are no significant changes in other crimes for this category.

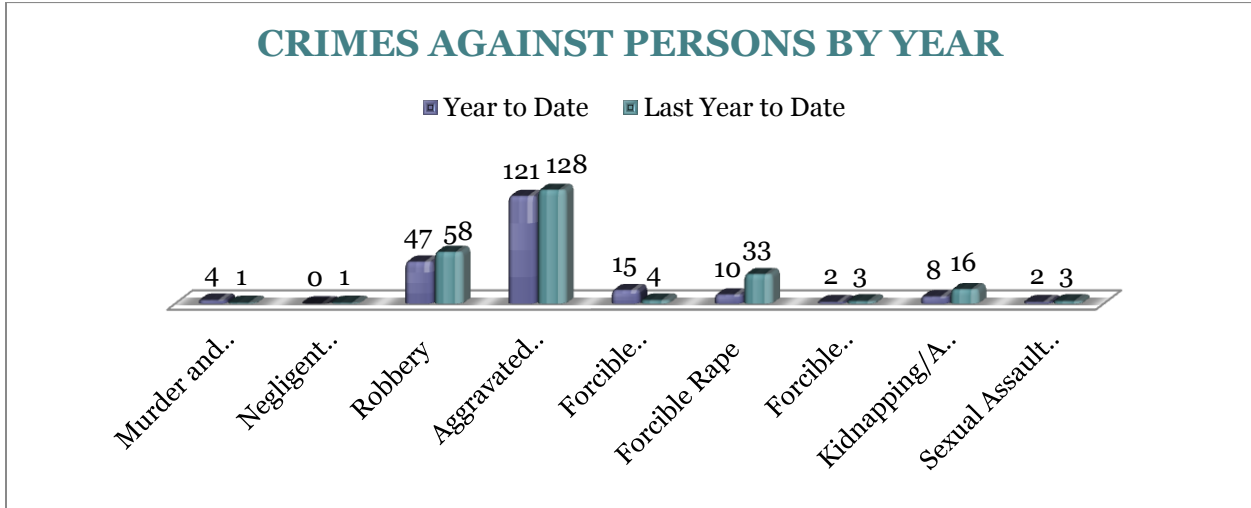


A bar graph on the following page shows the year to date data for Crimes against Persons, which amounts to a total of 209 incidents for this category of crimes, a 15% decrease, comparing to the year to date

data of last year. Forcible Foundlings are up by 11 offences. Robberies are down 19%, and forcible rapes are down 70%. To date we have 3 more murders than last year to date.

MONTHLY REPORT August 2012

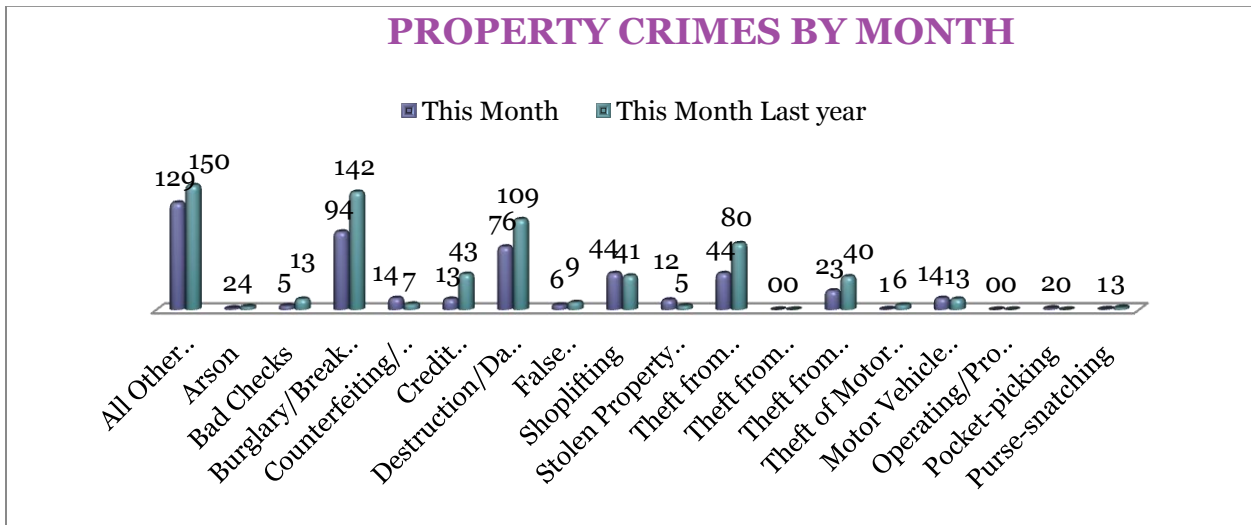
September 11, 2012



PROPERTY CRIMES

This section displays the criminal activity for 18 crimes, all against property. This month, there were a total of 480 Property Crimes, a 28% decrease comparing to August of last year. The data indicates a significant change in All Other Larceny

(down 14%), Burglary/Breaking & Entering (down 34%), Destruction / Damage / Vandalism (down 30%), and Theft from Motor Vehicle (down 21%). Stolen Properties has increased by 7 offences and Shoplifting increased by 3 offenses.

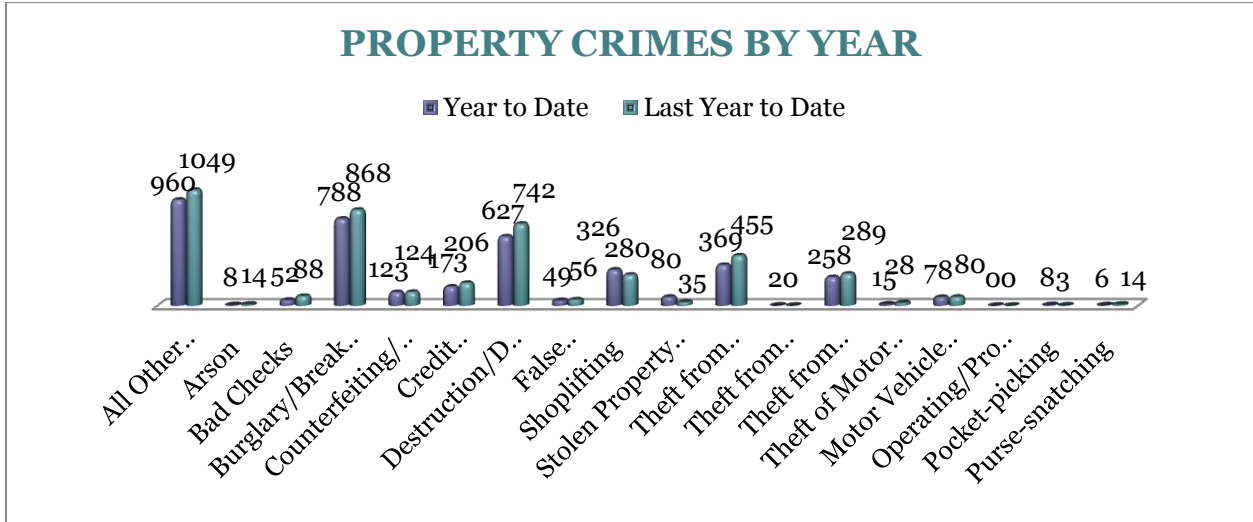


To date this year, 3,922 property offenses have occurred, a 9% decrease, comparing to the last year's data at this same time. The following significant changes are noted this year: All Other Larceny (down 8%),

Burglary/Breaking or Entering (down 9%), Destruction/Damage/Vandalism (down 15%), and Theft from Building (down 19%) while Stolen Property Offenses increased by 129% and Shoplifting increased by 16%.

MONTHLY REPORT August 2012

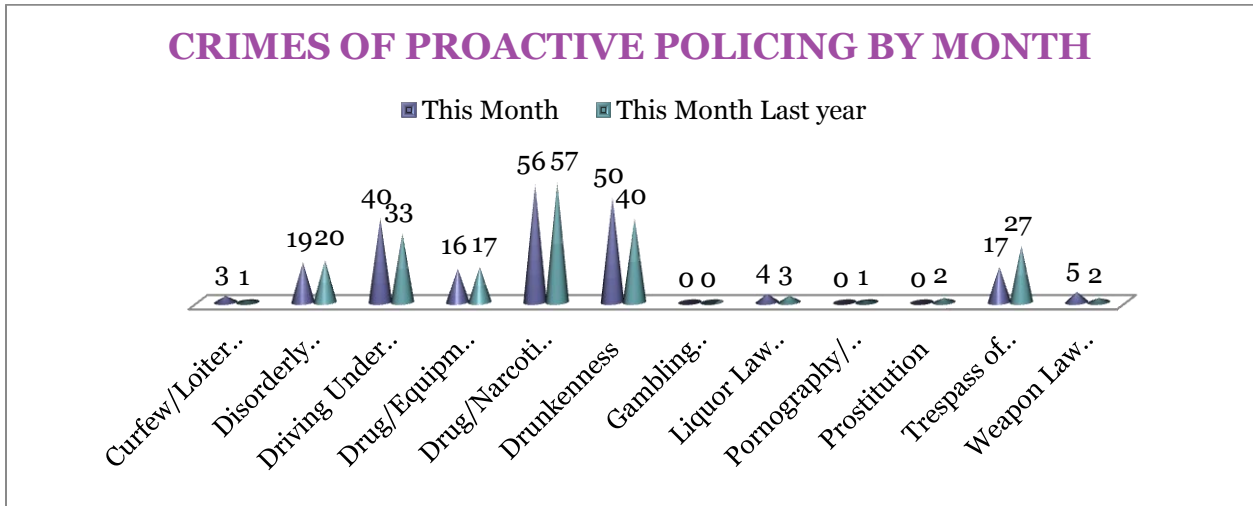
September 11, 2012



CRIMES OF PROACTIVE POLICING

Crimes of Proactive Policing are those crimes that result from police officers actively policing the streets to combat certain types of street crime. As a chart below indicates, twelve crimes fall under this category. A total of 210 offenses have

occurred this month, a 3% increase, comparing to August last year. There is a significant increase in Driving Under the Influence (up 21%). Drunkenness is up 35%, and Trespass of Real Property is down 37%, comparing to August of the last year.

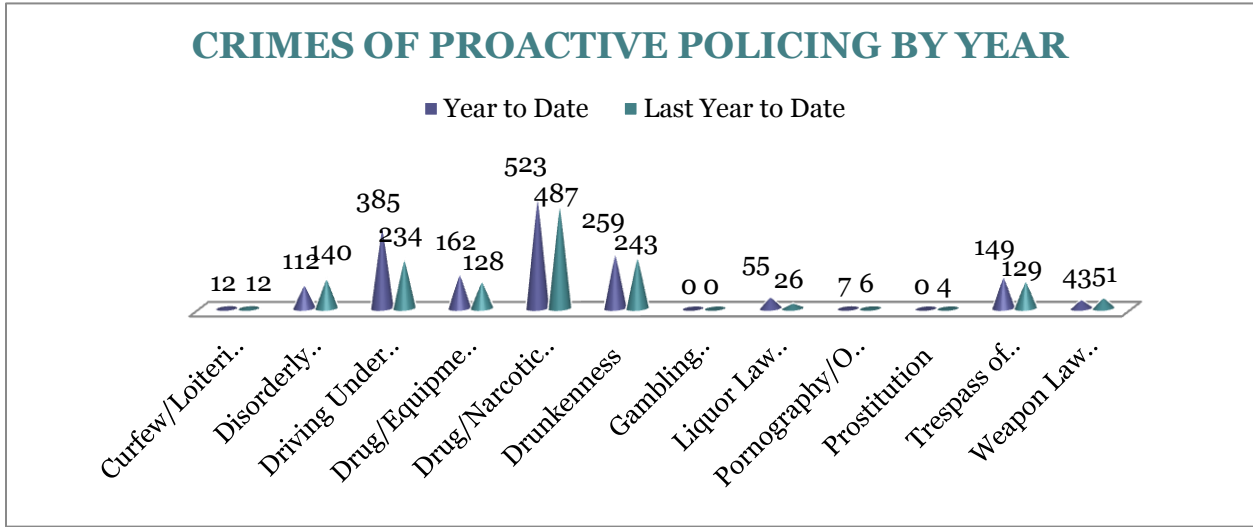


To date for the year 2012, there have been 1,707 crimes of proactive policing reported, a 17% increase, comparing to the last year's to date data. Driving Under the Influence is (up 65%), Liquor Law Violations

increased by 29 offences this year. Weapon Law Violations decreased by 16% this year. There are no statistically significant changes noted for other offenses in this category.

MONTHLY REPORT August 2012

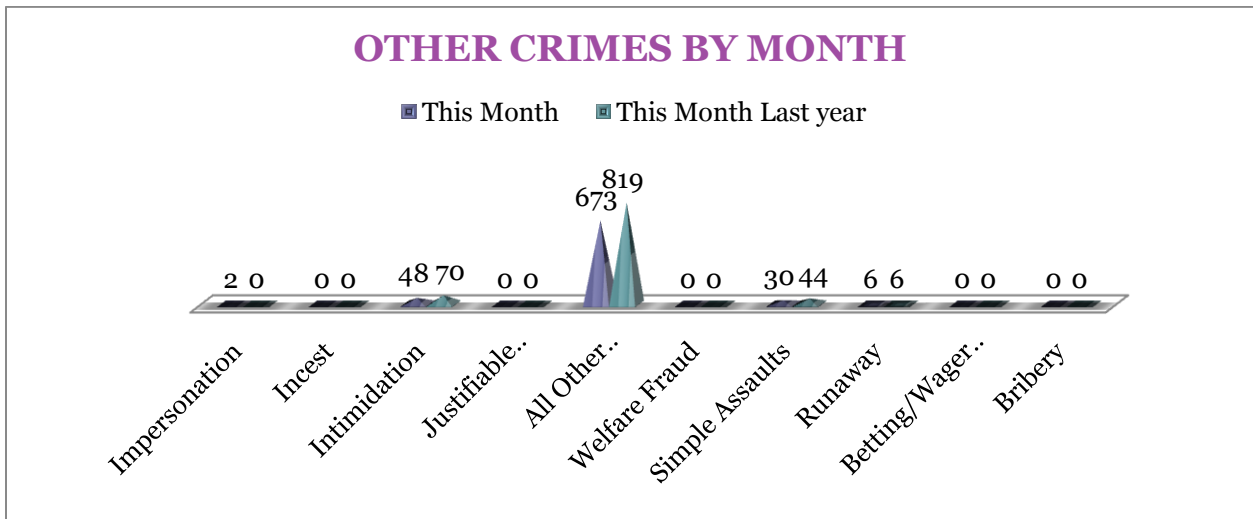
September 11, 2012



OTHER CRIMES

There are 10 crimes that fall into the Other Crimes category. This month, there have been a total of 760 Other Crimes, a 19% decrease, comparing to last August (n = 939). Intimidation is down 31% and Simple

Assaults are down 32%. Also all other offences are down 18%. No other significant changes are noted in this category of crimes this month.

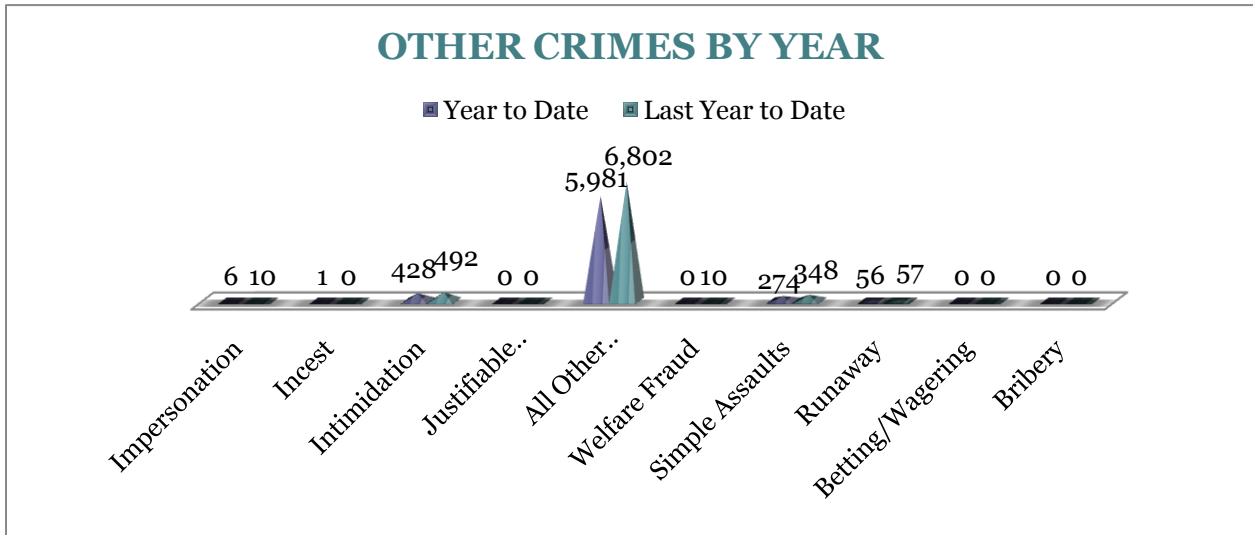


To date this year, there have been 6,747 Other Crimes offenses, a 13% decrease comparing to the last year's to date data. A notable change is observable for Simple Assaults that decreased by 21%. Impersonations are down 4 offences and

Welfare Fraud is down 10 Offences. No statistically significant changes have been observed for other offenses within this category, comparing to the last year's data.

MONTHLY REPORT August 2012

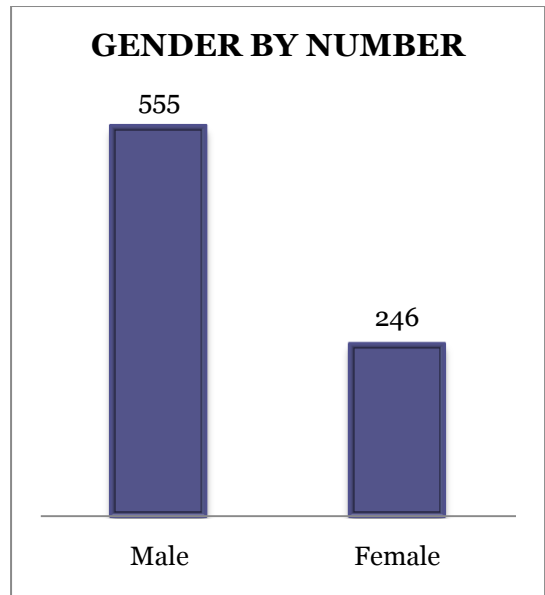
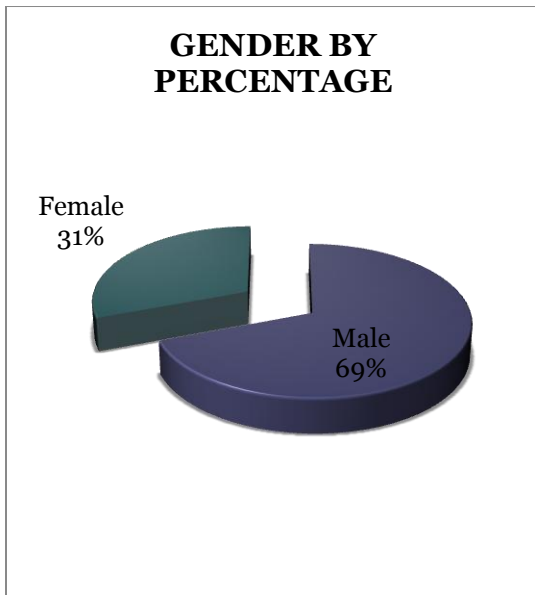
September 11, 2012



ARREST DEMOGRAPHICS

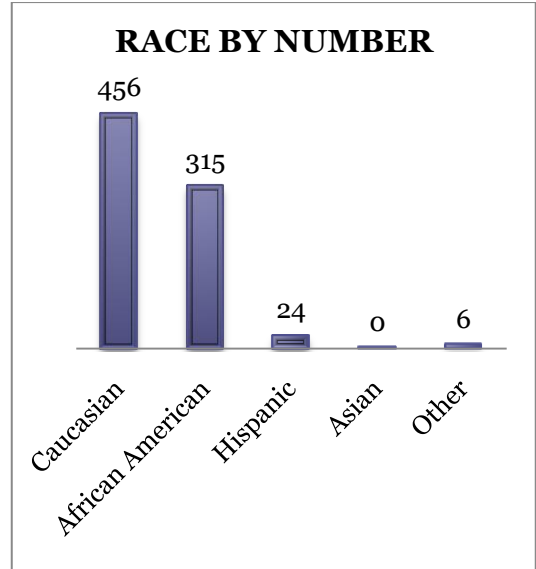
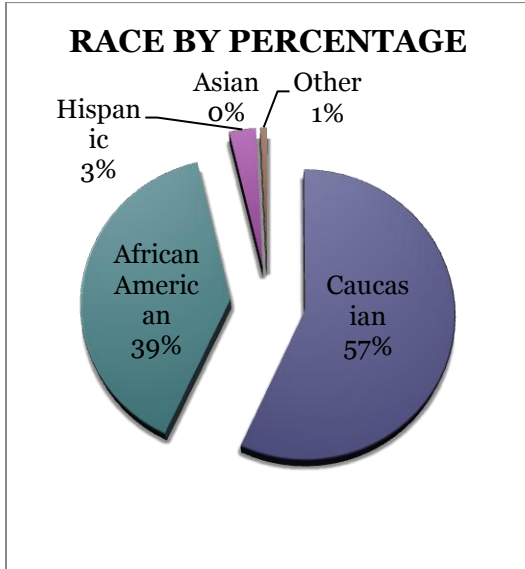
In August, there were a total of 801 arrests. Comparing with the last year's data for the month of August, there was a 12% decrease in arrests; that is 54 arrests per 100 crimes in August of this year, comparing to 53 arrests per 100 crimes last year, a 2.2% increase for arrests per 100 crimes. This section breaks down this

month's arrests by race and gender. The majority of offenders have been male ($n = 555$), as opposed to female ($n = 246$) and Caucasian ($n = 456$) and African American ($n = 315$) as opposed to Hispanic ($n = 24$), Asian ($n = 0$), or other/unknown/bi-racial ($n = 6$).



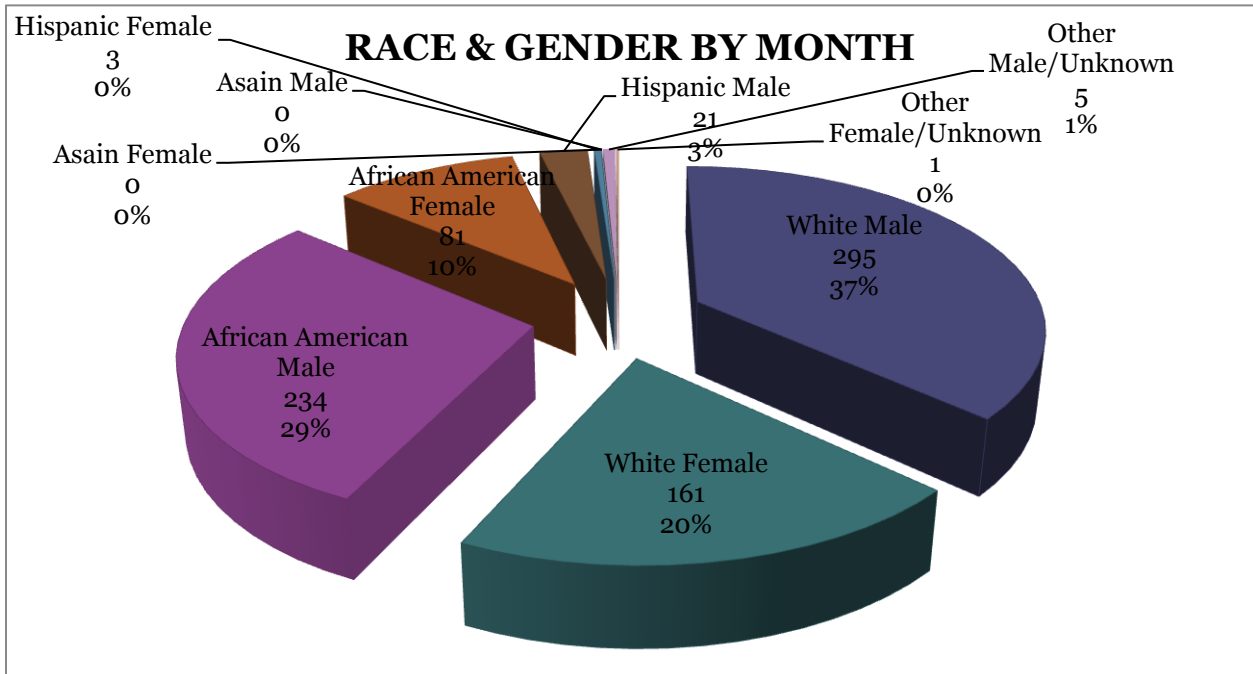
MONTHLY REPORT August 2012

September 11, 2012



Caucasian males make up the majority, 37%, of arrestees this month ($n = 295$). African American males make up 29% of arrestees for the month of August ($n = 234$). Caucasian females make up 20% ($n =$

161) and African American females make up 10% ($n = 81$). Hispanic males make up 3% ($n = 21$), and Hispanic Females make up 0% ($n = 3$) of arrestees.



MONTHLY REPORT August 2012

September 11, 2012

EMERGENCY 911

Also known as Public Safety Answering Point (PSAP), the Emergency 911 Division is responsible for answering all calls from public for emergency assistance, accessing the needed information to best assist, and then assigning the most efficient and effective emergency response. In addition,

this division is responsible for setting priority call dispatching to field units including Police, Fire, and EMS. Emergency 911 also maintains all records for radio logs, calls for service, and other emergency service data collections.

Calls by Type	This Month	This Month Last Year	YTD	Last YTD	Change By Month	Change YTD
Land Line E911	772	757	6,302	6,524	2%	-3%
Cell Phone E911	4,622	4,308	33,620	30,595	7%	10%
Admin Lines-non emer	16,830	12,318	136,891	128,151	37%	7%
TOTALS	22,224	17,383	176,813	165,270	28%	7%

Calls by Agency	This Month	This Month Last Year	YTD	Last YTD	Change By Month	Change YTD
Jonesboro PD Calls	6,861	7,110	55,787	54,410	-4%	3%
Craighead Cty Sheriff	1,441	1,301	10,308	9,970	11%	3%
Jonesboro Fire Dpt - dispatch	230	171	1,761	1,470	35%	20%
Jonesboro Fire Dpt - Med Asst	123	102	953	915	21%	4%
Craighead Cty - Fire	79	48	572	429	65%	33%
Craighead Cty - 1st Responder	115	102	876	704	13%	24%
Emerson Ambulance	335	245	2,439	1,990	37%	23%
Medic One	333	273	2,294	2,383	22%	-4%
Air Evac	2	1	7	7	100%	0%
Coroner	3	2	29	20	50%	45%
ARK State Police	9	11	113	113	-18%	0%
Jonesboro Animal Control	3	2	18	151	50%	-88%
Wreckers Called	173	159	1,353	1,227	9%	10%
TOTALS	9,707	9,527	76,510	73,789	2%	4%

Calls by Municipality	This Month	This Month Last Year	YTD	Last YTD	Change By Month	Change YTD
Bay PD	132	177	941	882	-25%	7%
Bono PD	297	282	2159	1541	5%	40%
Brookland PD	174	138	1348	1135	26%	19%
Caraway PD	128	90	1131	678	42%	67%
Cash PD	39	188	251	829	-79%	-70%
Egypt PD	12	18	65	93	-33%	-30%
Lake City PD	125	148	1207	803	-16%	50%
Monette PD	153	169	1183	1135	-9%	4%
TOTALS	1,060	1,210	8,285	7,096	-12%	17%

MONTHLY REPORT August 2012

September 11, 2012

UNIFORM PATROL DIVISION

The UPD is responsible for responding to calls into the Emergency - 911 Division by civilians and are normally the first responders. Jonesboro is divided into 6 patrol districts. Officers from UPD are assigned to a district and work the same

district every shift. In addition, when a Traffic Officer is not available, a UPD Officer will respond to traffic accidents and assist in directing traffic when necessary

Incidents	This Month	This Month Last Year	YTD	Last YTD	Change By Month	Change YTD
Calls for Service	6,861	7,113	56,417	53,030	-4%	6%
Complaints / Calls	4,367	4,388	32,340	33,095	0%	-2%
Assists	1,251	1,184	9,536	9,752	6%	-2%
Incident Reports	838	1,040	6,813	7,862	-19%	-13%
Street Accidents	99	77	615	664	29%	-7%
Private Property Accidents	25	48	325	352	-48%	-8%
Traffic Stops	1,900	1,797	16,296	16,576	6%	-2%
Traffic Citations	481	583	5,239	5,598	-17%	-6%
Written Warnings	796	691	6862	5,563	15%	23%
DWI	38	20	320	184	90%	74%
Mis. Arrests	448	544	3,706	4,043	-18%	-8%
Felony Arrests	105	87	746	748	21%	0%
Warrants Served	1,212	1,693	10,736	11,837	-28%	-9%
Alarms	369	406	2,735	2,664		
TOTALS	18,790	19,671	152,686	151,968	-4%	0%
Hours Worked	8,940	9,974	71,240	79,956	-10%	-11%

PROWL

The Prowl unit is a uniformed street crimes unit specializing in criminal patrol, narcotics enforcement, gang investigation, and prostitution activity. The unit conducts directed patrols, investigates citizen

complaints of street-level criminal activity, and directly assists the 2nd Judicial Drug Task Force. PROWL also assists any division within the Jonesboro Police Department at any time when needed.

MONTHLY REPORT August 2012

September 11, 2012

Incidents	This Month	This Month Last Year	YTD	Last YTD	Change By Month	Change YTD
Street Accidents	0	0	0	0	N/C	N/C
Private Property Accidents	0	0	1	0	N/C	N/C
Traffic Citations	24	23	267	258	4%	3%
DWI	0	0	1	0	N/C	N/C
Mis. Arrests	172	41	1,587	820	320%	94%
Felony Arrests	37	17	230	229	118%	0%
Drug Arrests	29	16	225	234	81%	-4%
Public Intoxication Arrests	0	0	1	0	N/C	N/C
Calls For Service	146	50	827	696	192%	19%
Alarms	0	0	0	0	N/C	N/C
Parking Citations	0	0	0	0	N/C	N/C
Written Warnings	64	42	469	361	52%	30%
Assists	0	0	0	0	N/C	N/C
TOTALS	472	189	3,608	2,598	150%	39%

Value of Drugs Seized	\$ 71,500	\$ 930	\$ 141,335	\$ 52,450	7588%	169%
Value of Asstes Seized	\$ 1,000	\$ 1,775	\$ 33,618	\$ 51,930	-44%	-35%
Patrol Miles	6,600	4,650	49,200	41,370	42%	19%

CRIMINAL INVESTIGATIVE DIVISION

The CID is responsible for conducting follow-up investigations into criminal acts reported to the Jonesboro Police Department. The primary goal is to collect and present evidence that conclusively

leads to a successful arrest. Additionally, CID is charged with clearing additional crimes, recovering stolen property, preventing additional crimes, and gathering intelligence information.

Investigations	This Month	This Month Last Year	YTD	Last YTD	Change By Month	Change YTD
Criminal Investigations Assigned	88	100	569	740	-12%	-23%
Criminal Investigations Closed	64	79	418	588	-19%	-29%
Cleared by Arrests	54	53	297	417	2%	-29%
Unfounded	3	9	42	54	-67%	-22%
Exceptionally Cleared	1	16	34	74	-94%	-54%
Filed With Prosecutors Office	2	2	35	27	0%	30%
TOTALS	212	259	1395	1900	-18%	-27%

Crimes Against Persons	This Month	This Month Last Year	YTD	Last YTD	Change By Month	Change YTD
Criminal Investigations Assigned	19	30	145	171	-37%	-15%
Criminal Investigations Closed	23	22	142	154	5%	-8%
Cleared by Arrests	23	15	109	112	53%	-3%
Unfounded	0	3	10	12	-100%	-17%
Execeptionally Cleared	0	3	9	24	-100%	-63%
Filed With Prosecutors Office	0	1	14	10	-100%	40%
TOTALS	65	74	429	483	-12%	-11%

MONTHLY REPORT August 2012

September 11, 2012

Property Crimes	This Month	This Month Last Year	YTD	Last YTD	Change By Month	Change YTD
Criminal Investigations Assigned	65	66	391	524	-2%	-25%
Criminal Investigations Closed	36	53	244	378	-32%	-35%
Cleared by Arrests	36	36	187	295	0%	-37%
Unfounded	2	4	27	35	-50%	-23%
Exceptionally Cleared	1	12	24	56	-92%	-57%
Filed With Prosecutors Office	2	1	13	10	100%	30%
TOTALS	142	172	886	1298	-17%	-32%

Crimes Against Children	This Month	This Month Last Year	YTD	Last YTD	Change By Month	Change YTD
Criminal Investigations Assigned	0	2	14	21	-100%	-33%
Criminal Investigations Closed	1	5	23	31	-80%	-26%
Cleared by Arrests	0	2	10	10	-100%	0%
Unfounded	1	2	6	14	-50%	-57%
Exceptionally Cleared	0	1	1	1	-100%	0%
Filed With Prosecutors Office	0	0	9	7	N/C	29%
TOTALS	2	12	63	84	-83%	-25%
Miscellaneous Investigations Assigned	4	0	7	4	N/C	75%
Miscellaneous Investigations Cleared	4	2	15	17	N/C	-12%

WARRANTS

The Warrants Division is responsible for serving warrants, criminal summonses, and subpoenas that are issued by the District Court. On city court days, the Warrants Division provides a bailiff for court and a transport officer. In addition, this Division

is responsible for transporting wanted persons arrested in other jurisdictions back to Jonesboro. The STEP program operates within this division and is a grant-funded operation in which officers can get paid overtime to enforce the safety belt law.

Arrests	This Month	This Month Last Year	YTD	Last YTD	Change By Month	Change YTD
Misdemeanor	1266	1091	8522	9232	16%	-8%
Felony	0	4	2	6	-100%	-67%
Total Arrests	1266	1095	8524	9238	16%	-8%

Warrants by Activity	This Month	This Month Last Year	YTD	Last YTD	Change By Month	Change YTD
Subpoenas	635	312	3160	2859	104%	11%
Commitments	3	3	20	17	0%	18%
Traffic Citations	2	3	17	17	-33%	0%
Complaints	1	0	8	2	N/C	300%
Assist	0	0	1	0	N/C	N/C
Alarms	0	0	0	0	N/C	N/C

MONTHLY REPORT August 2012

September 11, 2012

Hours by Activity	This Month	This Month Last Year	YTD	Last YTD	Change By Month	Change YTD
SI Criminal	264	251	1681.5	1865.5	5%	-10%
Court	141.67	145	966.67	956.33	-2%	1%
Prisoner Transport	26	32	233	125.5	-19%	86%

Hours Worked	This Month	This Month Last Year	YTD	Last YTD	Change By Month	Change YTD
Regular Hours Worked	668	623	6497	5036.5	7%	29%
Overtime Hours Worked	11	11	57	79.5	0%	-28%
TOTAL Hours Worked	679	634	6554	5116	7%	28%

Mileage	This Month	This Month Last Year	YTD	Last YTD	Change By Month	Change YTD
Total Mileage	3209	2180	21507	21212	47%	1%

STEP	This Month	This Month Last Year	YTD	Last YTD	Change By Month	Change YTD
DWI Arrest	0	1	7	5	-100%	40%
DUI Arrest	0	0	0	0	N/C	N/C
Traffic Citations	26	290	1609	1321	-91%	22%
Felony Arrests	0	0	6	4	N/C	50%
Drug Arrests	0	0	1	1	N/C	0%
STEP TOTALS	26	291	1623	1331	-91%	22%

STEP Hours Worked	7	211.5	1042.5	682.5	-97%	53%
STEP Miles Driven	90	1079	5332.5	5762	-92%	-7%

DRUG TASK FORCE

The DTF is responsible for investigating major drug traffickers in the area, including all types of illegal drugs. They

work closely with local, state, and federal agencies to eradicate drugs from the community.

INVESTIGATIONS	This Month	This Month Last Year	YTD	Last YTD	Change By Month	Change YTD
Opened	28	16	200	197	75%	2%
Closed	17	14	154	194	21%	-21%
TOTAL	45	30	354	391	50%	-9%

With Nexus to Jonesboro	This Month	This Month Last Year	YTD	Last YTD	Change By Month	Change YTD
Opened	20	15	183	203	33%	-10%
Closed				0	N/C	N/C
TOTAL	20	15	183	203	33%	-10%

Outside Jonesboro (No Known Nexus)	This Month	This Month Last Year	YTD	Last YTD	Change By Month	Change YTD
Opened	3	0	11	13	1300%	-15%
Closed	0	0		0	0%	N/C
TOTAL	3	0	11	13	N/C	-15%

ASSISTANCE RENDERED	This Month	This Month Last Year	YTD	Last YTD	Change By Month	Change YTD
Assist to Outside Agencies	2	1	58	103	100%	-44%
Assist to Jonesboro UPD/CID	3	10	93	99	-70%	-6%

MONTHLY REPORT August 2012

September 11, 2012

ARRESTS	This Month	This Month Last Year	YTD	Last YTD	Change By Month	Change YTD
Miscellaneous	3	4	52	60	-25%	-13%
Felony	30	23	207	215	30%	-4%
Marijuana	4	2	29	60	100%	-52%
Cocaine	0	1	13	11	-100%	18%
Crack Cocaine	1	1	20	17	0%	18%
Methamphetamine/ICE	4	3	58	77	33%	-25%
LSD	0	0	0	0	N/C	N/C
Ecstasy (MDMA or Other Designer Drug)	0	0	0	0	N/C	N/C
Prescription	7	1	19	18	600%	6%
Opiates (Heroine, Opium)	0	0	1	1	N/C	0%
Labs	0	0	5	16	N/C	-69%
All Other Drug Offenses	5	0	28	0	N/C	N/C

ASSET FORFEITURE	This Month	This Month Last Year	YTD	Last YTD	Change By Month	Change YTD
Vehicles Seized (No.)	1	0	1	2	N/C	-50%
Value of Assets Seized(Includes Value of vehicles)	\$25,452	\$9,380	\$49,178	\$48,485	171%	1%
Asset Value Awarded to Jonesboro PD (State)		\$0	\$0	\$0	N/C	N/C
Asset Value Awarded to Jonesboro PD (Federal)		\$0	\$0	\$0	N/C	N/C
Asset Value Awarded to Jonesboro PD (Total)		\$0	\$0	\$0	N/C	N/C

ARRESTS DEMOGRAPHICS	This Month	This Month Last Year	YTD	Last YTD	Change By Month	Change YTD
White	6	6	84	130	0%	-35%
African American	11	9	63	74	22%	-15%
Latino	0	2	16	7	-100%	129%
Asian	0	0	0	0	N/C	N/C
Other/Bi-Racial	0	0	0	0	N/C	N/C
Male	10	11	113	159	-9%	-29%
Female	5	6	48	49	-17%	-2%
White Male	2	2	48	86	0%	-44%
White Female	4	4	33	40	0%	-18%
African American Male	9	7	50	65	29%	-23%
African American Female	2	2	12	7	0%	71%
Latino Male	0	2	13	7	-100%	86%
Latino Female	0	0	1	0	N/C	N/C
Asian Male	0	0	0	0	N/C	N/C
Asian Female	0	0	0	0	N/C	N/C
Other/Bi-Racial Male	0	0	0	0	N/C	N/C
Other/Bi-Racial Female	0	0	0	0	N/C	N/C

TRAFFIC

Comprised of three motor units and three Chargers, the Traffic Enforcement Unit responds to traffic accidents and provides increased enforcement in particularly challenging areas. This unit also provides

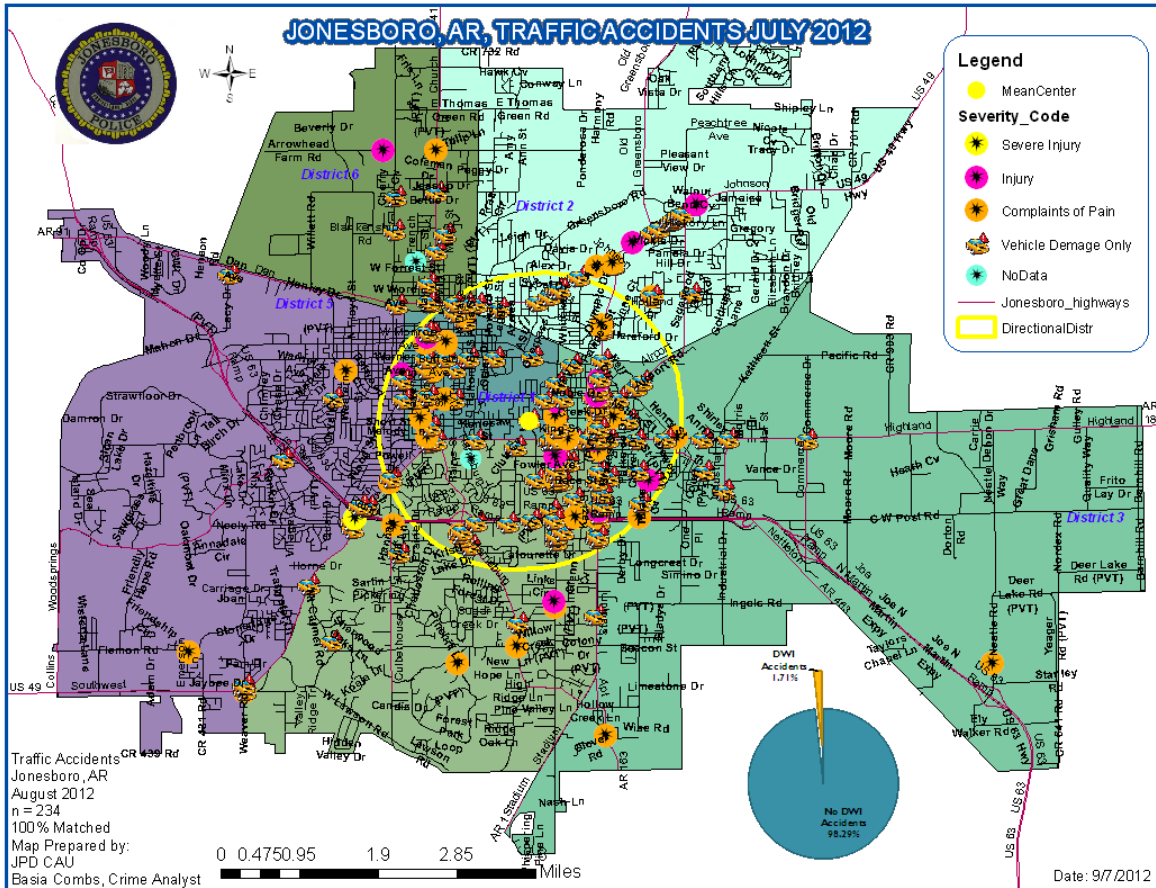
extra coverage for specific congestion problems and special events in the community. Last, they work details targeting specific issues, such as DWI enforcement and traffic safety checkpoints.

MONTHLY REPORT August 2012

September 11, 2012

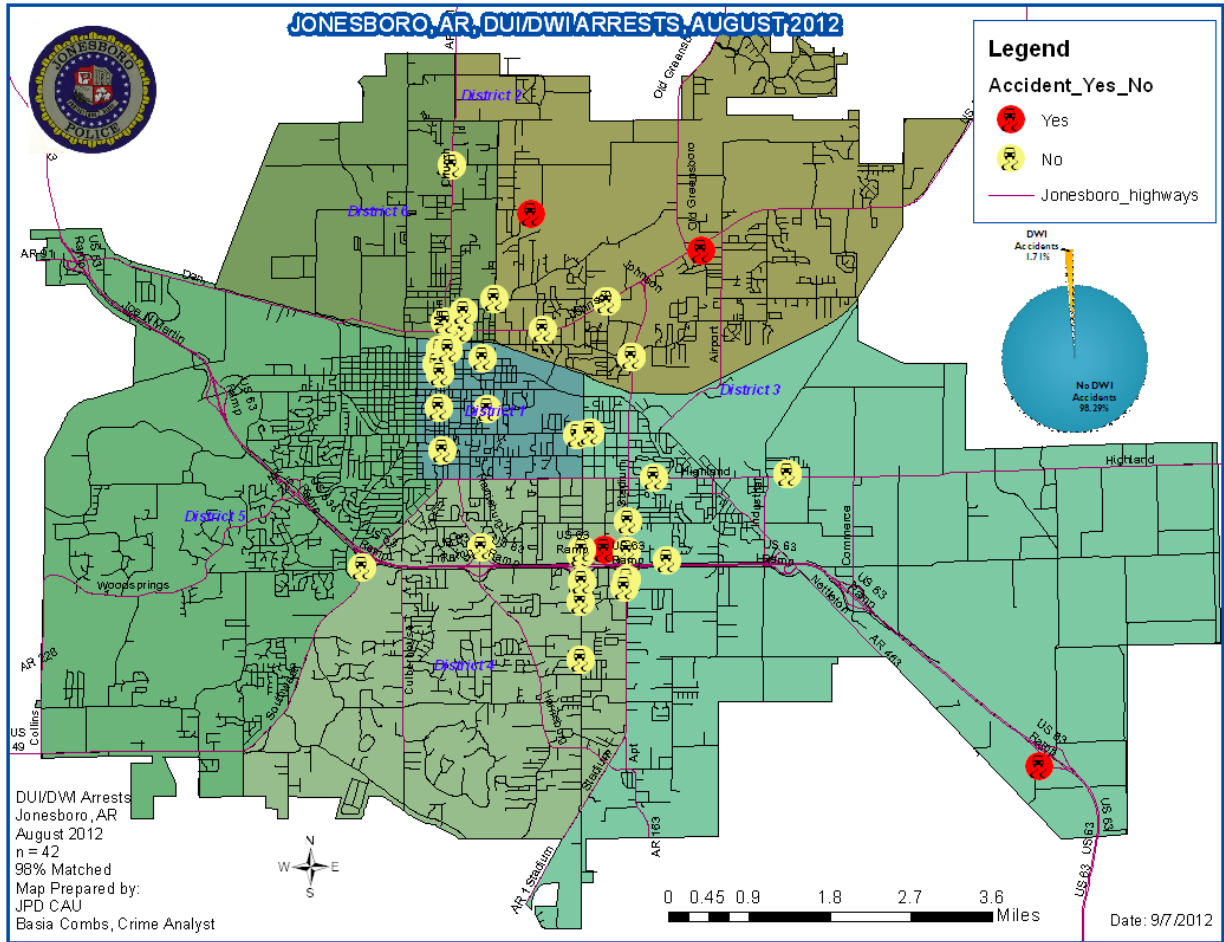
Incidents	This Month	This Month Last Year	YTD	Last YTD	Change By Month	Change YTD
Street Accidents	148	126	1072	1024	17%	5%
Private Property Accidents	38	39	295	304	-3%	-3%
Traffic Citations	106	196	1072	1980	-46%	-46%
DWI	1	6	24	25	-83%	-4%
Mis. Arrests	5	8	108	134	-38%	-19%
Felony Arrests	0	1	2	22	-100%	-91%
Drug Arrests	0	0	0	0	N/C	N/C
Public Intoxication Arrests	0	0	0	2	N/C	-100%
Calls For Service	250	299	1950	2142	-16%	-9%
Alarms	0	0	0	11	N/C	-100%
Parking Citations	0	0	0	0	N/C	N/C
Written Warnings	59	116	861	888	-49%	-3%
TOTALS	607	791	5384	6532	-23%	-18%

Value of Asstes Seized	\$0	\$0	\$0	\$0	N/C	N/C
Patrol Miles	5,246	5,107	47,206	43,402	3%	9%
Hours Worked	879	889	6724.5	6356	-1%	6%



MONTHLY REPORT August 2012

September 11, 2012



PARKING ENFORCEMENT

The Parking Enforcement Division is responsible for enforcing parking laws in the downtown area. This service provides a

safe and convenient parking situation for the public.

CITATIONS ISSUED	This Month	This Month Last Year	YTD	Last YTD	Change By Month	Change YTD
Citations	45	41	256	288	10%	-11%
Verbal Warnings	25	14	127	64	N/C	N/C

MINUTES BY ACTIVITY	This Month	This Month Last Year	YTD	Last YTD	Change By Month	Change YTD
Office	820	825	2,405	4,580	-1%	-47%
Admin(Non-Office)	0	695	2,515	5,610	-100%	-55%
Community	0	0	0	0	N/C	N/C
Training	0	0	0	115	N/C	-100%
Patrol	6,560	7,360	40,865	44,640	-11%	-8%

MONTHLY REPORT August 2012

September 11, 2012

ANIMAL CONTROL

The Animal Control Division is responsible for educating the public on safe and humane issues regarding animal treatment, enforcing all animal laws and ordinances, assisting the public in resolving animal

issues, and protecting the safety and welfare of the citizens and animals in this community.

Incidents	This Month 04/12	This Month Last Year	YTD 2012	Last YTD 2011	Change By Month	Change YTD
Barking Complaints	1	2	58	93	-50%	-38%
Bite Reports	7	5	64	87	40%	-26%
Door Hangers	27	29	325	248	-7%	31%
Welfare Checks	57	100	687	777	-43%	-12%
Advised of Rights	1156	771	6833	4484	50%	52%
Incident Reports	1	8	44	36	-88%	22%
Gone on Arrival	55	60	453	224	-8%	102%
Complaints	910	610	6112	4482	49%	36%
Desk Complaints	1527	1970	11727	11563	-22%	1%
Captured Dogs	156	148	1059	994	5%	7%
Captured Cats	14	9	82	178	56%	-54%
Captured Wildlife	52	33	292	178	58%	64%
Chemical Captures	4	2	24	22	100%	9%
Traps	54	19	325	84	184%	287%
Deceased Animals	60	55	653	456	9%	43%
Assist J.P.D.	9	12	52	69	-25%	-25%
Assist C.S.O.	0	0	3	10	N/C	-70%
Public Relations	275	952	4479	5536	-71%	-19%
CITATIONS ISSUED	25	51	384	820	-51%	-53%
WARNINGS ISSUED	19	71	268	469	-73%	-43%

Incidents	This Month 04/12	This Month Last Year	YTD 2012	Last YTD 2011	Change By Month	Change YTD
Physical Arrests	0	4	10	33	-100%	-70%
City Warrants Served	2	9	39	193	-78%	-80%
County Warrants Served	0	8	14	22	-100%	-36%
Felony Bench Warrants	0	1	2	4	-100%	-50%
Euthanized	76	124	588	531	-39%	11%
Deceased Animals Landfill lbs.	2480	5380	26556	26420	-54%	1%
Wildlife Euthanized	52	33	282	178	58%	58%
Sent to Rescue Centers	3	2	54	19	50%	184%
Adoptions	47	48	373	294	-2%	27%
Miles Driven	8,331	7649	57,870	50,409	9%	15%

** Above numbers are based on work performed by 4 officers*

FLEET MAINTNANCE

The Fleet Maintenance is responsible for all of the police vehicle maintenance upkeep, cleanliness, and purchasing. In addition,

this Division handles most of the purchasing of equipment, supplies, and uniforms for all of the Police Department.

MONTHLY REPORT August 2012

September 11, 2012

Repair Costs by Model Year	This Month	This Month Last Year	YTD	Last YTD	Change By Month	Change YTD
95-99	\$0.00	\$0.00	\$0.00	\$0.00	N/C	N/C
2000	\$115.09	\$133.48	\$115.09	\$292.92	-14%	-61%
2001	\$0.00	\$201.41	\$300.46	\$213.02	-100%	41%
2002	\$0.00	\$0.00	\$0.00	\$405.65	N/C	-100%
2003	\$0.00	\$0.00	\$0.00	\$0.00	N/C	N/C
2004	\$408.49	\$235.92	\$1,822.92	\$1,531.66	73%	19%
2005	\$288.35	\$79.40	\$1,000.39	\$7,339.39	263%	-86%
2006	\$2,315.89	\$5,011.16	\$28,193.29	\$25,967.63	-54%	9%
2007	\$1,446.38	\$2,226.18	\$9,635.32	\$12,073.56	-35%	-20%
2008	\$1,442.22	\$323.04	\$3,558.94	\$1,678.18	346%	112%
2009	\$252.56	\$390.51	\$1,892.89	\$650.03	N/C	N/C
2010	\$11.61	\$0.00	\$512.50	\$433.45	N/C	N/C
2011	\$190.92	\$46.44	\$1,143.80	\$58.05	N/C	N/C
2012	\$0.00	n/a	\$0.00		N/C	N/C
Totals	\$6,471.51	\$8,647.54	\$48,175.60	\$50,643.54	-25%	-5%

Routine Preventative Maintenance by Model Year	This Month	This Month Last Year	YTD	Last YTD	Change By Month	Change YTD
95-99	\$0.00	\$78.00	\$72.00	\$78.00	-100%	-8%
2000	\$0.00	\$0.00	\$20.00	\$40.00	N/C	-50%
2001	\$0.00	\$0.00	\$0.00	\$68.00	N/C	-100%
2002	\$0.00	\$0.00	\$100.46	\$50.30	N/C	100%
2003	\$104.50	\$29.00	\$276.50	\$98.00	260%	182%
2004	\$20.00	\$20.00	\$315.45	\$1,485.51	0%	-79%
2005	\$455.89	\$928.58	\$1,105.24	\$3,909.26	-51%	-72%
2006	\$1,373.21	\$1,427.08	\$12,000.31	\$12,212.18	-4%	-2%
2007	\$495.00	\$449.20	\$7,297.78	\$7,549.33	10%	-3%
2008	\$981.53	\$624.39	\$3,368.59	\$2,304.58	57%	46%
2009	\$895.12	\$601.29	\$6,474.54	\$2,910.72	N/C	N/C
2010	\$65.00	\$0.00	\$1,957.99	\$1,455.98	N/C	N/C
2011	\$382.00	\$60.00	\$1,595.50	\$160.00	N/C	N/C
2012	\$50.00	n/a	\$422.81	n/a	N/C	N/C
Totals	\$4,822.25	\$4,217.54	\$35,007.17	\$32,321.86	14%	8%

RECORDS

The Records Division is responsible for providing administrative and clerical support to the department. Major responsibilities include entering the accident and incident reports and tickets into the records database management

system, assisting the general public for report requests, performing criminal backgrounds, serving as a switchboard at times, performing validations, and setting up and managing the payment plans out of court.

MONTHLY REPORT August 2012

September 11, 2012

RECORDS	This Month	This Month Last Year	YTD	Last YTD	Change By Month	Change YTD
Incident/Arrest Reports Processed	1189	1416	10022	10701	-16%	-6%
Accident Reports Processed	234	208	1638	1613	13%	2%
Citations Processed	3615	4337	33379	35703	-17%	-7%
Warnings Processed	806	722	6912	5009	12%	38%
Backgrounds	43	21	144	150	105%	-4%
Fingerprints	125	95	926	780	32%	19%
Photos	4	1	8	17	300%	-53%
Accident Requests	97	92	954	778	5%	23%
Accident Requests Online	139	174	886	1281	-20%	-31%
TOTALS	6,252	7,066	54,869	56,032	-12%	-2%

PROFESSIONAL STANDARDS

The Office of Professional Standards, a unit within Administration, is charged with the compilation and updating of an extensive set of policies and procedures and providing a general operations guideline and code of conduct for officers to follow.

In the event that a member of the public does experience a negative interaction with an officer, mechanisms are in place for them to lodge a complaint. All complaints are reviewed and investigations completed in a timely manner. (See next page for details)

Professional Standards	This Month	This Month Last Year	YTD	Last YTD	Change By Month	Change YTD
Opened (TOTAL)	4	9	50	34	-56%	47%
Closed	6	9	50	32	-33%	56%
Inquiries	4	6	44	26	-33%	69%
Formal Investigations	0	3	6	9	-100%	-33%
Sustained	5	8	38	27	-38%	41%
Not-Sustained	0	1	1	2	-100%	-50%
Exonerated	2	0	4	0	N/C	N/C
Unfounded	0	0	8	3	N/C	167%

END OF REPORT