

JONESBORO POLICE DEPARTMENT

Monthly Report

April 2012

Office of Crime Analysis & Criminal Intelligence
410 W Washington Ave
Jonesboro, AR 72401
Basia Combs, Crime Analyst

IN THIS REPORT

CRIME ANALYSIS	1
Total Crime	2
Crimes against Person	3
Property Crimes	4
Crimes of Proactive Policing	5
Other Crimes.....	6
Arrest Demographics	7
EMERGENCY 911	9
UPD	10
PROWL	10
CID	11
WARRANTS	12
DRUG TASK FORCE	13
TRAFFIC	14
Maps	15
PARKING ENFORCEMENT	16
ANIMAL CONTROL	17
FLEET MAINTENANCE	17
RECORDS	18
PROFESSIONAL STANDARDS	19

The purpose of the Jonesboro Police Department Monthly Report is to compile data into one integrated report for review, allowing for a seamless flow of information for better decision-making. After each department collates their monthly numbers and sends it to the Office of Crime Analysis, it is organized into sections of departmental data, analyzed and packaged, and finally disseminated to department heads, the Chief of Police, the City Mayor, and the City Council. Major sections include Crime Analysis, Emergency 911, Uniform Police Division, Prowl, Criminal Investigative Division, Warrants, Drug Task Force, Traffic, Parking Enforcement, Animal Control, Fleet Maintenance, Records, and Professional Standards.

CRIME ANALYSIS

The Crime Analysis division consists of one Crime Analyst and one part-time Crime Analyst Assistant. The Crime Analyst position is responsible for the analysis and dissemination of crime activity data and the collection and maintenance of crime intelligence information for the city of Jonesboro. Additionally, the Crime Analyst is charged with providing the department with current and accurate crime maps, presenting crime activity data to audiences of interest, and responding to requests for crime data from civilians and departmental staff. Data exported from this division is used by field agents for more effective, efficient policing, administration for improved staffing decisions, and the Mayor's office for community decision making and enhanced public relations. The following section is broken down into Total Crime, Crimes against Persons, Property Crimes, Crimes of Proactive Policing, Other Crimes, Arrest Demographics, Total Crime Monthly Comparison, and Next Month Predictions.

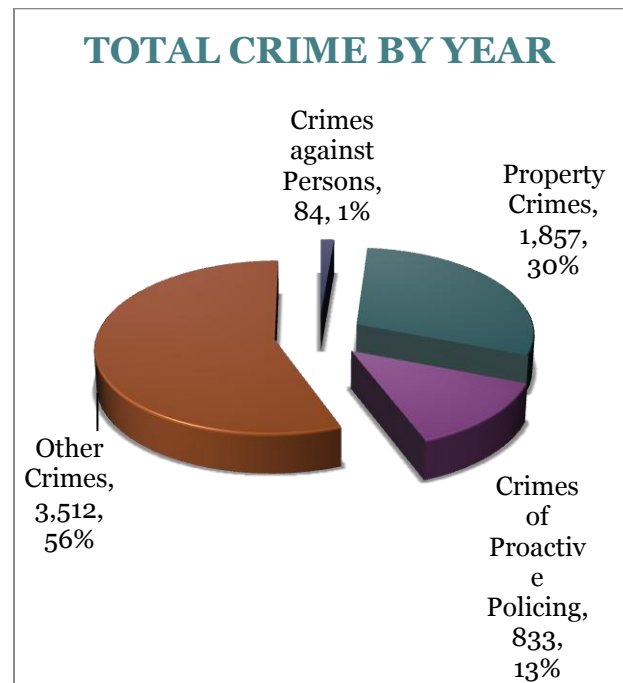
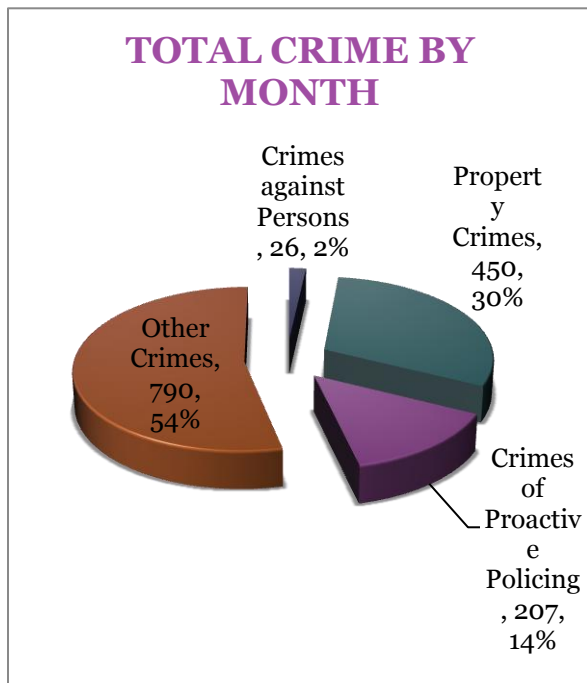
MONTHLY REPORT APRIL 2012

May 10, 2012

TOTAL CRIME

The crime activity for the month of April 2012 was at a total of 1,473 NIBRIS reportable offenses, a 15% decrease, comparing to a total of offenses in April last year. With Jonesboro population equal to 67,351, the crime rate was at 22 crimes per 1,000 population for the month of April this year, comparing to 26 crimes per 1,000 population last year¹, a 15% decrease. As indicated on a pie chart below, Other Crimes absorb the majority, 54%, of this month's crime activity ($n = 790$). Property crimes fall into a second place and comprise of 30% of all the crimes ($n = 450$). Following in third and fourth places are crimes of proactive policing at 14% ($n = 207$) and crimes against persons at 2% ($n = 26$), respectively.

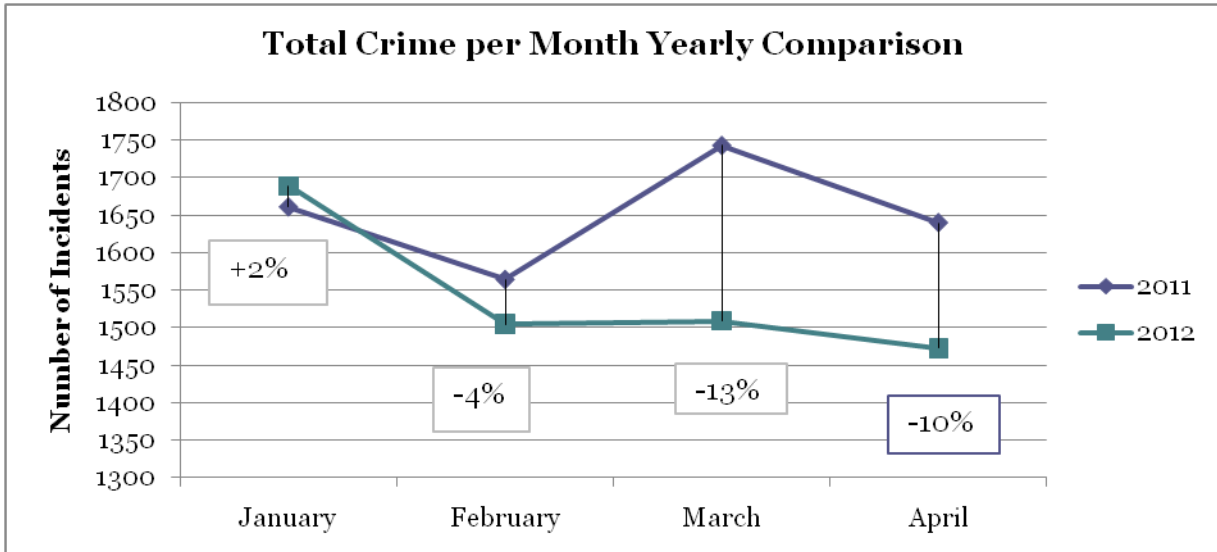
Year to date data includes number of crimes from January through April in 2012. A total of 6,286 NIBRIS reportable offenses were reported in 2012, a 6% decrease, comparing to the same period last year. The year to date crime rate is down 6% and amounts to 93 offenses per 1,000 population, compared to 100 offenses per 1,000 population last year. A 56% of the total crimes is attributed to Other Crimes category ($n = 3,512$). Property Crimes comprise of 30% of total crimes to date, where $n = 1,857$. Crimes of Proactive Policing amount to 13% ($n = 833$) and crimes against persons comprise of 1% of total year to date number of crimes ($n = 84$).



¹ Note: 2011 numbers are based on 2011 population estimate, $n = 67,263$.

MONTHLY REPORT APRIL 2012

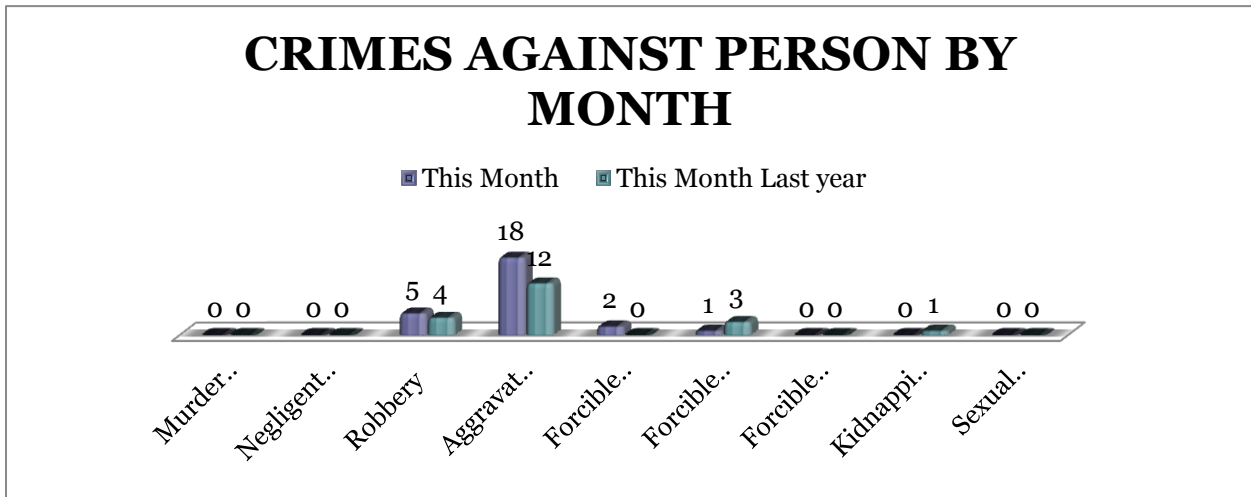
May 10, 2012



CRIMES AGAINST PERSONS

There are 9 crimes that make up this section. There were a total of 26 offenses in this area this month, up 30%, comparing to the last year's total in April. Aggravated Assaults are up 50%, robberies

are up 25% this month and rape decreased 67%. As demonstrated on the bar chart below, there are no significant changes in other crimes for this category.

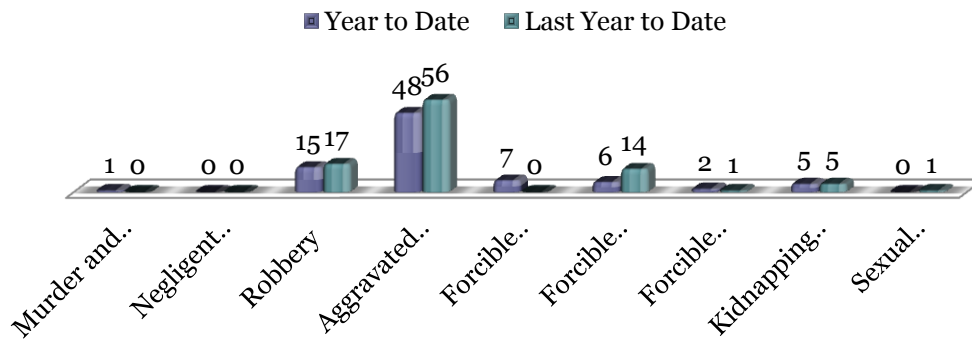


A bar graph on the following page shows the year to date data for Crimes against Persons, which amounts to a total of 84 incidents for this category of crimes, an

11% decrease, comparing to the year to date data of last year. Aggravated Assaults are down 14%, robberies are down 12%, and forcible rapes are down 57%.

May 10, 2012

CRIMES AGAINST PERSONS BY YEAR

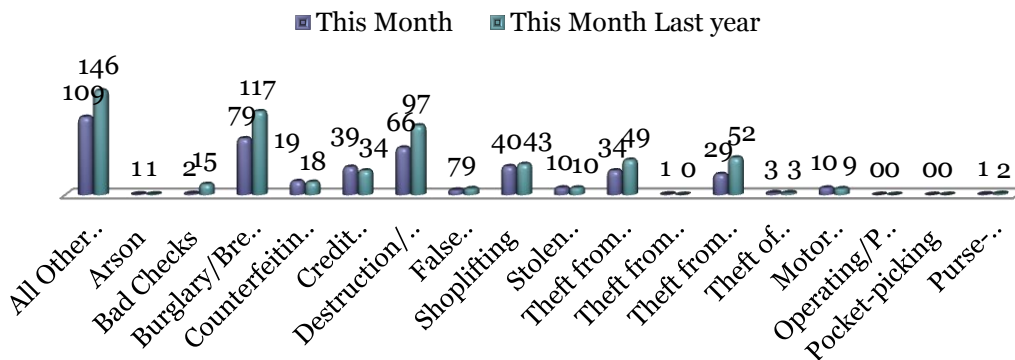


PROPERTY CRIMES

This section displays the criminal activity for 18 crimes, all against property. This month, there were a total of 450 Property Crimes, a 26% decrease comparing to April of the last year. The data indicates a significant change in Bad Checks (down 16

offences) and Burglary/Breaking and Entering (down 32%) and Theft from Motor Vehicle (down 44%). Credit Card/ATM Fraud increased by 15%.

PROPERTY CRIMES BY MONTH

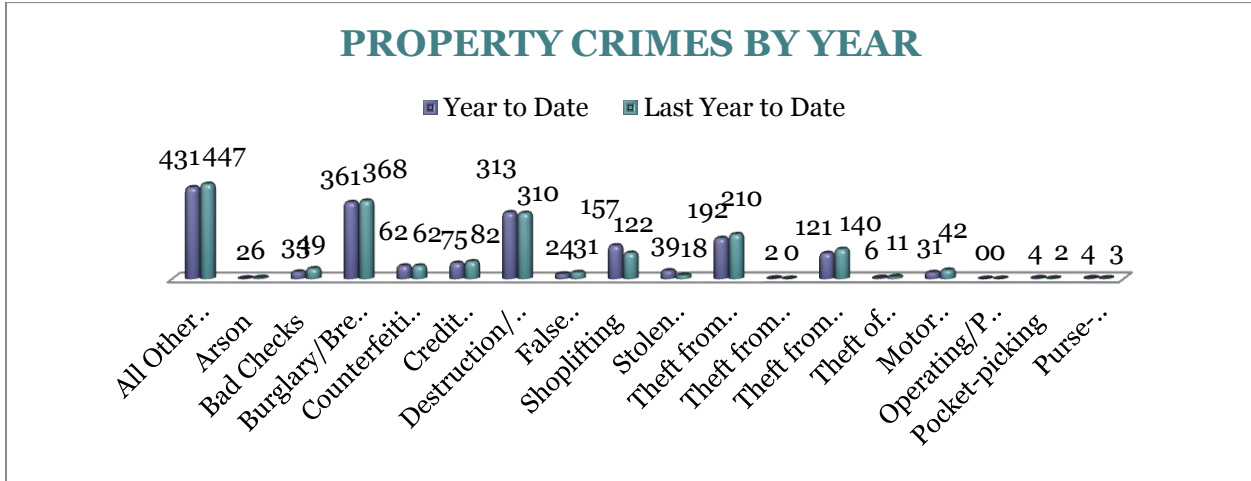


To date this year, 1,857 property offenses have occurred, a 2% decrease, comparing to the last year's data at this same time. The following significant changes are noted this year: Arson (down 4 offences),

Burglary/Breaking or Entering (down 2%), Motor Vehicle Theft (down 26%) Stolen Property Offenses increased by 21 offenses and Shoplifting increased by 29%.

MONTHLY REPORT APRIL 2012

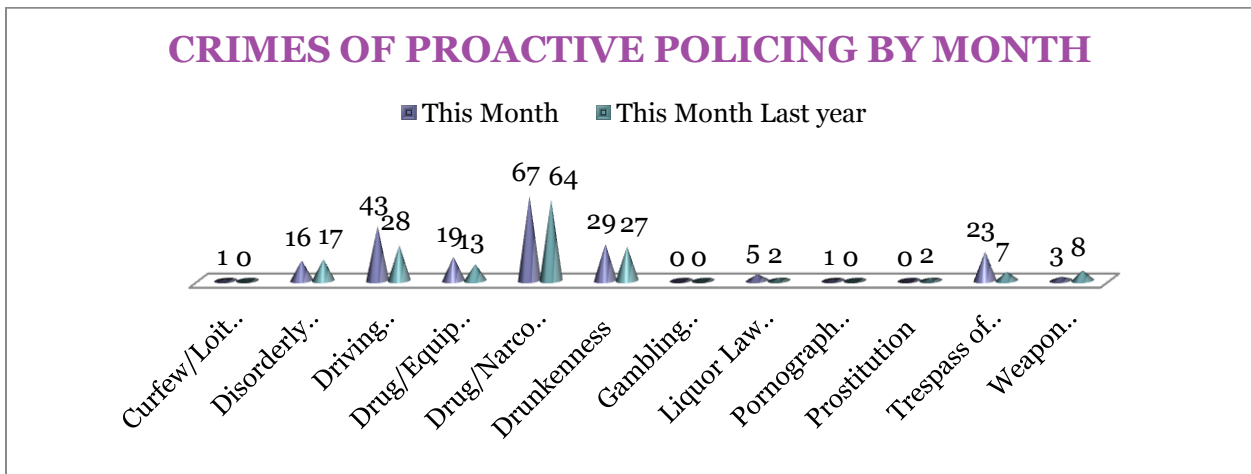
May 10, 2012



CRIMES OF PROACTIVE POLICING

Crimes of Proactive Policing are those crimes that result from police officers actively policing the streets to combat certain types of street crime. As a chart below indicates, twelve crimes fall under this category. A total of 207 offenses have occurred this month, a 23% increase,

comparing to April last year. There is a significant increase in Driving Under the Influence (up 54%), Drunkenness is up 7%, and there were 5 more Weapon Law Violations and 16 more Trespass of Real Property reported, comparing to April of the last year. Disorderly Conduct is down 6%.

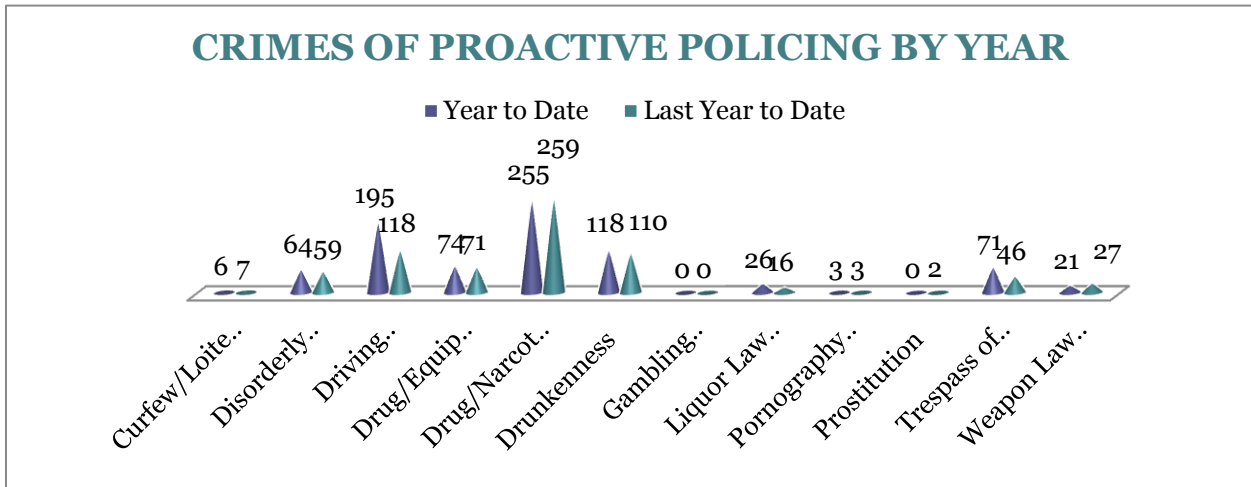


To date for the year 2012, there have been 833 crimes of proactive policing reported, a 16% increase, comparing to the last year's to date data. Driving Under the Influence is significantly higher than at the same time last year (up 65%), Liquor Law

Violations increased 63% this year, and Trespass of Real Property is up 54%. Weapon Law Violations decreased by 22% this year. There are no statistically significant changes noted for other offenses in this category.

MONTHLY REPORT APRIL 2012

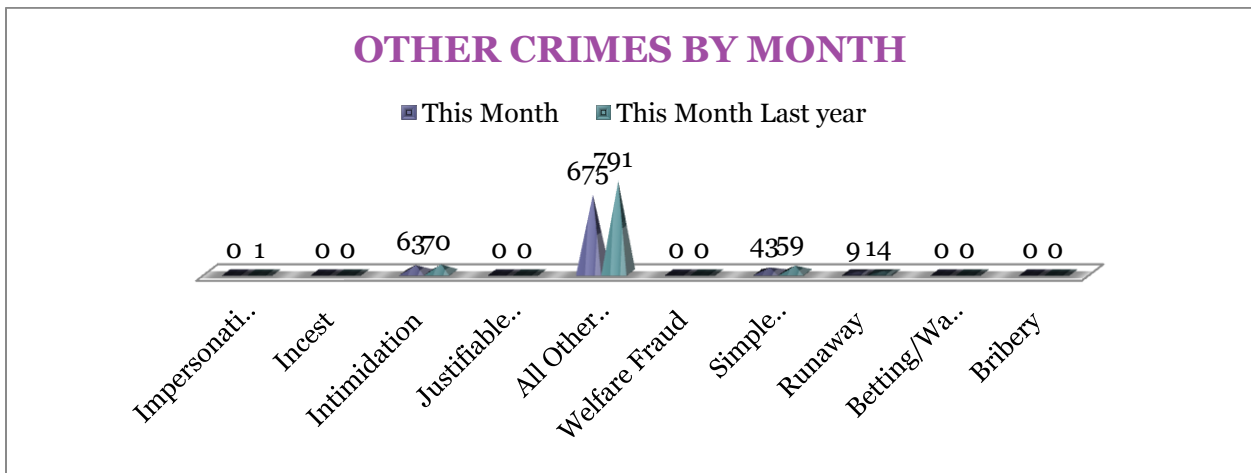
May 10, 2012



OTHER CRIMES

There are 10 crimes that fall into the Other Crimes category. This month, there have been a total of 790 Other Crimes, a 16% decrease, comparing to last April (n = 935).

Intimidation decreased by 10%. Simple Assaults are 27% down. No other significant changes are noted in this category of crimes this month.

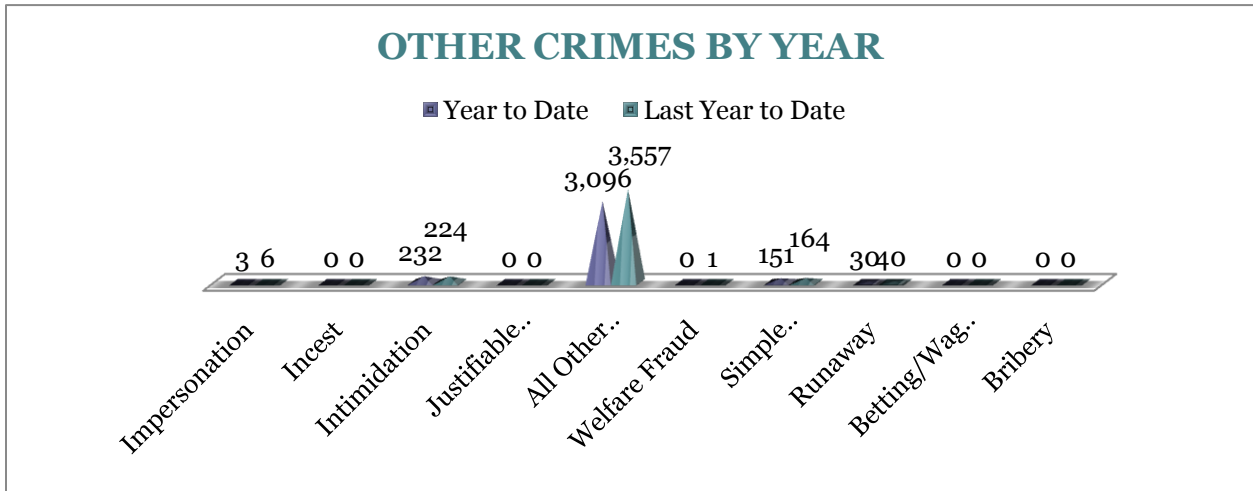


To date this year, there have been 3,512 Other Crimes offenses, a 12% decrease comparing to the last year's to date data. A notable change is observable for All Other Offenses that decreased by 13%,

while Intimidation is up 4%. No statistically significant changes have been observed for other offenses within this category, comparing to the last year's data.

MONTHLY REPORT APRIL 2012

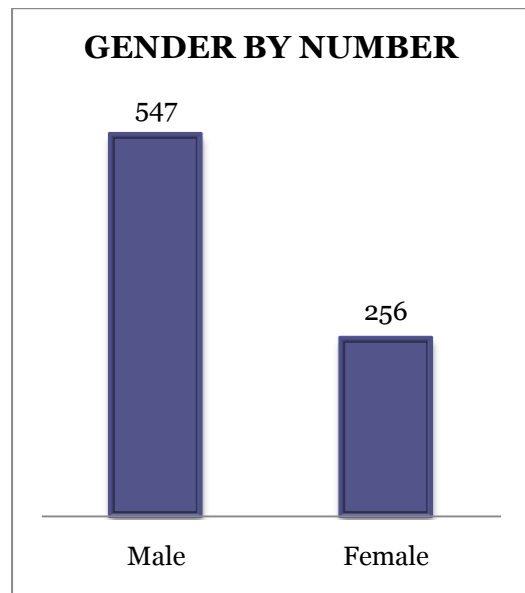
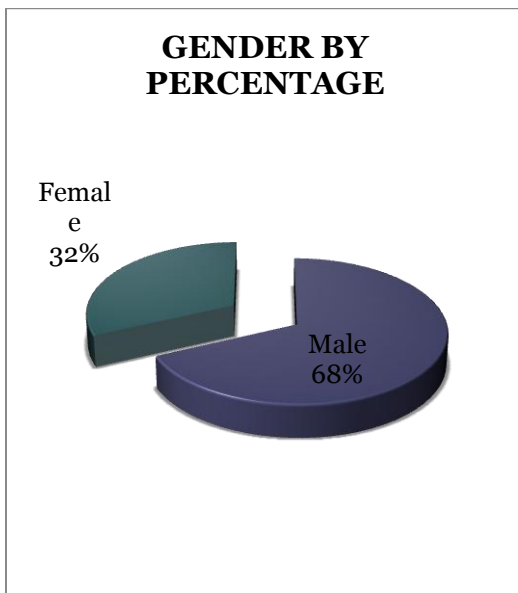
May 10, 2012



ARREST DEMOGRAPHICS

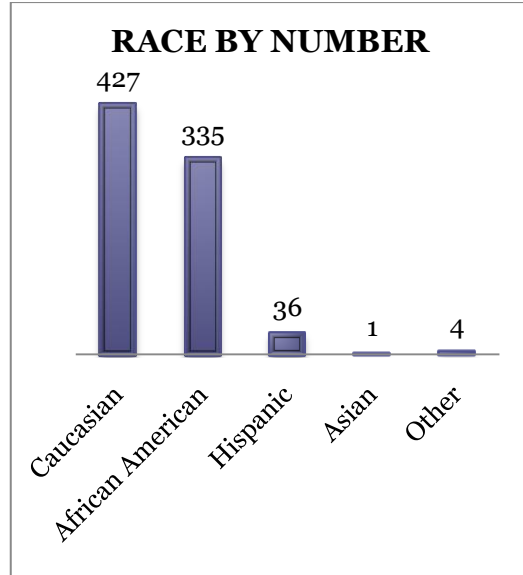
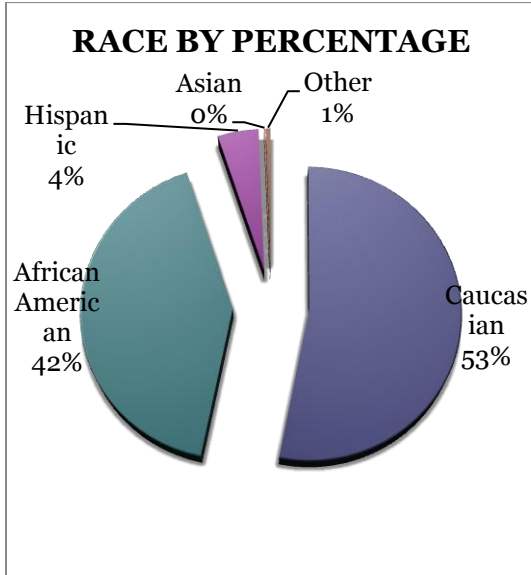
In April, there were a total of 803 arrests. Comparing with the last year's data for the month of April, there was a 5% decrease in arrests; that is 54 arrests per 100 crimes in April of this year, comparing to 49 arrests per 100 crimes last year, an 11% increase for arrests per 100 crimes. This section

breaks down this month's arrests by race and gender. The majority of offenders have been male ($n = 547$), as opposed to female ($n = 256$) and Caucasian ($n = 427$) and African American ($n = 335$) as opposed to Hispanic ($n = 36$), Asian ($n = 1$), or other/unknown/bi-racial ($n = 4$).



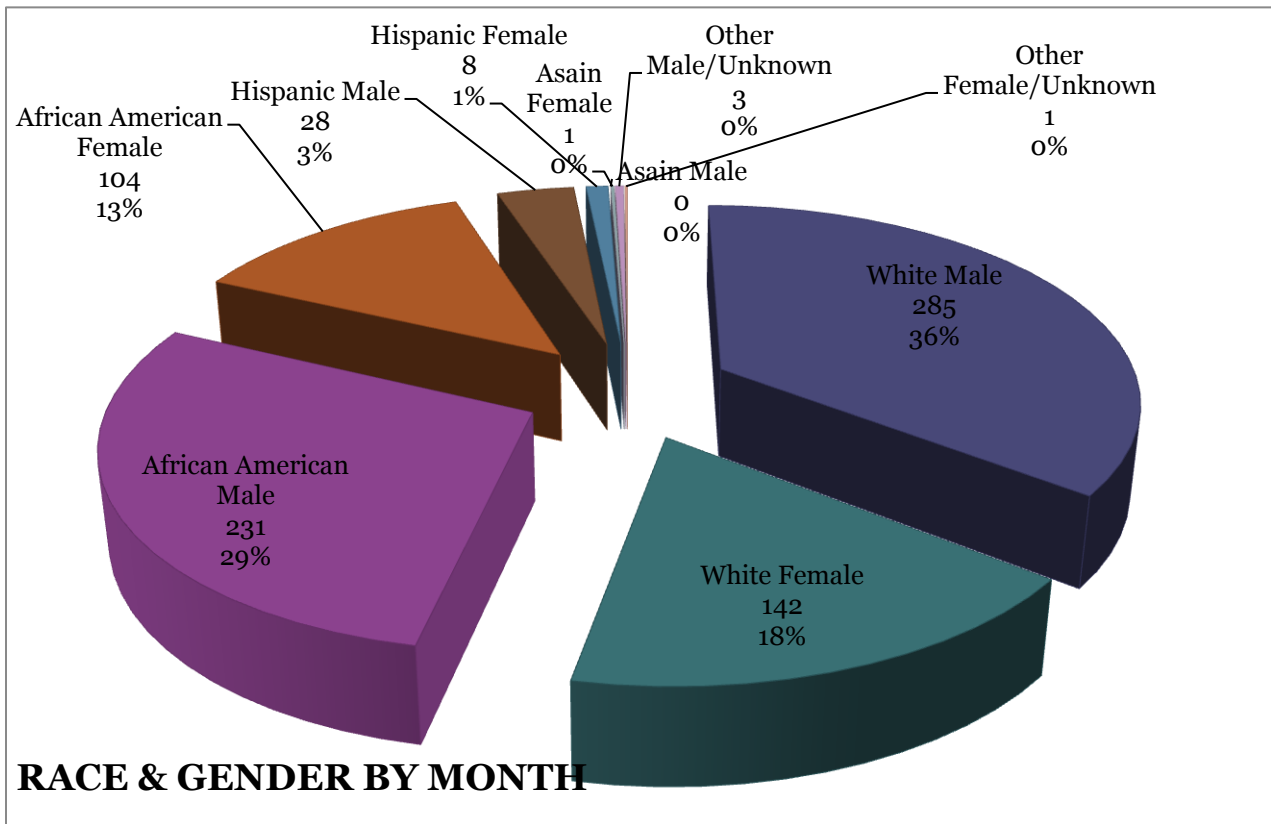
MONTHLY REPORT APRIL 2012

May 10, 2012



Caucasian males make up the majority, 36%, of arrestees this month ($n = 285$). African American males make up 29% of arrestees for the month of April ($n = 231$). Caucasian females make up 18% ($n = 142$)

and African American females make up 13% ($n = 104$). Hispanic males make up 3% ($n = 28$), and Hispanic Females make up 1% ($n = 8$) of arrestees.



MONTHLY REPORT APRIL 2012

May 10, 2012

EMERGENCY 911

Also known as Public Safety Answering Point (PSAP), the Emergency 911 Division is responsible for answering all calls from public for emergency assistance, accessing the needed information to best assist, and then assigning the most efficient and effective emergency response. In addition,

this division is responsible for setting priority call dispatching to field units including Police, Fire, and EMS. Emergency 911 also maintains all records for radio logs, calls for service, and other emergency service data collections.

Calls by Type	This Month	This Month Last Year	YTD	Last YTD	Change By Month	Change YTD
Land Line E911	775	911	3,053	3,140	-15%	-3%
Cell Phone E911	3,828	3,699	15,622	14,438	3%	8%
Admin Lines-non emer	15,678	17,156	69,740	63,377	-9%	10%
TOTALS	20,281	21,766	88,415	80,955	-7%	9%

Calls by Agency	This Month	This Month Last Year	YTD	Last YTD	Change By Month	Change YTD
Jonesboro PD Calls	6,752	7,089	27,539	25,693	-5%	7%
Craighead Cty Sheriff	1,160	1,199	5,038	4,903	-3%	3%
Jonesboro Fire Dpt - dispatch	232	203	849	763	14%	11%
Jonesboro Fire Dpt - Med Asst	126	124	457	467	2%	-2%
Craighead Cty - Fire	66	56	273	211	18%	29%
Craighead Cty - 1st Responder	113	83	419	323	36%	30%
Emerson Ambulance	373	236	1,188	923	58%	29%
Medic One	236	304	1,052	1,155	-22%	-9%
Air Evac	2	0	3	1	N/C	200%
Coroner	2	0	13	13	N/C	0%
ARK State Police	19	18	61	60	6%	2%
Jonesboro Animal Control	1	39	5	101	-97%	-95%
Wreckers Called	151	160	641	632	-6%	1%
TOTALS	9,233	9,511	37,538	35,245	-3%	7%

Calls by Municipality	This Month	This Month Last Year	YTD	Last YTD	Change By Month	Change YTD
Bay PD	70	104	462	336	-33%	38%
Bono PD	259	152	1048	526	70%	99%
Brookland PD	133	127	738	594	5%	24%
Caraway PD	127	92	656	324	38%	102%
Cash PD	31	58	99	130	-47%	-24%
Egypt PD	8	3	35	36	167%	-3%
Lake City PD	158	112	697	276	41%	153%
Monette PD	147	134	669	483	10%	39%
TOTALS	933	782	4,404	2,705	19%	63%

MONTHLY REPORT APRIL 2012

May 10, 2012

UNIFORM PATROL DIVISION

The UPD is responsible for responding to calls into the Emergency - 911 Division by civilians and are normally the first responders. Jonesboro is divided into 6 patrol districts. Officers from UPD are assigned to a district and work the same

district every shift. In addition, when a Traffic Officer is not available, a UPD Officer will respond to traffic accidents and assist in directing traffic when necessary.

Incidents	This Month	This Month Last Year	YTD	Last YTD	Change By Month	Change YTD
Calls For Service	6,752	7,092	28,169	25,579	-5%	10%
Complaints	4,138	4,660	15,785	15,039	-11%	5%
Assists	1,256	1,163	4,793	5,522	8%	-13%
Incident Reports	897	984	3,378	3,599	-9%	-6%
Street Accidents	90	97	295	346	-7%	-15%
Private Property Accidents	59	49	191	170	20%	12%
Traffic Stops	1,679	1,732	8,547	9,051	-3%	-6%
Traffic Citations	626	722	2,760	2,974	-13%	-7%
Written Warnings	871	667	3570	2,921	31%	22%
DWI	31	22	164	98	41%	67%
Mis. Arrests	446	427	1,895	2,043	4%	-7%
Felony Arrests	79	68	354	356	16%	-1%
Warrants Served	1,237	1,589	5,369	5,804	-22%	-7%
Alarms	269	351	1,259	1,230		
TOTALS	18,430	19,623	76,529	74,732	-6%	2%
Hours Worked	9,035	10,102	36,162	43,166	-11%	-16%

PROWL

The Prowl unit is a uniformed street crimes unit specializing in criminal patrol, narcotics enforcement, gang investigation, and prostitution activity. The unit conducts directed patrols, investigates citizen

complaints of street-level criminal activity, and directly assists the 2nd Judicial Drug Task Force. PROWL also assists any division within the Jonesboro Police Department at any time when needed.

MONTHLY REPORT APRIL 2012

May 10, 2012

Incidents	This Month	This Month Last Year	YTD	Last YTD	Change By Month	Change YTD
Street Accidents	0	0	0	0	N/C	N/C
Private Property Accidents	1	0	1	0	N/C	N/C
Traffic Citations	49	17	121	144	188%	-16%
DWI	1	0	1	0	N/C	N/C
Mis. Arrests	372	89	720	406	318%	77%
Felony Arrests	33	41	111	127	-20%	-13%
Drug Arrests	34	38	120	135	-11%	-11%
Public Intoxication Arrests	1	0	1	0	N/C	N/C
Calls For Service	89	110	290	397	-19%	-27%
Alarms	0	0	0	0	N/C	N/C
Parking Citations	0	0	0	0	N/C	N/C
Written Warnings	35	24	164	194	46%	-15%
Assists	0	0	0	0	N/C	N/C
TOTALS	615	319	1,529	1,403	93%	9%
Value of Drugs Seized	\$3,180	\$11,100	\$39,265	\$39,590	-71%	-1%
Value of Asstes Seized	861	27,650	24,218	44,296	-97%	-45%
Patrol Miles	5,800	5,700	23,250	20,870	2%	11%

CRIMINAL INVESTIGATIVE DIVISION

The CID is responsible for conducting follow-up investigations into criminal acts reported to the Jonesboro Police Department. The primary goal is to collect and present evidence that conclusively

leads to a successful arrest. Additionally, CID is charged with clearing additional crimes, recovering stolen property, preventing additional crimes, and gathering intelligence information.

Investigations	This Month	This Month Last Year	YTD	Last YTD	Change By Month	Change YTD
Criminal Investigations Assigned	72	86	258	322	-16%	-20%
Criminal Investigations Closed	38	55	179	282	-31%	-37%
Cleared by Arrests	25	49	121	196	-49%	-38%
Unfounded	4	8	20	30	-50%	-33%
Exceptionally Cleared	4	7	16	40	-43%	-60%
Filed With Prosecutors Office	3	1	13	11	200%	18%
TOTALS	146	206	607	881	-29%	-31%

Crimes Against Persons	This Month	This Month Last Year	YTD	Last YTD	Change By Month	Change YTD
Criminal Investigations Assigned	23	16	62	66	44%	-6%
Criminal Investigations Closed	12	12	51	61	0%	-16%
Cleared by Arrests	11	12	40	42	-8%	-5%
Unfounded	0	1	4	3	-100%	33%
Exceptionally Cleared	0	0	2	13	N/C	-85%
Filed With Prosecutors Office	1	0	6	4	N/C	50%
TOTALS	47	41	165	189	15%	-13%

MONTHLY REPORT APRIL 2012

May 10, 2012

Property Crimes	This Month	This Month Last Year	YTD	Last YTD	Change By Month	Change YTD
Criminal Investigations Assigned	46	65	179	226	-29%	-21%
Criminal Investigations Closed	20	37	109	186	-46%	-41%
Cleared by Arrests	14	37	79	150	-62%	-47%
Unfounded	2	7	14	21	-71%	-33%
Exceptionally Cleared	4	7	13	27	-43%	-52%
Filed With Prosecutors Office	2	1	5	3	100%	67%
TOTALS	88	154	399	613	-43%	-35%

Crimes Against Children	This Month	This Month Last Year	YTD	Last YTD	Change By Month	Change YTD
Criminal Investigations Assigned	1	2	7	12	-50%	-42%
Criminal Investigations Closed	0	0	6	16	N/C	-63%
Cleared by Arrests	0	0	2	4	N/C	-50%
Unfounded	2	0	3	8	N/C	-63%
Exceptionally Cleared	0	0	1	0	N/C	N/C
Filed With Prosecutors Office	0	0	3	4	N/C	-25%
TOTALS	3	2	22	44	50%	-50%
Miscellaneous Investigations Assigned	2	3	8	10	N/C	-20%
Miscellaneous Investigations Cleared	2	3	6	9	N/C	-33%

WARRANTS

The Warrants Division is responsible for serving warrants, criminal summonses, and subpoenas that are issued by the District Court. On city court days, the Warrants Division provides a bailiff for court and a transport officer. In addition, this Division

is responsible for transporting wanted persons arrested in other jurisdictions back to Jonesboro. The STEP program operates within this division and is a grant-funded operation in which officers can get paid overtime to enforce the safety belt law.

Arrests	This Month	This Month Last Year	YTD	Last YTD	Change By Month	Change YTD
Misdemeanor	1199	1034	5417	5449	16%	-1%
Felony	0	1	2	2	-100%	0%
Total Arrests	1199	1035	5419	5451	16%	-1%

Warrants by Activity	This Month	This Month Last Year	YTD	Last YTD	Change By Month	Change YTD
Subpoenas	420	487	1598	1699	-14%	-6%
Commitments	4	1	17	8	300%	113%
Traffic Citations	0	1	11	7	-100%	57%
Complaints	3	1	4	1	200%	300%
Assist	1	0	1	0	N/C	N/C
Alarms	0	0	0	0	N/C	N/C

Hours by Activity	This Month	This Month Last Year	YTD	Last YTD	Change By Month	Change YTD
SI Criminal	141	238	866.5	937	-41%	-8%
Court	131	124	452.33	472.83	6%	-4%
Prisoner Transport	51.5	22.5	132	112.5	129%	17%

MONTHLY REPORT APRIL 2012

May 10, 2012

Hours Worked	This Month	This Month Last Year	YTD	Last YTD	Change By Month	Change YTD
Regular Hours Worked	559	596	4153	2653.5	-6%	57%
Overtime Hours Worked	3	11.5	18	36.5	-74%	-51%
TOTAL Hours Worked	562	607.5	4171	2690	-7%	55%

Mileage	This Month	This Month Last Year	YTD	Last YTD	Change By Month	Change YTD
Total Mileage	2798	2473	10260	10214	13%	0%

STEP	This Month	This Month Last Year	YTD	Last YTD	Change By Month	Change YTD
DWI Arrest	1	0	6	2	N/C	200%
DUI Arrest	0	0	0	0	N/C	N/C
Traffic Citations	151	172	845	577	-12%	46%
Felony Arrests	2	1	4	3	100%	33%
Drug Arrests	0	0	0	1	N/C	-100%
STEP TOTALS	154	173	855	583	-11%	47%
STEP Hours Worked	89.5	115.5	602	295.5	-23%	104%
STEP Miles Driven	504	951	3954.4	2326	-47%	70%

DRUG TASK FORCE

The DTF is responsible for investigating major drug traffickers in the area, including all types of illegal drugs. They

work closely with local, state, and federal agencies to eradicate drugs from the community.

INVESTIGATIONS	This Month	This Month Last Year	YTD	Last YTD	Change By Month	Change YTD
Opened	24	17	102	125	41%	-18%
Closed	26	20	84	117	30%	-28%
TOTAL	50	37	186	242	35%	-23%

With Nexus to Jonesboro	This Month	This Month Last Year	YTD	Last YTD	Change By Month	Change YTD
Opened	25	17	98	125	47%	-22%
Closed				0	N/C	N/C
TOTAL	25	17	98	125	47%	-22%

Outside Jonesboro (No Known Nexus)	This Month	This Month Last Year	YTD	Last YTD	Change By Month	Change YTD
Opened	0	2	3	11	-100%	-73%
Closed	0	0		0	N/C	N/C
TOTAL	0	2	3	11	-100%	-73%

ASSISTANCE RENDERED	This Month	This Month Last Year	YTD	Last YTD	Change By Month	Change YTD
Assist to Outside Agencies	2	0	9	5	N/C	80%
Assist to Jonesboro UPD/CID	14	12	57	67	17%	-15%

MONTHLY REPORT APRIL 2012

May 10, 2012

ARRESTS	This Month	This Month Last Year	YTD	Last YTD	Change By Month	Change YTD
Miscellaneous	8	3	38	38	167%	0%
Felony	32	31	115	198	3%	-42%
Marijuana	8	4	17	36	100%	-53%
Cocaine	1	3	7	7	-67%	0%
Crack Cocaine	9	2	15	11	350%	36%
Methamphetamine/ICE	9	3	37	48	200%	-23%
LSD	0	0	0	0	N/C	N/C
Ecstasy (MDMA or Other Designer Drug)	0	0	0	0	N/C	N/C
Prescription	3	1	8	10	200%	-20%
Opiates (Heroine, Opium)	0	0	0	1	N/C	-100%
Labs	0	2	2	8	-100%	-75%
All Other Drug Offenses	6	0	10	0	N/C	N/C

ASSET FORFEITURE	This Month	This Month Last Year	YTD	Last YTD	Change By Month	Change YTD
Vehicles Seized (No.)	0	1	0	0	-100%	N/C
Value of Assets Seized(Includes Value of vehicles)	\$0	\$17,200	\$2,400	\$33,105	-100%	-93%
Asset Value Awarded to Jonesboro PD (State)		\$0	\$0	\$0	N/C	N/C
Asset Value Awarded to Jonesboro PD (Federal)		\$0	\$0	\$0	N/C	N/C
Asset Value Awarded to Jonesboro PD (Total)		\$0	\$0	\$0	N/C	N/C

ARRESTS DEMOGRAPHICS	This Month	This Month Last Year	YTD	Last YTD	Change By Month	Change YTD
White	9	17	41	83	-47%	-51%
African American	12	9	36	44	33%	-18%
Latino	1	1	11	2	0%	450%
Asian	0	0	0	0	N/C	N/C
Other/Bi-Racial	0	0	0	0	N/C	N/C
Male	18	21	66	101	-14%	-35%
Female	4	3	22	24	33%	-8%
White Male	5	12	25	60	-58%	-58%
White Female	4	2	14	20	100%	-30%
African American Male	10	8	29	40	25%	-28%
African American Female	0	1	6	3	-100%	100%
Latino Male	1	1	9	2	0%	350%
Latino Female	0	0	0	0	N/C	N/C
Asian Male	0	0	0	0	N/C	N/C
Asian Female	0	0	0	0	N/C	N/C
Other/Bi-Racial Male	0	0	0	0	N/C	N/C
Other/Bi-Racial Female	0	0	0	0	N/C	N/C

TRAFFIC

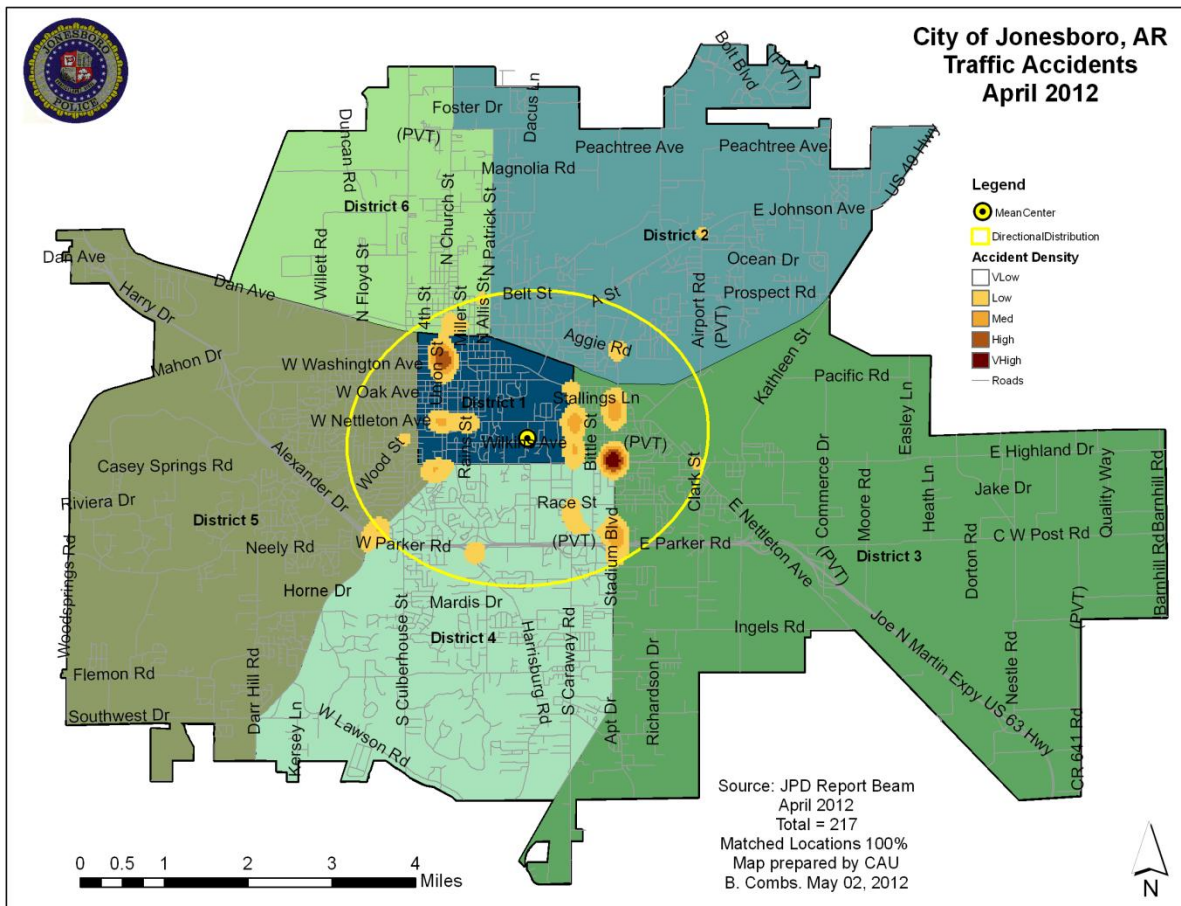
Comprised of three motor units and three Chargers, the Traffic Enforcement Unit responds to traffic accidents and provides increased enforcement in particularly challenging areas. This unit also provides

extra coverage for specific congestion problems and special events in the community. Last, they work details targeting specific issues, such as DWI enforcement and traffic safety checkpoints.

MONTHLY REPORT APRIL 2012

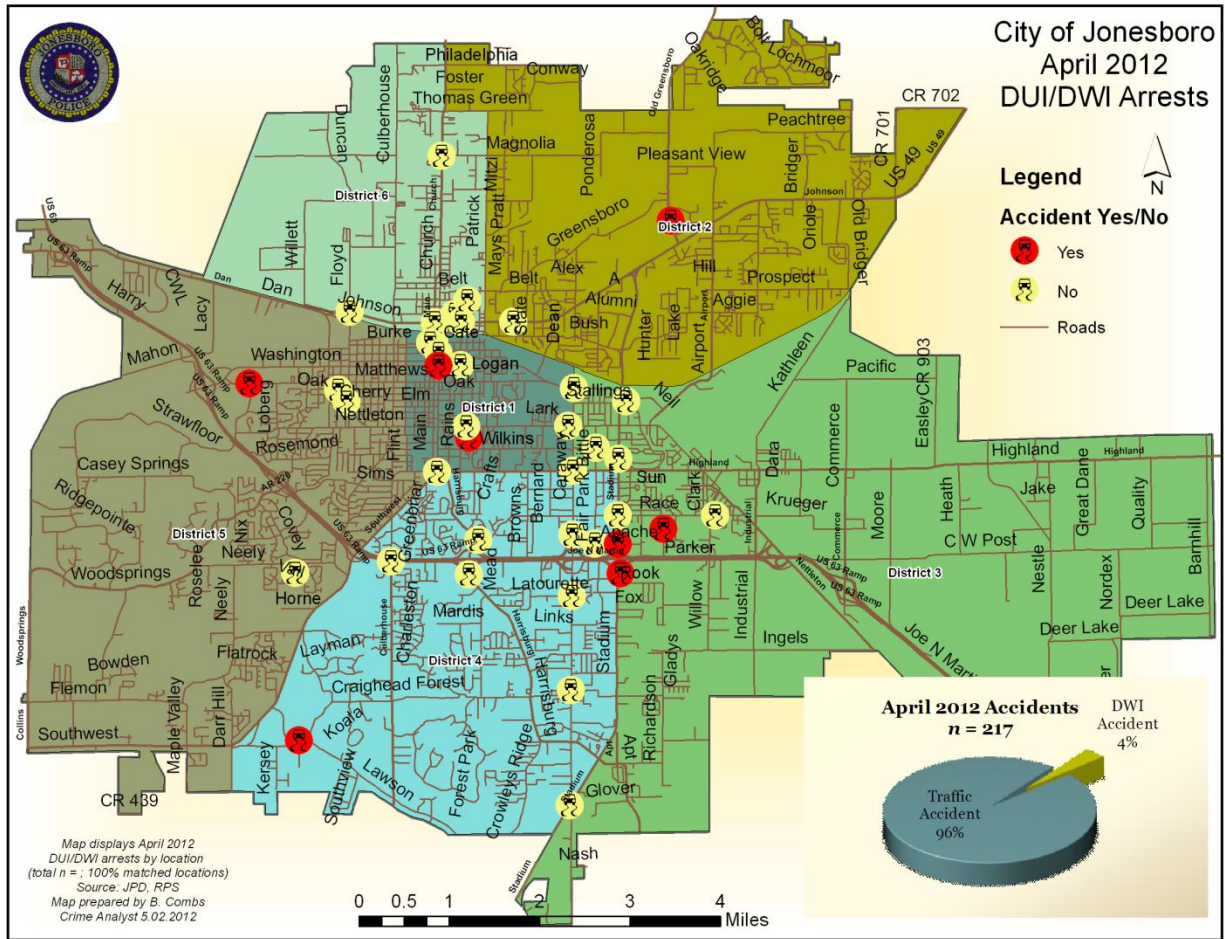
May 10, 2012

Incidents	This Month	This Month Last Year	YTD	Last YTD	Change By Month	Change YTD
Street Accidents	134	133	556	525	1%	6%
Private Property Accidents	41	42	155	158	-2%	-2%
Traffic Citations	125	200	538	677	-38%	-21%
DWI	6	5	12	17	20%	-29%
Mis. Arrests	32	21	32	60	52%	-47%
Felony Arrests	1	4	1	9	-75%	-89%
Drug Arrests	0	0	0	0	N/C	N/C
Public Intoxication Arrests	0	0	0	1	N/C	-100%
Calls For Service	268	251	965	953	7%	1%
Alarms	0	1	0	8	-100%	-100%
Parking Citations	0	0	0	0	N/C	N/C
Written Warnings	110	35	423	430	214%	-2%
TOTALS	717	692	2682	2838	4%	-5%
Value of Asstes Seized	\$0	\$0	\$0	\$0	N/C	N/C
Patrol Miles	5,620	6,119	23,218	19,716	-8%	18%
Hours Worked	806.5	838.5	3411	3137	-4%	9%



MONTHLY REPORT APRIL 2012

May 10, 2012



PARKING ENFORCEMENT

The Parking Enforcement Division is responsible for enforcing parking laws in the downtown area. This service provides a

safe and convenient parking situation for the public.

CITATIONS ISSUED	This Month	This Month Last Year	YTD	Last YTD	Change By Month	Change YTD
Citations	42	31	97	134	35%	-28%
Verbal Warnings	21		46	0	N/C	N/C

MINUTES BY ACTIVITY	This Month	This Month Last Year	YTD	Last YTD	Change By Month	Change YTD
Office	460	460	0	1,635	0%	-100%
Admin(Non-Office)	0	715	2,515	2,520	-100%	0%
Community	0	0	0	0	N/C	N/C
Training	0	0	600	0	N/C	N/C
Patrol	6,985	4,975	15,965	18,585	40%	-14%

MONTHLY REPORT APRIL 2012

May 10, 2012

ANIMAL CONTROL

The Animal Control Division is responsible for educating the public on safe and humane issues regarding animal treatment, enforcing all animal laws and ordinances, assisting the public in resolving animal

issues, and protecting the safety and welfare of the citizens and animals in this community.

Incidents	This Month 04/12	This Month Last Year	YTD 2012	Last YTD 2011	Change By Month	Change YTD
Barking Complaints	17	15	38	58	13%	-34%
Bite Reports	11	26	33	55	-58%	-40%
Door Hangers	46	50	214	146	-8%	47%
Welfare Checks	71	119	462	396	-40%	17%
Advised of Rights	915	687	3,350	2,293	33%	46%
Incident Reports	8	10	25	15	-20%	67%
Gone on Arrival	59	29	194	126	103%	54%
Complaints	853	610	3,166	2,484	40%	27%
Desk Complaints	1,145	1,694	5,370	6,170	-32%	-13%
Captured Dogs	155	124	609	530	25%	15%
Captured Cats	1	11	19	24	-91%	-21%
Captured Wildlife	21	23	73	58	-9%	26%
Chemical Captures	2	1	9	15	100%	-40%
Traps	53	10	85	41	430%	107%
Deceased Animals	71	66	354	270	8%	31%
Assist J.P.D.	9	14	19	39	-36%	-51%
Assist C.S.O.	0	1	0	6	-100%	-100%
Public Relations	507	847	1,803	2,970	-40%	-39%
CITATIONS ISSUED	40	137	238	412	-71%	-42%
WARNINGS ISSUED	84	110	178	261	-24%	-32%

Incidents	This Month 04/12	This Month Last Year	YTD 2012	Last YTD 2011	Change By Month	Change YTD
Physical Arrests	1	2	4	8	-50%	-50%
City Warrants Served	2	44	19	65	-95%	-71%
County Warrants Served	6	0	6	0	N/C	N/C
Felony Bench Warrants	0	0	0	0	N/C	N/C
Euthanized	46	67	252	203	-31%	24%
Deceased Animals Landfill lbs.	2,550	3,400	12,550	12,680	-25%	-1%
Wildlife Euthanized	21	23	73	58	-9%	26%
Sent to Rescue Centers	3	7	37	19	-57%	95%
Adoptions	46	39	181	163	18%	11%
Miles Driven	7,364	5,816	27,466	26,865	27%	2%

* Above numbers are based on work performed by 4 officers

FLEET MAINTNANCE

The Fleet Maintenance is responsible for all of the police vehicle maintenance upkeep, cleanliness, and purchasing. In addition,

this Division handles most of the purchasing of equipment, supplies, and uniforms for all of the Police Department.

MONTHLY REPORT APRIL 2012

May 10, 2012

Repair Costs by Model Year	This Month	This Month Last Year	YTD	Last YTD	Change By Month	Change YTD
95-99	\$0.00	\$0.00	\$0.00	\$0.00	N/C	N/C
2000	\$0.00	\$9.00	\$0.00	\$159.44	-100%	-100%
2001	\$0.00	\$0.00	\$300.46	\$11.61	N/C	2488%
2002	\$0.00	\$0.00	\$0.00	\$0.00	N/C	N/C
2003	\$0.00	\$0.00	\$0.00	\$0.00	N/C	N/C
2004	\$259.75	\$138.13	\$1,402.82	\$920.05	88%	52%
2005	\$41.61	\$590.43	\$598.07	\$3,887.03	-93%	-85%
2006	\$4,280.74	\$1,113.05	\$10,982.79	\$6,796.46	285%	62%
2007	\$2,406.85	\$1,526.91	\$6,039.05	\$3,789.03	58%	59%
2008	\$1,213.25	\$25.96	\$1,911.41	\$1,212.91	4574%	58%
2009	\$0.00	\$0.00	\$440.38	\$96.03	N/C	N/C
2010	\$0.00	\$37.10	\$489.28	\$37.10	N/C	N/C
2011	\$131.54	n/a	\$601.23	n/a	N/C	N/C
2012	\$0.00	n/a	\$0.00	n/a		
Totals	\$8,333.74	\$3,440.58	\$22,765.49	\$16,909.66	142%	35%

Routine Preventative Maintenance by Model Year	This Month	This Month Last Year	YTD	Last YTD	Change By Month	Change YTD
95-99	\$72.00	\$0.00	\$72.00	\$0.00	N/C	N/C
2000	\$0.00	\$20.00	\$20.00	\$40.00	-100%	-50%
2001	\$0.00	\$0.00	\$0.00	\$28.00	N/C	-100%
2002	\$0.00	\$0.00	\$100.46	\$10.30	N/C	875%
2003	\$0.00	\$0.00	\$172.00	\$29.00	N/C	493%
2004	\$9.00	\$60.00	\$158.00	\$1,123.51	-85%	-86%
2005	\$13.50	\$100.00	\$405.35	\$1,326.94	-87%	-69%
2006	\$1,486.52	\$370.29	\$7,316.13	\$5,751.78	301%	27%
2007	\$428.50	\$1,045.79	\$4,722.00	\$3,471.26	-59%	36%
2008	\$209.95	\$209.30	\$1,682.49	\$702.37	0%	140%
2009	\$313.03	\$100.00	\$2,882.40	\$705.77	N/C	N/C
2010	\$366.63	\$0.00	\$1,009.78	\$831.37	N/C	N/C
2011	\$160.00	n/a	\$556.50	n/a	N/C	N/C
2012	\$352.81	n/a	\$352.81	n/a		
Totals	\$3,059.13	\$1,905.38	\$19,449.92	\$14,020.30	61%	39%

RECORDS

The Records Division is responsible for providing administrative and clerical support to the department. Major responsibilities include entering the accident and incident reports and tickets into the records database management

system, assisting the general public for report requests, performing criminal backgrounds, serving as a switchboard at times, performing validations, and setting up and managing the payment plans out of court.

MONTHLY REPORT APRIL 2012

May 10, 2012

RECORDS	This Month	This Month Last Year	YTD	Last YTD	Change By Month	Change YTD
Incident/Arrest Reports Processed	1328	1327	5118	5137	0%	0%
Accident Reports Processed	217	230	827	815	-6%	1%
Citations Processed	4072	4038	17140	17634	1%	-3%
Warnings Processed	882	438	3281	2651	101%	24%
Backgrounds	8	15	56	97	-47%	-42%
Fingerprints	127	81	515	430	57%	20%
Photos	0	1	0	11	-100%	-100%
Accident Requests	110	124	511	413	-11%	24%
Accident Requests Online	??	182	#VALUE!	655	#VALUE!	#VALUE!
TOTALS	6,744	6,436	#VALUE!	27,843	5%	#VALUE!

PROFESSIONAL STANDARDS

The Office of Professional Standards, a unit within Administration, is charged with the compilation and updating of an extensive set of policies and procedures and providing a general operations guideline and code of conduct for officers to follow.

In the event that a member of the public does experience a negative interaction with an officer, mechanisms are in place for them to lodge a complaint. All complaints are reviewed and investigations completed in a timely manner. (See next page for details)

Professional Standards	This Month	This Month Last Year	YTD	Last YTD	Change By Month	Change YTD
Opened (TOTAL)	14	2	29	17	600%	71%
Closed	14	2	29	15	600%	93%
Inquiries	12	1	27	15	1100%	80%
Formal Investigations	2	2	2	3	0%	-33%
Sustained	10	2	23	12	400%	92%
Not-Sustained	0	0	0	0	N/C	N/C
Exonerated	0	0	1	0	N/C	N/C
Unfounded	4	0	5	3	N/C	67%

END OF REPORT